

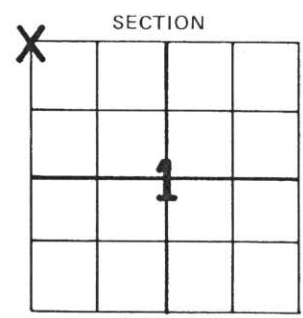
# MARATHON COUNTY U.S. PUBLIC LAND SURVEY MONUMENT LOCATION RECORD

SECTION 1  
 TOWNSHIP 30  
 RANGE 8

NO. 11

LANDMARK       BENCHMARK  
 FOUND  SET   
 RE-SET  RE-TIED   
 CORNER IDENTITY: FOUND PK NAIL  
 STATE PLANE COORDINATE: N: \_\_\_\_\_  
 ZONE: \_\_\_\_\_ E: \_\_\_\_\_  
 ELEVATION - (FEET): \_\_\_\_\_ DATUM: \_\_\_\_\_  
 THETA ANGLE: \_\_\_\_\_ WEATHER: Windy  
 DATE OF SURVEY: Jan 3, 1995 TEMPERATURE: 0 °F  
 SURVEY PARTY: L.H. Mosher, Don Buza

TEXAS  
 CITY, VILLAGE, TOWN \_\_\_\_\_



LOCATION (Indicated By X)



## BASIS FOR MONUMENT LOCATION:

(DESCRIBE METHOD OF SURVEY AND CORNER AUTHENTICATION)

Recovered intact corner of record, a PK Nail. Position verified as correct from existing ties and measurement to North 1/4 corner to East and West 1/4 corner to South; as well as to Southwest corner Section 1 and the East 1/4 corner of Section 11.



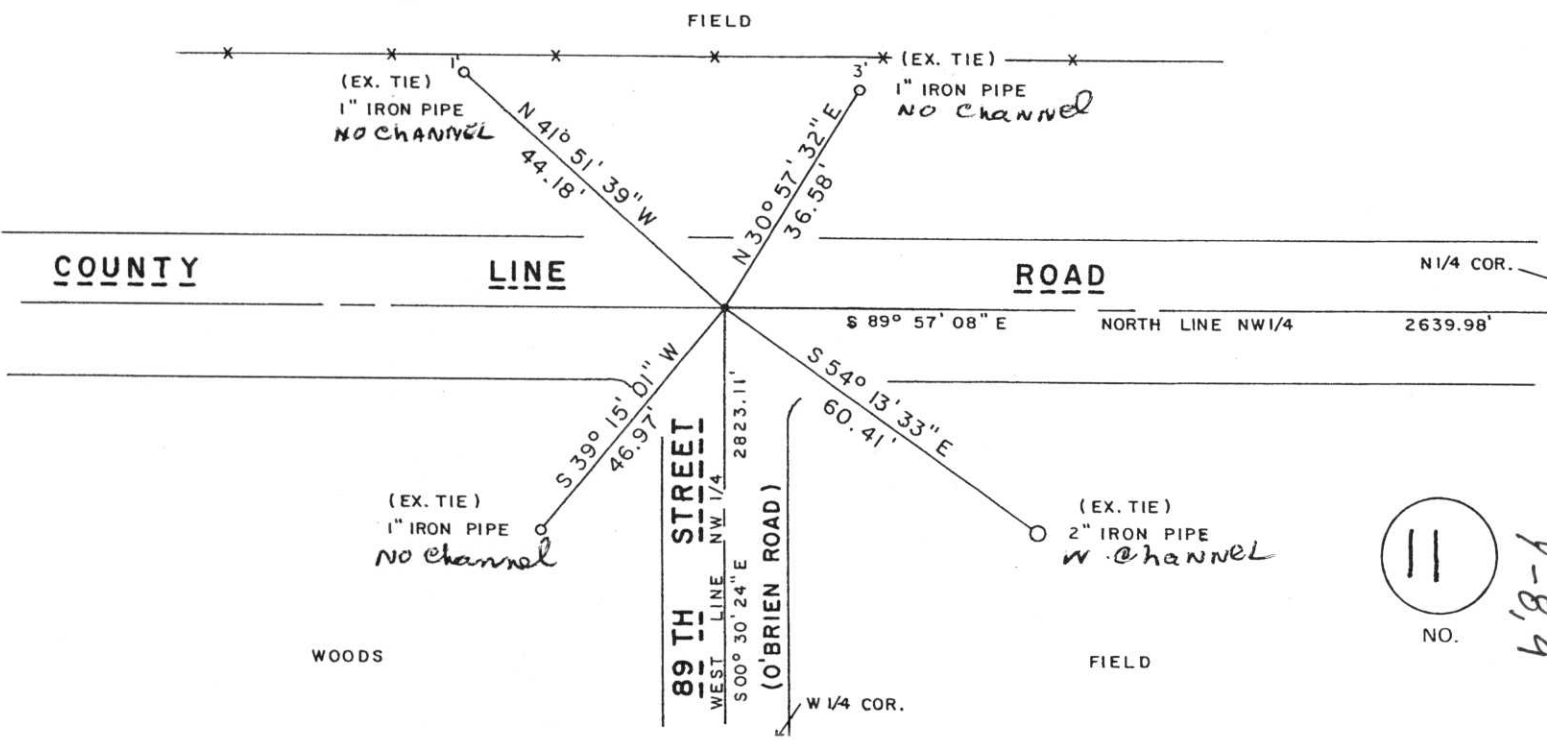
CERTIFIED CORRECT:  
*Laverne H. Mosher*

FIELD BOOK NO. \_\_\_\_\_ PAGE NO. \_\_\_\_\_  
 COMPANY LHM SURVEYING

Registered Land Surveyor  
 DATE: January 11, 1995  
REVISITED 3-31-99

## TIE SKETCH:

SHOW MINIMUM OF FOUR (4) HORIZONTAL TIE DISTANCES TO FIXED WITNESS MONUMENTS. DESCRIBE ALL MONUMENTS FOUND OR SET. CORRECT ALL DISTANCES SHOWN TO STANDARD TEMPERATURE OF 68° F.



NO. 11

68-1