

CERTIFIED LAND CORNER RESTORATION

Index No. Y-3

State of Wisconsin }  
County of LINCOLN } ss.

History of original corner establishment:

Chester J. Nowaczyk, do hereby certify that on the 20<sup>th</sup> day of June, 1980, I found evidence of the 5/4 corner of Sec 31 Township 31, North, Range 8, Fourth, Principal Meridian, as described hereon; and that from this evidence I established a new monument and accessories as described hereon to perpetuate the original location of this corner.

Description of corner evidence found: 6"x6" GRANITE STONE

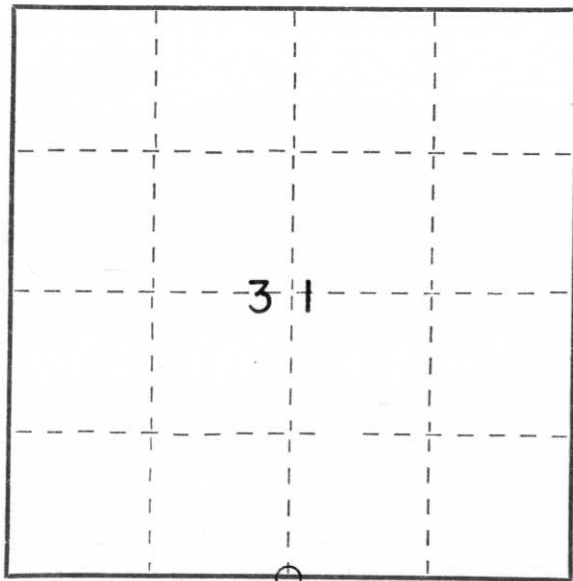
Ties gone  
per Aero-metric  
10/98

Resident witnesses:

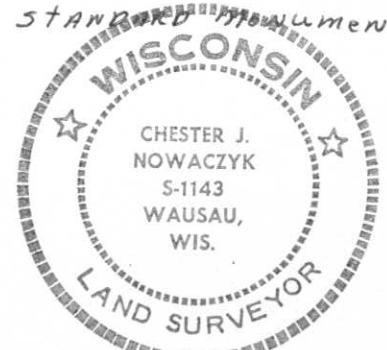
.....  
.....  
.....

Description of monument and accessories I established to perpetuate the original location of this corner.

FOUND BASE OF 6"x6" STONE, REPLACED WITH BERNSTIEN STANDARD Monument



○ = Corner monument restored.



Dated at WAUSAU, Wis., this 21<sup>ST</sup> day of July, 1980.

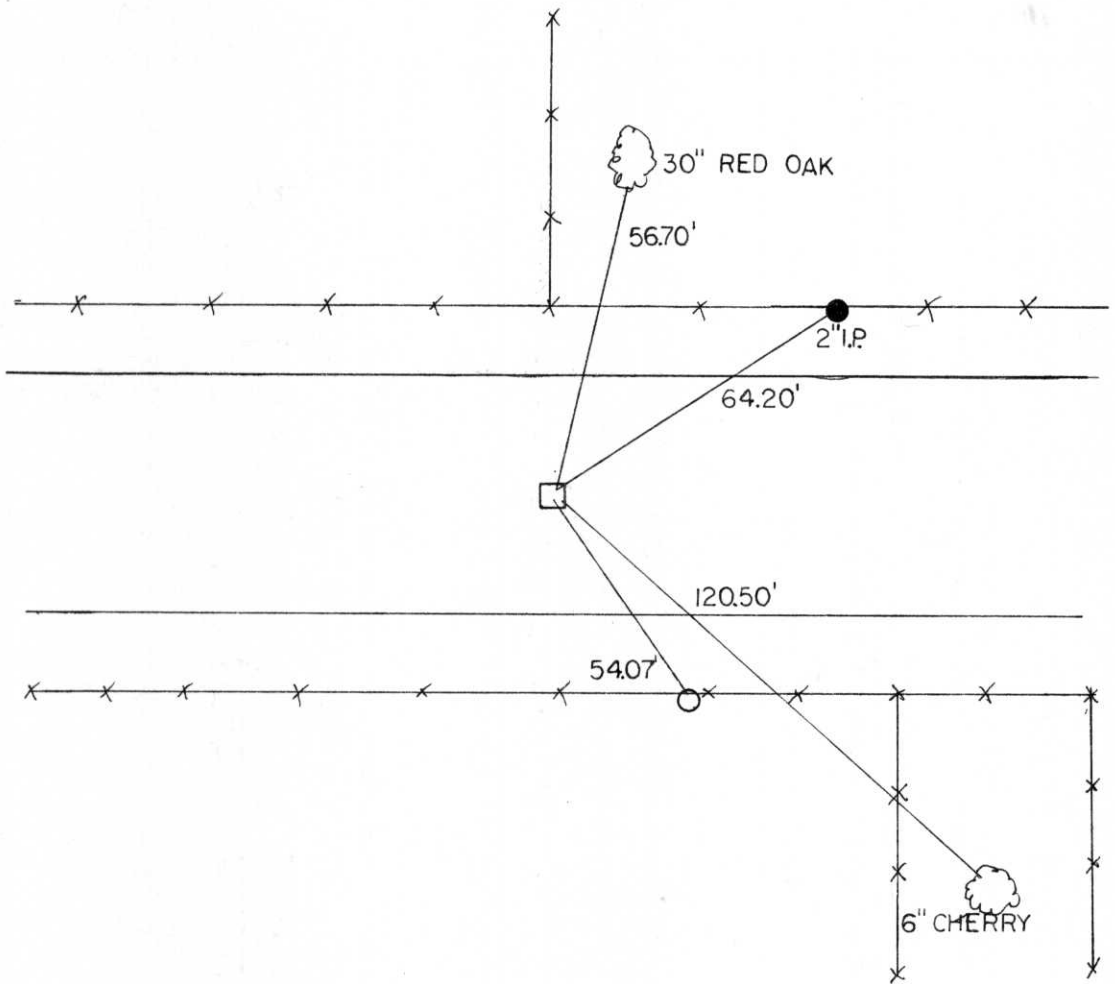
Signature Chester J. Nowaczyk Title SURVEYOR Registration No. 51143  
(County Surveyor, Registered Land Surveyor, or other duly authorized official)

Office of Register of Deeds, County of \_\_\_\_\_, I hereby certify that the within instrument was filed in this office for record on the \_\_\_\_\_ day of \_\_\_\_\_, 19\_\_\_\_ at \_\_\_\_\_ o'clock \_\_\_\_\_ M.

.....  
(Register of Deeds)

By \_\_\_\_\_ Deputy

S 1/4 COR. SEC. 31-T3IN-8E



RECEIVED AT LINCOLN COUNTY  
COURTHOUSE THIS 21<sup>st</sup> DAY  
OF July 19 80.  
*Pat O'Neale*  
TAX DESCRIPTION OFFICE