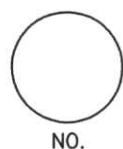


# LINCOLN COUNTY U.S. PUBLIC LAND SURVEY MONUMENT LOCATION RECORD

CORNER NUMBER 353185  
 SECTION 35  
 TOWNSHIP 31 NORTH  
 RANGE 8 EAST  
 PINE RIVER  
 CITY, VILLAGE, TOWN



LANDMARK  BENCHMARK \_\_\_\_\_  
 CORNER IDENTITY: EAST 1/4 CORNER  
 FOUND  SET   
 RESET   
 RE-TIED

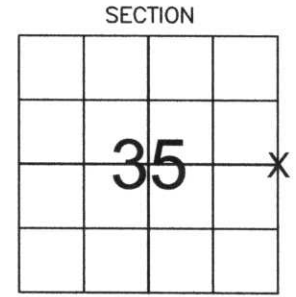
LINCOLN COUNTY COORDINATE: N: 103021.62  
 E: 455086.52

ELEVATION-(FEET): \_\_\_\_\_ DATUM: \_\_\_\_\_

WEATHER: MOSTLY CLOUDY

DATE OF SURVEY: 12-03-05 TEMPERATURE: 15 °F

SURVEY PARTY: NATHAN WINCENTSEN, KEITH WALKOWSKI



LOCATION (Indicated By X)



**BASIS FOR MONUMENT LOCATION:**  
 (DESCRIBE METHOD OF SURVEY AND CORNER AUTHENTICATION)

SEARCHED FOR CORNER ALONG A NORTH-SOUTH FENCE LINE.  
 FOUND GRANITE STONE LAYING DOWN IN MUD. RESET STONE IN HOLE FOUND AT BASE OF STONE. ACCEPTED STONE AS CORNER LOCATION AND PERPETUATED AS SHOWN BELOW.

CERTIFIED CORRECT:  
Keith J. Walkowski  
KEITH J. WALKOWSKI  
 Registered Land Surveyor  
 DATE: Jan. 3RD, 2006

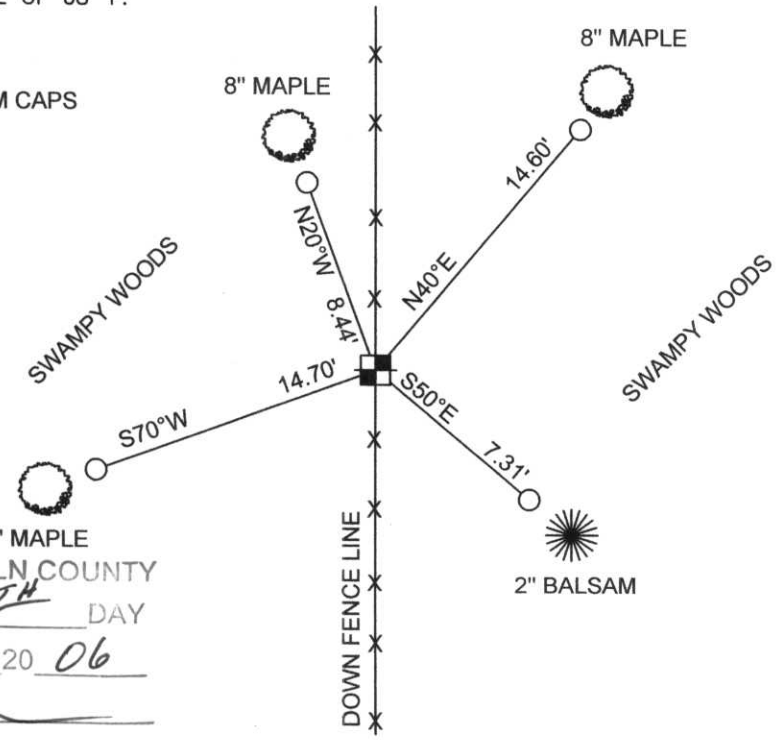
FIELD BOOK NO. PINE RIVER PAGE NO. 38  
 COMPANY RIVERSIDE LAND SURVEYING LLC

**TIE SKETCH:** SHOW MINIMUM OF FOUR (4) HORIZONTAL TIE DISTANCES TO FIXED WITNESS MONUMENTS. DESCRIBE ALL MONUMENTS FOUND OR SET. CORRECT ALL DISTANCES SHOWN TO STANDARD TEMPERATURE OF 68° F.

- FOUND GRANITE STONE
- SET 3/4" REBAR WITH ALUMINUM CAPS
- VINYL SURVEY MARKER POST

**NOTE**

- ALL BEARINGS ARE FROM A HAND HELD MAGNETIC COMPASS
- THIS DRAWING IS NOT TO SCALE



RECEIVED BY LINCOLN COUNTY SURVEYOR THIS 6<sup>TH</sup> DAY OF January 20 06  
Tom Walker  
 COUNTY SURVEYOR

W-21



353/85

