

U.S. PUBLIC LAND SURVEY MONUMENT RECORD

Note: This form is intended and designed to fulfill all requirements of Wisconsin Administrative Code, Chapter A-E 7.08, U.S. Public Land Survey Monument Record (3) (a) (b) (c) (d) (e) (f) (g) (h) (i). An additional sheet may be added if necessary to conform with said requirements.

(a) Corner location: Township 31 North
 Range 8 East
 Town/~~City~~/~~Village~~ Pine River
 County Lincoln



(b) (f) (g) (h) Description of monument found at this corner and if it was accepted, state all evidence (material, testimonial, occupational, plats, records, other monuments) used as a basis for accepting. If not accepted or if nothing was found, state evidence used as basis for establishing location. If reestablished through lost corner proportionate methods, indicate all monuments, distances and directions used to establish.

1852 - A.G. Ellis & F.S. Ellis set 1/4 Section corner post.
 10" Linwood, N 25° W, 26 links; 10" Birch, N 78° E, 31 links

01/03/2006 - K. Walkowski PLS-2717 dug for corner with county grader. he found a Granite Stone, 2' below the road surface. Accepted corner and set a 1" Iron Pipe along the north side on the Stone. He set four (4) new reference ties to perpetuate the corner location.

06/04/2012 - A. Dallman PLS-2405 found three (3) existing reference ties in tact. Set one (1) additional tie based on existing reference tie corner location as shown in the sketch below.

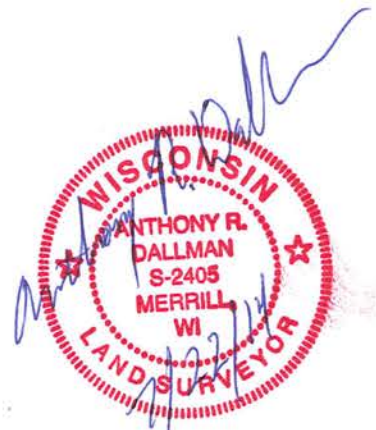
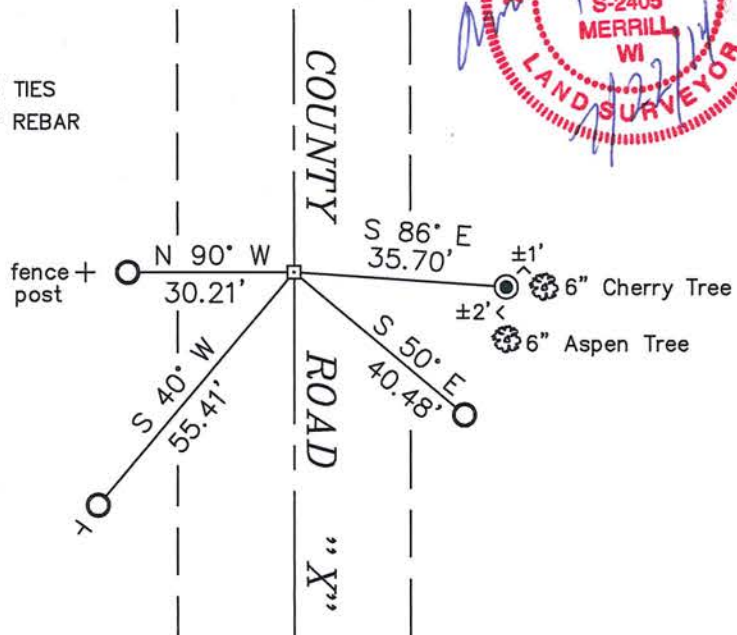
(c) (d) (e) Plan view of corner with ties to at least 4 witness monuments. If in disagreement with previously established corner, show the distance between the two corners and also indicate the ties to the disputed corner.

LEGEND

- - 6" X 6" GRANITE MONUMENT, FROM TIES
- - SET ALUMINUM CAPPED 7/8" X 30" REBAR
- - FOUND ALUMINUM CAPPED REBAR
- > - WHITE VINYL MARKER POST



NOT TO SCALE



(i) I, Anthony R. Dallman

(type or print name) certify that the corner location on this record was determined by me under my direction and control and that this U.S. Public Land Survey Monument Record is correct and complete to the best of my knowledge and belief.

Anthony R. Dallman
 Signature

7/22/14
 Date

Index No. W-17

LINCOLN COUNTY U.S. PUBLIC LAND SURVEY MONUMENT LOCATION RECORD

CORNER NUMBER 343185

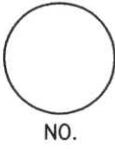
SECTION 34

TOWNSHIP 31 NORTH

RANGE 8 EAST

PINE RIVER

CITY, VILLAGE, TOWN



LANDMARK BENCHMARK _____ FOUND SET
 CORNER IDENTITY: EAST 1/4 CORNER RESET
 RE-TIED

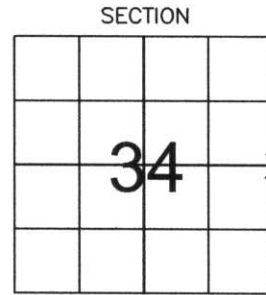
LINCOLN COUNTY COORDINATE: N: 103010.02
 E: 449774.01

ELEVATION-(FEET): _____ DATUM: _____

WEATHER: PARTLY CLOUDY

DATE OF SURVEY: 10-11-05 TEMPERATURE: 60 °F

SURVEY PARTY: NATHAN WINCENTSEN, KEITH WALKOWSKI



LOCATION (Indicated By X)



BASIS FOR MONUMENT LOCATION:

(DESCRIBE METHOD OF SURVEY AND CORNER AUTHENTICATION)

DUG FOR EAST 1/4 CORNER WITH COUNTY GRADALL, FOUND A GRANITE STONE TWO FEET BELOW ROAD SURFACE. ACCEPTED STONE AS CORNER LOCATION AND SET A 1" IRON PIPE ALONG THE NORTH SIDE OF STONE. PERPETUATED CORNER AS SHOWN BELOW.

CERTIFIED CORRECT:

Keith J. Walkowski
KEITH J. WALKOWSKI
 Registered Land Surveyor
 DATE: Jan. 3RD, 2006

FIELD BOOK NO. PINE RIVER PAGE NO. 7

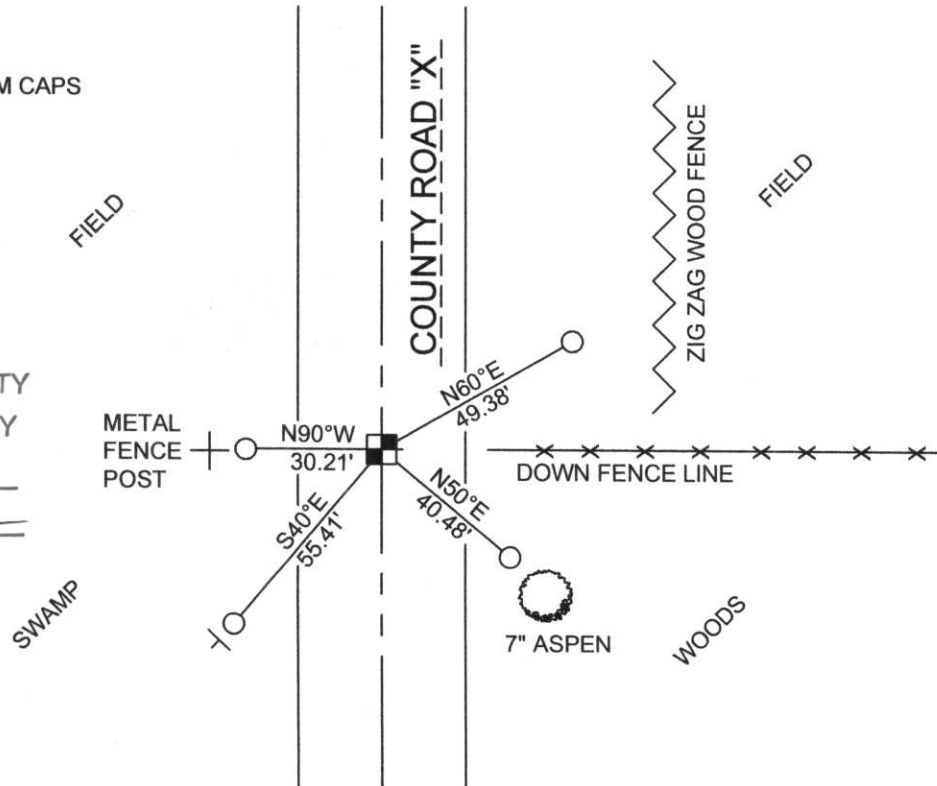
COMPANY RIVERSIDE LAND SURVEYING LLC

TIE SKETCH: SHOW MINIMUM OF FOUR (4) HORIZONTAL TIE DISTANCES TO FIXED WITNESS MONUMENTS. DESCRIBE ALL MONUMENTS FOUND OR SET. CORRECT ALL DISTANCES SHOWN TO STANDARD TEMPERATURE OF 68° F.

- FOUND GRANITE STONE
- SET 3/4" REBAR WITH ALUMINUM CAPS
- VINYL SURVEY MARKER POST

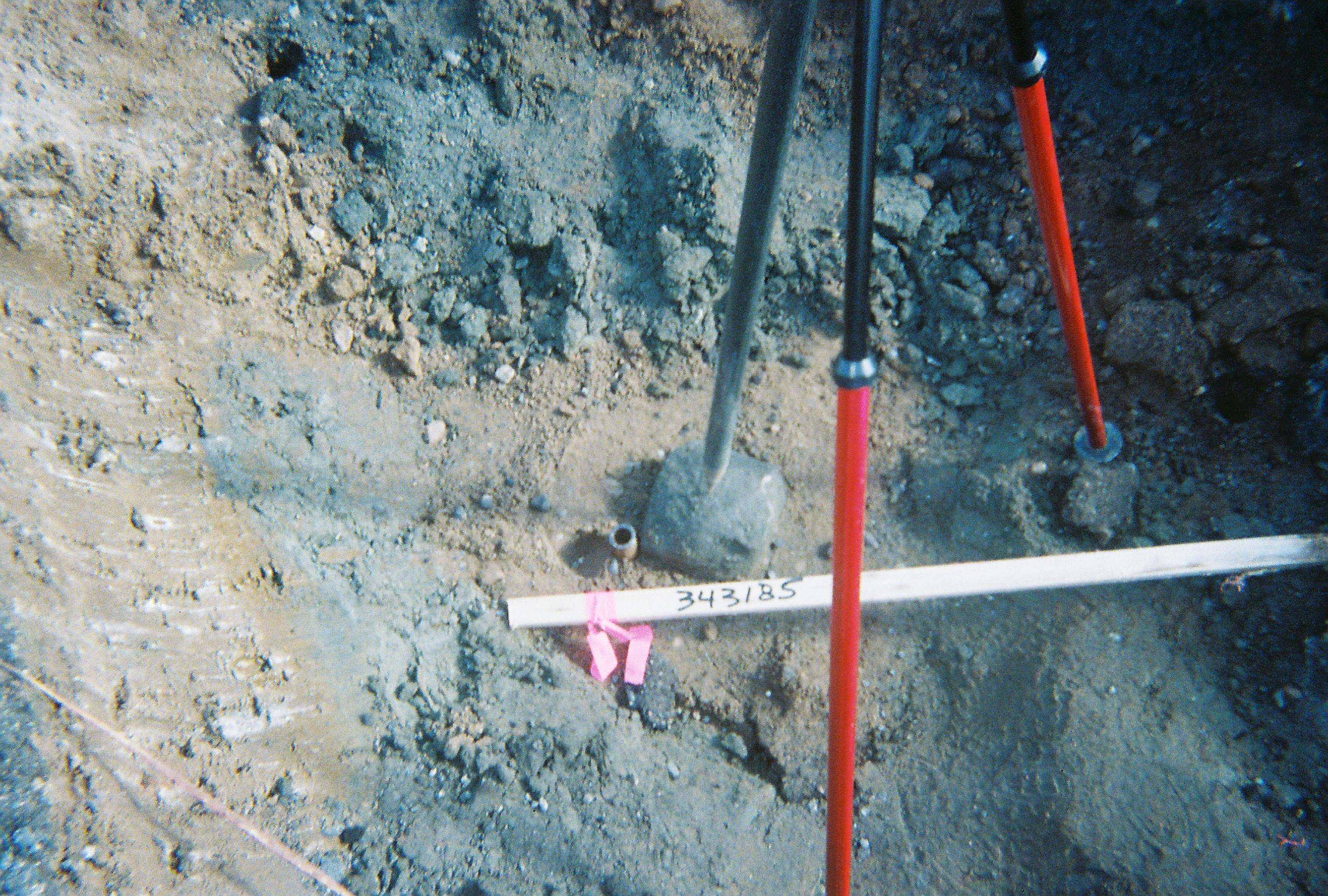
NOTE

- ALL BEARINGS ARE FROM A HAND HELD MAGNETIC COMPASS
- THIS DRAWING IS NOT TO SCALE



RECEIVED BY LINCOLN COUNTY SURVEYOR THIS 6TH DAY OF January 20 06
Tony Dallen
 COUNTY SURVEYOR

11-17



343185