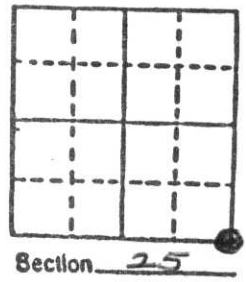


U.S. PUBLIC LAND SURVEY MONUMENT RECORD

Note: This form is intended and designed to fulfill all requirements of Wisconsin Administrative Code, Chapter A-E 5.02, U.S. Public Land Survey Monument Record (3) (a) (b) (c) (d) (e) (f) (g) (h) (i). An additional sheet may be added if necessary to conform with said requirements.

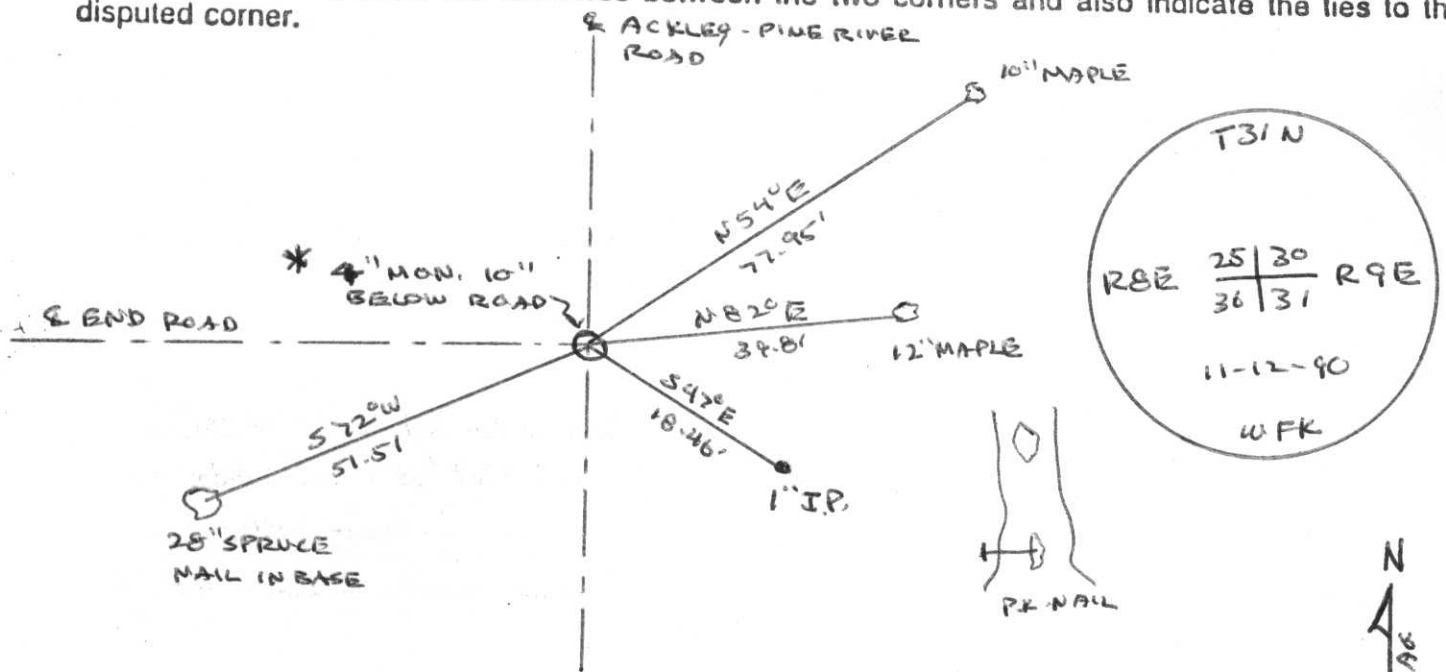
(a) Corner location: Township 31 North
 Range 8 East
 Town EAST PART PINE RIVER
 County LINCOLN



b) (f) (g) (h) Description of monument found at this corner and if it was accepted, state all evidence (material, testimonial, occupational, plats, records, other monuments) used as a basis for accepting. If not accepted or if nothing was found, state evidence used as basis for establishing location. If reestablished through lost corner proportionate methods, indicate all monuments, distances and directions used to establish.

CORNER ORIGINALLY ESTABLISHED BY J.M. MARSH IN
 JUNE - JULY 1851
 LOCATED 6x6 MARBLE STONE ADJACENT TO BURIED TELEPHONE
 CABLE
 * SET A LINCOLN CO. MONUMENT IN PLACE OF STONE. LAID
 BROKEN STONE SECTION ON SIDE NEXT TO NEW CORNER MON.
 PLACED RE-STEEL ROD NEXT TO MONUMENT. TOP OF MONUMENT
 10" BELOW SURFACE OF ROAD.
 MARKED WITNESS MONUMENTS

c) (d) (e) Plan view of corner with ties to at least 4 witness monuments. If in disagreement with previously established corner, show the distances between the two corners and also indicate the ties to the disputed corner.



(i) I, WILLIAM F. KELLY
 (type or print name) certify that the corner location on this record was determined by me or under my direction and control and that this U.S. Public Land Survey Monument Record is correct and complete to the best of my knowledge and belief.

William F. Kelly 11-14-90
 Signature Date



N
 1/4
 Index No. 25
 U-25