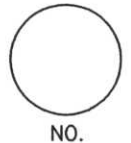


LINCOLN COUNTY U.S. PUBLIC LAND SURVEY MONUMENT LOCATION RECORD

CORNER NUMBER 353182
 SECTION 35
 TOWNSHIP 31 NORTH
 RANGE 8 EAST

PINE RIVER
 CITY, VILLAGE, TOWN



LANDMARK BENCHMARK _____
 FOUND SET
 CORNER IDENTITY: NORTH 1/4 CORNER RESET
 RE-TIED

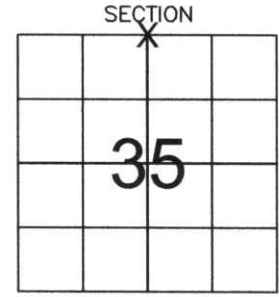
LINCOLN COUNTY COORDINATE: N: 105690.37
 E: 452421.15

ELEVATION-(FEET): _____ DATUM: _____

WEATHER: MOSTLY CLOUDY

DATE OF SURVEY: 12-03-05 TEMPERATURE: 12 °F

SURVEY PARTY: NATHAN WINCENTSEN, KEITH WALKOWSKI



LOCATION (Indicated By X)



BASIS FOR MONUMENT LOCATION: (DESCRIBE METHOD OF SURVEY AND CORNER AUTHENTICATION)

SEARCHED FOR NORTH 1/4 CORNER ALONG FENCE LINE. FOUND GRANITE STONE LAYING DOWN IN MUD. RESET STONE IN HOLE FOUND AT BASE OF STONE. ACCEPTED STONE AS CORNER LOCATION AND PERPETUATED AS SHOWN BELOW.

CERTIFIED CORRECT:
Keith J. Walkowski
KEITH J. WALKOWSKI
 Registered Land Surveyor
 DATE: Jan. 3RD, 2006

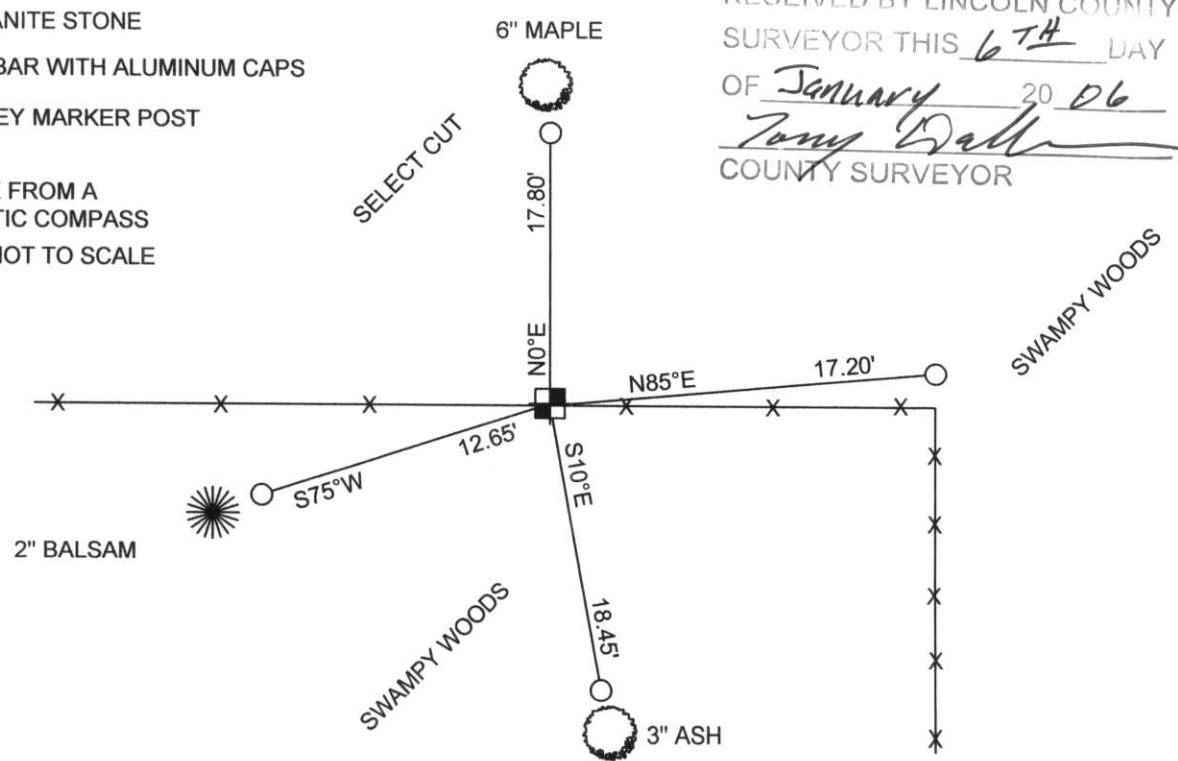
FIELD BOOK NO. PINE RIVER PAGE NO. 37
 COMPANY RIVERSIDE LAND SURVEYING LLC

TIE SKETCH: SHOW MINIMUM OF FOUR (4) HORIZONTAL TIE DISTANCES TO FIXED WITNESS MONUMENTS. DESCRIBE ALL MONUMENTS FOUND OR SET. CORRECT ALL DISTANCES SHOWN TO STANDARD TEMPERATURE OF 68° F.

- FOUND GRANITE STONE
- SET 3/4" REBAR WITH ALUMINUM CAPS
- VINYL SURVEY MARKER POST

NOTE

- ALL BEARINGS ARE FROM A HAND HELD MAGNETIC COMPASS
- THIS DRAWING IS NOT TO SCALE



RECEIVED BY LINCOLN COUNTY SURVEYOR THIS 6TH DAY OF JANUARY 20 06
Tony Dall
 COUNTY SURVEYOR

61-11