

LINCOLN COUNTY U.S. PUBLIC LAND SURVEY MONUMENT LOCATION RECORD

CORNER NUMBER 333183

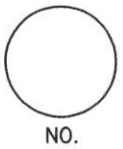
SECTION 33

TOWNSHIP 31 NORTH

RANGE 8 EAST

PINE RIVER

CITY, VILLAGE, TOWN



LANDMARK BENCHMARK _____
 CORNER IDENTITY: NORTHEAST CORNER

FOUND SET
 RESET
 RE-TIED

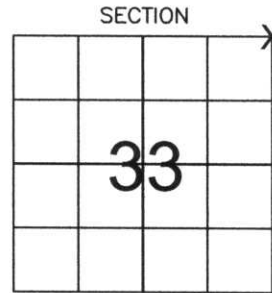
LINCOLN COUNTY COORDINATE: N: 105643.16
 E: 444467.27

ELEVATION-(FEET): _____ DATUM: _____

WEATHER: PARTLY CLOUDY

DATE OF SURVEY: 10-11-05 TEMPERATURE: 60 °F

SURVEY PARTY: NATHAN WINCENTSEN, KEITH WALKOWSKI



LOCATION (Indicated By X)



BASIS FOR MONUMENT LOCATION:

(DESCRIBE METHOD OF SURVEY AND CORNER AUTHENTICATION)

DUG FOR NORTHEAST CORNER WITH COUNTY GRADALL, FOUND GRANITE STONE 1.5 FEET BELOW ROAD SURFACE. ACCEPTED STONE AS CORNER LOCATION AND SET A 1" IRON PIPE ALONG THE NORTH SIDE. PERPETUATED CORNER AS SHOWN BELOW.

CERTIFIED CORRECT:

Keith J. Walkowski
KEITH J. WALKOWSKI
 Registered Land Surveyor
 DATE: Jan 3RD, 2006

FIELD BOOK NO. PINE RIVER PAGE NO. 4

COMPANY RIVERSIDE LAND SURVEYING LLC

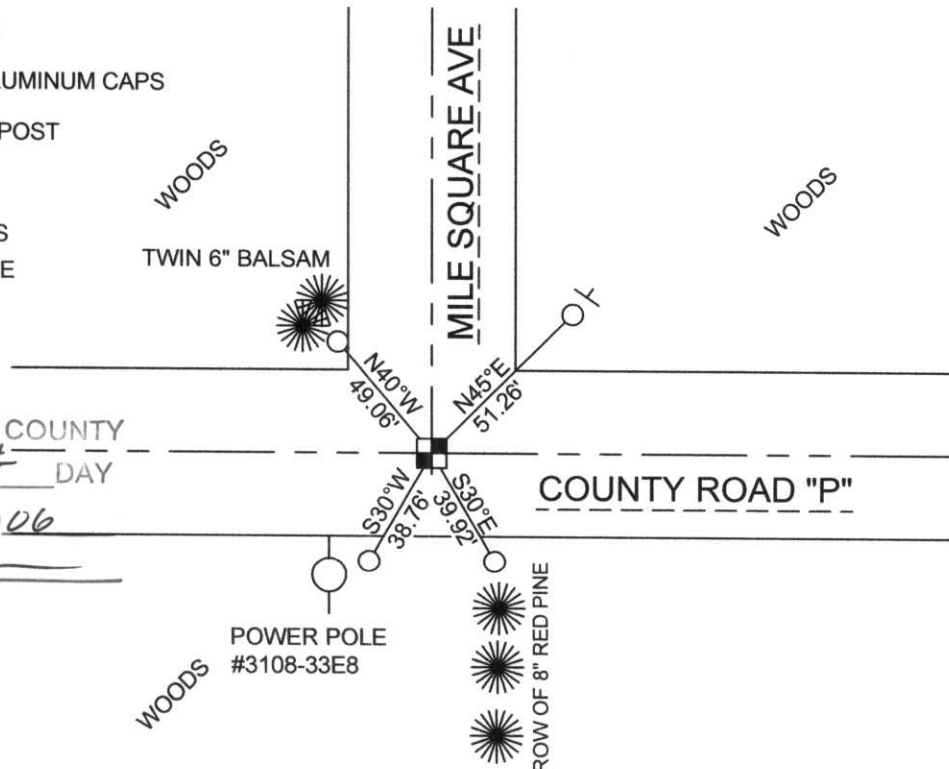
TIE SKETCH:

SHOW MINIMUM OF FOUR (4) HORIZONTAL TIE DISTANCES TO FIXED WITNESS MONUMENTS. DESCRIBE ALL MONUMENTS FOUND OR SET. CORRECT ALL DISTANCES SHOWN TO STANDARD TEMPERATURE OF 68° F.

- FOUND GRANITE STONE
- SET 3/4" REBAR WITH ALUMINUM CAPS
- VINYL SURVEY MARKER POST

NOTE

- ALL BEARINGS ARE FROM A HAND HELD MAGNETIC COMPASS
- THIS DRAWING IS NOT TO SCALE



RECEIVED BY LINCOLN COUNTY SURVEYOR THIS 6TH DAY OF January 2006
Tom Walker
 COUNTY SURVEYOR

