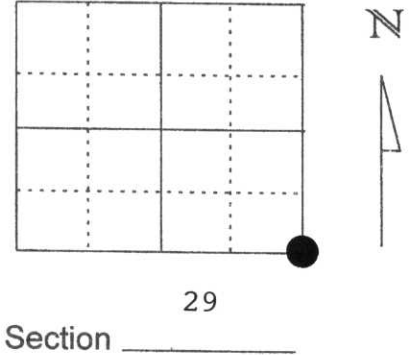


U.S. PUBLIC LAND SURVEY MONUMENT RECORD

Note: This form is intended and designed to fulfill all requirements of Wisconsin Administrative Code, Chapter A-E 5.02, U.S. Public Land Survey Monument Record (3) (a) (b) (c) (d) (e) (f) (g) (h) (l). An additional sheet may be added if necessary to conform with said requirements.

(a) Corner location: Township 31 North
 Range 8 East
 Town/City/Village TN. PINE RIVER
 County Lincoln



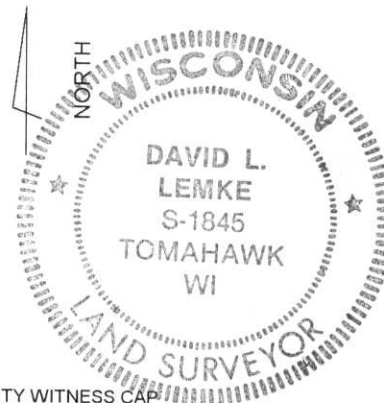
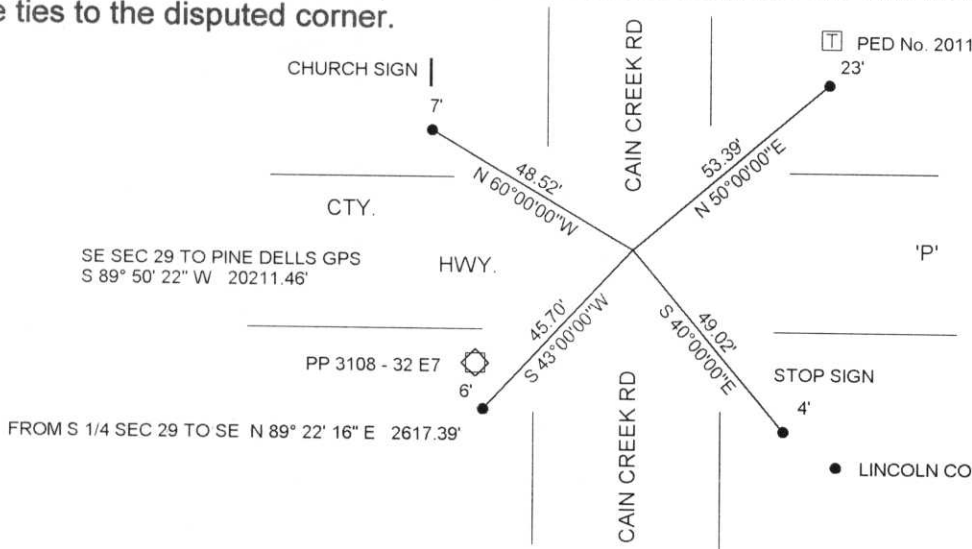
(b) (f) (g) (h) Description of monument found at this corner and if it was accepted, state all evidence (material, testimonial, occupational, plats, records, other monuments) used as a basis for accepting. If not accepted or if nothing was found, state evidence used as basis for establishing location. If reestablished through lost corner proportionate methods, indicate all monuments, distances and directions used to establish.

MAY 1997 EXCAVATED AND FOUND GRANITE STONE 4.5' BELOW PAVEMENT. CORNER FELL 1' NORTH OF C/L HWY. 'P', ON C/L OF CAIN CREEK RD. TO THE NORTH AND 3' EAST OF C/L CAIN CREEK RD. TO THE SOUTH. ESTABLISHED 4 TIES TO CORNER POSITION. SET 3/4" REBAR ON NORTH SIDE OF STONE.

MAY 1998 SET MAG NAIL FOR CORNER POSITION BY TIES FOR C/L TRAVERSE.

**RECEIVED AT LINCOLN COUNTY
 COURTHOUSE THIS 31st DAY
 OF June 1998.
Pat Pribe
 TAX DESCRIPTION OFFICE**

(c) (d) (e) Plan view of corner with ties to at least 4 witness monuments. If in disagreement with previously established corner, show the distances between the two corners and also indicate the ties to the disputed corner.



(l) I, DAVID L. LEMKE S-1845
 (type or print name) certify that the corner location on this record was determined by me or under my direction and control and that this U.S. Public Land Survey Monument Record is correct and complete to the best of my knowledge and belief.
David L. Lemke
 Signature _____ Date JUN. 03 1998

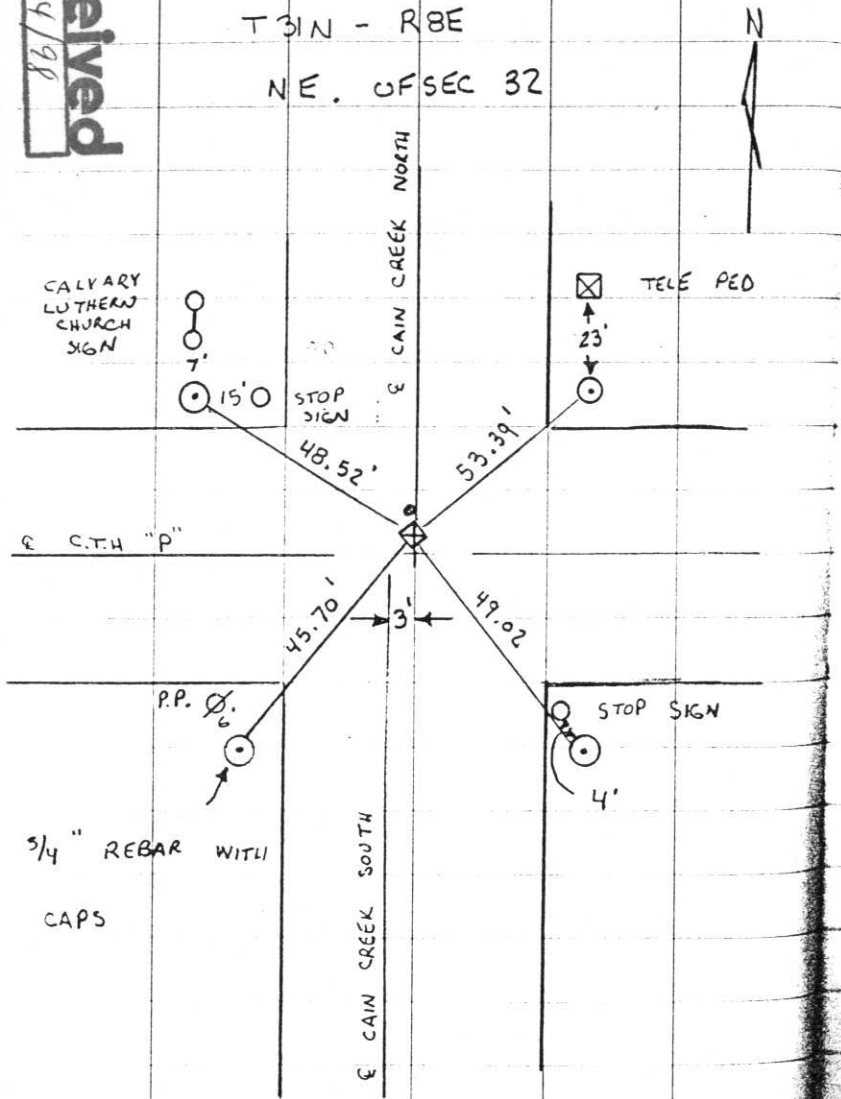
Index No. 0-9

Received
3/24/98

TOWN OF PINERIVER

T31N - R8E

NE. OF SEC 32



FOUND GRANITE STONE 4.5'
BELOW THE PAVEMENT.

LOCATE 1' NORTH OF E OF
C.T.H. "P" ON E OF CAIN
CREEK NORTH 3' EAST OF
E CAIN CREEK SOUTH.

SET 3/4" REBAR ON NORTH
SIDE OF MONUMENT.