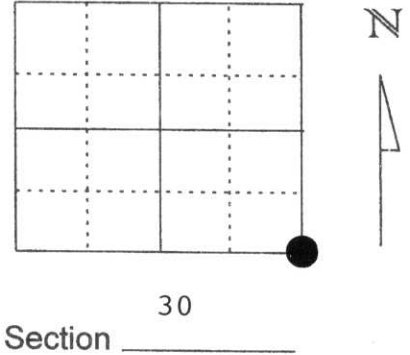


# U.S. PUBLIC LAND SURVEY MONUMENT RECORD

Note: This form is intended and designed to fulfill all requirements of Wisconsin Administrative Code, Chapter A-E 5.02, U.S. Public Land Survey Monument Record (3) (a) (b) (c) (d) (e) (f) (g) (h) (l). An additional sheet may be added if necessary to conform with said requirements.

(a) Corner location: Township 31 North  
 Range 8 East  
 Town/City/Village TN. PINE RIVER  
 County Lincoln



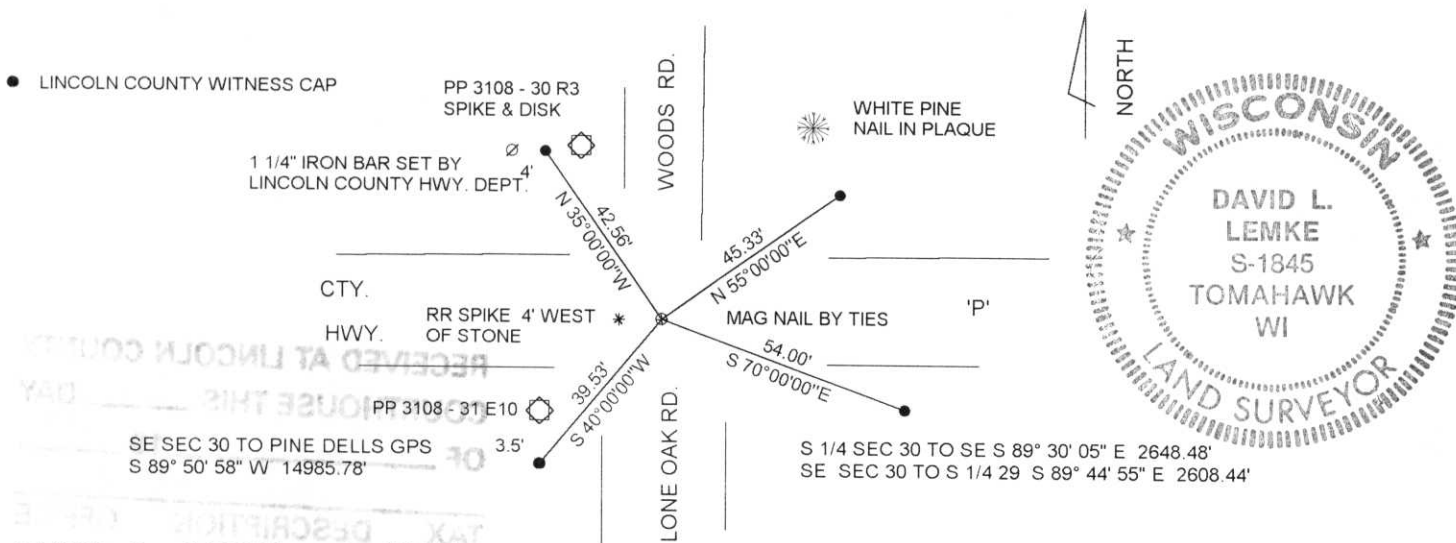
(b) (f) (g) (h) Description of monument found at this corner and if it was accepted, state all evidence (material, testimonial, occupational, plats, records, other monuments) used as a basis for accepting. If not accepted or if nothing was found, state evidence used as basis for establishing location. If reestablished through lost corner proportionate methods, indicate all monuments, distances and directions used to establish.

YEAR UNKNOWN GRANITE STONE SET FOR CORNER POSITION  
 CORNER POSITION ESTABLISHED BY LINCOLN COUNTY HIGHWAY DEPT. PROJECT No. S 0569 (4) - SHEET 5.

MARCH 1983 LA VERNE MOSHER SET A RR SPIKE FOR CORNER POSITION FOR THE ABOVE NOTED HIGHWAY PLAT. TIE SHEET FILED 3/22/83. RE-ESTABLISHED 5 TIE TO CORNER POSITION.

MAY 1997 EXCAVATED AND FOUND A GRANITE STONE 1.75' BELOW PAVEMENT. 1' SOUTH OF C/L HWY. 'P' & 4' WEST C/L LONE OAK RD. SET 3/4" REBAR NORTH SIDE OF STONE. ESTABLISHED 4 NEW WITNESS MONUMENTS TO CORNER POSITION. **NOTE:** RR SPIKE 4' WEST OF FOUND STONE.

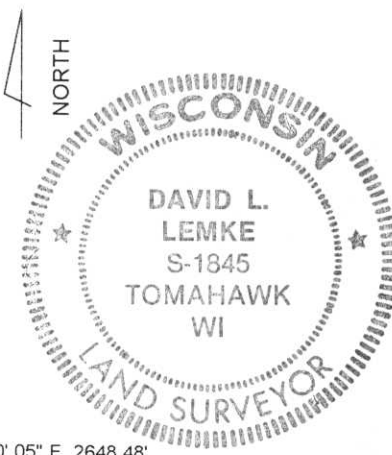
(c) (d) (e) Plan view of corner with ties to at least 4 witness monuments. If in disagreement with previously established corner, show the distances between the two corners and also indicate the ties to the disputed corner.



(l) I, DAVID L. LEMKE S-1845  
 (type or print name) certify that the corner location on this record was determined by me or under my direction and control and that this U.S. Public Land Survey Monument Record is correct and complete to the best of my knowledge and belief.

JUN. 03 1998

Signature \_\_\_\_\_ Date \_\_\_\_\_

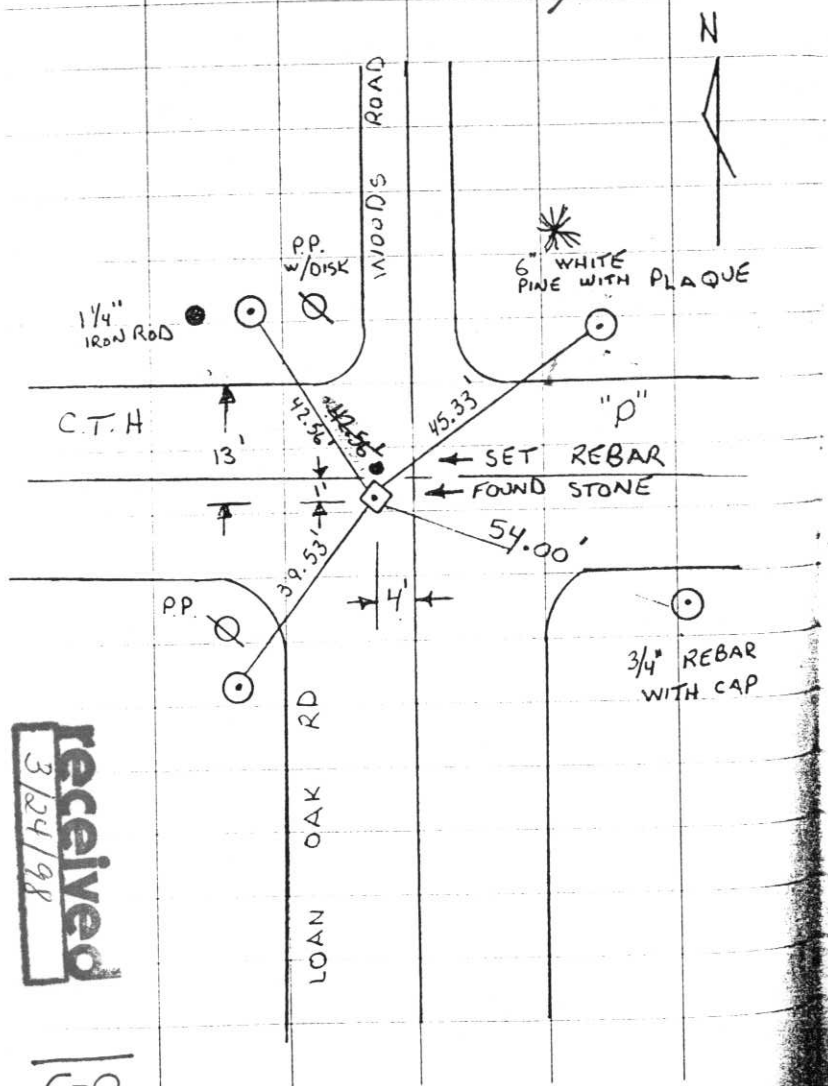


Index No. C-5

TOWN OF PINERIVER

T 31N R 8E

SECTION 32 NW ~~1/4~~ corner



FOUND GRANITE STONE 1.75'  
BELOW THE PAVEMENT.

LOCATED 1' SOUTH OF  $\odot$  OF  
C.T.H. "P" AND 4' WEST OF  
 $\odot$  OF LONE OAK RD.

SET 3/4" REBAR ON NORTH  
SIDE OF MONUMENT

NOTE: WHERE R.R. SPIKE WAS AND  
THE GRANITE STONE WHERE  
NOT IN THE SAME PLACE.  
STONE 4' EAST OF SPIKE.

received  
3/24/98

5-0

CERTIFIED LAND CORNER RESTORATION

Index No. U-5

State of Wisconsin }  
County of LINCOLN } ss.

History of original corner establishment:

Original government survey conducted in year of 1852-53 with wooden posts set for section and quarter corners. Subsequently, 6"x6"x36" red granite stone monuments were set during a remonumentation survey of later date (year unknown).

I LA VERNE H. MOSHER, do hereby certify that on the 21<sup>ST</sup> day of MARCH, 1983, I found evidence of the NORTHWEST corner of SECTION 32 Township 31, North, Range 8 EAST, Fourth, Principal Meridian, as described hereon; and that from this evidence I established a new monument and accessories as described hereon to perpetuate the original location of this corner.

Description of corner evidence found:

Corner point established from ties to cornerstone provided by Lincoln County Highway Department. These ties are shown on the official R/W plat of C.T.H. "P" (project S 0569(4), sheet 5) and consist of a 1 1/4" iron bar 46.66 feet Northwest of corner set by Lincoln County Highway Department and centerline stationing and alignment. Set a RR spike in bituminous roadway surface.

Resident witnesses:

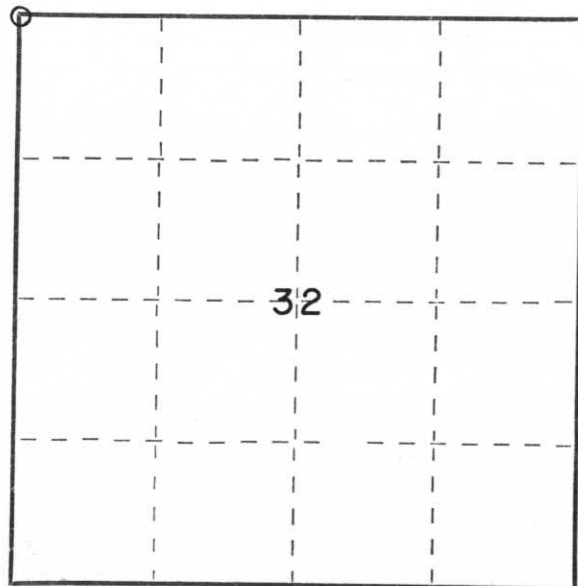
.....  
.....  
.....

Description of monument and accessories I established to perpetuate the original location of this corner:

Corner is a RR spike set in bituminous roadway

- NE 70.08' Nail in plaque on 6" White Pine
- SE 43.46' Set 1"x24" iron pipe 3' Southeast of street sign
- SW 33.86' Spike and disk on power pole
- NW 46.66' Existing 1 1/4" iron bar set by Lincoln County Highway Dept.
- NNW 42.02' Spike and disk on power pole

(See sketch on reverse)



○ = Corner monument restored.

Dated at Schofield, Wis., this 22nd day of March, 1983.

Signature LaVerne H. Mosher Title Reg. Land Surveyor Registration No. S-1188  
(County Surveyor, Registered Land Surveyor, or other duly authorized official)

Office of Register of Deeds, County of \_\_\_\_\_, I hereby certify that the within instrument was filed in this office for record on the \_\_\_\_\_ day of \_\_\_\_\_, 19\_\_\_\_ at \_\_\_\_\_ o'clock \_\_\_\_\_ M.

.....  
(Register of Deeds)

By.....Deputy