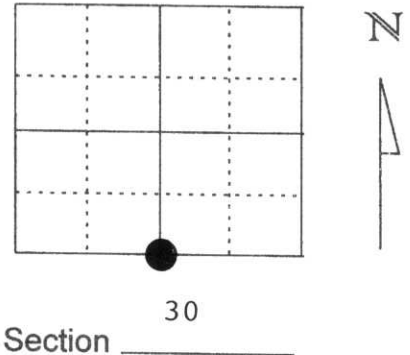


# U.S. PUBLIC LAND SURVEY MONUMENT RECORD

Note: This form is intended and designed to fulfill all requirements of Wisconsin Administrative Code, Chapter A-E 5.02, U.S. Public Land Survey Monument Record (3) (a) (b) (c) (d) (e) (f) (g) (h) (l). An additional sheet may be added if necessary to conform with said requirements.

(a) Corner location: Township 31 North  
 Range 8 East  
 Town/City/Village TN. OF PINE RIVER  
 County Lincoln



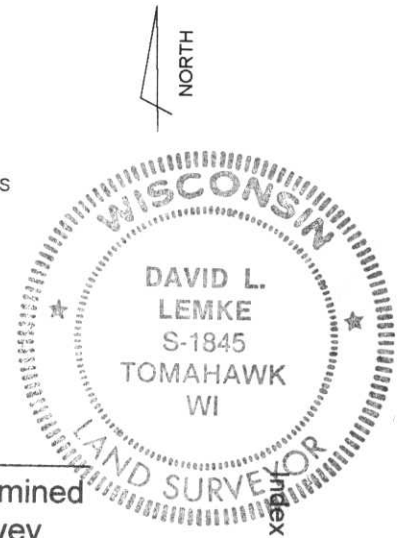
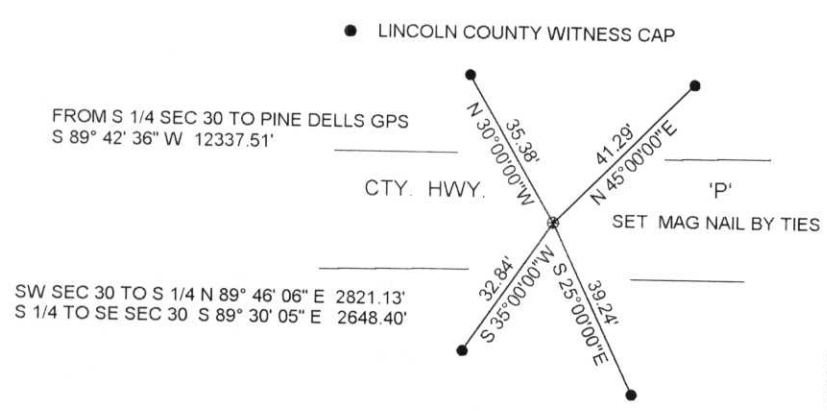
(b) (f) (g) (h) Description of monument found at this corner and if it was accepted, state all evidence (material, testimonial, occupational, plats, records, other monuments) used as a basis for accepting. If not accepted or if nothing was found, state evidence used as basis for establishing location. If reestablished through lost corner proportionate methods, indicate all monuments, distances and directions used to establish.

MAY 1997 EXCAVATED & FOUND GRANITE STONE 3' BELOW PAVEMENT. TOP BROKE OFF. SET 3/4" REBAR NORTH SIDE OF STONE. CORNER FALLS 1.5' SOUTH OF C/L HWY. 'P'. ESTABLISHED 4 TIES TO CORNER POSITION.

MAY 1998 SET MAG NAIL FOR CORNER POSITION BY TIES

RECEIVED AT LINCOLN COUNTY  
 COURTHOUSE THIS 3rd DAY  
 OF June 1998  
Pat Grube  
 TAX DESCRIPTION OFFICE

(c) (d) (e) Plan view of corner with ties to at least 4 witness monuments. If in disagreement with previously established corner, show the distances between the two corners and also indicate the ties to the disputed corner.



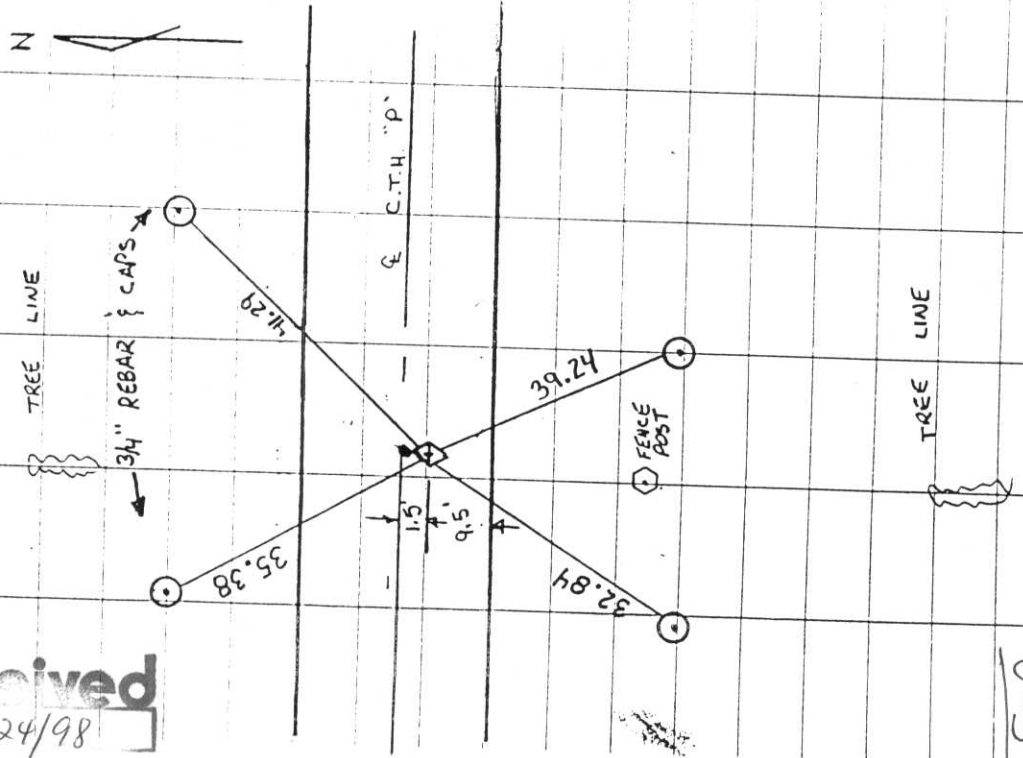
(l) I, DAVID L. LEMKE S-1845  
 (type or print name) certify that the corner location on this record was determined by me or under my direction and control and that this U.S. Public Land Survey Monument Record is correct and complete to the best of my knowledge and belief.

JUN. 03 1998

Signature \_\_\_\_\_ Date \_\_\_\_\_

Index No. 0-3

TOWN OF PINE RIVER  
 T 31N - R 8E  
 N 1/4 SECTION 31



received  
 3/24/98

5-14-97

J.E.S.

R.S.

A.F.

FOUND GRANITE STONE 3'

BELOW PAVEMENT - TOP OF

MONUMENT WAS BROKE OFF.

SET 3/4" REBAR ON NORTH

SIDE OF STONE

1.5' SOUTH OF CENTERLINE