

I, Kelly D. Callaway, do hereby  
 certify that on 4th, day of November 2004, I found  
 (evidence) of the W1/4

corner of Section 25, T31N, R8E,  
 Fourth Principal Meridian, and I re-established  
 said corner according to the Wisconsin Statutes  
 Description of corner evidence found  
 as shown and described hereon.

Dated this 22 day of November 2004

[Signature]  
 Signature

Land Surveyor  
 Title

Description of corner and witness monuments, references and accessories used to  
 perpetuate the original or re-established location of this corner

Witnesses to corner location:

KENNY ERON  
ERIC PETERSON  
DUSTIN BINDER

- ⊕ LINCOLN COUNTY ALUMINUM  
CAPPED WITNESS CORNER
- ⊗ 6"x6" GRANITE STONE

RECEIVED BY LINCOLN COUNTY  
 SURVEYOR THIS 22<sup>ND</sup> DAY  
 OF November 2004  
Tony Dall  
 COUNTY SURVEYOR

Survey Control Order

Horizontal:

Vertical:

Wisconsin County Coordinate System (Lincoln County)				
Corner Control Station Name	East (x)	North (Y)	Elevation (Z)	Zone
	455,047.92'	108,306.33'		

U.S. PUBLIC LAND SURVEY MONUMENT RECORD

History of Corner

ORIGINAL CORNER SET BY A.G.. ELLIS; F.S. ELLIS  
 IN FEBRUARY OF 1852.

DESCRIPTION OF CORNER EVIDENCE FOUND

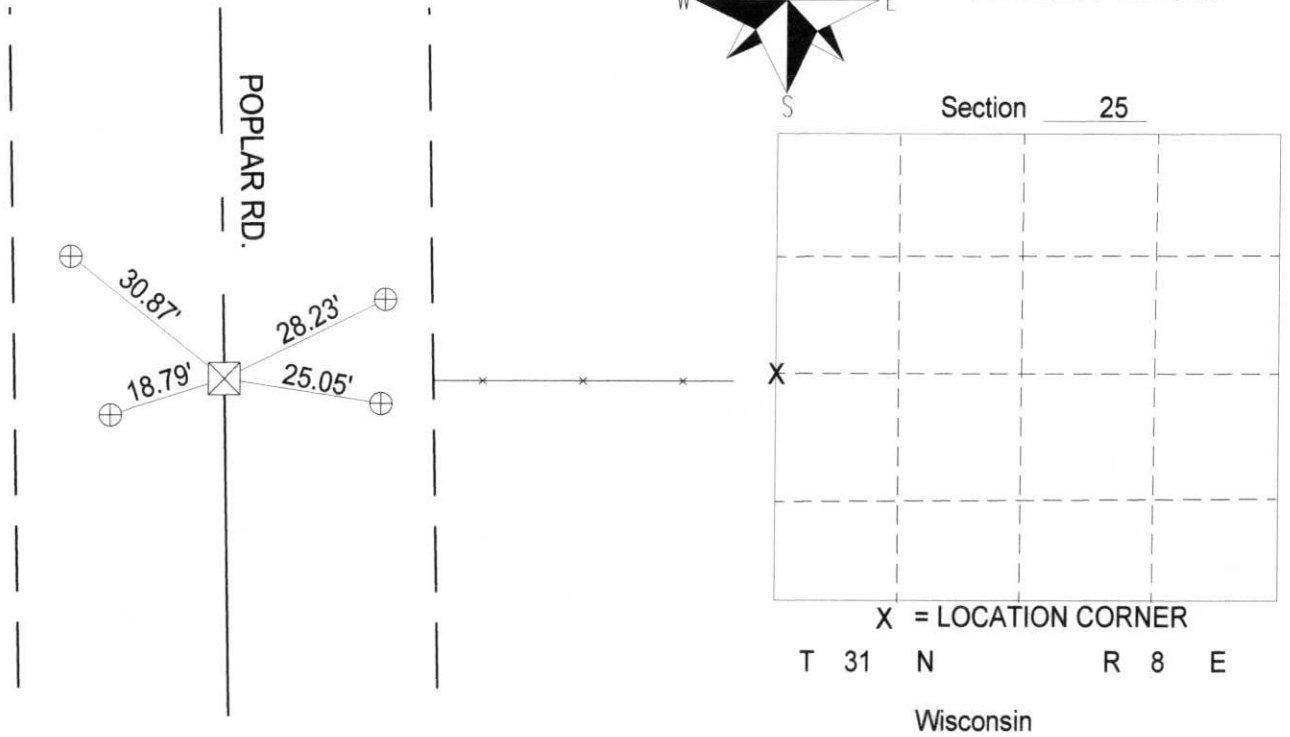
EXCAVATED A 4'X4' AREA AND FOUND A 6"x6" GRANITE  
 STONE 1' BELOW ROAD SURFACE. SET A 3/4" REBAR  
 ON THE NORTH SIDE OF STONE.



No. S-21



CENTRAL STAKING INC.  
 2523 POST RD.  
 STEVENS POINT, WI



X = LOCATION CORNER  
 T 31 N R 8 E  
 Wisconsin

Town PINE RIVER  
 County LINCOLN  
 Drafted By KDC