

Attachment to Tie Sheet S-17 T31N, R8E

Visited this corner on May 31, 2012 and found 4 Reference Monuments in good condition and 2 Reference Monuments missing. Existing Reference Monument ties cross well and used that position to reset the 2 missing Reference Monuments, the Southeast and Northwest (37.99'), per the Tie Sheet. All of the small trees shown on the Tie Sheet are gone. Set a white "T" Post near the Southeast Reference Monument. Field Book #5 Page 141.

Anthony Dallman *6/12/12*

Anthony Dallman

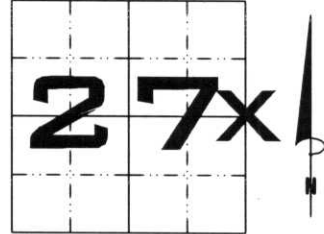
Lincoln County Surveyor



U.S. PUBLIC LAND SURVEY MONUMENT RECORD

NOTE: THIS FORM IS INTENDED AND DESIGNED TO FULFILL ALL REQUIREMENTS OF WISCONSIN ADMINISTRATIVE CODE, CHAPTER A-E 7.08 U.S. PUBLIC LAND SURVEY MONUMENT RECORD (3) (a) (b) (c) (d) (e) (f) (g) (h) (i). AN ADDITIONAL SHEET MAY BE ADDED IF NECESSARY TO CONFORM WITH SAID REQUIREMENTS.

(a) CORNER LOCATION: TOWNSHIP 31 NORTH
 RANGE 8 EAST/WEST
 TOWN/~~CITY~~/VILLAGE PINE RIVER
 COUNTY LINCOLN



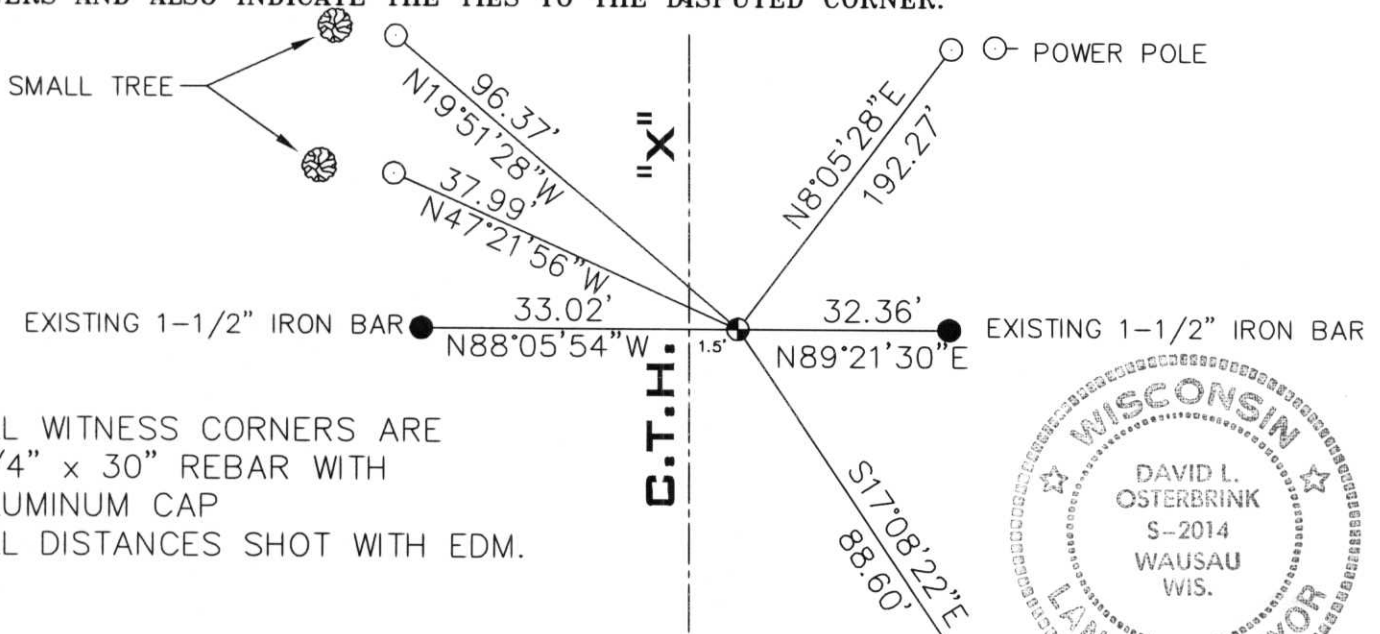
SECTION _____

(b) (f) (g) (h) DESCRIPTION OF MONUMENT FOUND AT THIS CORNER AND IF IT WAS ACCEPTED, STATE ALL EVIDENCE (MATERIAL, TESTIMONIAL, OCCUPATIONAL, PLATS, RECORDS, OTHER MONUMENTS) USED AS BASIS FOR ACCEPTING. IF NOT ACCEPTED OR IF NOTHING WAS FOUND, STATE EVIDENCE USED AS BASIS FOR ESTABLISHING LOCATION. IF REESTABLISHED THROUGH LOST CORNER PROPORTIONATE METHODS, INDICATE ALL MONUMENTS, DISTANCES AND DIRECTIONS USED TO ESTABLISH. INDICATE TYPE OF MONUMENT FOUND OR SET AND SIGN POST.

DUG DOWN 3', FOUND 1' x 6" x 6" GRANITE STONE LAYING DOWN. DUG DOWN ANOTHER FOOT, FOUND ANOTHER 1' x 6" x 6" PIECE OF STONE STANDING UP. DUG BY HAND, FOUND NO MORE PIECES. HELD AS CORNER. SET LINCOLN COUNTY BERNTSEN MONUMENT FOR CORNER. TIED OUT.

RECEIVED AT LINCOLN COUNTY
 COURTHOUSE THIS 26th DAY
 OF Sept 1997
Pat Pulte
 TAX DESCRIPTION OFFICE

(c) (d) (e) PLAN VIEW OF CORNER WITH TIES TO AT LEAST 4 WITNESS MONUMENTS. IF IN DISAGREEMENT WITH PREVIOUSLY ESTABLISHED CORNER, SHOW THE DISTANCES BETWEEN THE TWO CORNERS AND ALSO INDICATE THE TIES TO THE DISPUTED CORNER.



ALL WITNESS CORNERS ARE
 3/4" x 30" REBAR WITH
 ALUMINUM CAP
 ALL DISTANCES SHOT WITH EDM.



(i) I, DAVID L. OSTERBRINK
 (TYPE OR PRINT NAME) CERTIFY THAT THE CORNER
 LOCATION ON THIS RECORD WAS DETERMINED BY ME
 OR UNDER MY DIRECTION AND CONTROL AND THAT
 THIS U.S. PUBLIC LAND SURVEY MONUMENT RECORD
 IS CORRECT AND COMPLETE TO THE BEST OF MY
 KNOWLEDGE AND BELIEF.

David L. Osterbrink 8-4-97
 SIGNATURE DATE

SMALL TREE CARSONITE SIGN

STAMP