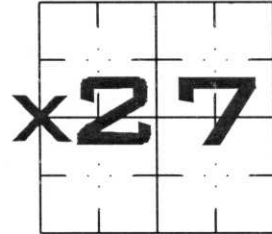


U.S. PUBLIC LAND SURVEY MONUMENT RECORD

NOTE: THIS FORM IS INTENDED AND DESIGNED TO FULFILL ALL REQUIREMENTS OF WISCONSIN ADMINISTRATIVE CODE, CHAPTER A-E 7.08 U.S. PUBLIC LAND SURVEY MONUMENT RECORD (3) (a) (b) (c) (d) (e) (f) (g) (h) (i). AN ADDITIONAL SHEET MAY BE ADDED IF NECESSARY TO CONFORM WITH SAID REQUIREMENTS.

(a) CORNER LOCATION: TOWNSHIP 31 NORTH
 RANGE 8 EAST/WEST
 TOWN/CITY/VILLAGE PINE RIVER
 COUNTY LINCOLN



SECTION _____

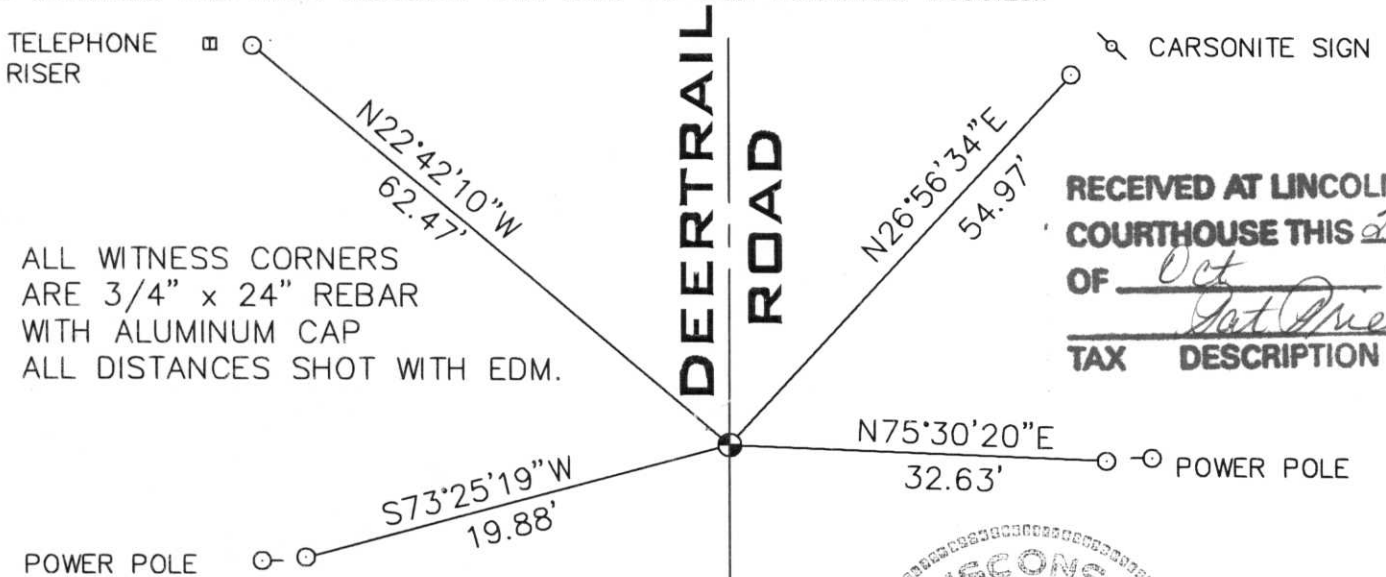
(b) (f) (g) (h) DESCRIPTION OF MONUMENT FOUND AT THIS CORNER AND IF IT WAS ACCEPTED, STATE ALL EVIDENCE (MATERIAL, TESTIMONIAL, OCCUPATIONAL, PLATS, RECORDS, OTHER MONUMENTS) USED AS BASIS FOR ACCEPTING. IF NOT ACCEPTED OR IF NOTHING WAS FOUND, STATE EVIDENCE USED AS BASIS FOR ESTABLISHING LOCATION. IF REESTABLISHED THROUGH LOST CORNER PROPORTIONATE METHODS, INDICATE ALL MONUMENTS, DISTANCES AND DIRECTIONS USED TO ESTABLISH. INDICATE TYPE OF MONUMENT FOUND OR SET AND SIGN POST.

LOCATED ROAD CENTER LINE INTERSECTION AT NORTHWEST CORNER, AND ROAD CENTER LINE INTERSECTION AT SOUTHWEST CORNER. MEASURED DISTANCE, AND DUG FOR CORNER AT SPLIT DISTANCE. 40 FENCE TO NORTH MATCHED SPLIT DISTANCE WITHIN 4 FEET. NO FENCE LINES AT WEST 1/4. DUG THROUGH BLACKTOP TO UNDISTURBED SOIL. FOUND NO EVIDENCE OF CORNER, OTHER THAN PIECES OF BARB WIRE. HELD DISTANCE SPLIT, BUT SET ON CENTER LINE OF ROAD. SET BERNTSEN MONUMENT, TIED OUT. 8-4-97

10-14-97 LINCOLN COUNTY WANTED ME TO DIG FOR THE NW CORNER, AND SW CORNER. THE COUNTY HIGHWAY DEPARTMENT WOULD NOT LET ME DIG IN C.T.H. P AT THE SW CORNER.

I HAVE USED THE BEST AVAILABLE EVIDENCE TO SET THE WEST 1/4 CORNER OF SECTION 27-31-8.

(c) (d) (e) PLAN VIEW OF CORNER WITH TIES TO AT LEAST 4 WITNESS MONUMENTS. IF IN DISAGREEMENT WITH PREVIOUSLY ESTABLISHED CORNER, SHOW THE DISTANCES BETWEEN THE TWO CORNERS AND ALSO INDICATE THE TIES TO THE DISPUTED CORNER.



RECEIVED AT LINCOLN COU
 COURTHOUSE THIS 27th
 OF Oct 1997
(Signature)
 TAX DESCRIPTION OF



(i) I, DAVID L. OSTERBRINK RLS NO. S-2014
 (TYPE OR PRINT NAME) CERTIFY THAT THE CORNER LOCATION ON THIS RECORD WAS DETERMINED BY ME OR UNDER MY DIRECTION AND CONTROL AND THAT THIS U.S. PUBLIC LAND SURVEY MONUMENT RECORD IS CORRECT AND COMPLETE TO THE BEST OF MY KNOWLEDGE AND BELIEF.

(Signature)
 SIGNATURE

8-4-97 REVISED 10-14-97
 DATE

STAMP

INDEX NO. S-13