

# Attachment to Tie Sheet Q-25, T31N, R8E

I visited corner on 08/14/2013; Book 6, pg. 55. I found a P.K. Nail at the corner location and four WisDOT stamped Aluminum Monument reference ties. The P.K. Nail did not match the intersection of the existing ties. I removed the P.K. Nail and set a Berntsen Survey Marker Nail at the intersection of said reference ties.

Anthony R. Dallman 7/27/15

Anthony R. Dallman, PLS-2405

Lincoln County Surveyor



# LINCOLN COUNTY U.S. PUBLIC LAND SURVEY MONUMENT LOCATION RECORD

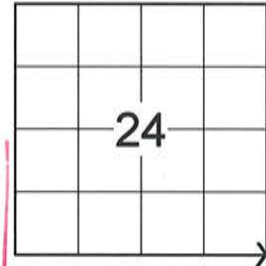
SECTION 24  
TOWNSHIP 31 N  
RANGE 8 E

Q-25  
NO.

LANDMARK  BENCHMARK \_\_\_\_\_ FOUND   
CORNER IDENTITY: SOUTHEAST CORNER SECTION 24 (SNM-1 NAIL) SET   
RE-SET   
RE-TIED

PINE RIVER  
CITY, VILLAGE, TOWN  
SECTION

LANGLADE COUNTY COORDINATE: N: 110868.6440  
E: 460341.3720



ELEVATION-(FEET): \_\_\_\_\_ DATUM: \_\_\_\_\_

WEATHER: CLEAR AND SUNNY

DATE OF SURVEY: 8/12/2014 TEMPERATURE: 75 °F

SURVEY PARTY: CHRIS FIERI & IAN FIELD

**BASIS FOR MONUMENT LOCATION:**  
(DESCRIBE METHOD OF SURVEY AND CORNER AUTHENTICATION)

3/29/1990 - William Kelly S-1098 recovered an existing stone monument at this corner position. Set a P.K. Nail over the stone and made four (4) reference monuments to perpetuate the corner location.

5/10/1994 - Barrientos and Associates visited this corner and recovered the P.K. Nail of record along with all four (4) witness monuments from the previous tiesheet. They set four (4) Berntsen 3" x 30" magnetic aluminum monuments to comply with DOT specs.

8/12/2014 - I recovered a Berntsen SNM-1 Nail at the corner location. I also recovered all eight (8) reference monuments from the previous tiesheet. Returned to the corner after the re-surfacing of State Highway "64" and set a Berntsen SNM-1 Nail at the corner location.

RECEIVED BY LINCOLN COUNTY  
SURVEYOR THIS 4<sup>TH</sup> DAY  
OF December 20 14  
Tony Dahn  
COUNTY SURVEYOR

LOCATION  
(Indicated By X)



CERTIFIED CORRECT:

*Christopher L. Fieri*

CHRISTOPHER L. FIERI S-2954

Registered Land Surveyor

DATE: 11-20-2014

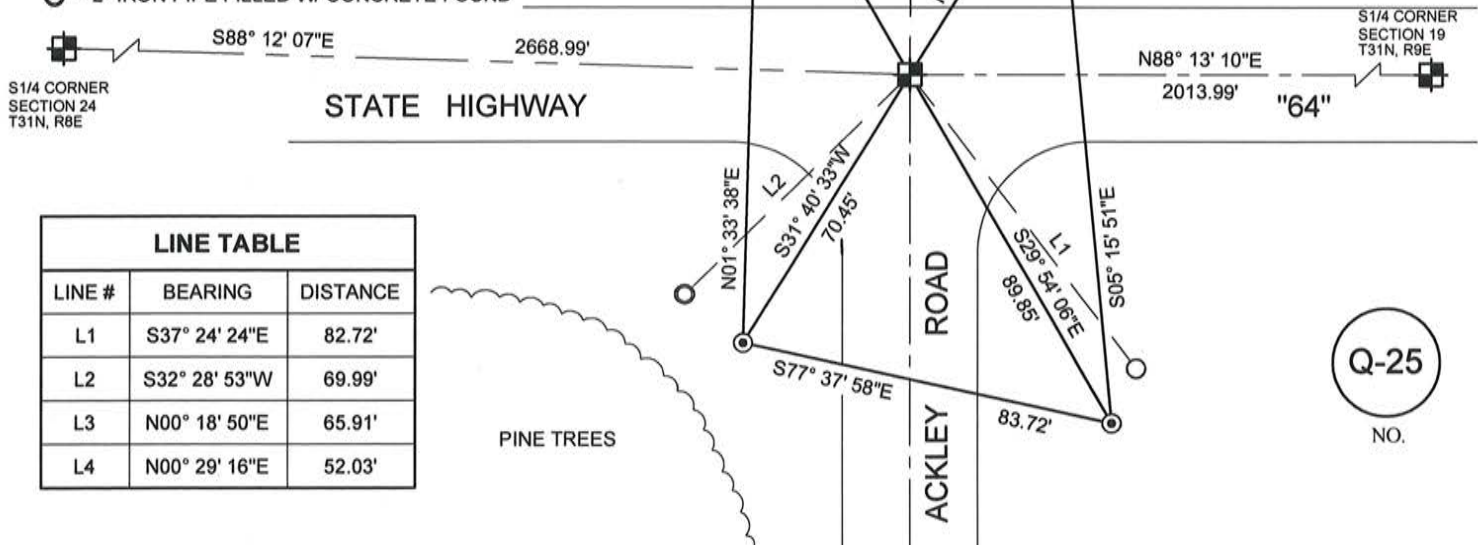
FIELD BOOK NO. S-12 PAGE NO. 62

COMPANY RIVERSIDE LAND SURVEYING LLC

## TIE SKETCH:

- BERNTSEN SNM-1 NAIL SET
- 1" O.D. IRON PIPE FOUND
- WISDOT ALUMINUM MONUMENT FOUND
- LANGLADE COUNTY ALUMINUM WITNESS MOMUMENT FOUND
- 3/4" IRON BAR W/ DOT CAP FOUND
- 2" IRON PIPE FILLED W/ CONCRETE FOUND

BEARINGS ARE BASED ON THE LINCOLN COUNTY COORDINATE SYSTEM NAD 83 (2011) AND REFERENCED TO THE SOUTH LINE OF THE SOUTHEAST 1/4 OF SECTION 24, T31N, R8E MEASURED TO BEAR N88° 12' 07"W



LINE TABLE		
LINE #	BEARING	DISTANCE
L1	S37° 24' 24"E	82.72'
L2	S32° 28' 53"W	69.99'
L3	N00° 18' 50"E	65.91'
L4	N00° 29' 16"E	52.03'

Q-25  
NO.

**RECORD AND CERTIFICATION OF U.S. PUBLIC LAND SURVEY CONTROL STATION**

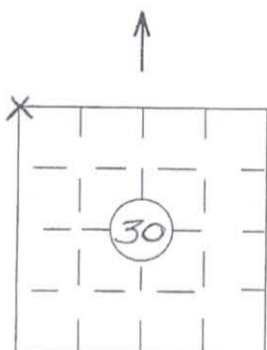
Wisconsin Department of Transportation

ED716 687

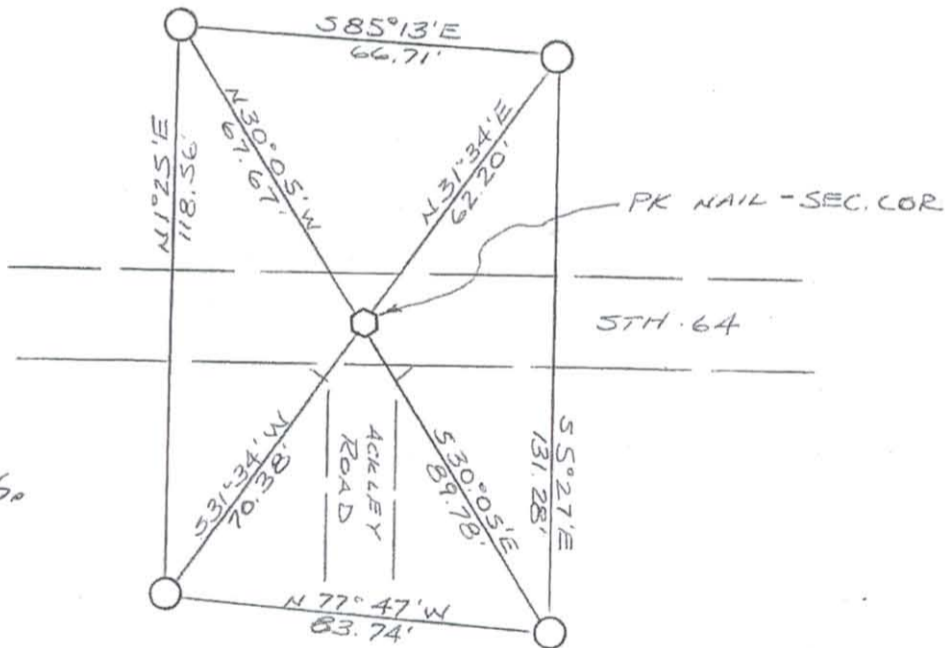
District <b>7</b>	Project ID <b>9015-06-70</b>	Located By <b>R.B. JOHNSON - SURVEY CREW CHIEF</b>		
Corner <b>N.W. COR. SEC. 30</b>	Township <b>31 N</b>	Range (E,W) <b>9 E</b>	County <b>LANGLADE</b>	
Wisconsin Coordinates <b>BY BARRIENTOS</b>	East (X) <b>2,148,168.203</b>	North (Y) <b>479,847.553</b>	Elevation (Z)	Zone <b>C</b>
Control Station Name	East (X)	North (Y)	Elevation (Z)	Zone
Horizontal - <b>NORTH AMERICAN, 1927</b>		CONTROL DATUM Vertical - <b>MEAN SEA LEVEL, 1929 ADJUSTMENT</b>		
Horizontal - _____ Order _____		SURVEY CONTROL Vertical - _____ Order _____		

**SKETCH**

43108240000



**LOCATION SKETCH**  
(Location of landmark indicated by 'X')



11/94  
D.T. SET PK NAIL  
FROM THESE TIES.  
D. Rusty

I hereby certify that on the date of MAY 10, 1994 the above corner was located by a marker and/or references established by

BARRIENTOS & ASSOC.  
(registered land surveyor) (registration no.)

I further certify that to perpetuate the location of said corner, on the date of MAY 10, 1994 at the exact location thereof, a permanent marker or witness monuments consisting of

FOUR 3" x 30" MAGNETIC ALUMINUM BERNTSEN MONUMENTS were located as shown above.

Jack R. Wallin - SURVEY COORDINATOR

- ADDITIONAL TIES - FROM CORNER TO:
1. 3/4" IRON PIPE  
S37°36'E - 82.71'
  2. 4" CONC. FILLED IRON PIPE  
S32°36'W - 70.03'
  3. WISDOT R/W RE-BAR  
N0°22'E - 51.98'
  4. LANGLADE CO. WITNESS COR.  
N0°19'E - 65.95'

N.W. COR (CORNER)  
30 (SECTION)  
31 N (TOWN)  
9 E (RANGE)

Signature (District Survey Supervisor)

Dave Kuder 5/23/94

Q-25

# U.S. PUBLIC LAND SURVEY MONUMENT RECORD

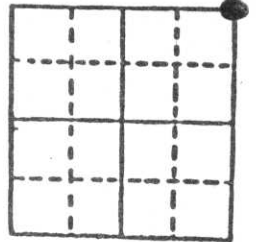
**Note:** This form is intended and designed to fulfill all requirements of Wisconsin Administrative Code, Chapter A-E 5.02, U.S. Public Land Survey Monument Record (3) (a) (b) (c) (d) (e) (f) (g) (h) (i). An additional sheet may be added if necessary to conform with said requirements.

(a) Corner location: Township 31 North

Range 8 East

Town EAST PART PINE RIVER

County LINCOLN



Section 25

b) (f) (g) (h) Description of monument found at this corner and if it was accepted, state all evidence (material, testimonial, occupational, plats, records, other monuments) used as a basis for accepting. If not accepted or if nothing was found, state evidence used as basis for establishing location. If reestablished through lost corner proportionate methods, indicate all monuments, distances and directions used to establish.

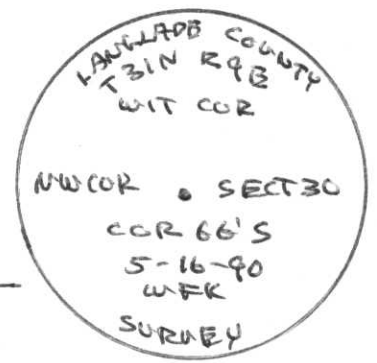
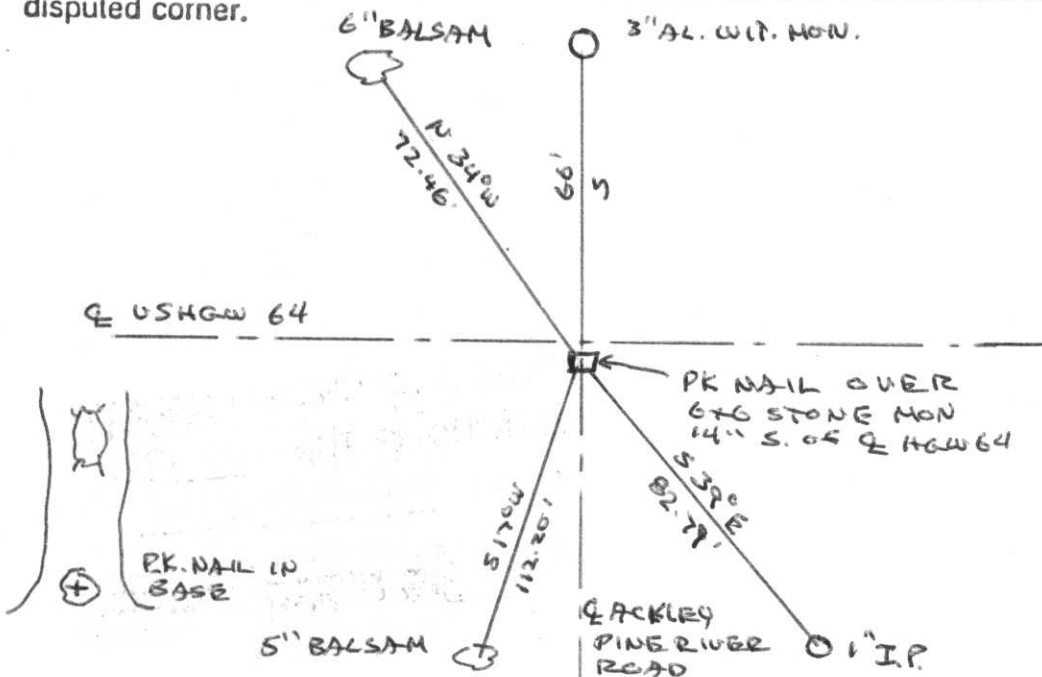
ORIGINAL CORNER ESTABLISHED BY J.M. MARSH IN  
JUNE-JULY 1851

LOCATED 6x6 STONE MONUMENT 14" SOUTH OF E  
US HW 64

SET P.K. NAIL OVER STONE MONUMENT

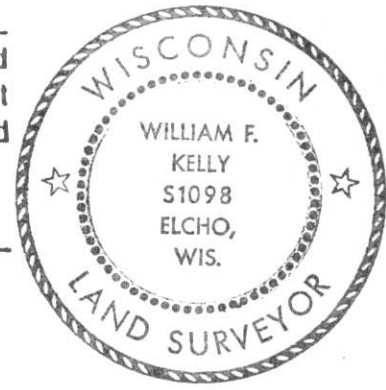
SET WITNESS MONUMENTS (LANGLADE CO. MON.)

c) (d) (e) Plan view of corner with ties to at least 4 witness monuments. If in disagreement with previously established corner, show the distances between the two corners and also indicate the ties to the disputed corner.



(i) I, WILLIAM F. KELLY  
(type or print name) certify that the corner location on this record was determined by me or under my direction and control and that this U.S. Public Land Survey Monument Record is correct and complete to the best of my knowledge and belief.

William F. Kelly                      11-14-90  
Signature                                      Date



N  
MAG

Index No. R-25  
Q-25

