

# LINCOLN COUNTY U.S. PUBLIC LAND SURVEY MONUMENT LOCATION RECORD

SECTION 23  
TOWNSHIP 31 N  
RANGE 8 E

Q-21

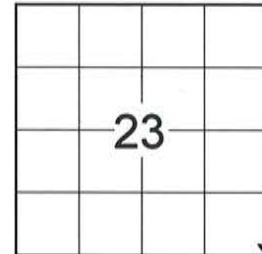
NO.

LANDMARK  BENCHMARK \_\_\_\_\_

FOUND   
SET   
RESET   
RE-TIED

PINE RIVER  
CITY, VILLAGE, TOWN  
SECTION

CORNER IDENTITY: SOUTHEAST CORNER SECTION 23 (SNM-1 NAIL)  
LINCOLN COUNTY COORDINATE: N: 110949.5310  
E: 454995.8440



ELEVATION-(FEET): \_\_\_\_\_ DATUM: \_\_\_\_\_

WEATHER: CLEAR AND SUNNY

DATE OF SURVEY: 9/8/2014 TEMPERATURE: 65 °F

SURVEY PARTY: KEITH WALKOWSKI AND CHRIS FIERI

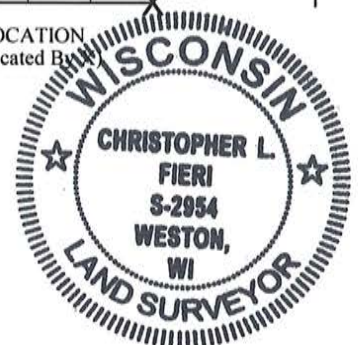
## BASIS FOR MONUMENT LOCATION:

(DESCRIBE METHOD OF SURVEY AND CORNER AUTHENTICATION)

1/3/2004 - K. Walkowski S-2717 searched for the corner and found a Survey Marker Nail from previous surveys of record at the centerline intersection of S.T.H. "64" and Poplar Lane. This location is also indicated on S.T.H. "64" right-of-way plat Project #T0393(1). He accepted this location as the best available evidence and set witness monuments to perpetuate the corner.

9/15/2014 - I visited the corner location prior to the resurfacing of Highway "64" and recovered the Survey Marker Nail of record. Also recovered all four (4) witness monuments from the previous corner restoration form. Distances checked well. Set four (4) Berntsen SSDR-130 witness monuments and returned after construction to set a Berntsen SNM-1 Nail at the corner location.

LOCATION  
(Indicated By)



CERTIFIED CORRECT:

*Christopher L. Fieri*

CHRISTOPHER L. FIERI S-2954  
Registered Land Surveyor

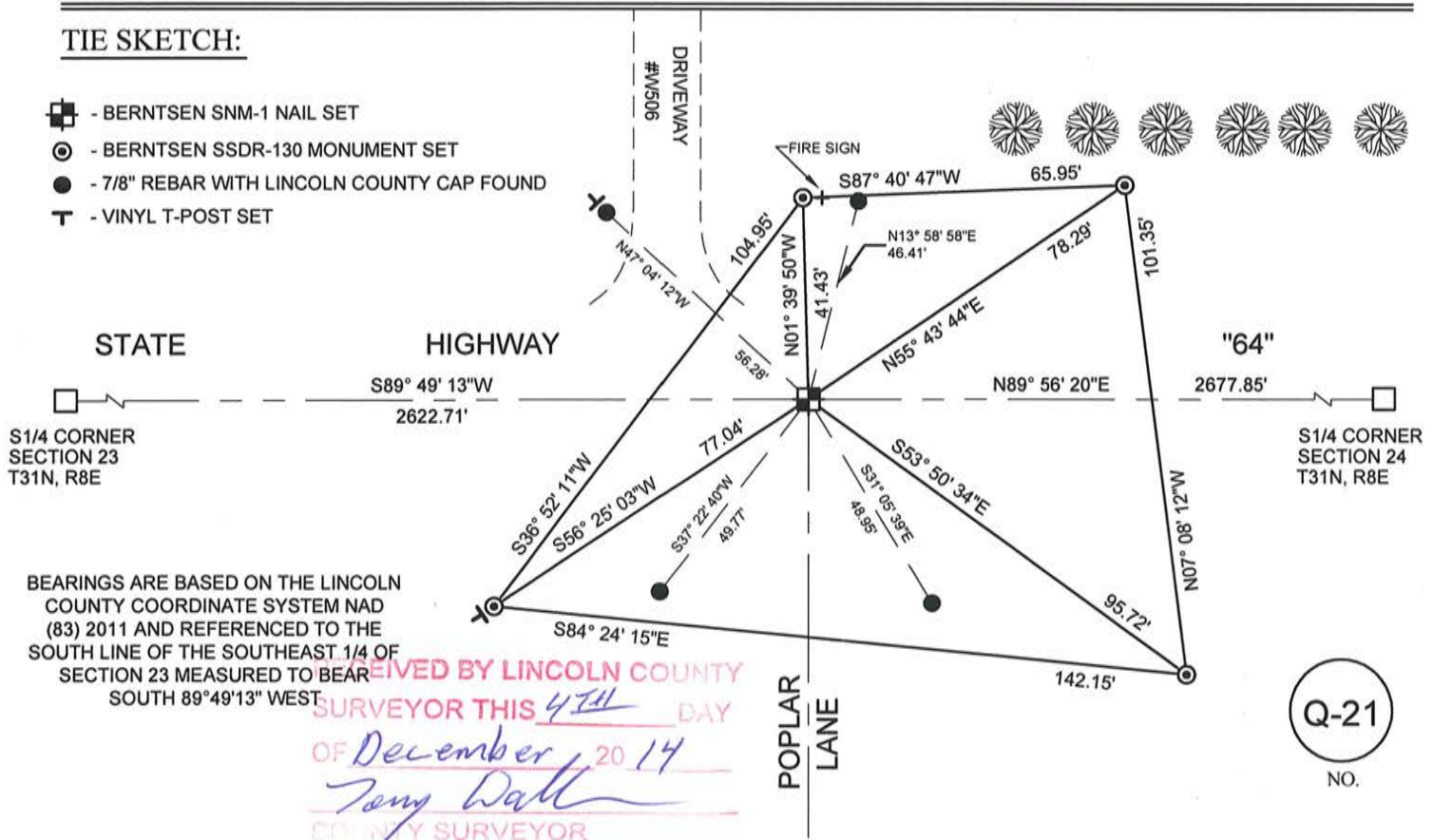
DATE: 11-20-2014

FIELD BOOK NO. 41 PAGE NO. 14

COMPANY RIVERSIDE LAND SURVEYING LLC

## TIE SKETCH:

- BERNTSEN SNM-1 NAIL SET
- BERNTSEN SSDR-130 MONUMENT SET
- 7/8" REBAR WITH LINCOLN COUNTY CAP FOUND
- VINYL T-POST SET



BEARINGS ARE BASED ON THE LINCOLN COUNTY COORDINATE SYSTEM NAD (83) 2011 AND REFERENCED TO THE SOUTH LINE OF THE SOUTHEAST 1/4 OF SECTION 23 MEASURED TO BEAR SOUTH 89°49'13" WEST

RECEIVED BY LINCOLN COUNTY SURVEYOR THIS 4TH DAY OF December 20 14  
*Tony Datt*  
COUNTY SURVEYOR

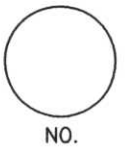
Q-21

NO.

# LINCOLN COUNTY U.S. PUBLIC LAND SURVEY MONUMENT LOCATION RECORD

CORNER NUMBER 233188

SECTION 23  
 TOWNSHIP 31 NORTH  
 RANGE 8 EAST



LANDMARK       BENCHMARK \_\_\_\_\_  
 CORNER IDENTITY: SOUTHEAST CORNER

FOUND   
 SET   
 RESET   
 RE-TIED

PINE RIVER  
 CITY, VILLAGE, TOWN

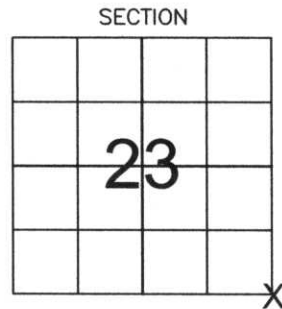
LINCOLN COUNTY COORDINATE: N: 110949.50  
 E: 454995.92

ELEVATION-(FEET): \_\_\_\_\_ DATUM: \_\_\_\_\_

WEATHER: SNOWING

DATE OF SURVEY: 12-01-05 TEMPERATURE: 20 °F

SURVEY PARTY: NATHAN WINCENTSEN, KEITH WALKOWSKI



LOCATION (Indicated By X)



**BASIS FOR MONUMENT LOCATION:**  
 (DESCRIBE METHOD OF SURVEY AND CORNER AUTHENTICATION)

UNABLE TO DIG IN S.T.H. "64" PER WDOT. SEARCHED FOR SOUTHEAST CORNER AND FOUND SMP NAIL FROM PREVIOUS SURVEYS OF RECORD AT CENTERLINE CENTERLINE INTERSECTION. THIS LOCATION IS ALSO INDICATED ON S.T.H. "64" RIGHT-OF-WAY PLAT PROJECT #T0393(1). WE ACCEPTED THIS LOCATION AS BEST AVAILABLE EVIDENCE AND PERPETUATED AS SHOWN BELOW.

CERTIFIED CORRECT:

Keith J. Walkowski  
KEITH J. WALKOWSKI  
 Registered Land Surveyor  
 DATE: Jan. 3RD, 2006

FIELD BOOK NO. PINE RIVER PAGE NO. 35

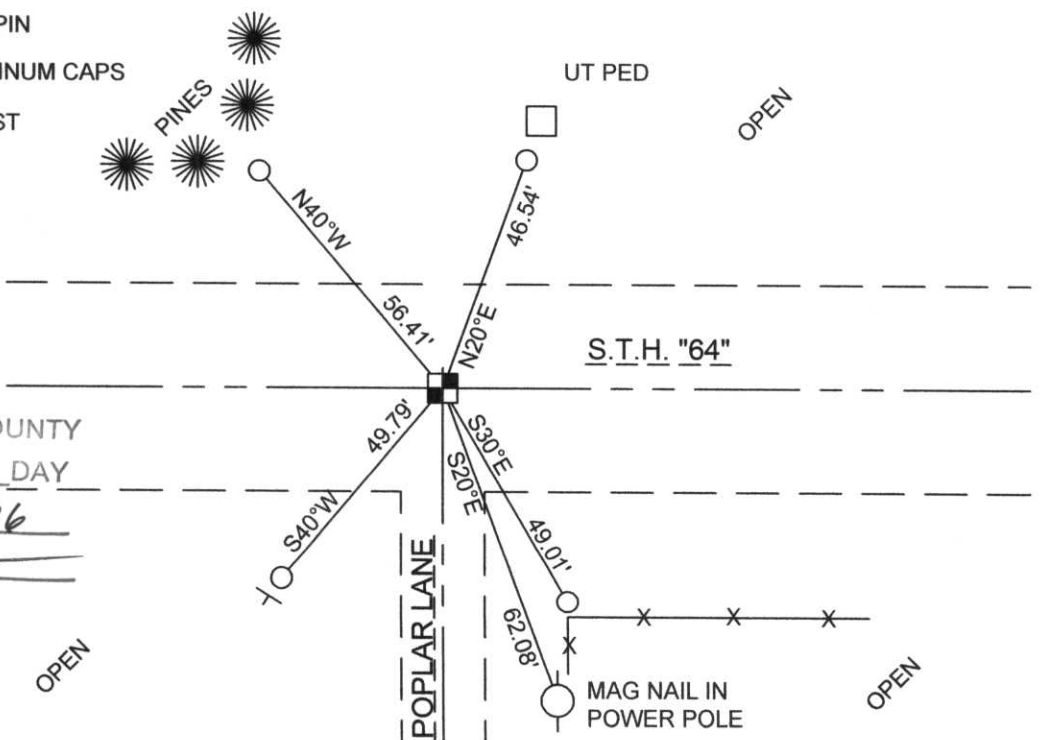
COMPANY RIVERSIDE LAND SURVEYING LLC

**TIE SKETCH:** SHOW MINIMUM OF FOUR (4) HORIZONTAL TIE DISTANCES TO FIXED WITNESS MONUMENTS. DESCRIBE ALL MONUMENTS FOUND OR SET. CORRECT ALL DISTANCES SHOWN TO STANDARD TEMPERATURE OF 68° F.

- FOUND SURVEY MARKING PIN
- SET 3/4" REBAR WITH ALUMINUM CAPS
- VINYL SURVEY MARKER POST

**NOTE**

- ALL BEARINGS ARE FROM A HAND HELD MAGNETIC COMPASS
- THIS DRAWING IS NOT TO SCALE



RECEIVED BY LINCOLN COUNTY SURVEYOR THIS 6TH DAY OF January 20 06  
Tommy Walker  
 COUNTY SURVEYOR

Q-21