

# U.S. PUBLIC LAND SURVEY MONUMENT RECORD

Note: This form is intended and designed to fulfill all requirements of Wisconsin Administrative Code. Chapter A-E 7.08 U.S. Public Land Survey Monument Record (3)(a)(b)(c)(d)(e)(f)(g)(h)(i). An additional sheet may be added to if necessary to conform with said requirements.

(a) Corner Location: South Quarter Corner  
 Section 21,  
 Township 31 North,  
 Range 8 East,  
 Town of Pine River,  
 Lincoln County, Wisconsin  
 Observed coordinates  
 Lincoln County Grid NAD83(2011)  
 N: 110936.36  
 E: 441827.83



(b)(f)(g)(h) Description of monument found at this corner and if it was accepted, state all evidence (material, testimonial, occupational, plats, records, other monuments) used as a basis for accepting. If not accepted or if nothing was found, state evidence used as basis for establishing location. If reestablishment through lost corner proportionate methods, indicate all monuments, distances and directions used to establish. Indicate type of monument found or set and sign post.

1852 Feb. - Ellis, A.; Ellis, F.S - Marked an 18" birch for Quarter Section Post.

---- - Remonumentation surveys through out portions of Lincoln County commonly set granite stones.

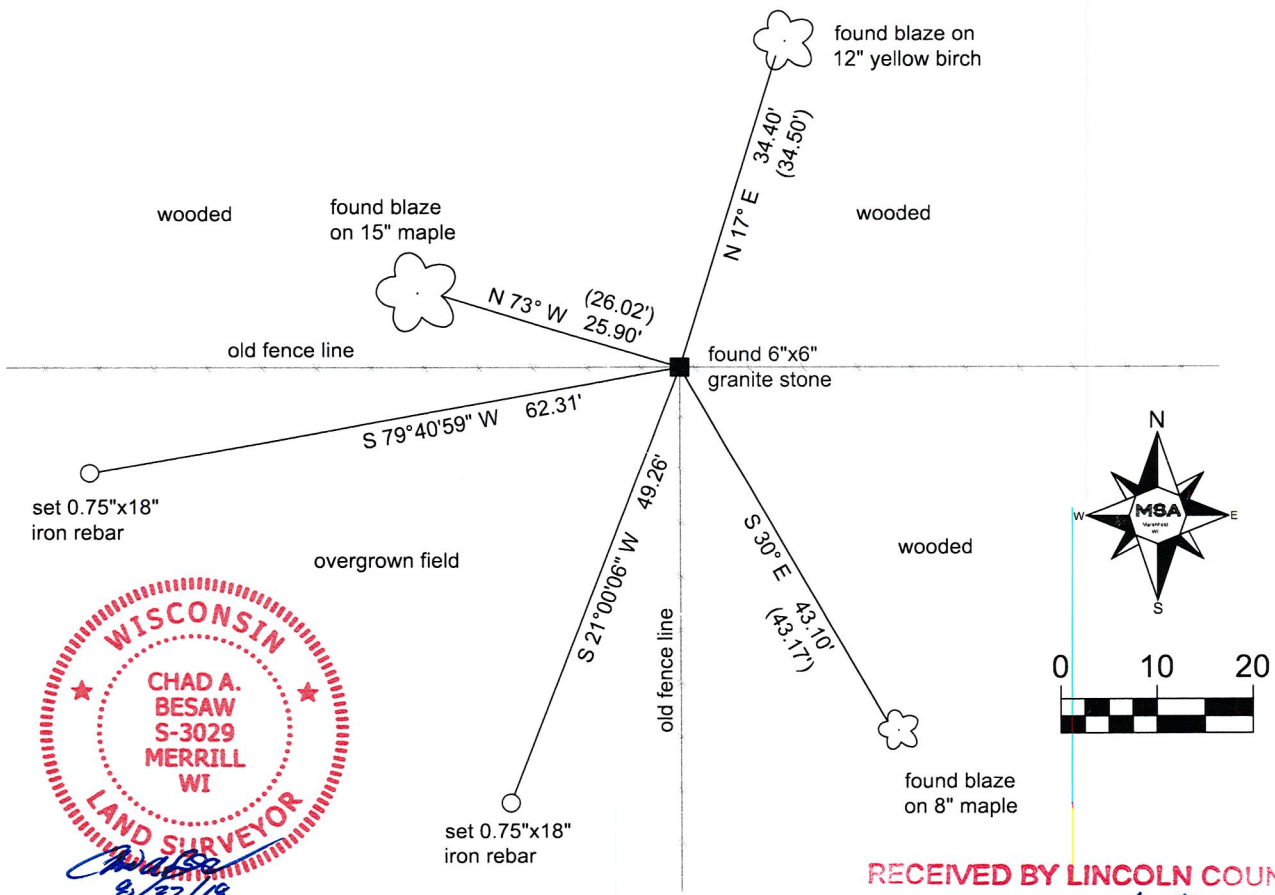
1980 Dec. - Sheridan D. Schwark - Found a 6"x6" red granite stone monument at a fence intersection, approximately 1' above grade. Straightened stone and set witness monuments. 10" Maple - N73W° 26.02', 7" Yellow Birch - N17°E 34.50', 5" Maple - S30°E, 43.17'

2003 March - David J. Goslin - Prepared section summary showing stone monument at corner location.

2006 March - Keith J. Walkowski - Prepared township summary for Town of Pine River remonumentation project showing a stone at corner location.

2018 June - Chad A. Besaw - Found 6"x6" red granite stone monument slightly tipped at mostly down fence intersection. Found Schwark's 1980 bearing tree ties, re-plumbed stone and mounded with rocks, checked/verified existing ties and set 2 additional iron rebar as ties. Witnessed as shown below.

(c)(d)(e) Plan view of corner with ties to at least 4 witness monuments. If in disagreement with previously established corner, show the distances between the two corners and also indicate the ties to the disputed corner.



(i) I, Chad A. Besaw, Professional Land Surveyor #S-3029, hereby certify that the corner location on this record was determined by me or under my direction and control and that this U.S. Public Land Survey Monument Record is correct and complete to the best of my knowledge and belief.

RECEIVED BY LINCOLN COUNTY  
 SURVEYOR THIS 6<sup>TH</sup> DAY  
 OF September 20 / 18  
*Tony Dahn*  
 COUNTY SURVEYOR

Index No.

9-11

*Chad A. Besaw*  
 Signature

9/27/2018  
 Date

CERTIFIED LAND CORNER RESTORATION

Index No. Q-11

State of Wisconsin }  
County of Lincoln } ss.

History of original corner establishment:

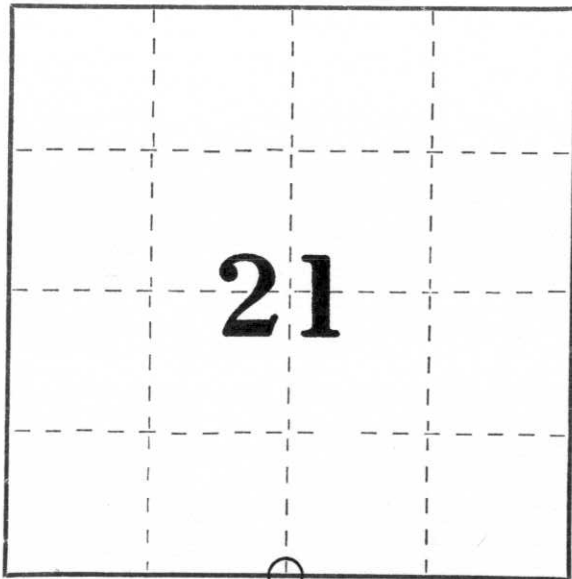
Wood post set by original government surveyor.

I, Sheridan D. Schwark, do hereby certify that on the 4th day of December, 1980, I found evidence of the South 1/4 corner of Section 21 Township 31, North, Range 8 East, Fourth, Principal Meridian, as described hereon; and that from this evidence I established a new monument and accessories as described hereon to perpetuate the original location of this corner.

Description of corner evidence found:

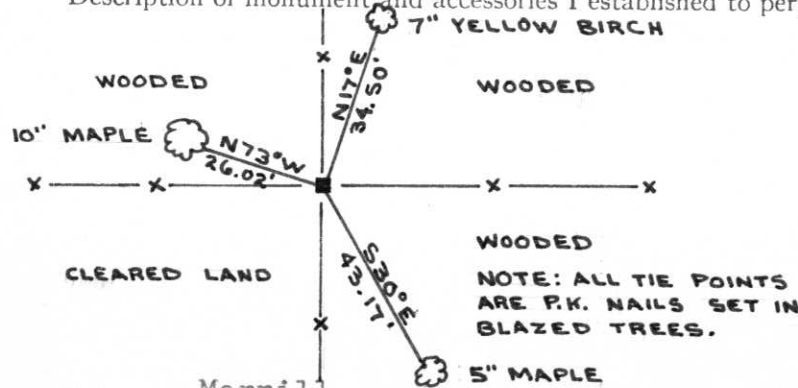
We found a 6" x 6" red granite stone monument at a fence intersection. The stone was approximately 1' above grade and was leaning somewhat northerly. We straightened the stone and set the witness monuments shown below.

Resident witnesses:



○ = Corner monument restored.

Description of monument and accessories I established to perpetuate the original location of this corner.



Dated at Merrill, Wis., this 12th day of December, 1980.

Signature Sheridan D. Schwark Title Registered Land Surveyor Registration No. S-1205  
(County Surveyor, Registered Land Surveyor, or other duly authorized official)

Office of Register of Deeds, County of \_\_\_\_\_, I hereby certify that the within instrument was filed in this office for record on the \_\_\_\_\_ day of \_\_\_\_\_, 19\_\_\_\_ at \_\_\_\_\_ o'clock \_\_\_\_\_ M.

(Register of Deeds)

By \_\_\_\_\_ Deputy