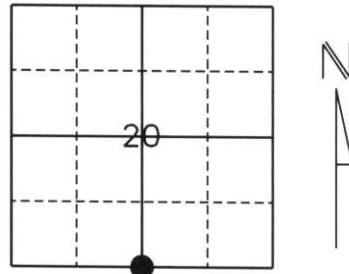


# U.S. PUBLIC LAND SURVEY MONUMENT RECORD

Note: This form is intended and designed to fulfill all requirements of Wisconsin Administrative Code, Chapter A-E 5.02, U.S. Public Land Survey Monument Record (3) (a) (b) (c) (d) (e) (f) (g) (h) (i). An additional sheet may be added if necessary to conform with said requirements.

(a) Corner location: Township 31 North  
 Range 8 East  
 Town/City/Village Pine River  
 County Lincoln



Section 20

(b) (f) (g) (h) Description of monument found at this corner and if it was accepted, state all evidence (material, testimonial, occupational, plats, records, other monuments) used as a basis for accepting. If not accepted or if nothing was found, state evidence used as a basis for establishing location. If reestablished through lost corner proportionate methods, indicate all monuments, distance and directions used to establish.

*History of original corner establishment:*  
 Original Survey was February, 1862 by A. G. and F. S. Ellis. Original corner was a wooden post with bearing trees:  
 14" Soft Maple N23°W, 5 lks.  
 10" Linn S29°W, 25 lks.

Corner was revisited by Sheridan Schwark on January 6th, 1981. He found a 6" x 6" Red Granite Monument tipped westerly, reset it and placed witness monuments:

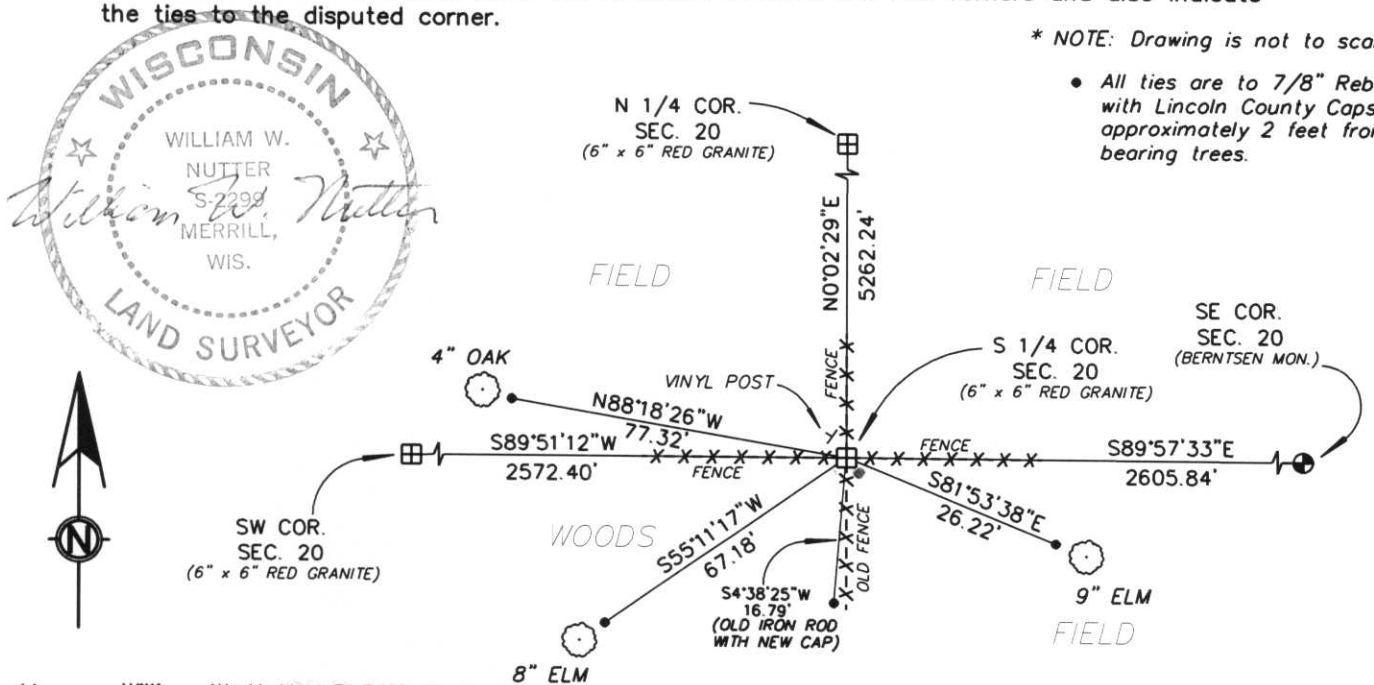
- 3/4" x 24" Iron Rod East, 10.94'
- 3/4" x 24" Iron Rod South, 16.79'
- PK Nail in a 6" Balsam S50°W, 75.29'

*Description of corner evidence found:*  
 We located a 6" x 6" Red Granite Monument tipped Southeasterly, we reset it using the remaining Iron Rod 16.79 feet to the South and hole by base of stone. We accepted this position and tied to 7/8" Rebar with Lincoln County Caps.

(c) (d) (e) Plan view of corner with ties to at least 4 witness monuments. If in disagreement with previously established corner, show the distances between the two corners and also indicate the ties to the disputed corner.

\* NOTE: Drawing is not to scale.

- All ties are to 7/8" Rebar with Lincoln County Caps approximately 2 feet from bearing trees.



(I) I, William W. Nutter RLS, S-2299  
 (type or print name) certify that the corner location on this record was determined by me or under my direction and control and that this U.S. Public Land Survey Monument Record is correct and complete to the best of my knowledge and belief.

William W. Nutter, RLS  
 Signature

3-10-2003  
 Date

Index No. Q-7

CERTIFIED LAND CORNER RESTORATION

Index No. Q-7

State of Wisconsin }  
County of Lincoln } ss.

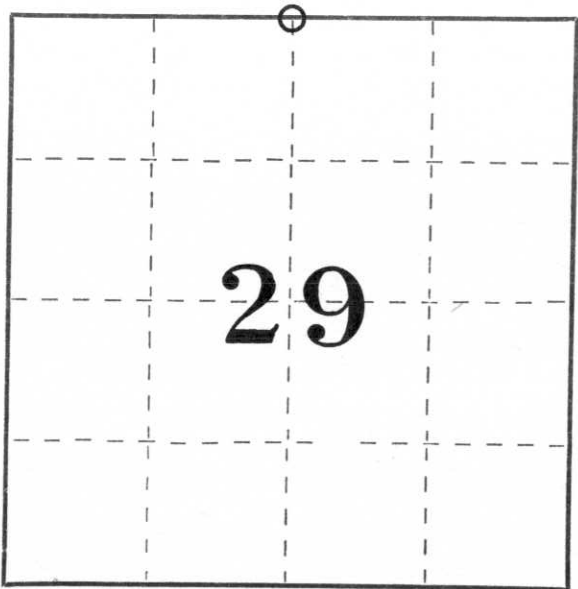
History of original corner establishment:  
Wood post set by original government surveyor

I Sheridan D. Schwark, do hereby certify that on the 6 th day of January, 1981, I found evidence of the North one-quarter corner of Section 29 Township 31, North, Range 8 East, Fourth, Principal Meridian, as described hereon; and that from this evidence I established a new monument and accessories as described hereon to perpetuate the original location of this corner.

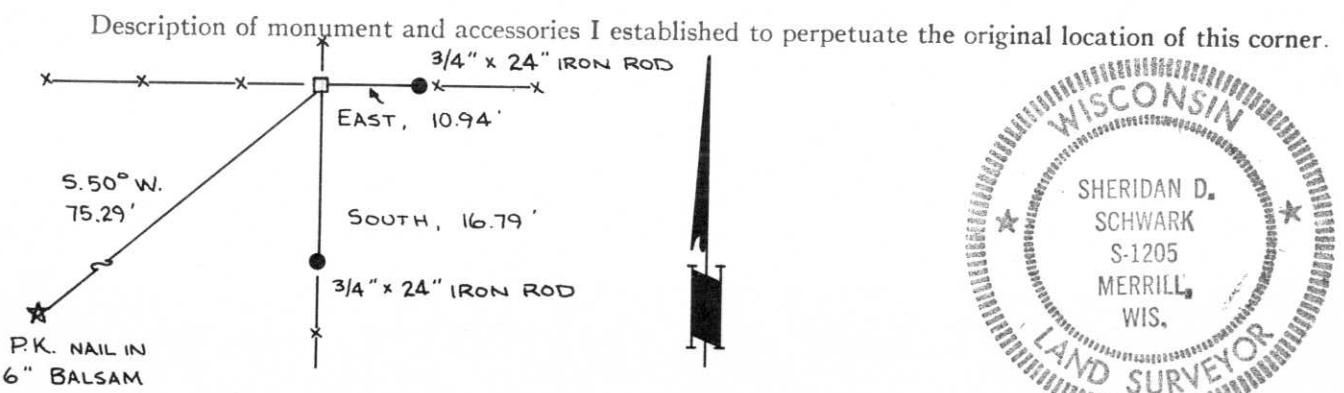
Description of corner evidence found:

We found a 6" x 6" red granite monument tipped westerly, we reset it and place the references shown below.

Resident witnesses:  
\_\_\_\_\_  
\_\_\_\_\_  
\_\_\_\_\_



○ = Corner monument restored.



Dated at Merrill, Wis., this 13 th day of January, 1981

Signature Sheridan D. Schwark Title Registered Land Surveyor Registration No. S-1205  
(County Surveyor, Registered Land Surveyor, or other duly authorized official)

Office of Register of Deeds, County of \_\_\_\_\_, I hereby certify that the within instrument was filed in this office for record on the \_\_\_\_\_ day of \_\_\_\_\_, 19\_\_\_\_ at \_\_\_\_\_ o'clock \_\_\_\_\_ M.

\_\_\_\_\_  
(Register of Deeds)

By \_\_\_\_\_ Deputy