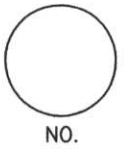


LINCOLN COUNTY U.S. PUBLIC LAND SURVEY MONUMENT LOCATION RECORD

CORNER NUMBER 233185
 SECTION 23
 TOWNSHIP 31 NORTH
 RANGE 8 EAST
 PINE RIVER
 CITY, VILLAGE, TOWN



LANDMARK BENCHMARK
 CORNER IDENTITY: EAST 1/4 CORNER
 FOUND SET
 RESET
 RE-TIED

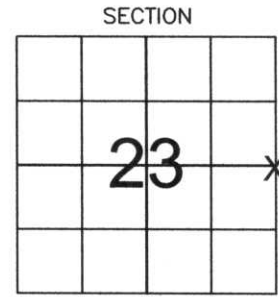
LINCOLN COUNTY COORDINATE: N: 113584.51
 E: 454980.92

ELEVATION-(FEET): _____ DATUM: _____

WEATHER: SNOWING

DATE OF SURVEY: 12-01-05 TEMPERATURE: 20 °F

SURVEY PARTY: NATHAN WINCENTSEN, KEITH WALKOWSKI



LOCATION (Indicated By X)



BASIS FOR MONUMENT LOCATION:

(DESCRIBE METHOD OF SURVEY AND CORNER AUTHENTICATION)

SEARCHED FOR EAST 1/4 CORNER, FOUND GRANITE STONE AT THE END OF A NORTH-SOUTH FENCE LINE. ACCEPTED STONE AS CORNER AND PERPETUATED AS SHOWN BELOW.

FIELD BOOK NO. PINE RIVER PAGE NO. 36
 COMPANY RIVERSIDE LAND SURVEYING LLC

CERTIFIED CORRECT:

Keith J. Walkowski
KEITH J. WALKOWSKI
 Registered Land Surveyor
 DATE: Jan. 3RD, 2006

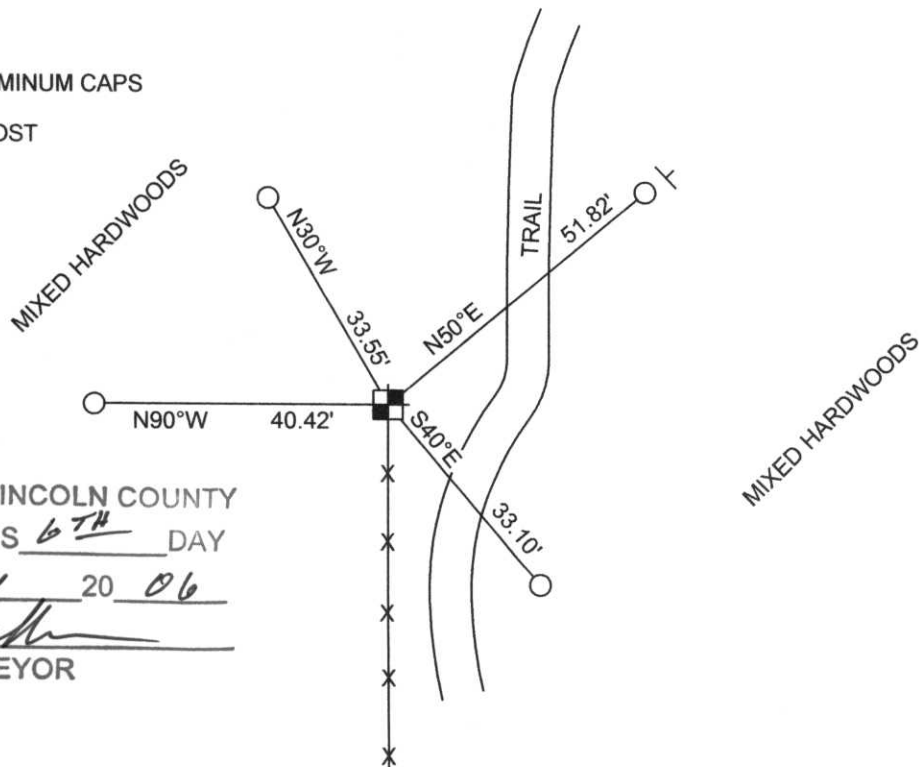
TIE SKETCH:

SHOW MINIMUM OF FOUR (4) HORIZONTAL TIE DISTANCES TO FIXED WITNESS MONUMENTS. DESCRIBE ALL MONUMENTS FOUND OR SET. CORRECT ALL DISTANCES SHOWN TO STANDARD TEMPERATURE OF 68° F.

- FOUND GRANITE STONE
- SET 3/4" REBAR WITH ALUMINUM CAPS
- VINYL SURVEY MARKER POST

NOTE

- ALL BEARINGS ARE FROM A HAND HELD MAGNETIC COMPASS
- THIS DRAWING IS NOT TO SCALE



RECEIVED BY LINCOLN COUNTY SURVEYOR THIS 6TH DAY OF January 20 06
Tony Dade
 COUNTY SURVEYOR

SM
UR
VE
EY

233185

