

# Attachment to Tie Sheet O-17, T31N, R8E

I visited corner on 08/13/2013; Book 6, pg. 54. I found tipped Berntsen Aluminum Monument at the corner location. The found Aluminum Monument broke while attempting to re-plumb. I set a new **Berntsen Aluminum Monument** at the position of the existing broken base. I set new reference ties (see notes)

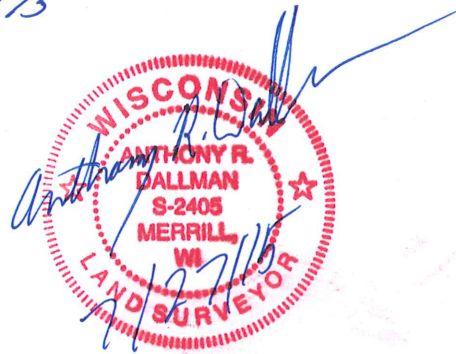
## NOTES

- A current tie sheet was completed by C. Fieri, PLS-2954, dated 11/20/2014 that does not show certain reference ties set by me on 08/13/2013:
  - S 88° E, 83.45'; 7/8" Rebar w/ Aluminum Cap, N 36° E, +/-9' from power pole.
  - N 08° W, 36.25'; 7/8" Rebar w/ Aluminum Cap, +/-9.5' from edge of asphalt.
  - S 07° W, 34.82'; 7/8" Rebar w/ Aluminum Cap, +/-8' from edge of asphalt.

*Anthony R. Dallman 7/27/15*

Anthony R. Dallman, PLS-2405

Lincoln County Surveyor



# LINCOLN COUNTY U.S. PUBLIC LAND SURVEY MONUMENT LOCATION RECORD

SECTION 22  
TOWNSHIP 31 N  
RANGE 8 E

**O-17**  
NO.

LANDMARK       BENCHMARK  
CORNER IDENTITY: E1/4 CORNER SEC. 22 (BERNTSEN MONUMENT)  
FOUND  SET   
RE-SET  RE-TIED

LINCOLN COUNTY COORDINATE: N: 113575.3840  
E: 449769.4910

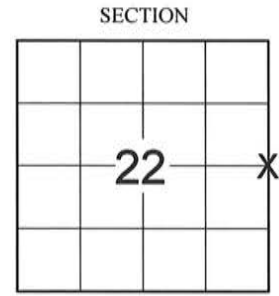
ELEVATION-(FEET): \_\_\_\_\_ DATUM: \_\_\_\_\_

WEATHER: CLEAR AND SUNNY

DATE OF SURVEY: 9/12/2014 TEMPERATURE: 65 °F

SURVEY PARTY: KEITH WALKOWSKI AND CHRIS FIERI

PINE RIVER  
CITY, VILLAGE, TOWN



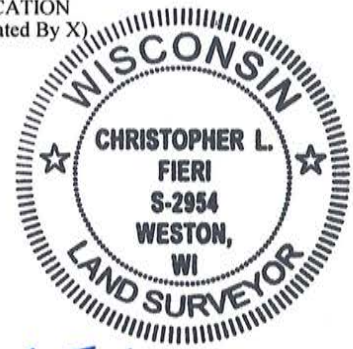
LOCATION (Indicated By X)

### BASIS FOR MONUMENT LOCATION:

(DESCRIBE METHOD OF SURVEY AND CORNER AUTHENTICATION)

7/17/1981 - E. Abendroth excavated in the centerline of S.T.H. "64" at location and depth described by Ed Utecht former Town Chairman. He found no evidence of the corner. Set the corner by proportionate measurement and set out witness ties.

9/15/2014 - I visited the corner location prior to the resurfacing of Highway "64" and recovered the Berntsen Monument of record. Also recovered two (2) witness monuments from the previous corner restoration form. Distances checked well. Set four (4) Berntsen SSSR-130 witness monuments and returned after construction to confirm that the monument at the corner position had not been disturbed.



CERTIFIED CORRECT:

*Christopher L. Fieri*  
CHRISTOPHER L. FIERI S-2954  
Registered Land Surveyor  
DATE: 11-20-2014

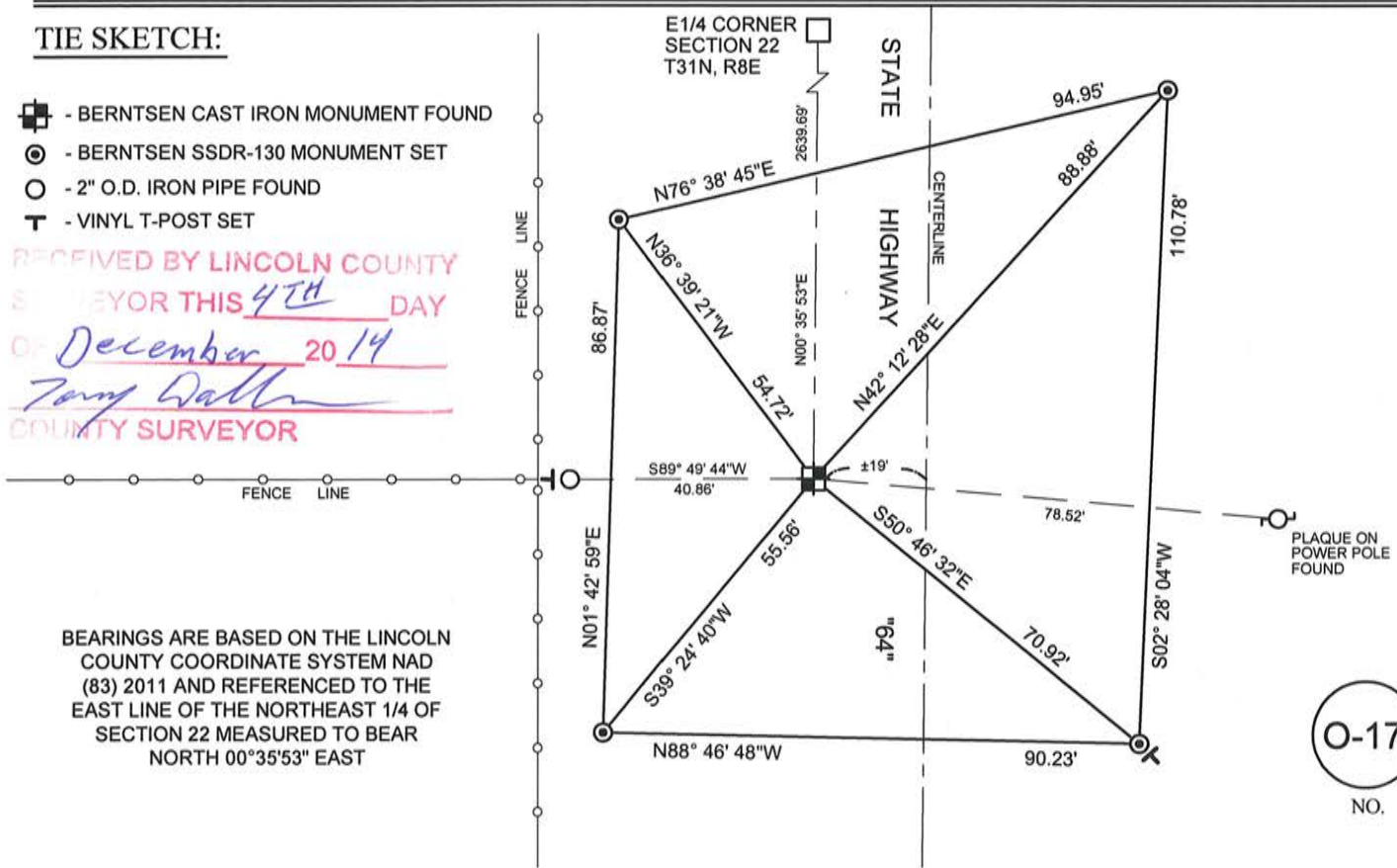
FIELD BOOK NO. 41 PAGE NO. 16

COMPANY RIVERSIDE LAND SURVEYING LLC

### TIE SKETCH:

- BERNTSEN CAST IRON MONUMENT FOUND
- BERNTSEN SSSR-130 MONUMENT SET
- 2" O.D. IRON PIPE FOUND
- VINYL T-POST SET

RECEIVED BY LINCOLN COUNTY  
SURVEYOR THIS 4TH DAY  
OF December 2014  
*Tony Datta*  
COUNTY SURVEYOR



BEARINGS ARE BASED ON THE LINCOLN COUNTY COORDINATE SYSTEM NAD (83) 2011 AND REFERENCED TO THE EAST LINE OF THE NORTHEAST 1/4 OF SECTION 22 MEASURED TO BEAR NORTH 00°35'53" EAST

**O-17**  
NO.

CERTIFIED LAND CORNER RESTORATION

Index No. 0-17

State of Wisconsin }  
 County of Lincoln } ss.

History of original corner establishment:

Original corner was wood post. Granite stone was placed during Lincoln County remonumentation.

I Edwin R. Abendroth, do hereby certify that on the 17th day of July, 1981, I found evidence of the E1/4 corner of Section 22 Township 31, North, Range 8 East, Fourth, Principal Meridian, as described hereon; and that from this evidence I established a new monument and accessories as described hereon to perpetuate the original location of this corner.

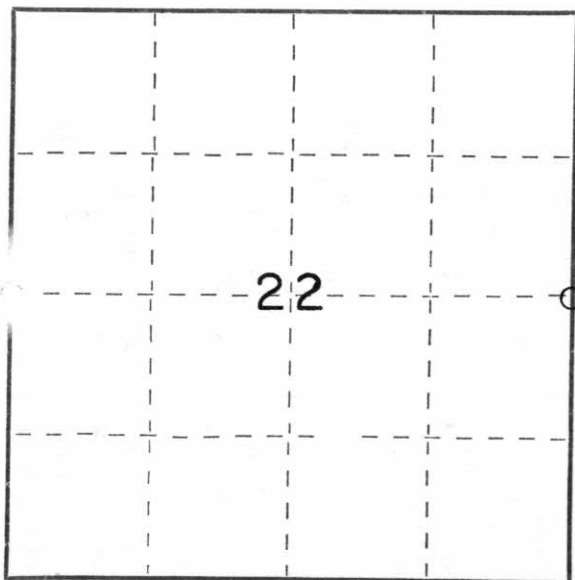
Description of corner evidence found:

After excavating in centerline of S.T.H. "64" at location and depth described by Ed Utecht former Town Chairman, we discovered no evidence. Set corner by single proportionate measurement.

Resident witnesses:

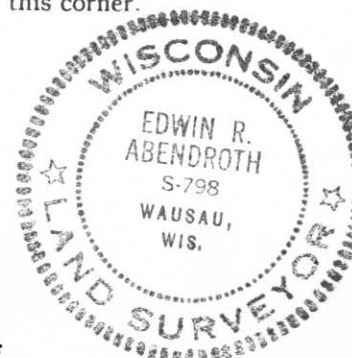
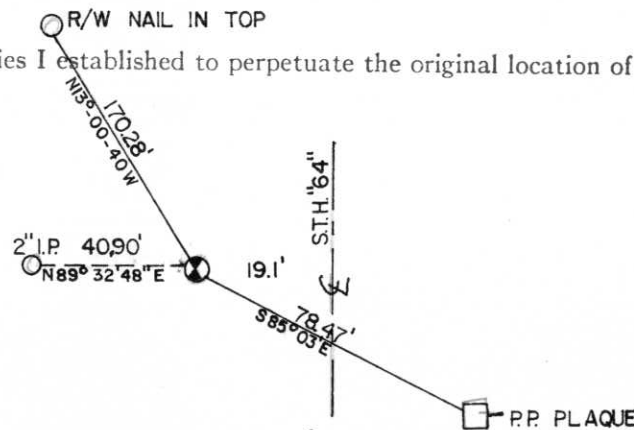
Ed Utecht

Description of monument and accessories I established to perpetuate the original location of this corner.



○ = Corner monument restored.

BEARINGS REFERENCED TO  
 EAST LINE SE 1/4 SEC. 22  
 ASSUMED BEARINGS NORTH



Dated at Wausau Wis., Wis., this 24th day of July, 1981.

Signature Edwin R. Abendroth Reg. Land Surveyor Registration No. S-798  
 (County Surveyor, Registered Land Surveyor, or other duly authorized official)

Office of Register of Deeds, County of \_\_\_\_\_, I hereby certify that the within instrument was filed in this office for record on the \_\_\_\_\_ day of \_\_\_\_\_, 19\_\_\_\_ at \_\_\_\_\_ o'clock \_\_\_\_\_ M.

(Register of Deeds)

By \_\_\_\_\_ Deputy