

# U.S. PUBLIC LAND SURVEY MONUMENT RECORD

NOTE: THIS FORM IS INTENDED AND DESIGNED TO FULFILL ALL REQUIREMENTS OF WISCONSIN ADMINISTRATIVE CODE, CHAPTER A-E 7.08, U.S. PUBLIC LAND SURVEY MONUMENT RECORD (3)(a)(b)(c)(d)(e)(f)(g)(h)(i). ADDITIONAL SHEETS MAY BE NECESSARY TO CONFORM TO SAID REQUIREMENTS.

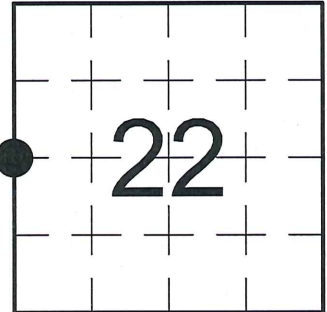
T 31 N, R 8 E

**(a) CORNER LOCATION:**

WEST QUARTER CORNER, SECTION 22  
 TOWNSHIP 31 NORTH  
 RANGE 8 EAST  
 TOWN OF PINE RIVER  
 LINCOLN COUNTY  
 WISCONSIN

**(b) HISTORY OF ORIGINAL CORNER:**

ORIGINAL SURVEYOR: A.G. & F.S. Ellis, Set post  
 COMMENCING DATE: February 13, 1852  
 COMPLETION DATE: February 25, 1852  
 ORIGINAL BEARING TREES:  
 12" Birch; N 9° E; 13 links  
 10" Birch; N 34° W; 31 links



**(f)(g)(h) DESCRIPTION OF MONUMENT FOUND AT THIS CORNER AND IF IT WAS ACCEPTED. STATE ALL EVIDENCE (MATERIAL, TESTIMONIAL, OCCUPATIONAL, PLATS, RECORDS, OTHER MONUMENTS) USED AS A BASIS FOR ESTABLISHING LOCATION. IF RE-ESTABLISHING THROUGH LOST CORNER PROPORTIONATE METHODS, INDICATE ALL MONUMENTS, DISTANCES, AND DIRECTIONS USED TO ESTABLISH. INDICATE TYPE OF MONUMENTS FOUND OR SET.**

12/12/1980 - S. Schwark, RLS-1205, found a 6" x 6" red Granite Monument heaved up about 18" and leaning southerly. He reset the Stone in its location leaving the top 6" above grade. He made reference ties to perpetuate the corner location.

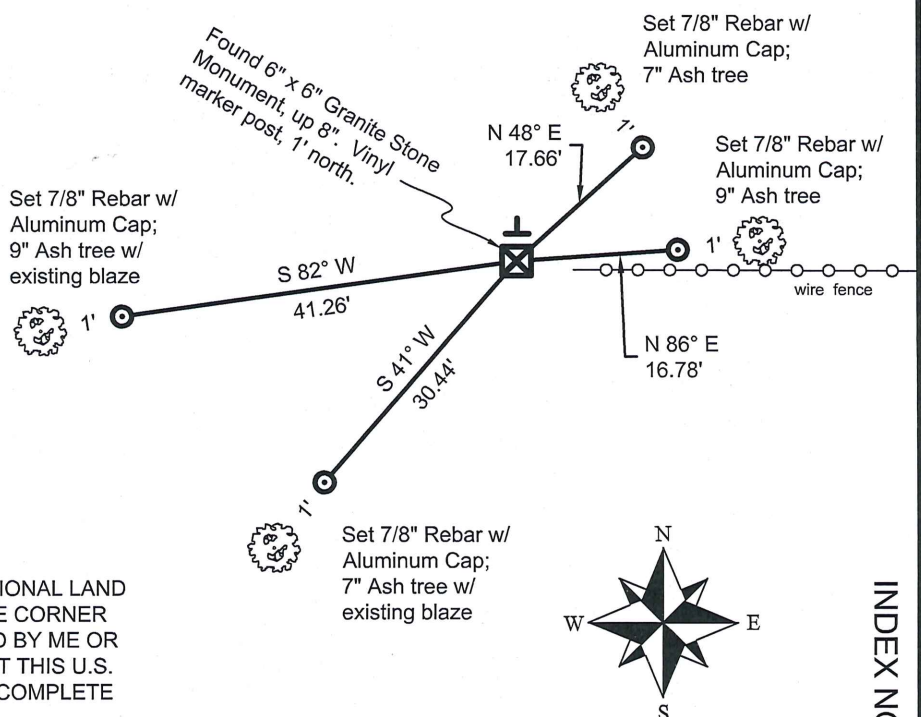
03/07/2006 - K. Walkowski, PLS-2717, found the Granite Stone during a remonumentation project for Lincoln County, shown on Lincoln County Survey Office Map No. L423.

10/09/2014 - I, Anthony R. Dallman, PLS-2405, found the 6" x 6" Granite Stone Monument, ±8" above the ground surface and leaning northerly. I plumbed the Stone and verified its location with existing reference ties. I set new reference ties to further perpetuate the corner location, as shown in the sketch below.

**(c)(d)(e) PLAN VIEW OF THE CORNER WITH TIES TO AT LEAST FOUR WITNESSES. IF IN DISAGREEMENT WITH PREVIOUSLY ESTABLISHED CORNER, SHOW THE DISTANCES BETWEEN THE TWO CORNERS AND ALSO THE TIES TO THE DISPUTED CORNER.**



- Bearings by hand-held compass.  
 - Distances by steel tape.



I, ANTHONY R. DALLMAN, WISCONSIN PROFESSIONAL LAND SURVEYOR, S-2405, HEREBY CERTIFY THAT THE CORNER LOCATION ON THIS RECORD WAS REFERENCED BY ME OR UNDER MY DIRECTION AND CONTROL AND THAT THIS U.S. PUBLIC LAND SURVEY MONUMENT RECORD IS COMPLETE TO THE BEST OF MY KNOWLEDGE AND BELIEF.

*Anthony R. Dallman* 8/04/15  
 ANTHONY R. DALLMAN, PLS S-2405

CERTIFIED LAND CORNER RESTORATION

Index No. 0-13

State of Wisconsin }  
 County of Lincoln } ss.

History of original corner establishment:

Wood post set by original government surveyor.

I, Sheridan D. Schwark, do hereby certify that on the 4th day of December, 1980, I found evidence of the West 1/4 corner of Section 22 Township 31, North, Range 8 East, Fourth, Principal Meridian, as described hereon; and that from this evidence I established a new monument and accessories as described hereon to perpetuate the original location of this corner.

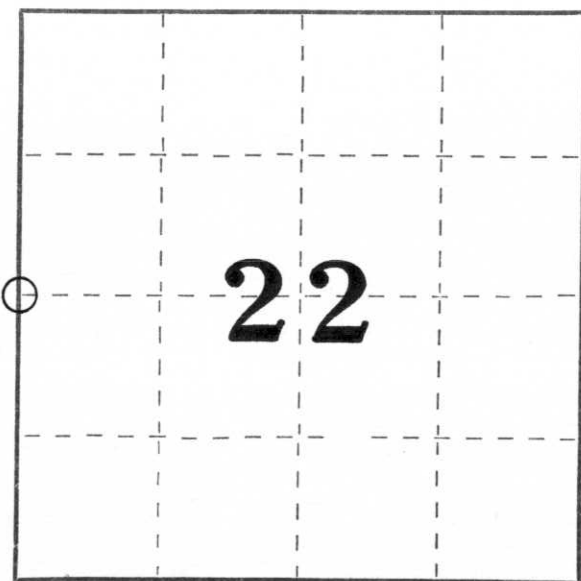
Description of corner evidence found:

We found a 6" x 6" x 28" red granite stone monument heaved up about 18" and leaning southwesterly. We reset the stone in its location leaving the top 6" above grade.

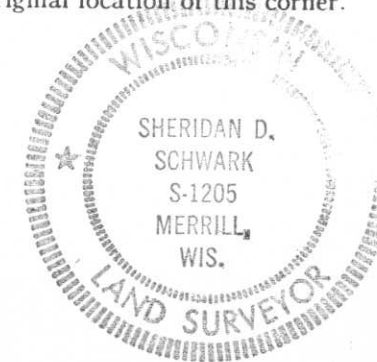
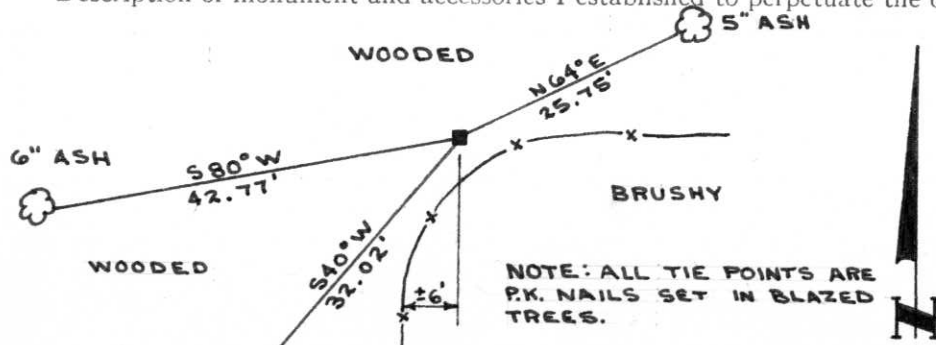
Resident witnesses:

.....  
 .....  
 .....

Description of monument and accessories I established to perpetuate the original location of this corner.



○ = Corner monument restored.



Dated at Merrill, Wis., this 12th day of December, 1980.

Signature Sheridan D. Schwark Title Registered Land Surveyor Registration No. S-1205  
 (County Surveyor, Registered Land Surveyor, or other duly authorized official)

Office of Register of Deeds, County of \_\_\_\_\_, I hereby certify that the within instrument was filed in this office for record on the \_\_\_\_\_ day of \_\_\_\_\_, 19\_\_\_\_ at \_\_\_\_\_ o'clock \_\_\_\_\_ M.

(Register of Deeds)

By \_\_\_\_\_ Deputy