

U.S. PUBLIC LAND SURVEY MONUMENT RECORD

NOTE: THIS FORM IS INTENDED AND DESIGNED TO FULFILL ALL REQUIREMENTS OF WISCONSIN ADMINISTRATIVE CODE, CHAPTER A-E 7.08, U.S. PUBLIC LAND SURVEY MONUMENT RECORD (3)(a)(b)(c)(d)(e)(f)(g)(h)(i). ADDITIONAL SHEETS MAY BE NECESSARY TO CONFORM TO SAID REQUIREMENTS.

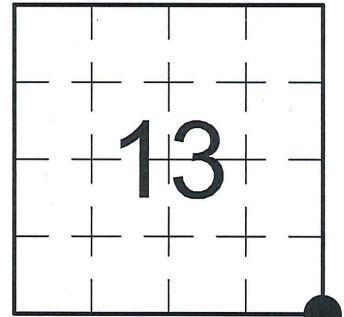
T 31 N, R 8 E

(a) CORNER LOCATION:

SOUTHEAST CORNER, SECTION 13
 TOWNSHIP 31 NORTH
 RANGE 8 EAST
 TOWN OF PINE RIVER
 LINCOLN COUNTY
 WISCONSIN

(b) HISTORY OF ORIGINAL CORNER:

ORIGINAL SURVEYOR: James M. Marsh, set post
 COMMENCING DATE: July 8, 1851
 COMPLETION DATE: July 28, 1851
 ORIGINAL BEARING TREES:
 24" Elm; S 24° E; 25 links
 18" Birch; S 25° W; 40 links
 8" Birch; N 40° W; 10 links
 10" Sugar Maple; N 20° E; 18 links



(f)(g)(h) DESCRIPTION OF MONUMENT FOUND AT THIS CORNER AND IF IT WAS ACCEPTED. STATE ALL EVIDENCE (MATERIAL, TESTIMONIAL, OCCUPATIONAL, PLATS, RECORDS, OTHER MONUMENTS) USED AS A BASIS FOR ESTABLISHING LOCATION. IF RE-ESTABLISHING THROUGH LOST CORNER PROPORTIONATE METHODS, INDICATE ALL MONUMENTS, DISTANCES, AND DIRECTIONS USED TO ESTABLISH. INDICATE TYPE OF MONUMENTS FOUND OR SET.

02/14/1975 - W. Kelly, RLS-1098, found a 6" x 6" Granite Stone Monument lying on its side due to frost action. Notes that lines are blazed E-W-N-S of corner location. He excavated the Stone and set a Berntsen Aluminum Monument flush with the ground as the corner and reset the Stone as a witness to the corner, adjacent to the new monument. He made reference ties to perpetuate the corner location.

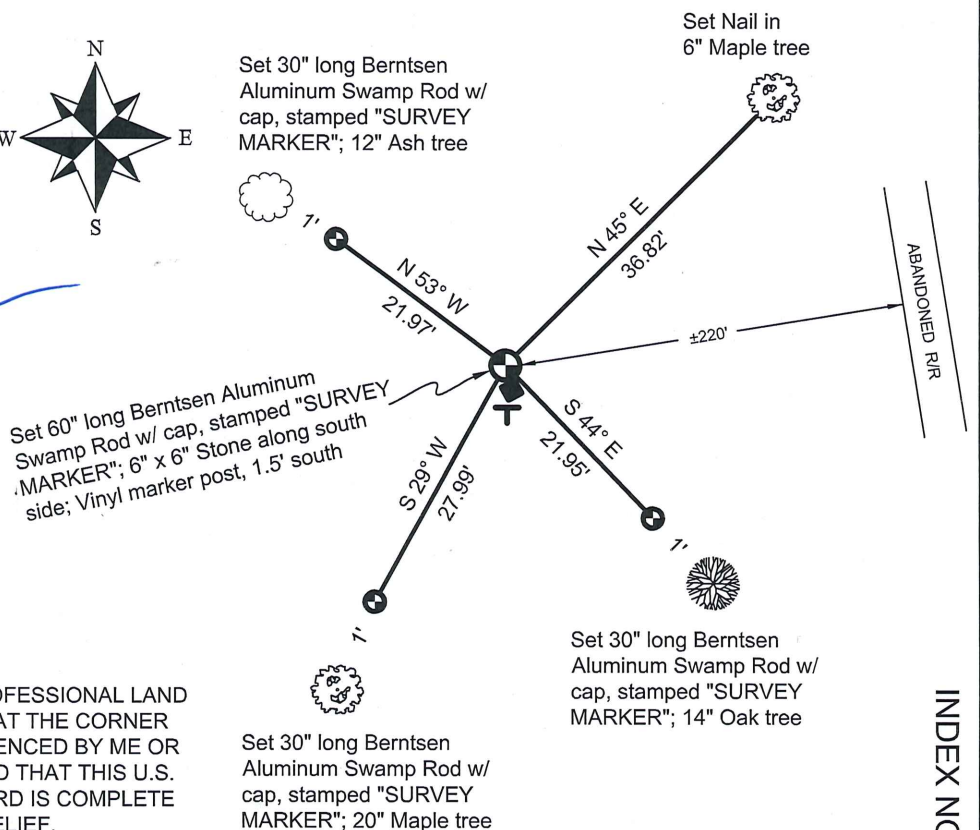
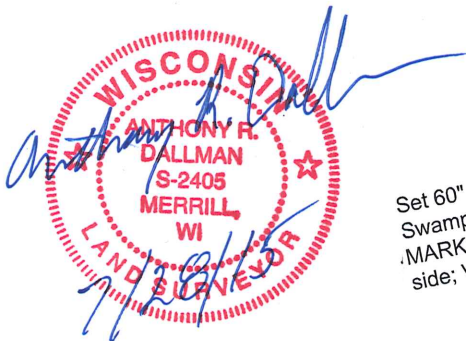
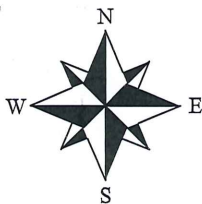
03/07/2006 - K. Walkowski, PLS-2717, found the Berntsen Monument during a remonumentation project for Lincoln County, shown on Lincoln County Surveyor's Office Map No. L423.

11/30/2012 - I, Anthony R. Dallman, PLS-2405, found both the Berntsen Monument and the 6" x 6" Granite Stone Monuments tipped out of plumb. I replaced the tipped Berntsen with a 60" long Berntsen Aluminum Swamp Rod w/ Aluminum Cap stamped "SURVEY MARKER". I replumbed the Granite Stone on the south side of the Swamp Rod and made new reference ties to further perpetuate the corner location, as shown in the sketch below.

(c)(d)(e) PLAN VIEW OF THE CORNER WITH TIES TO AT LEAST FOUR WITNESSES. IF IN DISAGREEMENT WITH PREVIOUSLY ESTABLISHED CORNER, SHOW THE DISTANCES BETWEEN THE TWO CORNERS AND ALSO THE TIES TO THE DISPUTED CORNER.



- Bearings by hand-held compass.
 - Distances by steel tape.



I, ANTHONY R. DALLMAN, WISCONSIN PROFESSIONAL LAND SURVEYOR, S-2405, HEREBY CERTIFY THAT THE CORNER LOCATION ON THIS RECORD WAS REFERENCED BY ME OR UNDER MY DIRECTION AND CONTROL AND THAT THIS U.S. PUBLIC LAND SURVEY MONUMENT RECORD IS COMPLETE TO THE BEST OF MY KNOWLEDGE AND BELIEF.

Anthony R. Dallman 7/28/15
 ANTHONY R. DALLMAN, PLS S-2405

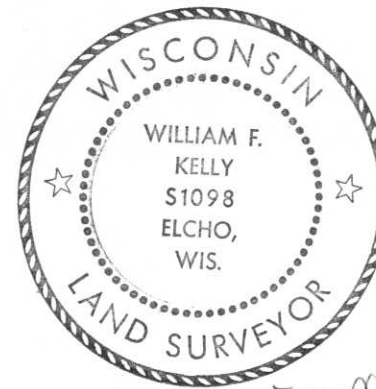
INDEX NO. M-25

CERTIFIED LAND CORNER RESTORATION

Index No. M-25

State of Wisconsin }
County of LINCOLN } ss.

History of original corner establishment:



William F. Kelly

I WILLIAM F KELLY, do hereby certify that on the 14TH day of FEBRUARY, 1975, I found evidence of the SECTION corner of SECTIONS 13, 18, 24, & 19 Township 31, North, Range 8 & 9 EAST, Fourth, Principal Meridian, as described hereon; and that from this evidence I established a new monument and accessories as described hereon to perpetuate the original location of this corner.

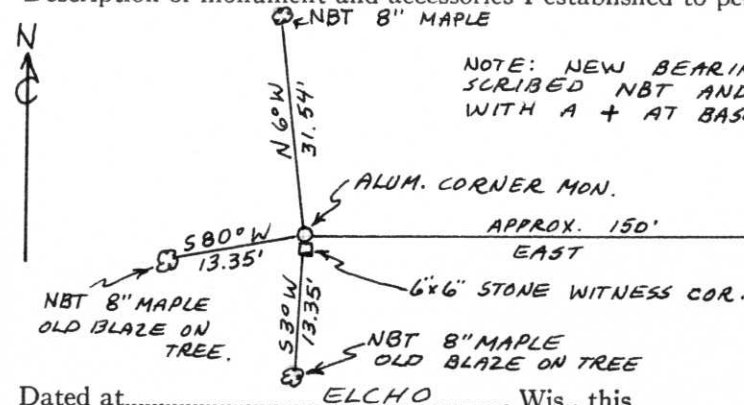
Description of corner evidence found:

LOCATED 6x6 GRANITE STONE LYING ON IT'S SIDE - DUE TO FROST ACTION. STONE WAS SET IN THE 1920S. LINES BLAZED E-W-N-S OF CORNER LOCATION.

Resident witnesses:

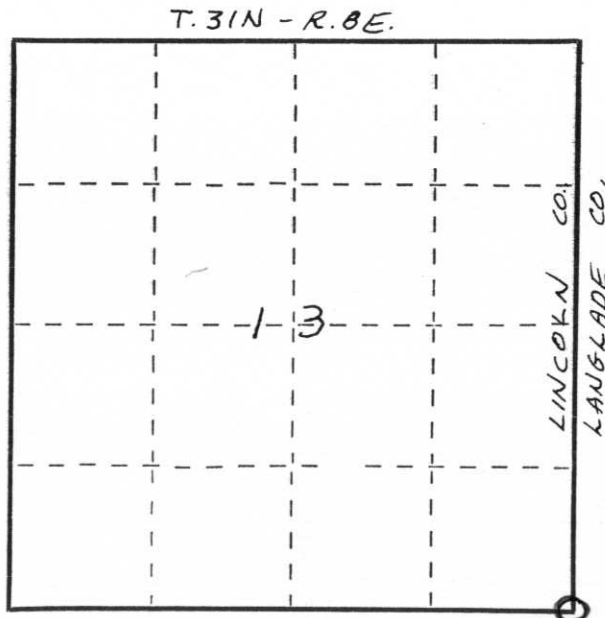
FREDRICK OHLMANN

Description of monument and accessories I established to perpetuate the original location of this corner.



EXCAVATED STONE AND SET A NEW ALUMINUM MON. FLUSH WITH THE GROUND AS CORNER. RESET THE STONE AS A WITNESS TO THE CORNER, ADJACENT TO THE NEW MONUMENT.

THIS CORNER IS IN A WOODED AREA. SOIL IS HEAVY CLAY. WATER TABLE IS WITHIN 2 FT. OF GROUND SURFACE.



Dated at ELCHO, Wis., this 14TH day of FEBRUARY, 1975.

Signature William F. Kelly Title REGISTERED LAND SURVEYOR Registration No. S. 1098
(County Surveyor, Registered Land Surveyor, or other duly authorized official)

Office of Register of Deeds, County of _____, I hereby certify that the within instrument was filed in this office for record on the _____ day of _____, 19____ at _____ o'clock _____ M.

(Register of Deeds)

By _____ Deputy

○ = Corner monument restored.