

U.S. PUBLIC LAND SURVEY MONUMENT RECORD

NOTE: THIS FORM IS INTENDED AND DESIGNED TO FULFILL ALL REQUIREMENTS OF WISCONSIN ADMINISTRATIVE CODE, CHAPTER A-E 7.08, U.S. PUBLIC LAND SURVEY MONUMENT RECORD (3)(a)(b)(c)(d)(e)(f)(g)(h)(i). ADDITIONAL SHEETS MAY BE NECESSARY TO CONFORM TO SAID REQUIREMENTS.

T 31 N, R 8 E

(a) CORNER LOCATION:

NORTH QUARTER CORNER, SECTION 24
 TOWNSHIP 31 NORTH
 RANGE 8 EAST
 TOWN OF PINE RIVER
 LINCOLN COUNTY
 WISCONSIN

(b) HISTORY OF ORIGINAL CORNER:

ORIGINAL SURVEYOR: A.G. & F.S. Ellis, Set post
 COMMENCING DATE: February 13, 1852
 COMPLETION DATE: February 25, 1852
 ORIGINAL BEARING TREES:
 10" Tamarack; S 57° W; 25 links
 7" Fir; N 51° E; 23 links



(f)(g)(h) DESCRIPTION OF MONUMENT FOUND AT THIS CORNER AND IF IT WAS ACCEPTED. STATE ALL EVIDENCE (MATERIAL, TESTIMONIAL, OCCUPATIONAL, PLATS, RECORDS, OTHER MONUMENTS) USED AS A BASIS FOR ESTABLISHING LOCATION. IF RE-ESTABLISHING THROUGH LOST CORNER PROPORTIONATE METHODS, INDICATE ALL MONUMENTS, DISTANCES, AND DIRECTIONS USED TO ESTABLISH. INDICATE TYPE OF MONUMENTS FOUND OR SET.

07/30/1979 - A. Drum, RLS-1456, after a long search found a 6" x 6" red Granite Stone Monument buried in mud and lying on its side. It fit the intersection of an old blazed trail from the north and from the east. He reset the Stone at its base with its top 0.9' above ground level. They drove wood stakes along the Stone to hold it tighter in very wet ground. When digging, they discovered a rotten Cedar stake, pointed, with dimensions 1.5"x1.5"x12". He set a metal spike on the north side of the Stone and made reference ties to perpetuate the corner location.

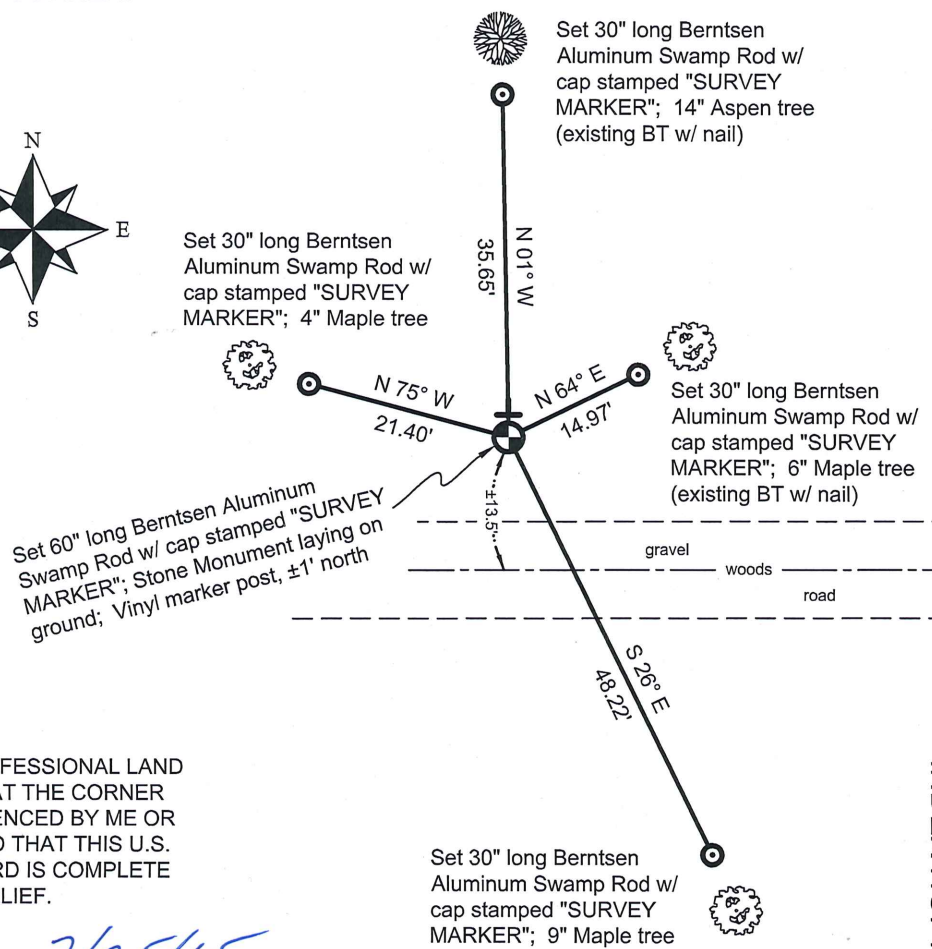
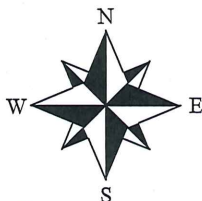
03/07/2006 - K. Walkowski, PLS-2717, found a Granite Stone Monument during a remonumentation project for Lincoln County, shown on Lincoln County Surveyor's Office Map No. L423.

12/18/2012 - I, Anthony R. Dallman, PLS-2405, found the 6" x 6" Granite Stone Monument tipped westerly at the corner location. I replaced the Stone with 60" Berntsen Aluminum Swamp Rod with Aluminum Cap stamped "SURVEY MARKER", using the existing northerly and northeasterly 1979 reference ties. I laid the Stone flat on the ground next to the Berntsen Swamp Rod and set new reference ties to further perpetuate the corner location.

(c)(d)(e) PLAN VIEW OF THE CORNER WITH TIES TO AT LEAST FOUR WITNESSES. IF IN DISAGREEMENT WITH PREVIOUSLY ESTABLISHED CORNER, SHOW THE DISTANCES BETWEEN THE TWO CORNERS AND ALSO THE TIES TO THE DISPUTED CORNER.



- Bearings by hand-held compass.
 - Distances by steel tape.



I, ANTHONY R. DALLMAN, WISCONSIN PROFESSIONAL LAND SURVEYOR, S-2405, HEREBY CERTIFY THAT THE CORNER LOCATION ON THIS RECORD WAS REFERENCED BY ME OR UNDER MY DIRECTION AND CONTROL AND THAT THIS U.S. PUBLIC LAND SURVEY MONUMENT RECORD IS COMPLETE TO THE BEST OF MY KNOWLEDGE AND BELIEF.

Anthony R. Dallman 7/25/15
 ANTHONY R. DALLMAN, PLS S-2405

INDEX NO. M-23

CERTIFIED LAND CORNER RESTORATION

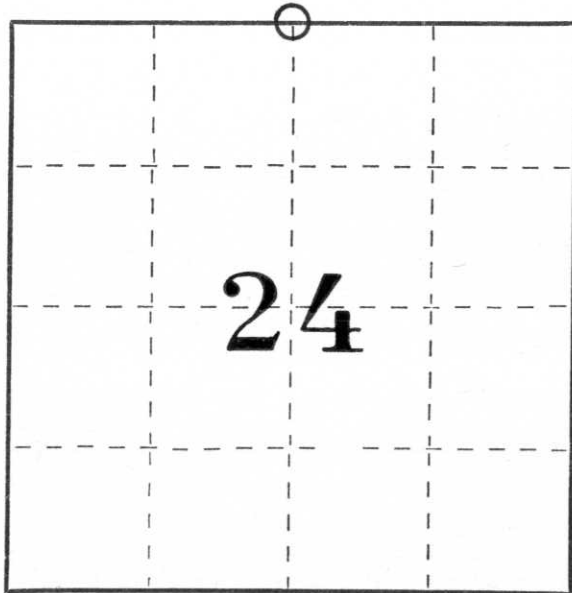
Index No. M-23

State of Wisconsin }
County of Lincoln } ss.

I Alan C. Drum, do hereby certify that on the 2nd day of July, 1979, I found evidence of the north one-quarter corner of Section 24 Township 31, North, Range 8 East, Fourth, Principal Meridian, as described hereon; and that from this evidence I established a new monument and accessories as described hereon to perpetuate the original location of this corner.

Resident witnesses:

.....
.....
.....



○ = Corner monument restored.

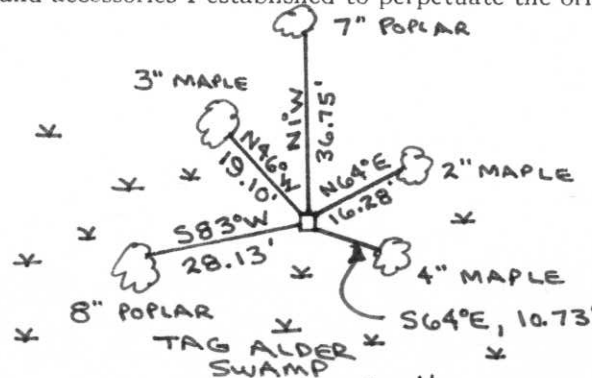
History of original corner establishment:

Date: July 1852
Surveyor: A.G. & F.S. Ellis
Monument: Wood Post
Witnesses: 10" Tamarack S57W 25 links
7" Fir N51E 23 links

Description of corner evidence found:

After a long search we found a 6x6x30 inch red granite monument buried in mud and lying on its side. It fit the intersection of an old blazed trail from the North and from the East. We reset the stone at its base and it now stands with its top at 0.9 feet above ground level. We also drove wooden stakes along the stone to hold it tighter in the very wet ground. When digging a hole in which to set the stone we found a rotten Cedar stake, pointed, with dimensions 1 1/2 x 1 1/2 x 12 inches.

Description of monument and accessories I established to perpetuate the original location of this corner.



NOTE: ALL BEARING TREES WERE BLAZED AND HAVE SAKES SET IN BLAZES
□ = 6" x 6" GRANITE MONUMENT FOUND. (METAL SPIKE SET ON N. SIDE OF STONE)

Dated at Wausau, Wis., this 30th day of July, 1979.

Signature Alan C. Drum Title Registered Land Surveyor Registration No. S-1456
(County Surveyor, Registered Land Surveyor, or other duly authorized official)

Office of Register of Deeds, County of _____, I hereby certify that the within instrument was filed in this office for record on the _____ day of _____, 19____ at _____ o'clock _____ M.

.....
(Register of Deeds)

By _____ Deputy