

# U.S. PUBLIC LAND SURVEY MONUMENT RECORD

NOTE: THIS FORM IS INTENDED AND DESIGNED TO FULFILL ALL REQUIREMENTS OF WISCONSIN ADMINISTRATIVE CODE, CHAPTER A-E 7.08, U.S. PUBLIC LAND SURVEY MONUMENT RECORD (3)(a)(b)(c)(d)(e)(f)(g)(h)(i). ADDITIONAL SHEETS MAY BE NECESSARY TO CONFORM TO SAID REQUIREMENTS.

T 31 N, R 8 E

**(a) CORNER LOCATION:**

NORTHWEST CORNER, SECTION 24  
 TOWNSHIP 31 NORTH  
 RANGE 8 EAST  
 TOWN OF PINE RIVER  
 LINCOLN COUNTY  
 WISCONSIN

**(b) HISTORY OF ORIGINAL CORNER:**

ORIGINAL SURVEYOR: A.G. & F.S. Ellis, Set post  
 COMMENCING DATE: February 13, 1852  
 COMPLETION DATE: February 25, 1852  
 ORIGINAL BEARING TREES:  
 7" Birch; S 12° W; 8 links  
 7" Birch; N 52° W; 24 links



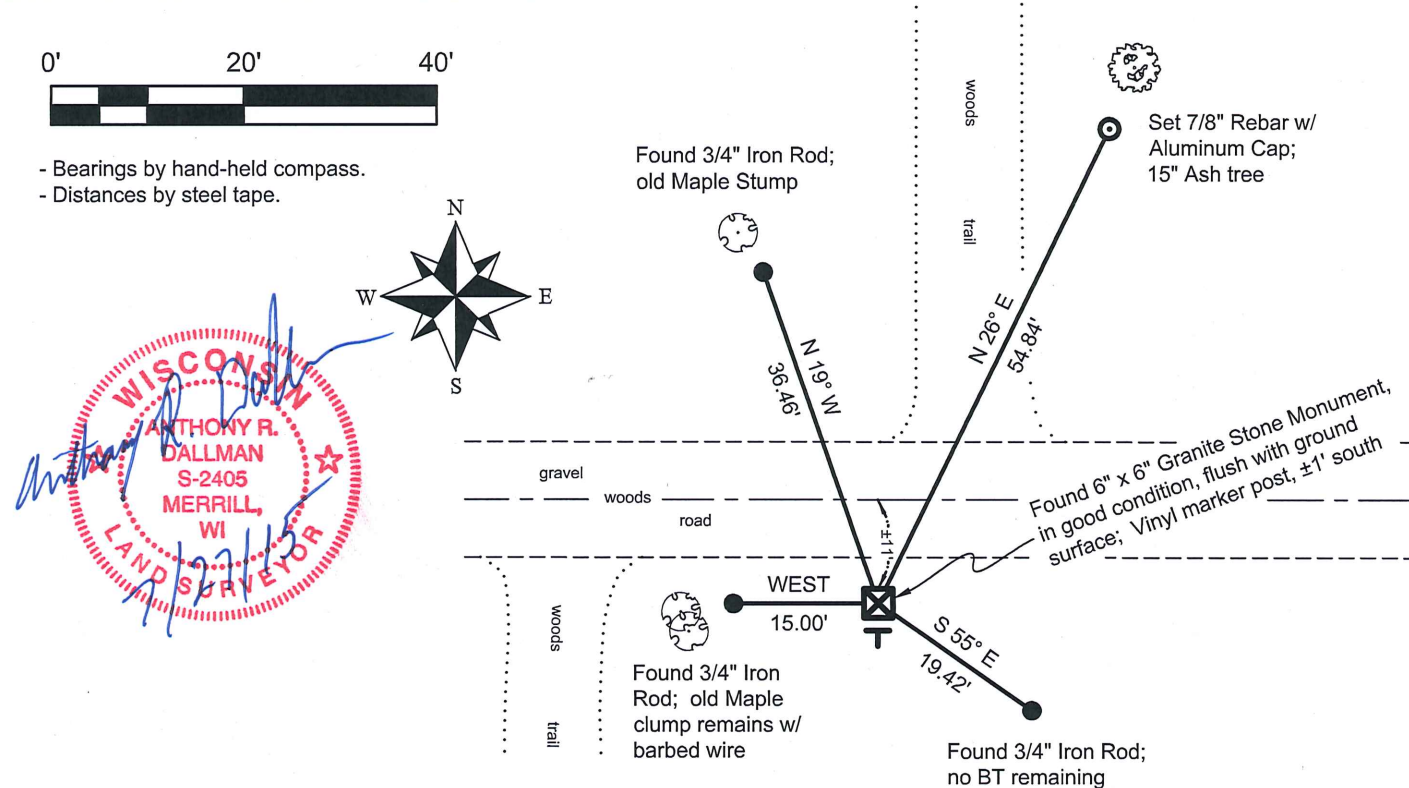
**(f)(g)(h) DESCRIPTION OF MONUMENT FOUND AT THIS CORNER AND IF IT WAS ACCEPTED. STATE ALL EVIDENCE (MATERIAL, TESTIMONIAL, OCCUPATIONAL, PLATS, RECORDS, OTHER MONUMENTS) USED AS A BASIS FOR ESTABLISHING LOCATION. IF RE-ESTABLISHING THROUGH LOST CORNER PROPORTIONATE METHODS, INDICATE ALL MONUMENTS, DISTANCES, AND DIRECTIONS USED TO ESTABLISH. INDICATE TYPE OF MONUMENTS FOUND OR SET.**

07/30/1979 - A. Drum , RLS-1456, found a 6" x 6" red Granite Stone Monument with an "X" scribed on top, .2' above grade. The Stone was found about 6' north and 2' west of a fence corner. There was a metal post 1.5' SE of Stone. He made reference ties to perpetuate the corner location.

03/07/2006 - K. Walkowski, PLS-2717, found a Granite Stone Monument during a remonumentation project for Lincoln County, shown on Lincoln County Surveyor's Office Map No. L423.

12/18/2012 - I, Anthony R. Dallman, PLS-2405, found the 6" x 6" Granite Stone Monument in good condition, flush with the ground surface. I set one new tie and remeasured other existing ties to further perpetuate the corner location, as shown in the sketch below.

**(c)(d)(e) PLAN VIEW OF THE CORNER WITH TIES TO AT LEAST FOUR WITNESSES. IF IN DISAGREEMENT WITH PREVIOUSLY ESTABLISHED CORNER, SHOW THE DISTANCES BETWEEN THE TWO CORNERS AND ALSO THE TIES TO THE DISPUTED CORNER.**



I, ANTHONY R. DALLMAN, WISCONSIN PROFESSIONAL LAND SURVEYOR, S-2405, HEREBY CERTIFY THAT THE CORNER LOCATION ON THIS RECORD WAS REFERENCED BY ME OR UNDER MY DIRECTION AND CONTROL AND THAT THIS U.S. PUBLIC LAND SURVEY MONUMENT RECORD IS COMPLETE TO THE BEST OF MY KNOWLEDGE AND BELIEF.

*Anthony R. Dallman* 7/27/15  
 ANTHONY R. DALLMAN, PLS S-2405

INDEX NO. M-21

CERTIFIED LAND CORNER RESTORATION

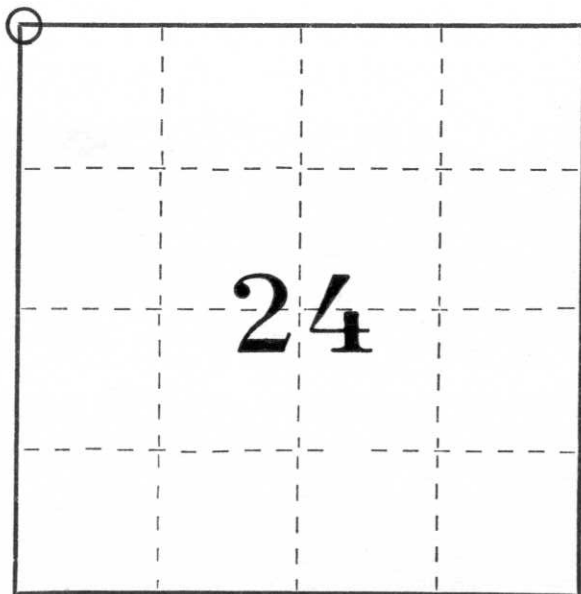
Index No. m-21

State of Wisconsin }  
County of Lincoln } ss.

I Alan C. Drum, do hereby certify that on the 15th day of June, 19 79, I found evidence of the northwest corner of Section 24 Township 31, North, Range 8 East, Fourth, Principal Meridian, as described hereon; and that from this evidence I established a new monument and accessories as described hereon to perpetuate the original location of this corner.

Resident witnesses:

.....  
.....  
.....



○ = Corner monument restored.

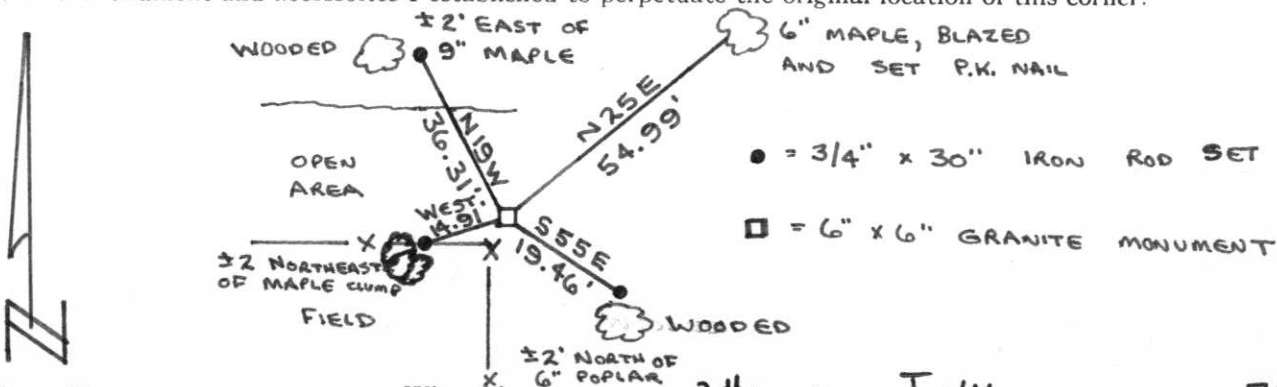
History of original corner establishment:

Date: July 1852  
Surveyor: A.G. & F.S. Ellis  
Monument: Wood Post  
Witnesses: 7" Birch S12W 8 links  
7" Birch N52W 24 links

Description of corner evidence found:

We found a 6 x 6 inch red granite stone with its top at two tenths of a foot above grade. There was an X scribed in the top. The stone was found at a fence corner about 6 feet North and about 2 feet West of the fence corner. There was a metal post 1.5 feet Southeast of the stone.

Description of monument and accessories I established to perpetuate the original location of this corner.



Dated at Wausau, Wis., this 30th day of July, 19 79.

Signature Alan C. Drum Title Registered Land Surveyor Registration No. S-1456  
(County Surveyor, Registered Land Surveyor, or other duly authorized official)

Office of Register of Deeds, County of \_\_\_\_\_, I hereby certify that the within instrument was filed in this office for record on the \_\_\_\_\_ day of \_\_\_\_\_, 1979 at \_\_\_\_\_ o'clock \_\_\_\_\_ M.

(Register of Deeds)

By \_\_\_\_\_ Deputy