

Attachment to Tie Sheet M-19, T31N, R8E

I visited corner on 12/18/2012; Book 6, pg. 32. All reference ties shown on tie sheet dated 01/03/2006 were found intact.

NOTES

- I set a **Berntsen Survey Marker Pin** at the road surface per the 2006 reference tie distances.

Anthony R. Dallman 7/27/15

Anthony R. Dallman, PLS-2405

Lincoln County Surveyor



LINCOLN COUNTY U.S. PUBLIC LAND SURVEY MONUMENT LOCATION RECORD

CORNER NUMBER 143187

SECTION 14

TOWNSHIP 31 NORTH

RANGE 8 EAST

PINE RIVER

CITY, VILLAGE, TOWN

LANDMARK BENCHMARK _____ FOUND SET RESET RE-TIED

CORNER IDENTITY: SOUTH 1/4 CORNER

LINCOLN COUNTY COORDINATE: N: 116218.73

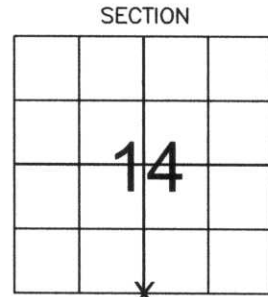
E: 452439.97

ELEVATION-(FEET): _____ DATUM: _____

WEATHER: PARTLY CLOUDY

DATE OF SURVEY: 10-25-05 TEMPERATURE: 50 °F

SURVEY PARTY: NATHAN WINCENTSEN, KEITH WALKOWSKI



LOCATION (Indicated By X)



BASIS FOR MONUMENT LOCATION:

(DESCRIBE METHOD OF SURVEY AND CORNER AUTHENTICATION)

DUG FOR SOUTH 1/4 CORNER WITH COUNTY GRADALL AT CENTERLINE AND FENCE LINE INTERSECTION FOUND GRANITE STONE TIPPED 1 FOOT BELOW ROAD SURFACE, STRAIGHTENED STONE AND ACCEPTED THIS LOCATION SET 1" IRON PIPE ALONG NORTH SIDE OF STONE AND PERPETUATED CORNER AS SHOWN BELOW.

FIELD BOOK NO. PINE RIVER PAGE NO. 10

COMPANY RIVERSIDE LAND SURVEYING LLC

CERTIFIED CORRECT:

Keith J. Walkowski
KEITH J. WALKOWSKI
 Registered Land Surveyor
 DATE: Jan. 3RD 2006

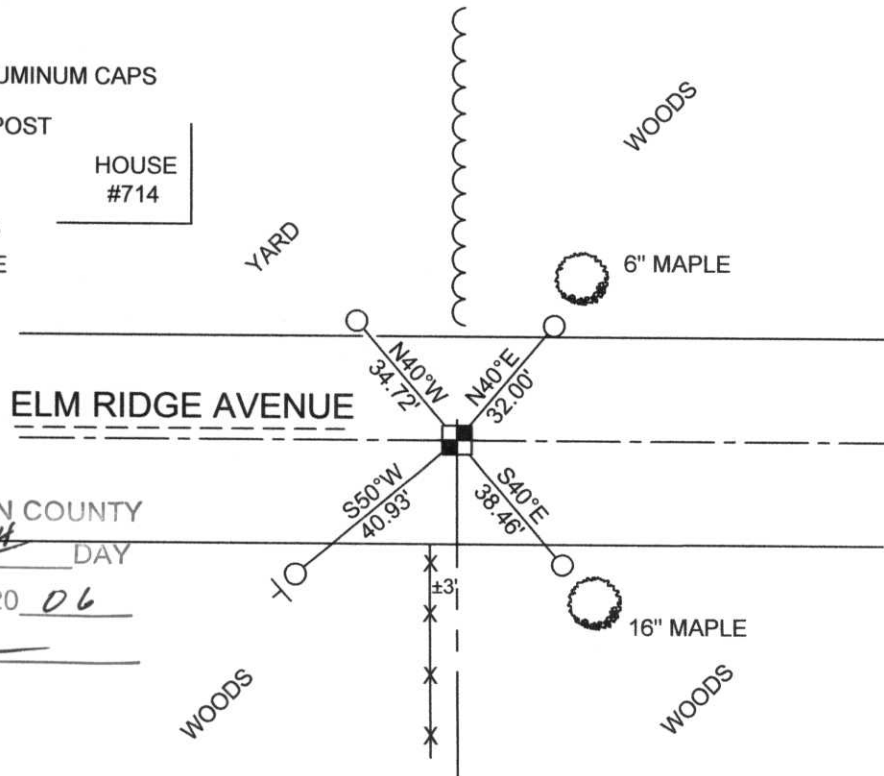
TIE SKETCH:

SHOW MINIMUM OF FOUR (4) HORIZONTAL TIE DISTANCES TO FIXED WITNESS MONUMENTS. DESCRIBE ALL MONUMENTS FOUND OR SET. CORRECT ALL DISTANCES SHOWN TO STANDARD TEMPERATURE OF 68° F.

- FOUND GRANITE STONE
- SET 3/4" REBAR WITH ALUMINUM CAPS
- VINYL SURVEY MARKER POST

NOTE

- ALL BEARINGS ARE FROM A HAND HELD MAGNETIC COMPASS
- THIS DRAWING IS NOT TO SCALE



RECEIVED BY LINCOLN COUNTY SURVEYOR THIS 6TH DAY OF January 20 06
Tony Walker
 COUNTY SURVEYOR

b1-14

143187

