

# Attachment to Tie Sheet M-17, T31N, R8E

I visited corner on 08/13/2013; Book 6, pg. 53. I found a broken Berntsen Aluminum Monument at the corner location. I set a new **Berntsen Aluminum Monument** at the position of the existing broken base. I set new reference ties (see notes)

## NOTES

- A current tie sheet was completed by C. Fieri, PLS-2954, dated 11/20/2014 that does not show certain reference ties set by me on 08/13/2013:
  - N 10° E, 61.25'; 7/8" Rebar w/ Aluminum Cap, in west shoulder of Hwy "64", +/-9' east of edge of asphalt.
  - N 27° W, 65.06'; 7/8" Rebar w/ Aluminum Cap, +/-3.5' SE of 4" Spruce tree
  - S 30° W, 56.85'; 7/8" Rebar w/ Aluminum Cap, +/-8' west of "BURIED CABLE" sign.

*Anthony R. Dallman* 7/27/15

Anthony R. Dallman, PLS-2405

Lincoln County Surveyor



# LINCOLN COUNTY U.S. PUBLIC LAND SURVEY MONUMENT LOCATION RECORD

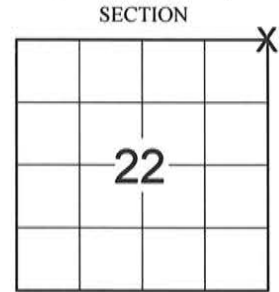
SECTION 22  
TOWNSHIP 31 N  
RANGE 8 E

M-17  
NO.

LANDMARK       BENCHMARK  
CORNER IDENTITY: NE CORNER SEC. 22 (BERNTSEN MONUMENT)  
FOUND   
SET   
RESET   
RE-TIED

PINE RIVER  
CITY, VILLAGE, TOWN

LINCOLN COUNTY COORDINATE: N: 116214.9310  
E: 449797.0390



ELEVATION-(FEET): \_\_\_\_\_ DATUM: \_\_\_\_\_

WEATHER: CLEAR AND SUNNY

DATE OF SURVEY: 9/12/2014 TEMPERATURE: 65 °F

SURVEY PARTY: KEITH WALKOWSKI AND CHRIS FIERI

## BASIS FOR MONUMENT LOCATION:

(DESCRIBE METHOD OF SURVEY AND CORNER AUTHENTICATION)

7/17/1981 - E. Abendroth excavated in centerline of S.T.H. "64" at location and depth described by Ed Utecht former Town Chairman. He found no evidence and set the corner by proportionate measurement. Set out ties to perpetuate the corner location.

9/15/2014 - I visited the corner location prior to the resurfacing of Highway "64" and recovered the Berntsen Monument of record. Also recovered two (2) witness monuments from the previous corner restoration form. Distances checked well. Set four (4) Berntsen SSSDR-130 witness monuments and returned after construction to confirm that the monument at the corner position had not been disturbed.

LOCATION (Indicated By)



CERTIFIED CORRECT:

*Christopher L. Fieri*

CHRISTOPHER L. FIERI S-2954

Registered Land Surveyor

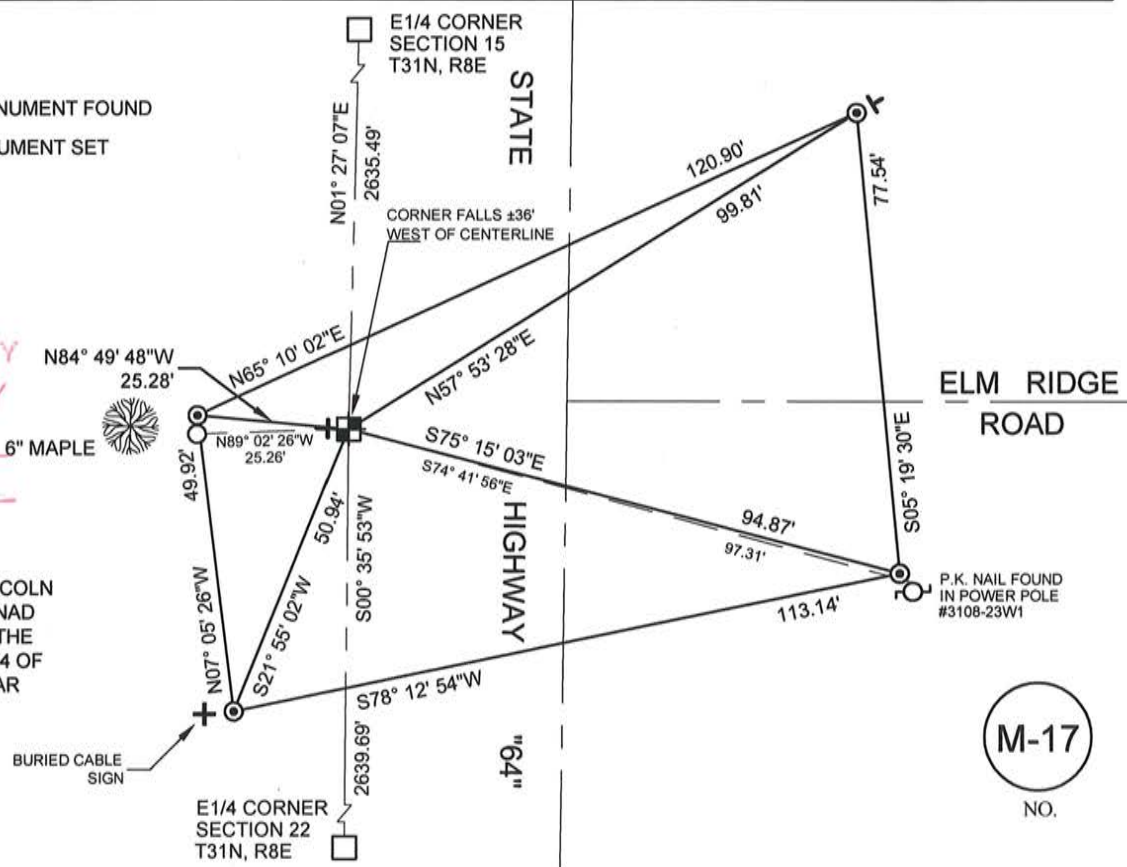
DATE: 11-20-2014

FIELD BOOK NO. 41 PAGE NO. 16

COMPANY RIVERSIDE LAND SURVEYING LLC

## TIE SKETCH:

- BERNTSEN ALUMINUM MONUMENT FOUND
- BERNTSEN SSSDR-130 MONUMENT SET
- 2" O.D. IRON PIPE FOUND
- VINYL T-POST SET



RECEIVED BY LINCOLN COUNTY  
SURVEYOR THIS 4TH DAY  
OF December, 20 14  
*Tony Dalk*  
COUNTY SURVEYOR

BEARINGS ARE BASED ON THE LINCOLN COUNTY COORDINATE SYSTEM NAD (83) 2011 AND REFERENCED TO THE EAST LINE OF THE NORTHEAST 1/4 OF SECTION 22 MEASURED TO BEAR SOUTH 00°35'53" WEST

M-17  
NO.

CERTIFIED LAND CORNER RESTORATION

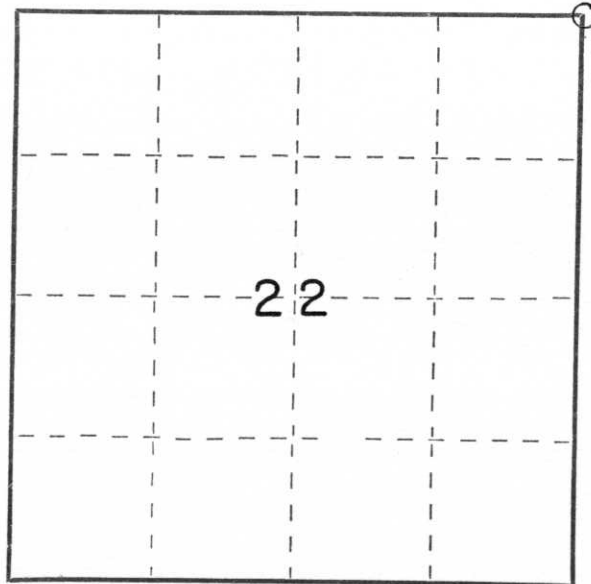
Index No. m-17

State of Wisconsin }  
 County of Lincoln } ss.

I Edwin R. Abendroth, do hereby certify that on the 17th day of July, 1981, I found evidence of the NE corner of Section 22 Township 31, North, Range 8 East, Fourth, Principal Meridian, as described hereon; and that from this evidence I established a new monument and accessories as described hereon to perpetuate the original location of this corner.

Resident witnesses:

Ed Utecht  
 \_\_\_\_\_  
 \_\_\_\_\_  
 \_\_\_\_\_



○ = Corner monument restored.

History of original corner establishment:

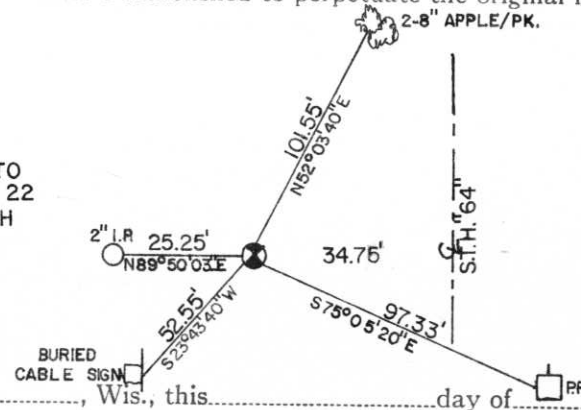
Original corner was wood post. Granite stone was placed during Lincoln County remonumentation.

Description of corner evidence found:

After excavating in centerline of S.T.H. "64" at location and depth described by Ed Utecht former Town Chairman, we discovered no evidence. Set corner by single proportionate measurement.

Description of monument and accessories I established to perpetuate the original location of this corner:

BEARINGS REFERENCED TO  
 EAST LINE SE 1/4 SEC. 22  
 ASSUMED BEARING NORTH



Dated at \_\_\_\_\_, Wis., this \_\_\_\_\_ day of \_\_\_\_\_, 19\_\_\_\_\_

Signature \_\_\_\_\_ Title \_\_\_\_\_ Registration No. \_\_\_\_\_  
 (County Surveyor, Registered Land Surveyor, or other duly authorized official)

Office of Register of Deeds, County of \_\_\_\_\_, I hereby certify that the within instrument was filed in this office for record on the \_\_\_\_\_ day of \_\_\_\_\_, 19\_\_\_\_\_ at \_\_\_\_\_ o'clock \_\_\_\_\_ M.

\_\_\_\_\_  
 (Register of Deeds)

By \_\_\_\_\_ Deputy