

U.S. PUBLIC LAND SURVEY MONUMENT RECORD

NOTE: THIS FORM IS INTENDED AND DESIGNED TO FULFILL ALL REQUIREMENTS OF WISCONSIN ADMINISTRATIVE CODE, CHAPTER A-E 7.08, U.S. PUBLIC LAND SURVEY MONUMENT RECORD (3)(a)(b)(c)(d)(e)(f)(g)(h)(i). ADDITIONAL SHEETS MAY BE NECESSARY TO CONFORM TO SAID REQUIREMENTS.

T 31 N, R 8 E

(a) CORNER LOCATION:

NORTH QUARTER CORNER, SECTION 22
 TOWNSHIP 31 NORTH
 RANGE 8 EAST
 TOWN OF PINE RIVER
 LINCOLN COUNTY
 WISCONSIN

(b) HISTORY OF ORIGINAL CORNER:

ORIGINAL SURVEYOR: A.G. & F.S. Ellis, Set post
 COMMENCING DATE: February 13, 1852
 COMPLETION DATE: February 25, 1852
 ORIGINAL BEARING TREES:
 10" Fir; N 30° E; 11 links
 8" Sugar Maple; S 22° W; 16 links



(f)(g)(h) DESCRIPTION OF MONUMENT FOUND AT THIS CORNER AND IF IT WAS ACCEPTED. STATE ALL EVIDENCE (MATERIAL, TESTIMONIAL, OCCUPATIONAL, PLATS, RECORDS, OTHER MONUMENTS) USED AS A BASIS FOR ESTABLISHING LOCATION. IF RE-ESTABLISHING THROUGH LOST CORNER PROPORTIONATE METHODS, INDICATE ALL MONUMENTS, DISTANCES, AND DIRECTIONS USED TO ESTABLISH. INDICATE TYPE OF MONUMENTS FOUND OR SET.

07/09/1981 - E. Abendroth, RLS-798, found an existing 6" x 6" Granite Stone, 30" above ground. He set reference ties to perpetuate the corner location.

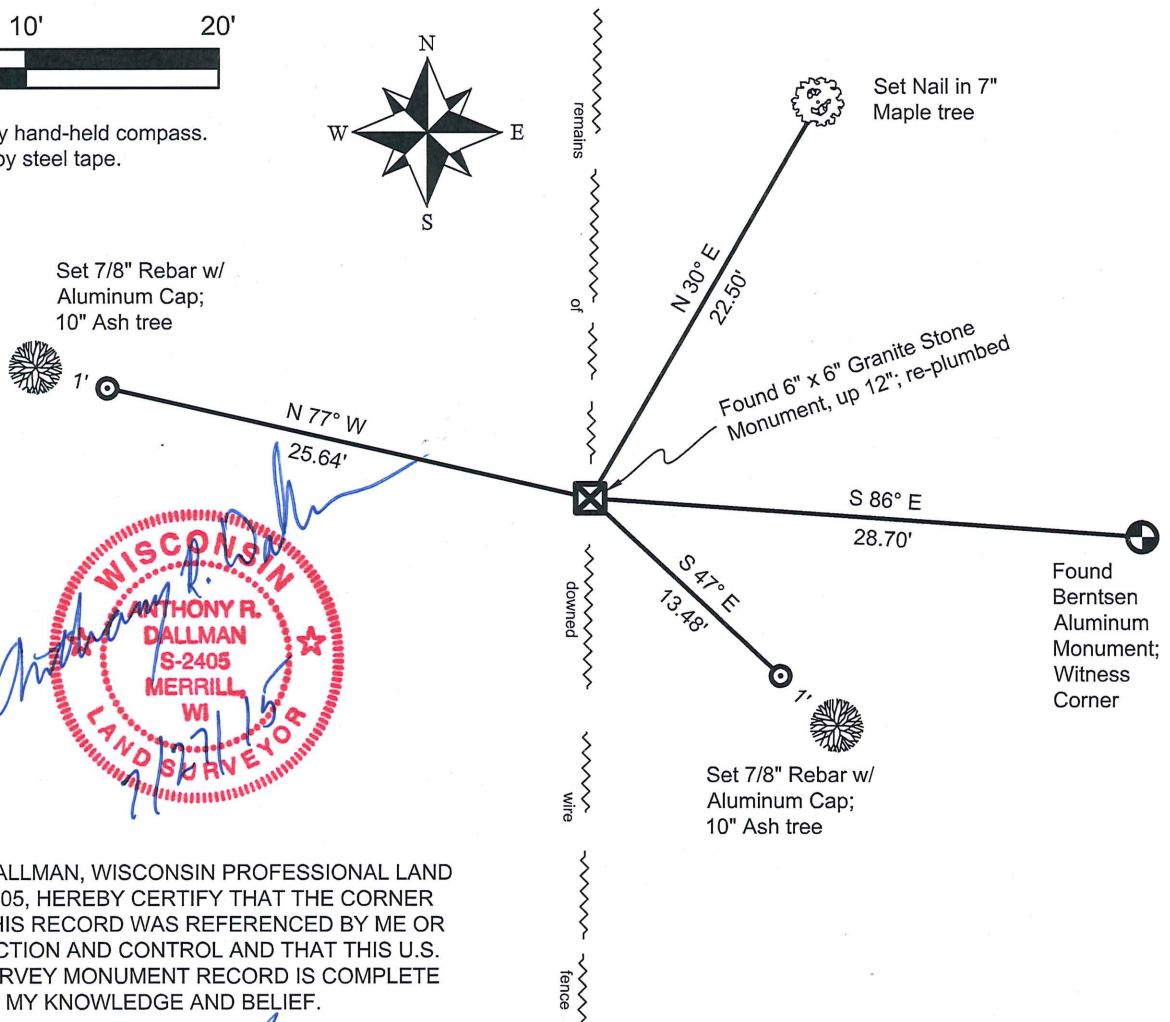
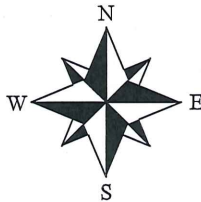
03/07/2006 - K. Walkowski, PLS-2717, found a Granite Stone at the corner location for a Remonumentation Project shown on Lincoln County Surveyor's Office Map No. L423.

08/29/2013 - I, Anthony R. Dallman, PLS-2405, found the 6" x 6" Granite Stone Monument at the corner location, protruding 12" above the ground surface and leaning southerly. I re-plumbed the Stone in place, set new reference ties and remeasured one existing tie to further perpetuate the corner location, as shown in the sketch below.

(c)(d)(e) PLAN VIEW OF THE CORNER WITH TIES TO AT LEAST FOUR WITNESSES. IF IN DISAGREEMENT WITH PREVIOUSLY ESTABLISHED CORNER, SHOW THE DISTANCES BETWEEN THE TWO CORNERS AND ALSO THE TIES TO THE DISPUTED CORNER.



- Tie bearings by hand-held compass.
- Tie distances by steel tape.



I, ANTHONY R. DALLMAN, WISCONSIN PROFESSIONAL LAND SURVEYOR, S-2405, HEREBY CERTIFY THAT THE CORNER LOCATION ON THIS RECORD WAS REFERENCED BY ME OR UNDER MY DIRECTION AND CONTROL AND THAT THIS U.S. PUBLIC LAND SURVEY MONUMENT RECORD IS COMPLETE TO THE BEST OF MY KNOWLEDGE AND BELIEF.

Anthony R. Dallman 7/27/15
 ANTHONY R. DALLMAN, PLS S-2405

INDEX NO. M-15

CERTIFIED LAND CORNER RESTORATION

Index No. M-15

State of Wisconsin }
County of LINCOLN } ss.

History of original corner establishment:

Original corner was wood post. Granite stone was placed during Lincoln County remonumentation.

I EDWIN R. ABENDROTH, do hereby certify that on the 7th day of JULY, 1981, I found evidence of the NORTH 1/4 corner of SEC. 22 Township 31, North, Range 8 EAST, Fourth, Principal Meridian, as described hereon; and that from this evidence I established a new monument and accessories as described hereon to perpetuate the original location of this corner.

NO ORIGINAL EVIDENCE DISCOVERED

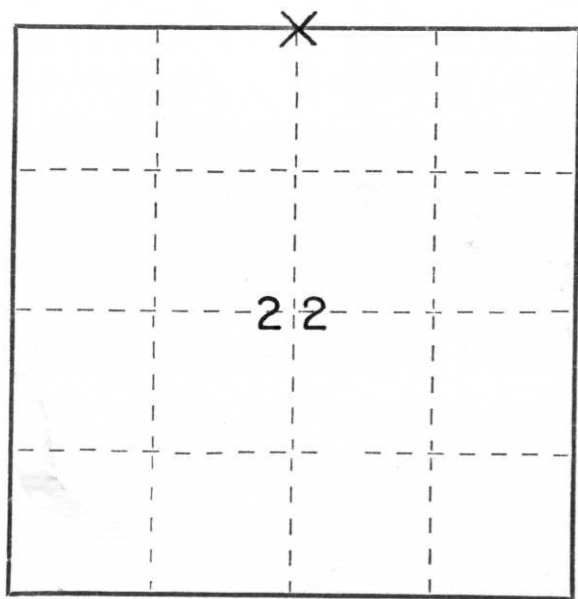
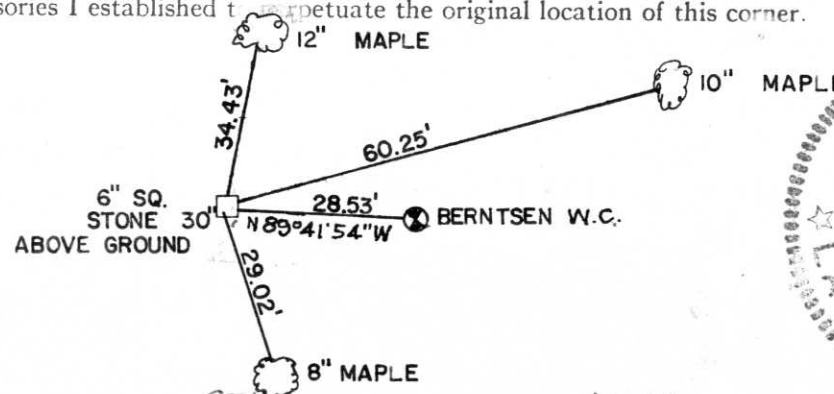
Description of corner evidence found:

Resident witnesses:

FOUND EXISTING 6"X6" GRANITE STONE 30" ABOVE GROUND

Description of monument and accessories I established to perpetuate the original location of this corner.

NOTE:
ALL BEARING TREES
ARE BLAZED P.K. NAILS
SET IN BLAZE.



○ = Corner monument restored.

Dated at WAUSAU, Wis., this 9TH day of JULY, 1981

Signature Edwin R. Abendroth Title REG. LAND SURVEYOR Registration No. S-798
(County Surveyor, Registered Land Surveyor, or other duly authorized official)

Office of Register of Deeds, County of LINCOLN, I hereby certify that the within instrument was filed in this office for record on the _____ day of _____, 19____ at _____ o'clock _____ M.

(Register of Deeds)

By _____ Deputy