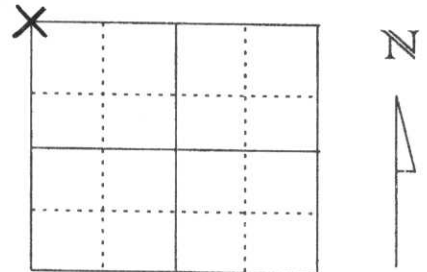


# U.S. PUBLIC LAND SURVEY MONUMENT RECORD

Note: This form is intended and designed to fulfill all requirements of Wisconsin Administrative Code, Chapter A-E 5.02, U.S. Public Land Survey Monument Record (3) (a) (b) (c) (d) (e) (f) (g) (h) (l). An additional sheet may be added if necessary to conform with said requirements.

(a) Corner location: Township 31 North  
 Range 8 East  
 Town/City/Village PINE RIVER  
 County Lincoln



Section 21

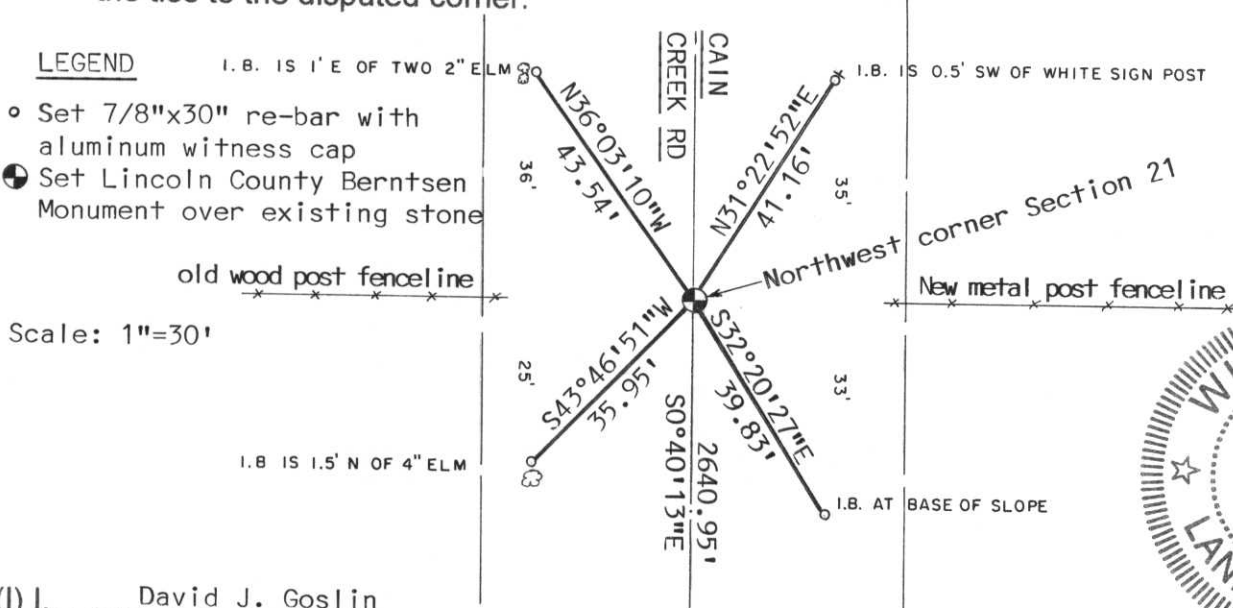
(b) (f) (g) (h) Description of monument found at this corner and if it was accepted, state all evidence (material, testimonial, occupational, plats, records, other monuments) used as a basis for accepting. If not accepted or if nothing was found, state evidence used as basis for establishing location. If reestablished through lost corner proportionate methods, indicate all monuments, distances and directions used to establish.

Notes of the original government survey indicate wood posts were set at all Section and quarter-section corners. Stone Monuments were subsequently placed at all corners in this area during remonumentation surveys.

We excavated in blacktop road with Lincoln County grade-all. Found 5"x5" white stone monument 2 feet long and 4 feet below road surface. Corner location was at the centerline of road and in line with old fenceline to the west. Accepted stone as correct location for Section corner. Because of the depth of stone we set a Lincoln County Berntsen Monument over stone with top 6" below road surface. Tied out as shown below.

RECEIVED AT LINCOLN COUNTY  
 COURTHOUSE THIS 2<sup>nd</sup> DAY  
 OF April 20 03  
*Tony Datta*  
 LAND INFORMATION OFFICE

(c) (d) (e) Plan view of corner with ties to at least 4 witness monuments. If in disagreement with previously established corner, show the distances between the two corners and also indicate the ties to the disputed corner.



(l) I, David J. Goslin  
 (type or print name) certify that the corner location on this record was determined by me or under my direction and control and that this U.S. Public Land Survey Monument Record is correct and complete to the best of my knowledge and belief.

*David J. Goslin* \_\_\_\_\_  
 Signature Date

March 28, 2003

Index No. M-9