

U.S. PUBLIC LAND SURVEY MONUMENT RECORD

NOTE: THIS FORM IS INTENDED AND DESIGNED TO FULFILL ALL REQUIREMENTS OF WISCONSIN ADMINISTRATIVE CODE, CHAPTER A-E 7.08, U.S. PUBLIC LAND SURVEY MONUMENT RECORD (3)(a)(b)(c)(d)(e)(f)(g)(h)(i). ADDITIONAL SHEETS MAY BE NECESSARY TO CONFORM TO SAID REQUIREMENTS.

T 31 N, R 8 E

(a) CORNER LOCATION:

NORTH QUARTER CORNER, SECTION 20
 TOWNSHIP 31 NORTH
 RANGE 8 EAST
 TOWN OF PINE RIVER
 LINCOLN COUNTY
 WISCONSIN

(b) HISTORY OF ORIGINAL CORNER:

ORIGINAL SURVEYOR: A.G. & F.S. Ellis, Set post
 COMMENCING DATE: February 13, 1852
 COMPLETION DATE: February 25, 1852
 ORIGINAL BEARING TREES:
 18" Sugar Maple; N 15° E; 15 links
 20" Linn (Basswood); S 7° E; 13 links



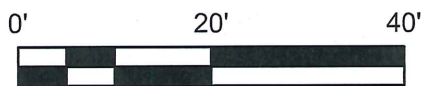
(f)(g)(h) DESCRIPTION OF MONUMENT FOUND AT THIS CORNER AND IF IT WAS ACCEPTED. STATE ALL EVIDENCE (MATERIAL, TESTIMONIAL, OCCUPATIONAL, PLATS, RECORDS, OTHER MONUMENTS) USED AS A BASIS FOR ESTABLISHING LOCATION. IF RE-ESTABLISHING THROUGH LOST CORNER PROPORTIONATE METHODS, INDICATE ALL MONUMENTS, DISTANCES, AND DIRECTIONS USED TO ESTABLISH. INDICATE TYPE OF MONUMENTS FOUND OR SET.

02/04/1981 - S. Schwark, RLS-1205, found a 6" x 6" red Granite Stone Monument at an old and broken down fence intersection. The top of the Stone was .2' above grade. He made reference ties to perpetuate the corner location.

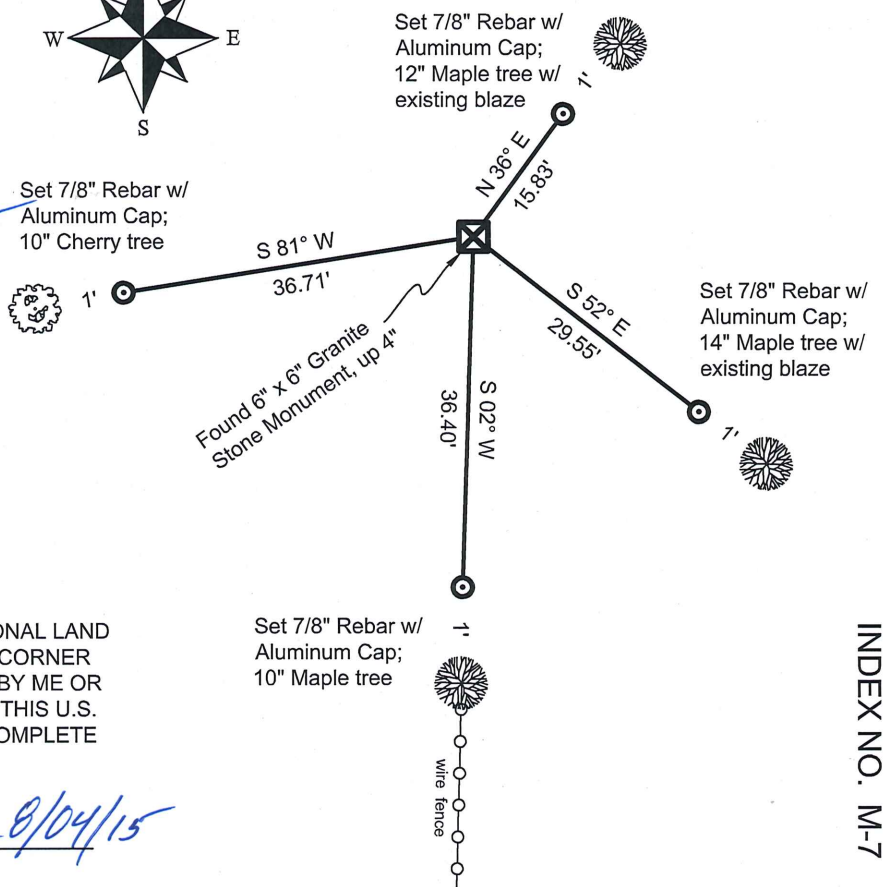
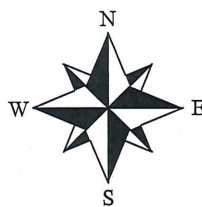
03/07/2006 - K. Walkowski, PLS-2717, found the Granite Stone during a remonumentation project for Lincoln County, shown on Lincoln County Survey Office Map No. L423.

10/10/2014 - I, Anthony R. Dallman, PLS-2405, found the 6" x 6" Granite Stone Monument, in good condition ±4" above the ground surface. I set new reference ties to further perpetuate the corner location.

(c)(d)(e) PLAN VIEW OF THE CORNER WITH TIES TO AT LEAST FOUR WITNESSES. IF IN DISAGREEMENT WITH PREVIOUSLY ESTABLISHED CORNER, SHOW THE DISTANCES BETWEEN THE TWO CORNERS AND ALSO THE TIES TO THE DISPUTED CORNER.



- Bearings by hand-held compass.
 - Distances by steel tape.



I, ANTHONY R. DALLMAN, WISCONSIN PROFESSIONAL LAND SURVEYOR, S-2405, HEREBY CERTIFY THAT THE CORNER LOCATION ON THIS RECORD WAS REFERENCED BY ME OR UNDER MY DIRECTION AND CONTROL AND THAT THIS U.S. PUBLIC LAND SURVEY MONUMENT RECORD IS COMPLETE TO THE BEST OF MY KNOWLEDGE AND BELIEF.

Anthony R. Dallman 8/04/15
 ANTHONY R. DALLMAN, PLS S-2405

INDEX NO. M-7

CERTIFIED LAND CORNER RESTORATION

Index No. M-7

State of Wisconsin }
County of Lincoln } ss.

History of original corner establishment:

Wood post set by original government surveyor.

I, Sheridan D. Schwark, do hereby certify that on the 22nd day of January, 1981, I found evidence of the N 1/4 corner of Section 20 Township 31, North, Range 8 East, Fourth, Principal Meridian, as described hereon; and that from this evidence I established a new monument and accessories as described hereon to perpetuate the original location of this corner.

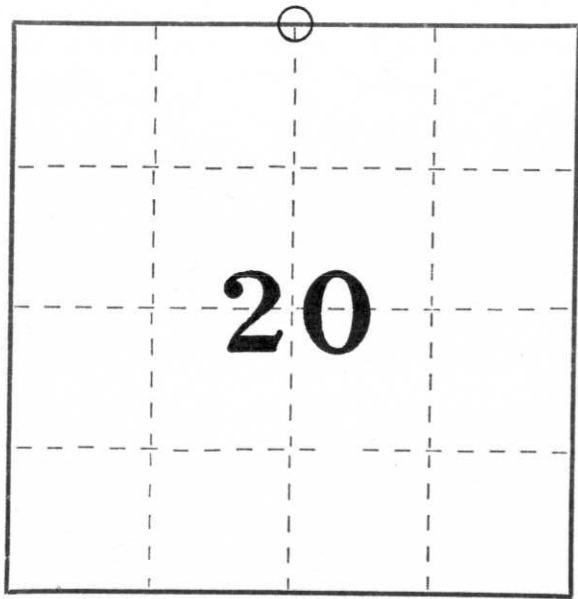
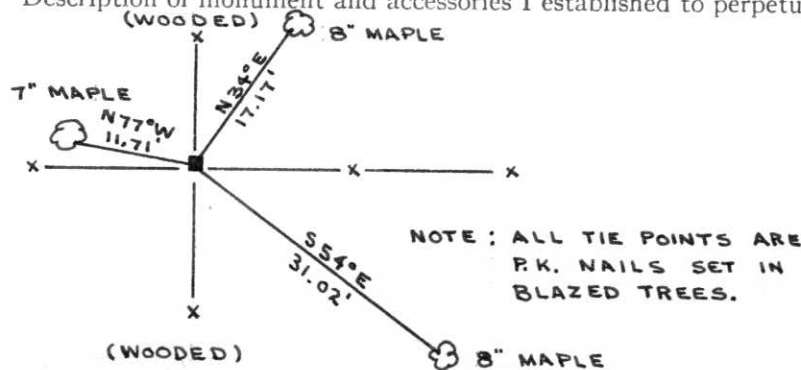
Description of corner evidence found:

We found a 6" x 6" red granite stone monument at an old and broken down fence intersection. The top of the stone was .2' above grade.

Resident witnesses:

.....
.....
.....

Description of monument and accessories I established to perpetuate the original location of this corner.



○ = Corner monument restored.

Dated at Merrill, Wis., this 4th day of February, 1981.

Signature Sheridan D. Schwark Title Registered Land Surveyor Registration No. S-1205
(County Surveyor, Registered Land Surveyor, or other duly authorized official)

Office of Register of Deeds, County of _____, I hereby certify that the within instrument was filed in this office for record on the _____ day of _____, 19____ at _____ o'clock _____ M.

.....
(Register of Deeds)

By _____ Deputy