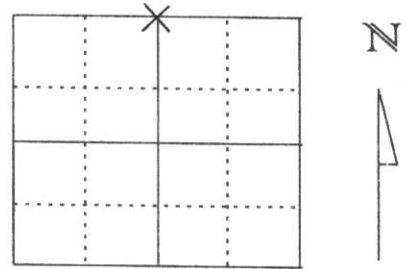


# U.S. PUBLIC LAND SURVEY MONUMENT RECORD

Note: This form is intended and designed to fulfill all requirements of Wisconsin Administrative Code, Chapter A-E 5.02, U.S. Public Land Survey Monument Record (3) (a) (b) (c) (d) (e) (f) (g) (h) (l). An additional sheet may be added if necessary to conform with said requirements.

(a) Corner location: Township 31 North  
 Range 8 East  
 Town/City/Village PINE RIVER  
 County Lincoln



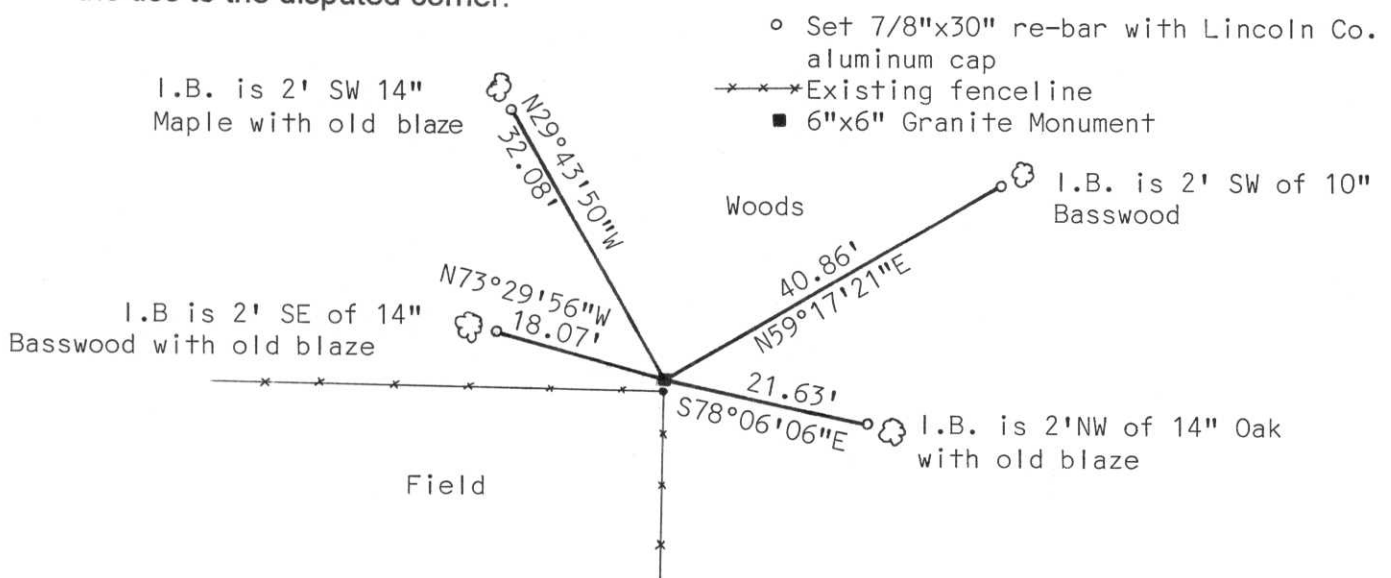
Section 19

(b) (f) (g) (h) Description of monument found at this corner and if it was accepted, state all evidence (material, testimonial, occupational, plats, records, other monuments) used as a basis for accepting. If not accepted or if nothing was found, state evidence used as basis for establishing location. If reestablished through lost corner proportionate methods, indicate all monuments, distances and directions used to establish.

Sheridan Schwark had previously found and tied out existing 6" x 6" Granite Monument. We found stone heaved and tipped and the top 2/3 broken off base. 3 ties remain but blazes are grown over. Re-set entire stone with top flush with ground. Set out 4 new ties and set white witness post 1' north of stone. Existing fence corner is directly south of stone.

RECEIVED AT LINCOLN COUNTY  
 COURTHOUSE THIS 7<sup>TH</sup> DAY  
 OF November 20 00  
*Tony Dallman*  
 LAND INFORMATION OFFICE

(c) (d) (e) Plan view of corner with ties to at least 4 witness monuments. If in disagreement with previously established corner, show the distances between the two corners and also indicate the ties to the disputed corner.



(l) I, David J. Goslin RLS No. 2280  
 (type or print name) certify that the corner location on this record was determined by me or under my direction and control and that this U.S. Public Land Survey Monument Record is correct and complete to the best of my knowledge and belief.

*David J. Goslin*  
 Signature

11-4-00

Date



CERTIFIED LAND CORNER RESTORATION

Index No. M-3

State of Wisconsin }  
 County of Lincoln } ss.

I, Sheridan D. Schwark, do hereby certify that on the 22nd day of January, 1981, I found evidence of the N 1/4 corner of Section 19 Township 31, North, Range 8 East, Fourth, Principal Meridian, as described hereon; and that from this evidence I established a new monument and accessories as described hereon to perpetuate the original location of this corner.

Resident witnesses:

.....

.....

.....

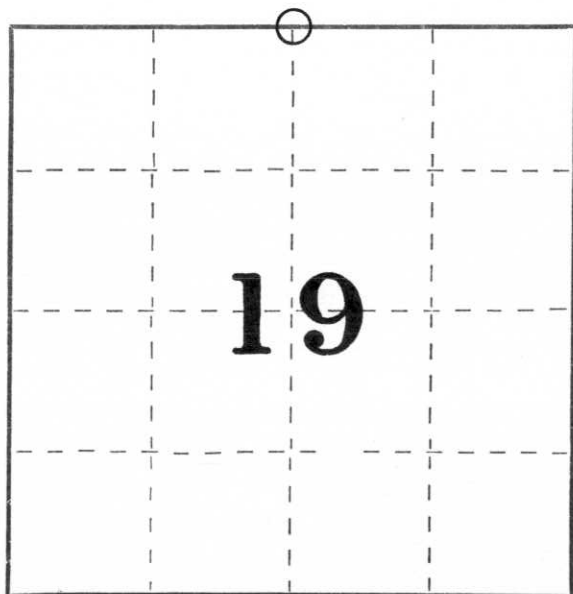
History of original corner establishment:

Wood post set by original government surveyor.

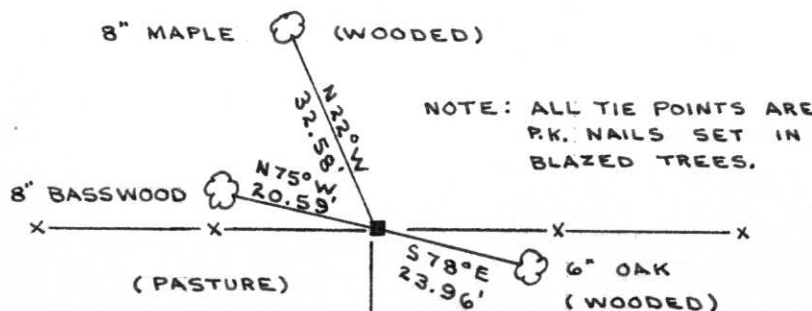
Description of corner evidence found:

We found a 6" x 6" red granite stone monument at a fence intersection. The top of the stone was .2' above grade.

Description of monument and accessories I established to perpetuate the original location of this corner.



○ = Corner monument restored.



NOTE: ALL TIE POINTS ARE PK. NAILS SET IN BLAZED TREES.



Dated at Merrill, Wis., this 4th day of February, 1981.

Signature Sheridan D. Schwark Title Registered Land Surveyor Registration No. S-1205  
 (County Surveyor, Registered Land Surveyor, or other duly authorized official)

Office of Register of Deeds, County of \_\_\_\_\_, I hereby certify that the within instrument was filed in this office for record on the \_\_\_\_\_ day of \_\_\_\_\_, 19\_\_\_\_ at \_\_\_\_\_ o'clock \_\_\_\_\_ M.

.....  
 (Register of Deeds)

By \_\_\_\_\_ Deputy





