

U.S. PUBLIC LAND SURVEY MONUMENT RECORD

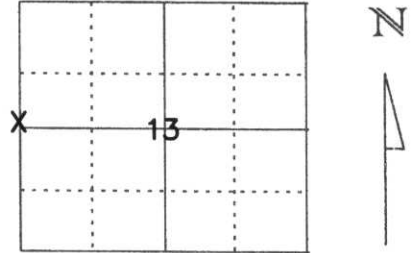
Note: This form is intended and designed to fulfill all requirements of Wisconsin Administrative Code, Chapter A-E 5.02, U.S. Public Land Survey Monument Record (3) (a) (b) (c) (d) (e) (f) (g) (h) (l). An additional sheet may be added if necessary to conform with said requirements.

(a) Corner location: Township 31 North

Range 8 East

Town/City/Village PINE RIVER

County Lincoln



Section 13

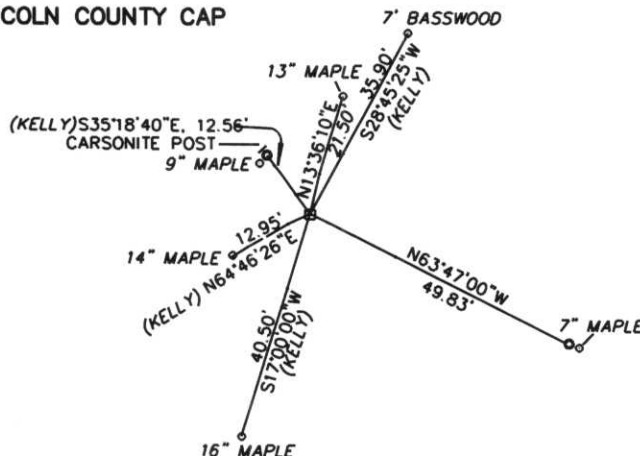
(b) (f) (g) (h) Description of monument found at this corner and if it was accepted, state all evidence (material, testimonial, occupational, plats, records, other monuments) used as a basis for accepting. If not accepted or if nothing was found, state evidence used as basis for establishing location. If reestablished through lost corner proportionate methods, indicate all monuments, distances and directions used to establish.

FOUND 6"x 6" RED GRANITE STONE AT THE NORTH EDGE OF SMALL MEANDERING CREEK. ORIGINAL CORNER WAS A WOODEN POST SET IN 1852 BY A.G. & F.L. ELLIS, THEN THE STONE WAS SET IN THE 1920'S. IT WAS THEN REVISITED BY BILL KELLY IN 1975 WHO RETIED CORNER WITH NEW BT'S. WE PLACED MOUND OF STONE AROUND GRANITE STONE AND RETIED CORNER.

RECEIVED AT LINCOLN COUNTY
COURTHOUSE THIS 28th DAY
OF July 19 99
Pat Priebe
LAND INFORMATION OFFICE

(c) (d) (e) Plan view of corner with ties to at least 4 witness monuments. If in disagreement with previously established corner, show the distances between the two corners and also indicate the ties to the disputed corner.

• 7/8" REBAR WITH LINCOLN COUNTY CAP



(l) I, William W. Nutter, RLS, S-2299

(type or print name) certify that the corner location on this record was determined by me or under my direction and control and that this U.S. Public Land Survey Monument Record is correct and complete to the best of my knowledge and belief.

William W. Nutter, RLS, S-2299

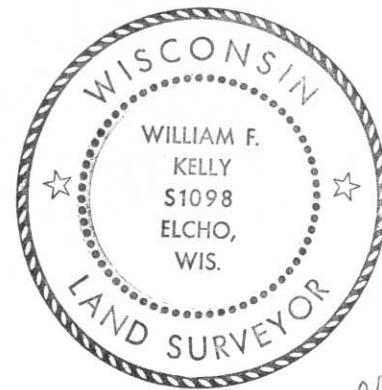
Signature

7-27-99

Date

Index No. K-21

CERTIFIED LAND CORNER RESTORATION



Index No. K-21

State of Wisconsin }
County of LINCOLN } ss.

History of original corner establishment:

I WILLIAM F. KELLY, do hereby certify that on the 13TH day of FEBRUARY, 1975, I found evidence of the 1/4 SECTION corner of SECTIONS 14 & 13 Township 31, North, Range 8 EAST, Fourth, Principal Meridian, as described hereon; and that from this evidence I established a new monument and accessories as described hereon to perpetuate the original location of this corner.

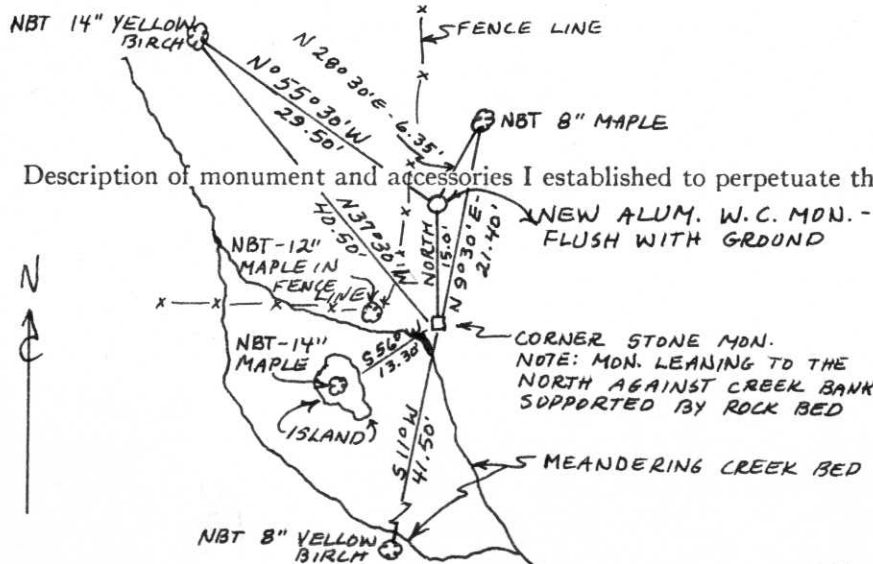
Resident witnesses:

ARNOLD KAUTZ

Description of corner evidence found:

LOCATED 6x6 GRANITE STONE IN ROCK BED AT EDGE OF SMALL MEANDERING CREEK. STONE PLACED IN 1920s AND IDENTIFIED BY RESIDENT WITNESS AS THE 1/4 CORNER.

William F. Kelly



Description of monument and accessories I established to perpetuate the original location of this corner.

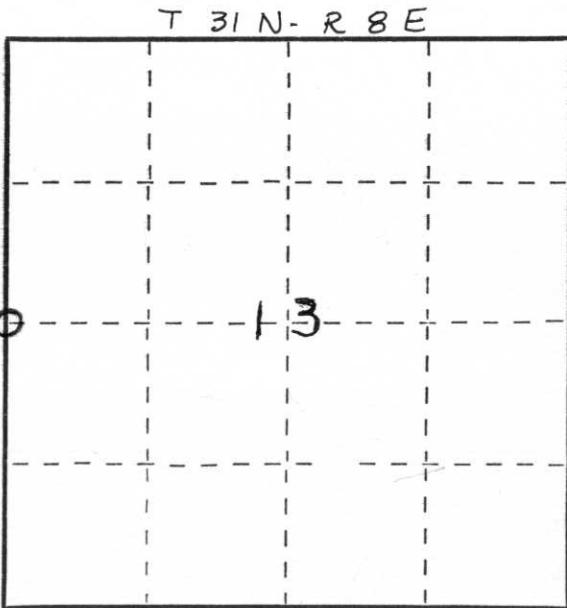
NEW ALUM. W.C. MON. - FLUSH WITH GRDND
CORNER STONE MON. NOTE: MON. LEANING TO THE NORTH AGAINST CREEK BANK SUPPORTED BY ROCK BED

SET A NEW ALUMINUM MONUMENT AS A WITNESS CORNER - 15 FT. NORTH OF THE CORNER.



MONUMENT MARKED:

NOTE: NEW BEARING TREES SCRIBED NBT AND MARKED WITH A + AT BASE.



Dated at ELCHO, Wis., this 13TH day of FEBRUARY, 1975.

Signature William F. Kelly Title REGISTERED LAND SURVEYOR Registration No. 51098
(County Surveyor, Registered Land Surveyor, or other duly authorized official)

Office of Register of Deeds, County of _____, I hereby certify that the within instrument was filed in this office for record on the _____ day of _____, 19____ at _____ o'clock _____ M.

(Register of Deeds)

By _____ Deputy

○ = Corner monument restored.