

U.S. PUBLIC LAND SURVEY MONUMENT RECORD

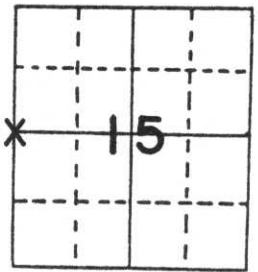
Note: This form is intended and designed to fulfill all requirements of Wisconsin Administrative Code, Chapter A-E 5.02, U.S. Public Land Survey Monument Record (3) (a) (b) (c) (d) (e) (f) (g) (h) (i). An additional sheet may be added if necessary to conform with said requirements.

(a) Corner location: Township 31 North

Range 8 East

Town/City/Village PINE RIVER

County LINCOLN



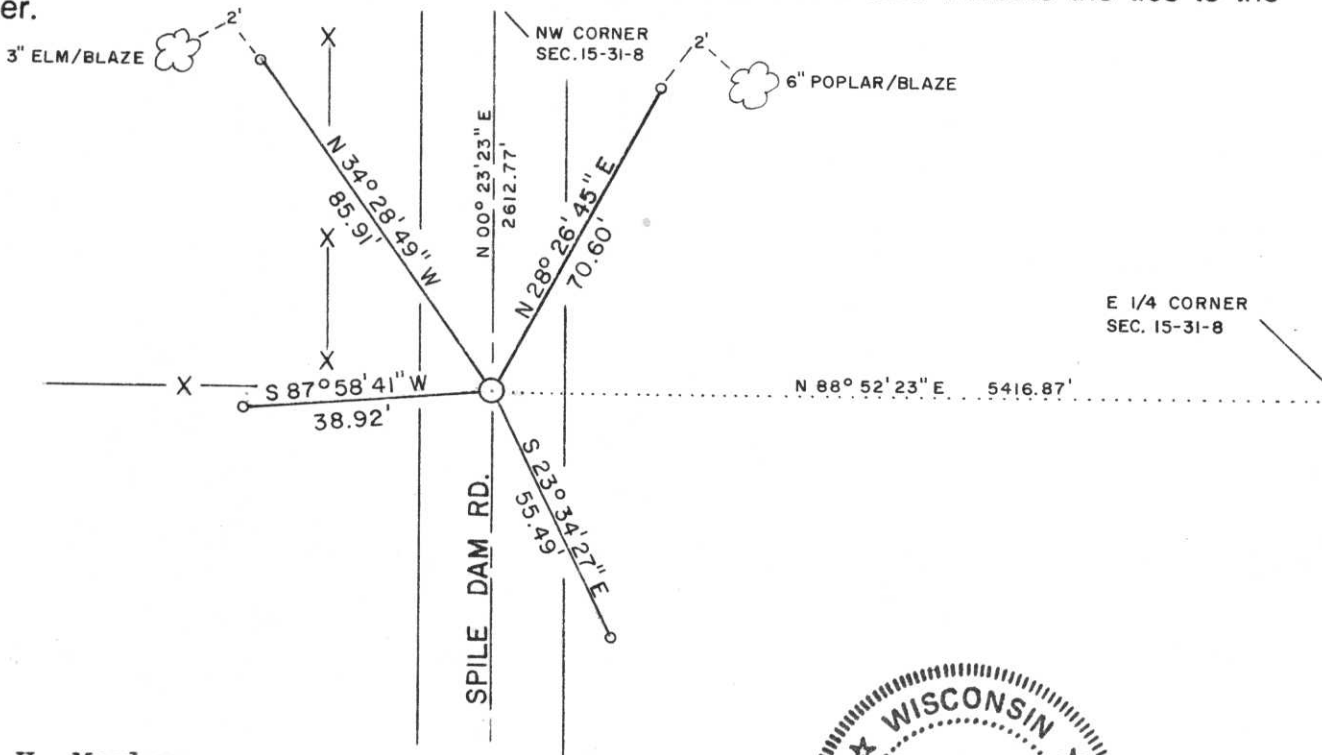
Section 15

(b) (f) (g) (h) Description of monument found at this corner and if it was accepted, state all evidence (material, testimonial, occupational, plats, records, other monuments) used as a basis for accepting. If not accepted or if nothing was found, state evidence used as basis for establishing location. If reestablished through lost corner proportionate methods, indicate all monuments, distances and directions used to establish.

Excavated roadway with backhoe. Found no evidence of corner or accessories. Traversed all of Section 15 locating existing forty fences, roadways and other government corners previously established. Accepted intersection of fence line to West with road centerline as best evidence of corner location. This position fits area forty fences very well. Set a Lincoln County Berntsen Monument at corner such that top of Monument is about 8 inches below gravel roadway surface.

NOTE: All ties are to 1" x 24" Iron Pipes set flush with ground. Tie Bearings are referenced to the West line of the Northwest $\frac{1}{4}$ of Section 15-31-8 E.

(c) (d) (e) Plan view of corner with ties to at least 4 witness monuments. If in disagreement with previously established corner, show the distances between the two corners and also indicate the ties to the disputed corner.



(i) I, LaVerne H. Mosher
 (type or print name) certify that the corner location on this record was determined by me or under my direction and control and that this U.S. Public Land Survey Monument Record is correct and complete to the best of my knowledge and belief.



LaVerne H. Mosher
 Signature

MAY 14, 1993
 Date

Index No. K-13