

U.S. PUBLIC LAND SURVEY MONUMENT RECORD

NOTE: THIS FORM IS INTENDED AND DESIGNED TO FULFILL ALL REQUIREMENTS OF WISCONSIN ADMINISTRATIVE CODE, CHAPTER A-E 7.08, U.S. PUBLIC LAND SURVEY MONUMENT RECORD (3)(a)(b)(c)(d)(e)(f)(g)(h)(i). ADDITIONAL SHEETS MAY BE NECESSARY TO CONFORM TO SAID REQUIREMENTS.

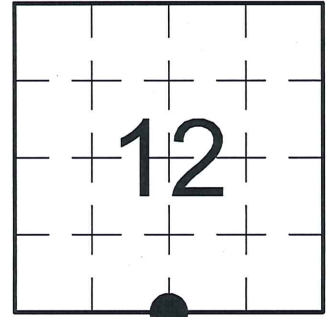
T 31 N, R 8 E

(a) CORNER LOCATION:

SOUTH QUARTER CORNER, SECTION 12
 TOWNSHIP 31 NORTH
 RANGE 8 EAST
 TOWN OF PINE RIVER
 LINCOLN COUNTY
 WISCONSIN

(b) HISTORY OF ORIGINAL CORNER:

ORIGINAL SURVEYOR: A.G. & F.S. Ellis, Set post
 COMMENCING DATE: February 13, 1852
 COMPLETION DATE: February 25, 1852
 ORIGINAL BEARING TREES:
 16" Linn; N 37° E; 39 links
 10" Linn; S 66° E; 14 links



(f)(g)(h) DESCRIPTION OF MONUMENT FOUND AT THIS CORNER AND IF IT WAS ACCEPTED. STATE ALL EVIDENCE (MATERIAL, TESTIMONIAL, OCCUPATIONAL, PLATS, RECORDS, OTHER MONUMENTS) USED AS A BASIS FOR ESTABLISHING LOCATION. IF RE-ESTABLISHING THROUGH LOST CORNER PROPORTIONATE METHODS, INDICATE ALL MONUMENTS, DISTANCES, AND DIRECTIONS USED TO ESTABLISH. INDICATE TYPE OF MONUMENTS FOUND OR SET.

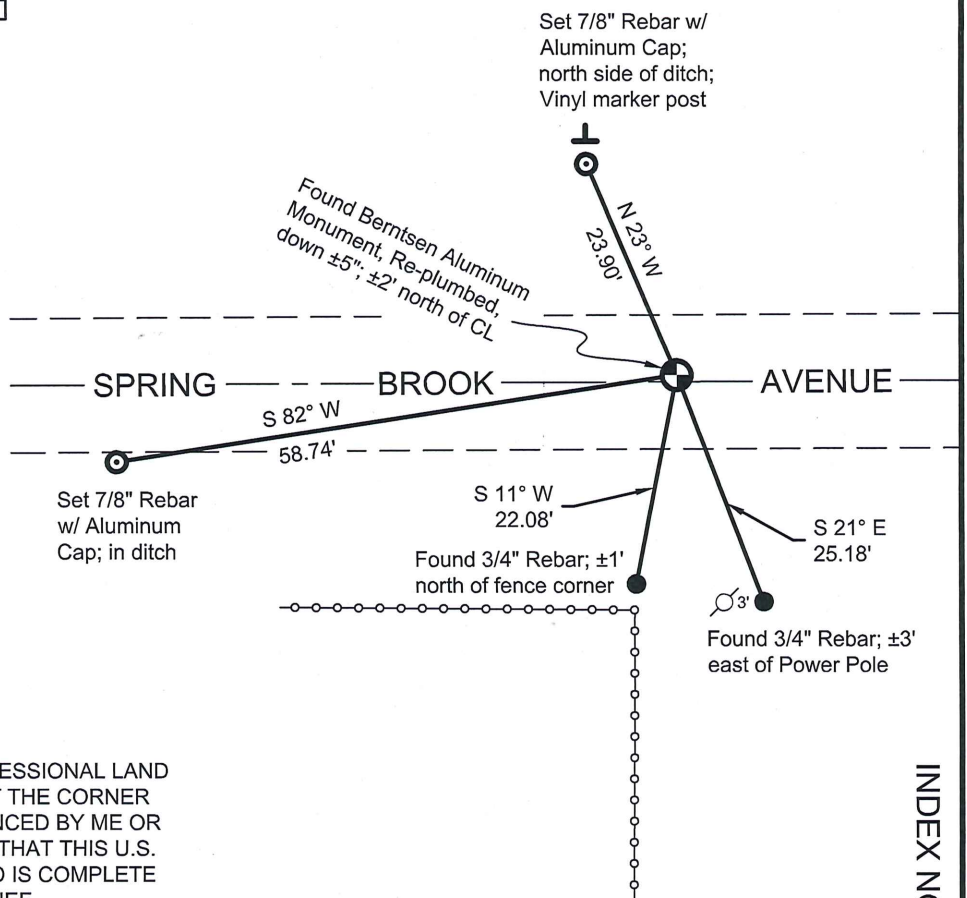
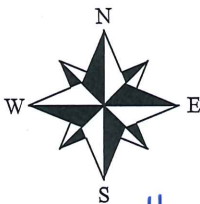
08/13/1979 - S. Schwark, RLS-1205, found a broken Granite Monument when excavating with a backhoe operated by A. Wyland. He removed the Stone and set a Berntsen Aluminum Monument in place of the Stone. He set reference ties to perpetuate the corner location.

08/07/2013 - I, Anthony R. Dallman, PLS-2405, found the Berntsen Aluminum Monument tipped westerly, ±5" below the road surface. The 1979 southerly reference ties were found intact and their distances did not intersect at the tipped location of the Aluminum Monument. I plumbed the found Berntsen Aluminum Monument in place, set new reference ties and remeasured the existing ties to further perpetuate the corner location, as shown in the sketch below.

(c)(d)(e) PLAN VIEW OF THE CORNER WITH TIES TO AT LEAST FOUR WITNESSES. IF IN DISAGREEMENT WITH PREVIOUSLY ESTABLISHED CORNER, SHOW THE DISTANCES BETWEEN THE TWO CORNERS AND ALSO THE TIES TO THE DISPUTED CORNER.



- Tie bearings by hand-held compass.
- Tie distances by steel tape.



I, ANTHONY R. DALLMAN, WISCONSIN PROFESSIONAL LAND SURVEYOR, S-2405, HEREBY CERTIFY THAT THE CORNER LOCATION ON THIS RECORD WAS REFERENCED BY ME OR UNDER MY DIRECTION AND CONTROL AND THAT THIS U.S. PUBLIC LAND SURVEY MONUMENT RECORD IS COMPLETE TO THE BEST OF MY KNOWLEDGE AND BELIEF.

Anthony R. Dallman 7/27/15
 ANTHONY R. DALLMAN, PLS S-2405

INDEX NO. 1-23

CERTIFIED LAND CORNER RESTORATION

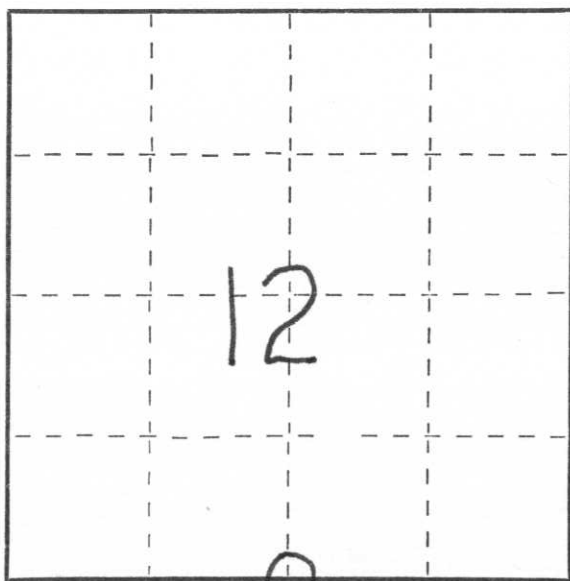
Index No. I-23

State of Wisconsin }
County of Lincoln } ss.

I Sheridan D. Schwark, do hereby certify that on the 7th day of June, 19 79, I found evidence of the south one-quarter corner of Section 12 Township 31, North, Range 8 East, Fourth, Principal Meridian, as described hereon; and that from this evidence I established a new monument and accessories as described hereon to perpetuate the original location of this corner.

Resident witnesses:

.....
.....
.....



○ = Corner monument restored.

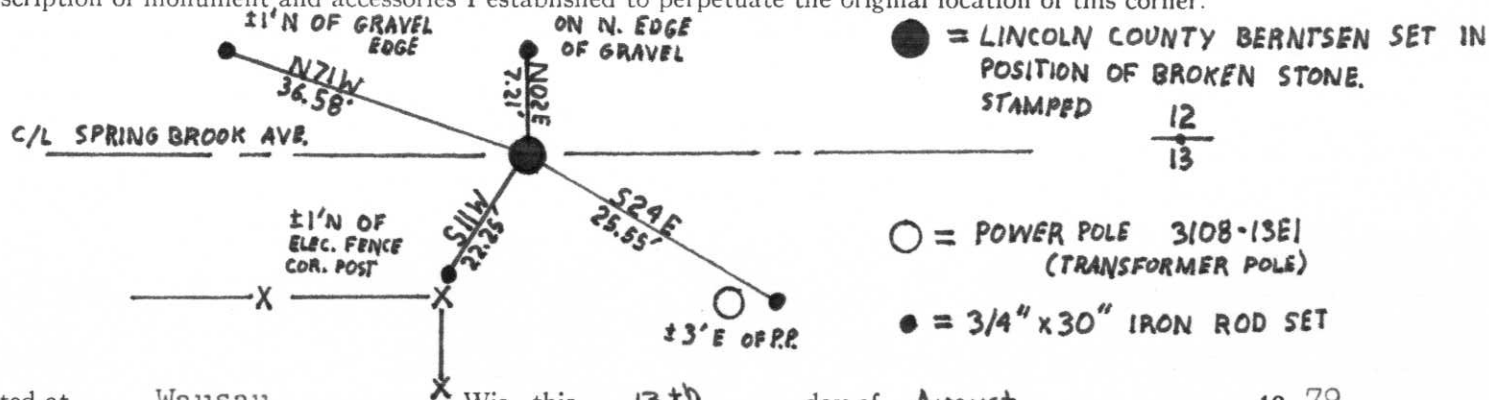
History of original corner establishment:

Date: July 1852
Surveyor: A.G. & F.S. Ellis
Monument: Wood Post
Witnesses: 16" Linn N37E 39 links
 10" Linn S66E 14 links

Description of corner evidence found:

We found a broken granite monument when excavating with a backhoe operated by A. Wyland Jr. We removed the stone.

Description of monument and accessories I established to perpetuate the original location of this corner.



Dated at Wausau, Wis., this 13th day of August, 19 79.

Signature Sheridan D. Schwark Title Registered Land Surveyor Registration No. S-1205
(County Surveyor, Registered Land Surveyor, or other duly authorized official)

Office of Register of Deeds, County of _____, I hereby certify that the within instrument was filed in this office for record on the _____ day of _____, 19 _____ at _____ o'clock _____ M.

.....
(Register of Deeds)

By _____ Deputy