

LINCOLN COUNTY U.S. PUBLIC LAND SURVEY MONUMENT LOCATION RECORD

SECTION 8
TOWNSHIP 31 N
RANGE 8 E

1-7

NO.

LANDMARK BENCHMARK _____
CORNER IDENTITY: S1/4 CORNER SEC. 8 (BERNTSEN MONUMENT)

FOUND
SET
RESET
RE-TIED

LINCOLN COUNTY COORDINATE: N: 121444.8610
E: 436623.6530

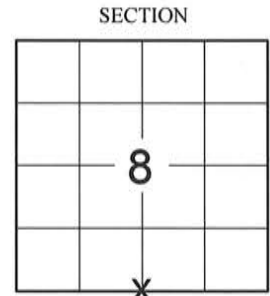
ELEVATION-(FEET): _____ DATUM: _____

WEATHER: CLEAR AND SUNNY

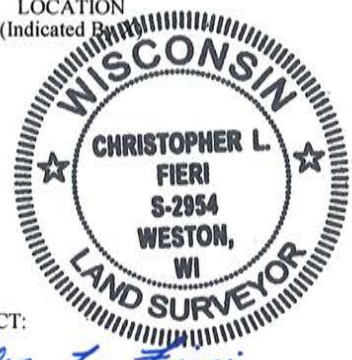
DATE OF SURVEY: 9/12/2014 TEMPERATURE: 65 °F

SURVEY PARTY: KEITH WALKOWSKI AND CHRIS FIERI

PINE RIVER
CITY, VILLAGE, TOWN



LOCATION
(Indicated By)



BASIS FOR MONUMENT LOCATION:

(DESCRIBE METHOD OF SURVEY AND CORNER AUTHENTICATION)

9/27/1995 - E. Abendroth searched for the corner monument and determined it had been destroyed by highway construction cut. State of Wisconsin Project Number 7069 indicated that the corner was 18 feet South of the centerline of Highway "64". He set corner on the centerline of Pleasant View Road and on line with right-of-way markers to the South 18 feet South of the centerline of Highway "64". Set four (4) witness monuments to perpetuate the corner location.

6/12/2012 - A. Dallman recovered all four (4) witness monuments from the previous corner restoration form in good condition. No monument was in place at the corner. He set a Berntsen Monument at the intersection of ties which fell 3.10 feet South of the edge of pavement and 4 inches below the gravel shoulder surface.

9/15/2014 - I visited the corner location prior to the resurfacing of Highway "64" and recovered the Berntsen Monument of Record. Also recovered all four (4) witness monuments from the previous corner restoration form. Distances checked well. Set four (4) Berntsen SSDR-130 witness monuments and returned after construction to confirm that the monument at the corner position had not been disturbed.

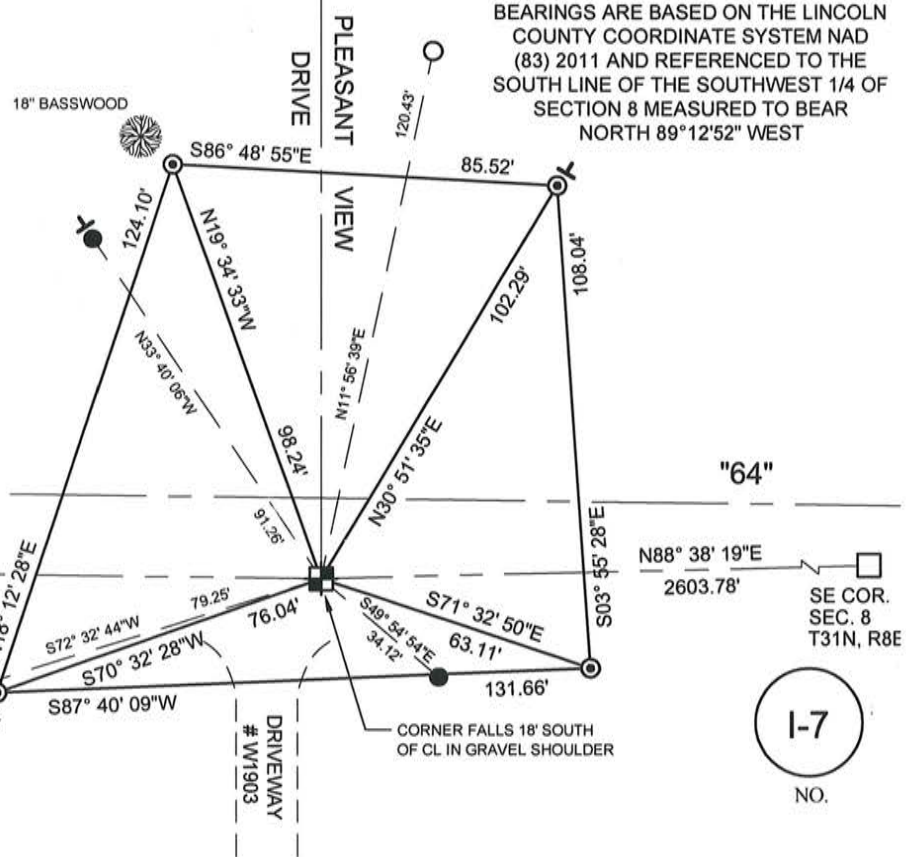
CERTIFIED CORRECT:

Christopher L. Fieri
CHRISTOPHER L. FIERI S-2954
Registered Land Surveyor
DATE: 11-18-2014

TIE SKETCH:

- BERNTSEN CAST IRON MONUMENT FOUND
- BERNTSEN SSDR-130 MONUMENT SET
- 3/4" REBAR FOUND
- 7/8" REBAR WITH LINCOLN COUNTY CAP FOUND
- VINYL T-POST SET

RECEIVED BY LINCOLN COUNTY
SURVEYOR THIS 4TH DAY
OF December 2014
Tommy Dall
COUNTY SURVEYOR



BEARINGS ARE BASED ON THE LINCOLN COUNTY COORDINATE SYSTEM NAD (83) 2011 AND REFERENCED TO THE SOUTH LINE OF THE SOUTHWEST 1/4 OF SECTION 8 MEASURED TO BEAR NORTH 89°12'52" WEST

SW CORNER
SEC. 8, T31N, R8E

SE COR.
SEC. 8
T31N, R8E

FIELD BOOK NO. 41 PAGE NO. 18



COMPANY RIVERSIDE LAND SURVEYING LLC

1-7

NO.

Attachment to Tie Sheet I-7 T31N, R8E

Visited this corner on June 6, 2012 and found all 4 Reference Monuments in good condition but no Monument at the Corner position. The Reference Monuments cross well and set a Berntsen Monument at that position, down 4" and 3.10' South of pavement. The Northeast Reference monument is called to be the Southwest Corner of CSM 810, it should be CSM 841 and the tie distance shown on the Tie Sheet is 120.63' and the CSM shows it as 120.36'. The distance shown on CSM 841 (120.36') crosses well with the other 3 Reference Monument ties. Field Book #5 Page 144.

Anthony Dallman
Lincoln County Surveyor



I-7

U.S. PUBLIC LAND SURVEY MONUMENT RECORD

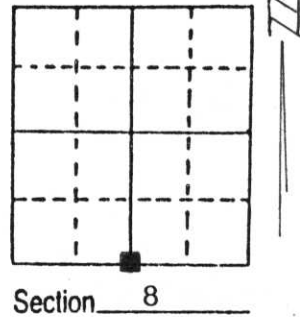
Note: This form is intended and designed to fulfill all requirements of Wisconsin Administrative Code, Chapter A-E 5.02, U.S. Public Land Survey Monument Record (3) (a) (b) (c) (d) (e) (f) (g) (h) (i). An additional sheet may be added if necessary to conform with said requirements.

(a) Corner location: Township 31 North

Range 8 East

Town/City/Village PINE RIVER

County LINCOLN



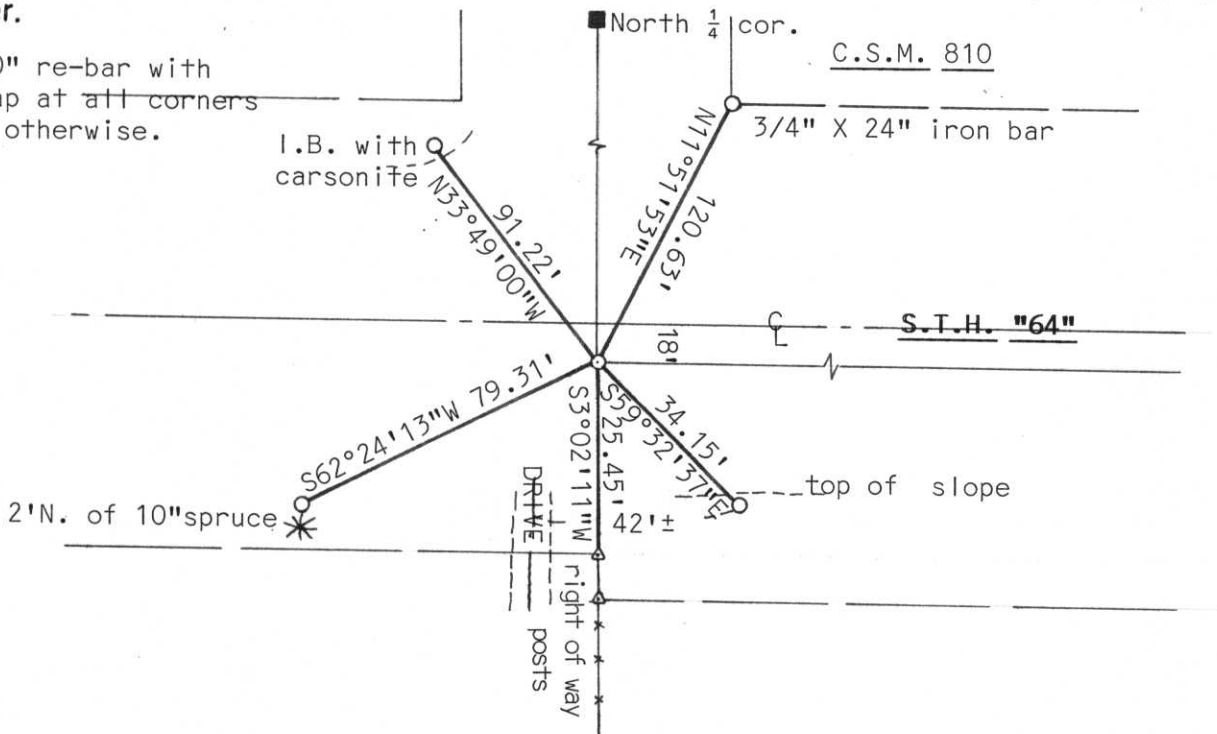
(b) (f) (g) (h) Description of monument found at this corner and if it was accepted, state all evidence (material, testimonial, occupational, plats, records, other monuments) used as a basis for accepting. If not accepted or if nothing was found, state evidence used as basis for establishing location. If reestablished through lost corner proportionate methods, indicate all monuments, distances and directions used to establish.

Use State of Wisconsin project no. 7069 plan. Plan indicated that the centerline of Highway 64 was 18 feet north of the corner. We searched the area and determined that the corner would have been removed in highway construction cut. Set corner on centerline of Pleasant View Road and on right of way markers 18 feet south of road centerline. Tied corner.

**RECEIVED AT LINCOLN COUNTY
COURTHOUSE THIS 28th DAY
OF Sept. 19 95
Pat Priebe
TAX DESCRIPTION OFFICE**

(c) (d) (e) Plan view of corner with ties to at least 4 witness monuments. If in disagreement with previously established corner, show the distances between the two corners and also indicate the ties to the disputed corner.

Set 3/4" X 30" re-bar with Lincoln Co. cap at all corners unless noted otherwise.



(i) I, Edwin R. Abendroth RLS No. S-798
(type or print name) certify that the corner location on this record was determined by me or under my direction and control and that this U.S. Public Land Survey Monument Record is correct and complete to the best of my knowledge and belief.

Edwin R. Abendroth 9-27-95
Signature Date



Index No. I-7









