

LINCOLN COUNTY U.S. PUBLIC LAND SURVEY MONUMENT LOCATION RECORD

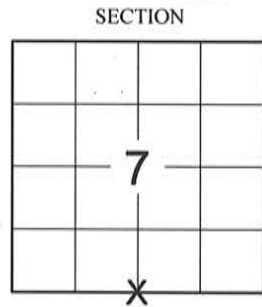
SECTION 7
TOWNSHIP 31 N
RANGE 8 E

1-3
NO.

LANDMARK BENCHMARK
CORNER IDENTITY: SOUTH 1/4 CORNER SECTION 7 (SNM-1 NAIL)
FOUND
SET
RESET
RE-TIED

PINE RIVER
CITY, VILLAGE, TOWN

LINCOLN COUNTY COORDINATE: N: 121529.3410
E: 431366.0910



WEATHER: CLEAR AND SUNNY
DATE OF SURVEY: 9/12/2014 TEMPERATURE: 65 °F
SURVEY PARTY: KEITH WALKOWSKI AND CHRIS FIERI

LOCATION
(Indicated By)



BASIS FOR MONUMENT LOCATION: (DESCRIBE METHOD OF SURVEY AND CORNER AUTHENTICATION)

2/1852 - A.G. Ellis established the original corner.

6/21/1939 - Wisconsin DOT right-of-way plat for State Highway "64" shows a stone monument in place 6.5 feet South of the center line of Highway "64". (Map Number 7069)

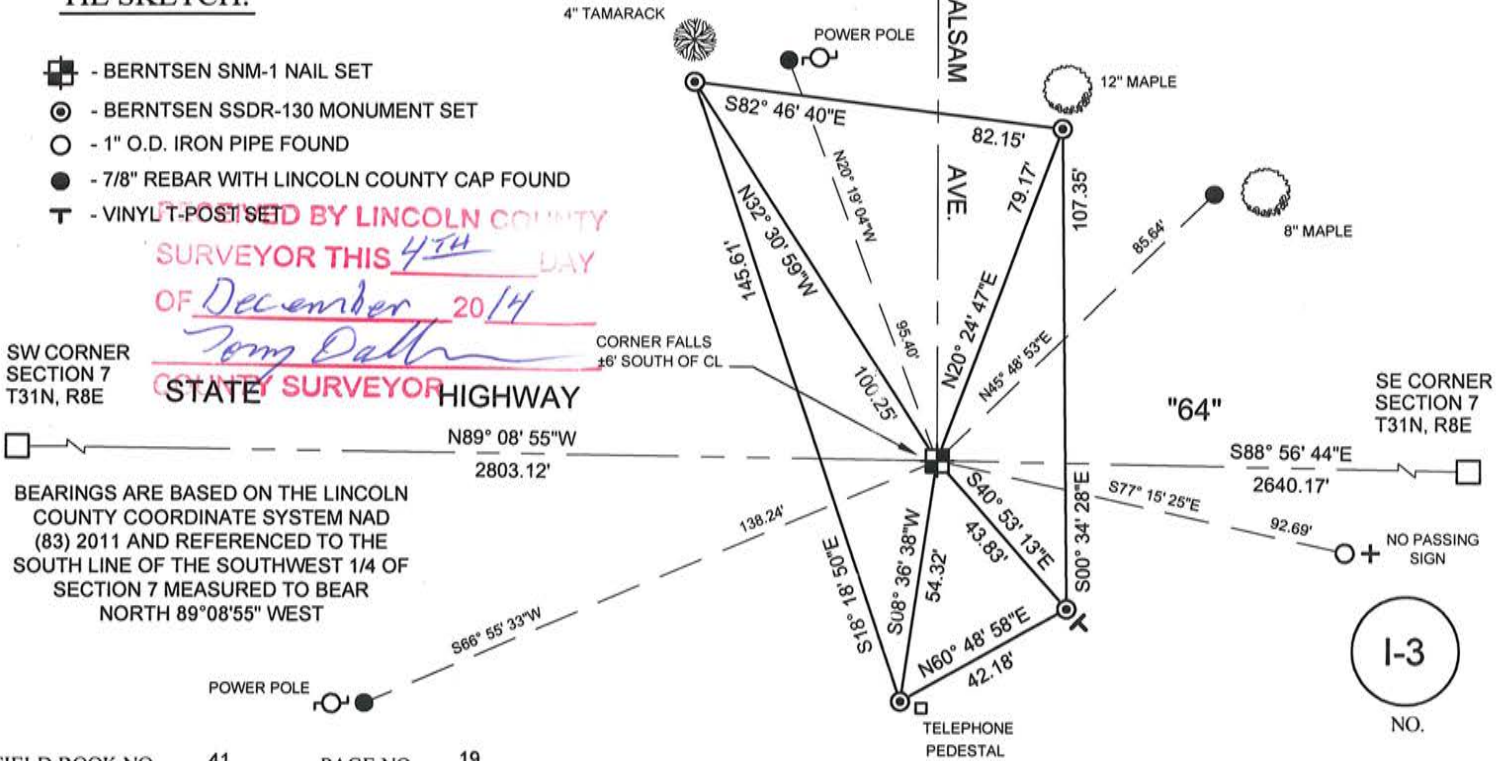
8/9/1994 - E. Abendroth re-established the corner using the State Highway "64" right-of-way plan. He set a P.K. Nail at the corner location and five (5) witness monuments.

2/25/2009 - M. Hoglund searched for a corner monument and found nothing. He recovered one (1) witness monument from the previous corner restoration form. He re-established the corner using the found witness monument and found monuments from Certified Survey Map 842. He set a Survey Marker Nail at the corner and set witness monuments to perpetuate the corner location

9/15/2014 - I visited the corner location prior to the resurfacing of Highway "64" and recovered the shaft of the Survey Marker Nail of record. Also recovered all four (4) witness monuments from the previous corner restoration form. Distances checked well. Set four (4) Berntsen SSDR-130 witness monuments and returned after construction to set a Berntsen SNM-1 Nail at the corner location.

CERTIFIED CORRECT:
Christopher L. Fieri
CHRISTOPHER L. FIERI S-2954
Registered Land Surveyor
DATE: 11-20-2014

TIE SKETCH:



1-3
NO.

U.S. PUBLIC LAND SURVEY MONUMENT RECORD

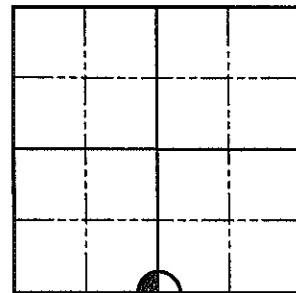
NOTE: This form is intended and designed to fulfill all requirements of Wisconsin Administrative Code, Chapter A-E 7 .08 U.S. Public Land Survey Monument Record (3)(a)(b)(c)(d)(e)(f)(g)(h)(i). An additional sheet may be added if necessary to conform with said requirements.

(a) Corner location: Township 31 North

Range 8 East

Town of Pine River

County of Lincoln



Section 7

(b)(f)(g)(h) Description of monument found at this corner and if it was accepted, state all evidence (material, testimonial, occupation, plats, records, other monuments) used as a basis for accepting. If not accepted or if nothing was found, state evidence used as a basis for establishing location. If reestablished through lost corner proportionate methods, indicate all monuments, distances and directions used to establish. Indicate type of monument found or set and sign post.

February 1852 – A.G. Ellis set original 1/4 Section post a Hemlock 6" is marked and Birch 9", N44°E, 6 links;

June 21, 1939 – Wisconsin Department of Transportation right-of-way Plat for State Highway "64" shows a stone monument in place 6.5' South of the center line of State Highway "64". (Map Number 7069)

August 9, 1994 – Adwin R. Abendroth reestablished the corner using the State Highway "64" right-of-way plan. (Map Number 7069). He set a P.K. Nail and 5 reference monuments.

May 31, 1995 – Gary R. Krueger shows he found a P.K. Nail at the corner location per Certified Survey Map Number 842.

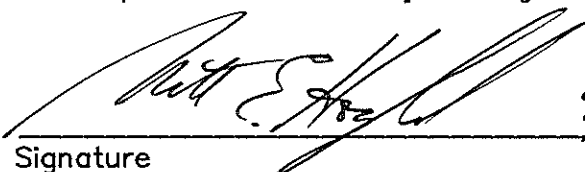
April 21, 2003 – Gene J. Wadzinski shows he found a P.K. Nail at the corner location per Certified Survey Map Number 1685

February 25, 2009 – Matthew E. Hoglund searched for corner and found nothing. We found only 1 reference monument set by Abendroth in 1994. We reestablished the corner using the 1 reference monument and found monuments from Certified Survey Map Number 842. We set a survey nail stamped "SURVEY MARK" and set new reference monuments as shown on Sheet 2 hereof.

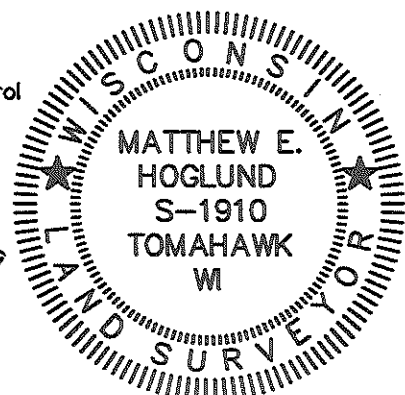
(c)(d)(e) Plan view of corner with ties to at least 4 witness monuments. If in disagreement with previously established corner, show the distances between the two corners and also indicate the ties to the disputed corner.

See Sheet 2 hereof

(i) I, Matthew Hoglund, certify that the corner location on this record was determined by me under my direction and control and that this U.S. Public Land Survey Monument is correct and complete to the best of my knowledge and belief.


Signature

9/22/09
Date



Index No. 1-3

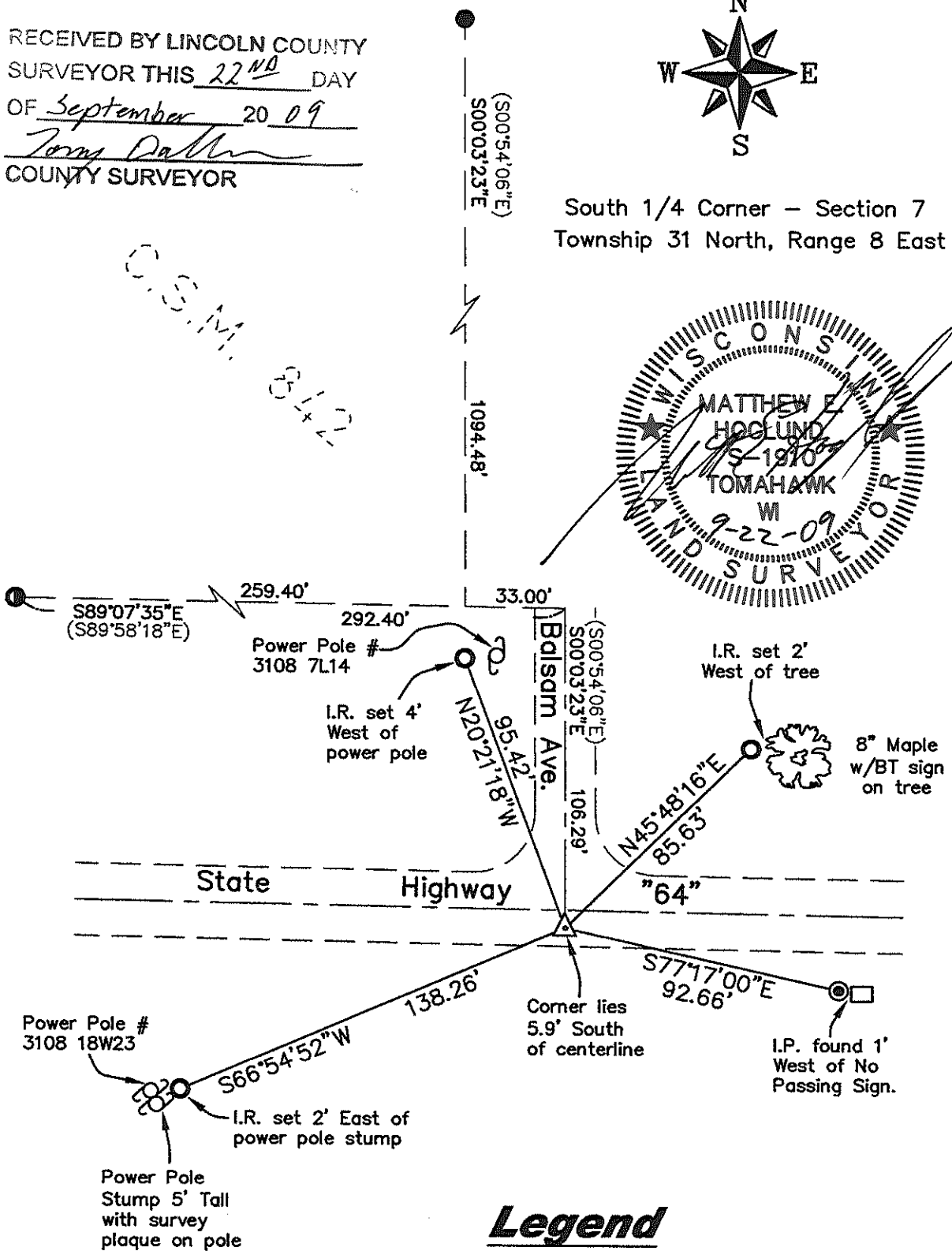
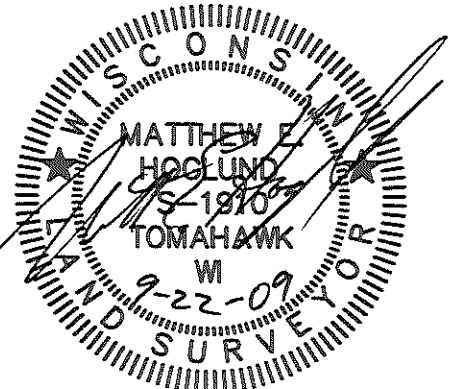
U.S. PUBLIC LAND SURVEY MONUMENT RECORD

RECEIVED BY LINCOLN COUNTY
 SURVEYOR THIS 22ND DAY
 OF September 20 09
Tom Dallen
 COUNTY SURVEYOR



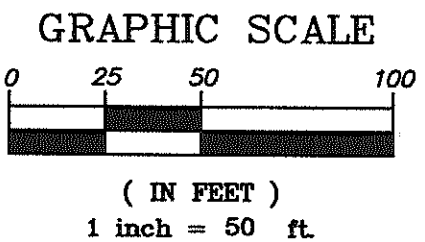
South 1/4 Corner – Section 7
 Township 31 North, Range 8 East

C.S.M. 3112



Legend

- △ Set Survey Nail Stamped "SURVEY MARK"
- Set 7/8" x 30" Iron Rebar With Aluminum Cap
- ⊙ Found 3/4" Iron Pipe
- Found 3/4" Iron Rebar
- ⦿ Found 1" Iron Pipe
- ⊕ Existing Power Pole
- (46.57") Record Dimensions



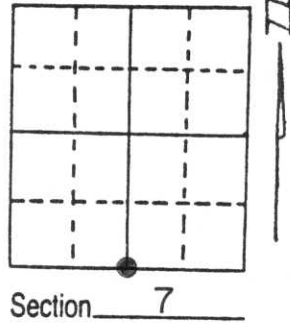
U.S. PUBLIC LAND SURVEY MONUMENT RECORD

Note: This form is intended and designed to fulfill all requirements of Wisconsin Administrative Code, Chapter A-E 5.02, U.S. Public Land Survey Monument Record (3) (a) (b) (c) (d) (e) (f) (g) (h) (i). An additional sheet may be added if necessary to conform with said requirements.

(a) Corner location: Township 31 North
 Range 8 East

Town/City/Village TOWN OF PINE RIVER

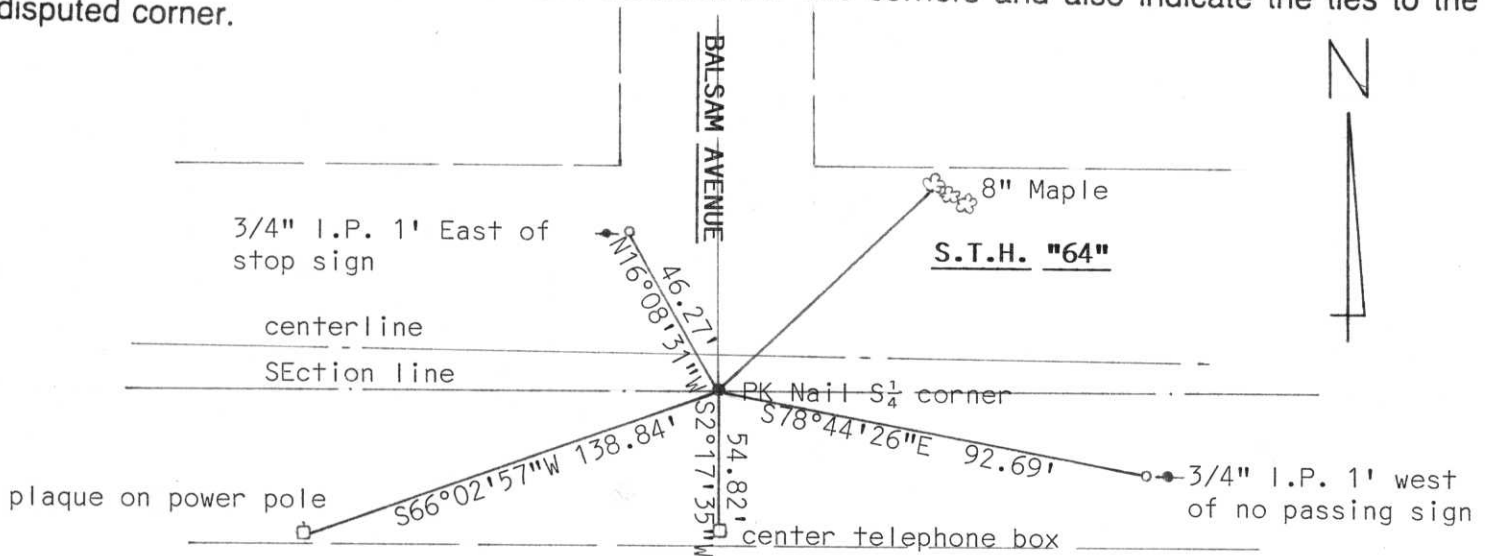
County LINCOLN



(b) (f) (g) (h) Description of monument found at this corner and if it was accepted, state all evidence (material, testimonial, occupational, plats, records, other monuments) used as a basis for accepting. If not accepted or if nothing was found, state evidence used as basis for establishing location. If reestablished through lost corner proportionate methods, indicate all monuments, distances and directions used to establish.

State Hwy Plan S.T.H. "64" No. 7069 Located the Section line by stationing and related to centerline of highway. Highplans were used to reestablish this corner. We considered this to be the best evidence available. Set corner.

(c) (d) (e) Plan view of corner with ties to at least 4 witness monuments. If in disagreement with previously established corner, show the distances between the two corners and also indicate the ties to the disputed corner.



(i) I, Edwin R. Abendroth RLS No. S-798
 (type or print name) certify that the corner location on this record was determined by me or under my direction and control and that this U.S. Public Land Survey Monument Record is correct and complete to the best of my knowledge and belief.



Edwin R. Abendroth August 9, 1994
 Signature Date

Index No. I-3









