

# U.S. PUBLIC LAND SURVEY MONUMENT RECORD

NOTE: THIS FORM IS INTENDED AND DESIGNED TO FULFILL ALL REQUIREMENTS OF WISCONSIN ADMINISTRATIVE CODE, CHAPTER A-E 7.08, U.S. PUBLIC LAND SURVEY MONUMENT RECORD (3)(a)(b)(c)(d)(e)(f)(g)(h)(i). ADDITIONAL SHEETS MAY BE NECESSARY TO CONFORM TO SAID REQUIREMENTS.

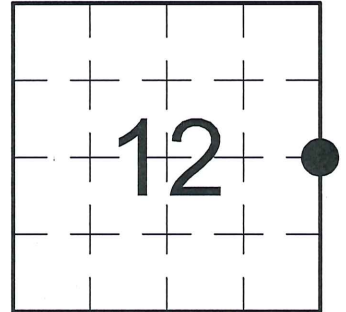
T 31 N, R 8 E

**(a) CORNER LOCATION:**

EAST QUARTER CORNER, SECTION 12  
 TOWNSHIP 31 NORTH  
 RANGE 8 EAST  
 TOWN OF PINE RIVER  
 LINCOLN COUNTY  
 WISCONSIN

**(b) HISTORY OF ORIGINAL CORNER:**

ORIGINAL SURVEYOR: James M. Marsh, Set post  
 COMMENCING DATE: July 8, 1851  
 COMPLETION DATE: July 28, 1851  
 ORIGINAL BEARING TREES:  
 8" Birch; S 70° E; 38 links  
 14" Birch; S 35° W; 6 links  
 12" Hemlock; N 1° W; 8 links  
 8" Hemlock; N 28° E; 26 links

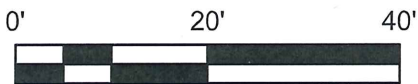


**(f)(g)(h) DESCRIPTION OF MONUMENT FOUND AT THIS CORNER AND IF IT WAS ACCEPTED. STATE ALL EVIDENCE (MATERIAL, TESTIMONIAL, OCCUPATIONAL, PLATS, RECORDS, OTHER MONUMENTS) USED AS A BASIS FOR ESTABLISHING LOCATION. IF RE-ESTABLISHING THROUGH LOST CORNER PROPORTIONATE METHODS, INDICATE ALL MONUMENTS, DISTANCES, AND DIRECTIONS USED TO ESTABLISH. INDICATE TYPE OF MONUMENTS FOUND OR SET.**

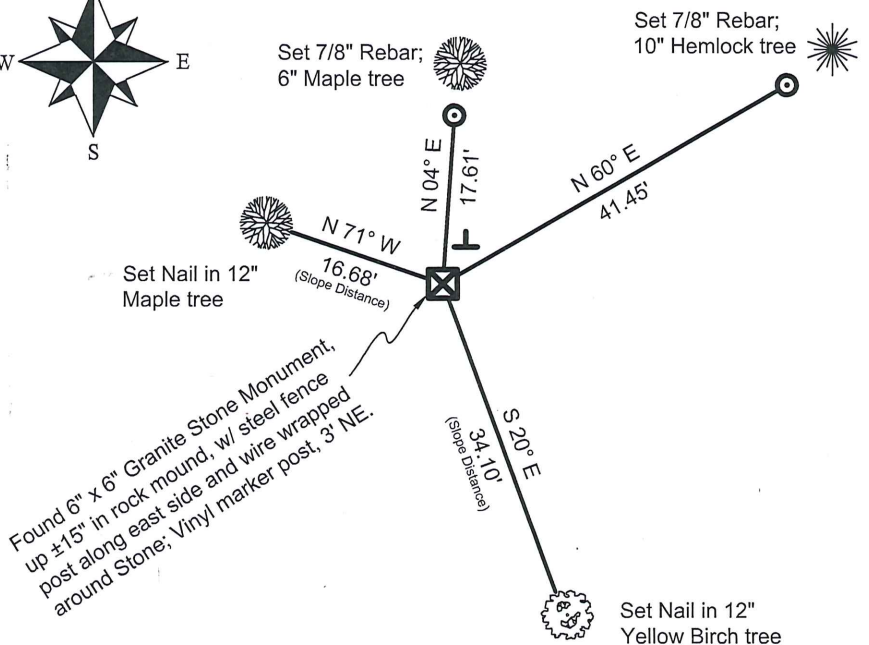
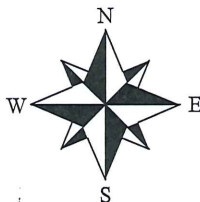
08/13/1979 - S. Schwark, RLS-1205, found a 6" x 6" red Granite Stone Monument slightly tipped with its top 15" above grade. He mounded soil around the Stone and straightened it. He made reference ties to perpetuate the corner location.

11/28/2012 - I, Anthony R. Dallman, PLS-2405, found the 6" x 6" Granite Stone Monument, protruding ±15" above the ground surface in a mound with rocks, with a steel fence post on the east side and wire wrapped around the Stone. The old fence shown on the 1979 tie sheet is down and mostly gone. I set new reference ties and remeasured one existing tie to further perpetuate the corner location, as shown in the sketch below.

**(c)(d)(e) PLAN VIEW OF THE CORNER WITH TIES TO AT LEAST FOUR WITNESSES. IF IN DISAGREEMENT WITH PREVIOUSLY ESTABLISHED CORNER, SHOW THE DISTANCES BETWEEN THE TWO CORNERS AND ALSO THE TIES TO THE DISPUTED CORNER.**



- Bearings by hand-held compass.  
 - Distances by steel tape.



I, ANTHONY R. DALLMAN, WISCONSIN PROFESSIONAL LAND SURVEYOR, S-2405, HEREBY CERTIFY THAT THE CORNER LOCATION ON THIS RECORD WAS REFERENCED BY ME OR UNDER MY DIRECTION AND CONTROL AND THAT THIS U.S. PUBLIC LAND SURVEY MONUMENT RECORD IS COMPLETE TO THE BEST OF MY KNOWLEDGE AND BELIEF.

*Anthony R. Dallman* 8/04/15  
 ANTHONY R. DALLMAN, PLS S-2405

CERTIFIED LAND CORNER RESTORATION

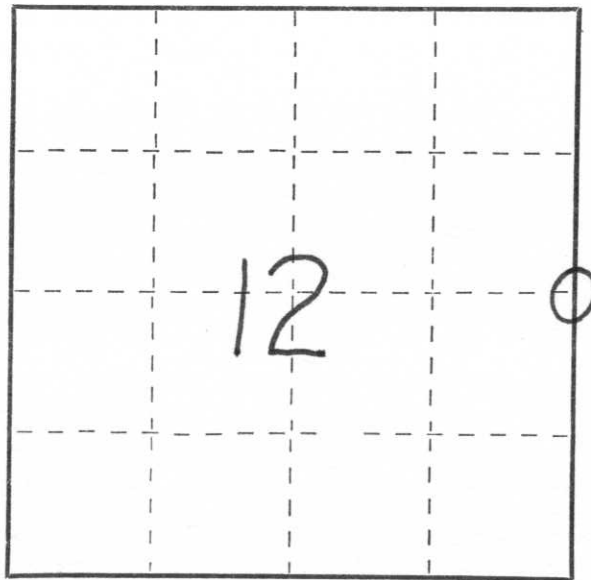
Index No. G-25

State of Wisconsin }  
County of Lincoln } ss.

I Sheridan D. Schwark, do hereby certify that on the 11th day of June, 1979, I found evidence of the east one-quarter corner of Section 12 Township 31, North, Range 8 East, Fourth, Principal Meridian, as described hereon; and that from this evidence I established a new monument and accessories as described hereon to perpetuate the original location of this corner.

Resident witnesses:

.....  
.....  
.....



○ = Corner monument restored.

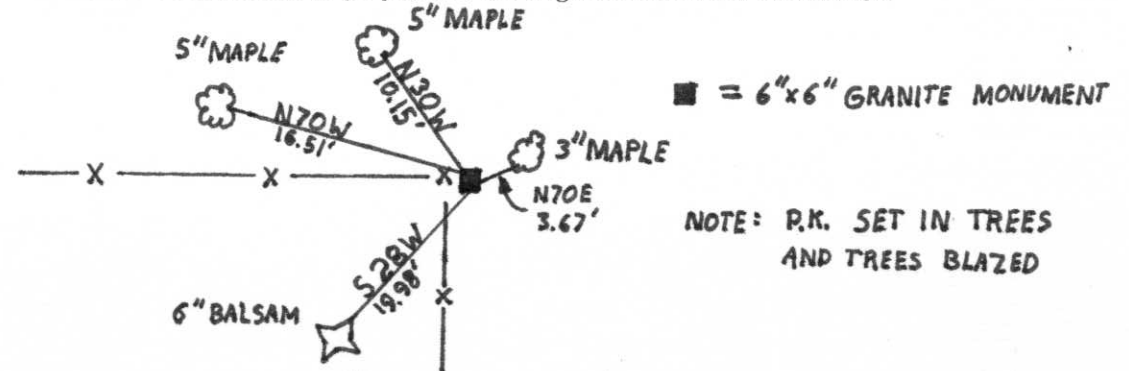
History of original corner establishment:

Date: June 1851  
Surveyor: Marsh  
Monument: Wood Post  
Witnesses: 8" Birch S70E 38 links  
14" Birch S35W 6 links  
12" Hemlock N01W 8 links  
8" Hemlock N28E 26 links

Description of corner evidence found:

We found a 6"x6" red granite monument slightly tipped with its top 15" above grade. We mounded soil around the stone and straightened it.

Description of monument and accessories I established to perpetuate the original location of this corner.



Dated at Wausau, Wis., this 13<sup>th</sup> day of August, 1979.

Signature Sheridan D. Schwark Title Registered Land Surveyor Registration No. S-1205  
(County Surveyor, Registered Land Surveyor, or other duly authorized official)

Office of Register of Deeds, County of \_\_\_\_\_, I hereby certify that the within instrument was filed in this office for record on the \_\_\_\_\_ day of \_\_\_\_\_, 19\_\_\_\_ at \_\_\_\_\_ o'clock \_\_\_\_\_ M.

.....  
(Register of Deeds)

By \_\_\_\_\_ Deputy