

U.S. PUBLIC LAND SURVEY MONUMENT RECORD

NOTE: THIS FORM IS INTENDED AND DESIGNED TO FULFILL ALL REQUIREMENTS OF WISCONSIN ADMINISTRATIVE CODE, CHAPTER A-E 7.08, U.S. PUBLIC LAND SURVEY MONUMENT RECORD (3)(a)(b)(c)(d)(e)(f)(g)(h)(i). ADDITIONAL SHEETS MAY BE NECESSARY TO CONFORM TO SAID REQUIREMENTS.

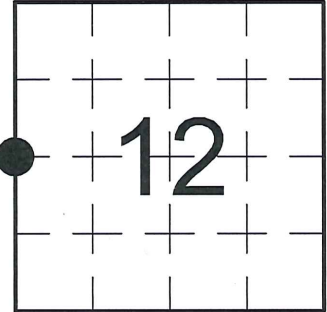
T 31 N, R 8 E

(a) CORNER LOCATION:

WEST QUARTER CORNER, SECTION 12
 TOWNSHIP 31 NORTH
 RANGE 8 EAST
 TOWN OF PINE RIVER
 LINCOLN COUNTY
 WISCONSIN

(b) HISTORY OF ORIGINAL CORNER:

ORIGINAL SURVEYOR: A.G. & F.S. Ellis, Set post
 COMMENCING DATE: February 13, 1852
 COMPLETION DATE: February 25, 1852
 ORIGINAL BEARING TREES:
 14" Birch; N 42° W; 17 links
 15" Birch; N 27° E; 33 links



(f)(g)(h) DESCRIPTION OF MONUMENT FOUND AT THIS CORNER AND IF IT WAS ACCEPTED. STATE ALL EVIDENCE (MATERIAL, TESTIMONIAL, OCCUPATIONAL, PLATS, RECORDS, OTHER MONUMENTS) USED AS A BASIS FOR ESTABLISHING LOCATION. IF RE-ESTABLISHING THROUGH LOST CORNER PROPORTIONATE METHODS, INDICATE ALL MONUMENTS, DISTANCES, AND DIRECTIONS USED TO ESTABLISH. INDICATE TYPE OF MONUMENTS FOUND OR SET.

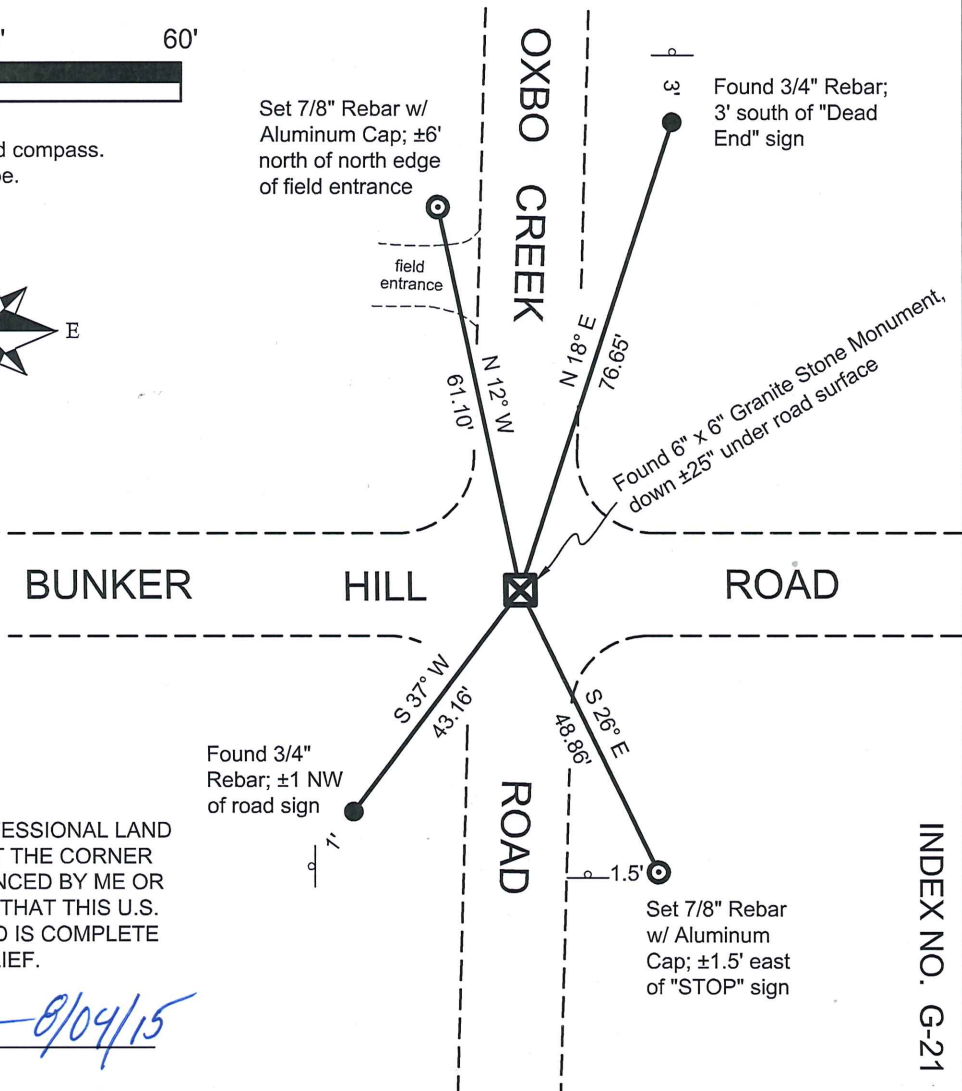
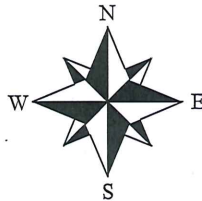
08/13/1979 - S. Schwark, RLS-1205, excavated with a backhoe and found a Granite Stone Monument at the road intersection, ±3' below the road surface. He left the Stone in place and set a Berntsen Aluminum Monument centered over the Stone. He made reference ties to perpetuate the corner location.

10/22/2012 - I, Anthony R. Dallman, PLS-2405, found the existing Berntsen Monument to be broken and unusable. I removed the Berntsen Monument and dug down to the previous 6" x 6" Granite Stone Monument, down ±25". I set new reference ties and remeasured existing ties based on the Stone Monument location, as shown in the sketch below.

(c)(d)(e) PLAN VIEW OF THE CORNER WITH TIES TO AT LEAST FOUR WITNESSES. IF IN DISAGREEMENT WITH PREVIOUSLY ESTABLISHED CORNER, SHOW THE DISTANCES BETWEEN THE TWO CORNERS AND ALSO THE TIES TO THE DISPUTED CORNER.



- Bearings by hand-held compass.
 - Distances by steel tape.



I, ANTHONY R. DALLMAN, WISCONSIN PROFESSIONAL LAND SURVEYOR, S-2405, HEREBY CERTIFY THAT THE CORNER LOCATION ON THIS RECORD WAS REFERENCED BY ME OR UNDER MY DIRECTION AND CONTROL AND THAT THIS U.S. PUBLIC LAND SURVEY MONUMENT RECORD IS COMPLETE TO THE BEST OF MY KNOWLEDGE AND BELIEF.

Anthony R. Dallman 8/04/15
 ANTHONY R. DALLMAN, PLS S-2405

INDEX NO. G-21

CERTIFIED LAND CORNER RESTORATION

Index No. G-21

State of Wisconsin }
 County of Lincoln } ss.

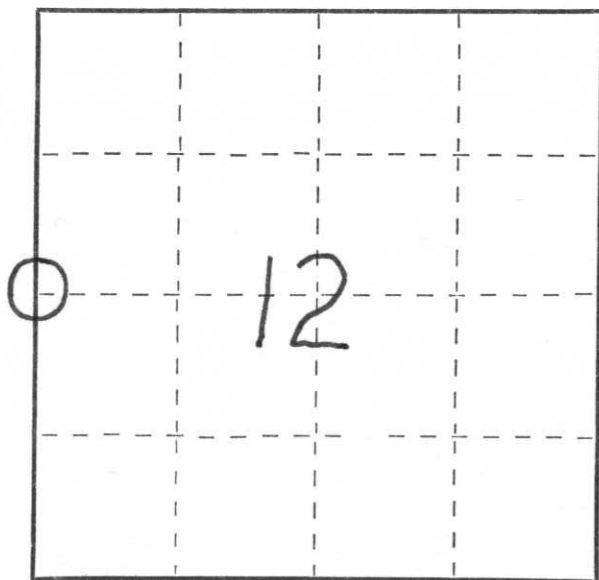
I Sheridan D. Schwark, do hereby certify that on the 7th day of June, 1979, I found evidence of the west one-quarter corner of Section 12 Township 31, North, Range 8 East, Fourth, Principal Meridian, as described hereon; and that from this evidence I established a new monument and accessories as described hereon to perpetuate the original location of this corner.

Resident witnesses:

.....

.....

.....



○ = Corner monument restored.

History of original corner establishment:

Date: July 1852
 Surveyor: A.G. & F.S. Ellis
 Monument: Wood Post
 Witnesses: 14" Birch N42W 17 links
 15" Birch N27E 33 links

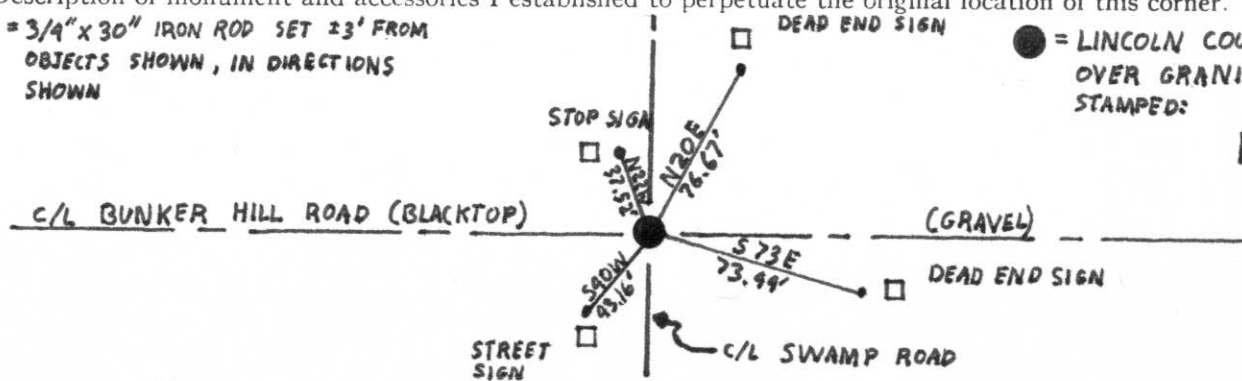
Description of corner evidence found:

We excavated with a backhoe operated by A. Wyland and found a granite monument at the road intersection. The stone was left in place about 3 feet below grade.

Description of monument and accessories I established to perpetuate the original location of this corner.

● = 3/4" x 30" IRON ROD SET 23' FROM OBJECTS SHOWN, IN DIRECTIONS SHOWN

● = LINCOLN COUNTY BERNTSEN SET OVER GRANITE MONUMENT. STAMPED:



Dated at Wausau, Wis., this 13th day of August, 19 79.

Signature Sheridan D. Schwark Title Registered Land Surveyor Registration No. S-1205
 (County Surveyor, Registered Land Surveyor, or other duly authorized official)

Office of Register of Deeds, County of _____, I hereby certify that the within instrument was filed in this office for record on the _____ day of _____, 19 _____ at _____ o'clock _____ M.

(Register of Deeds)

By _____ Deputy