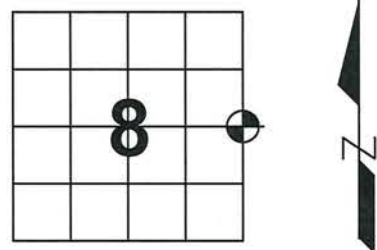


# U.S. PUBLIC LAND SURVEY MONUMENT RECORD

Note: This form is intended and designed to fulfill all requirements of Wisconsin Administrative Code, Chapter A-E 7.08, U.S. Public Land Survey Monument Record (3) (a) (b) (c) (d) (e) (f) (g) (h) (i). An additional sheet may be added if necessary to conform with said requirements.

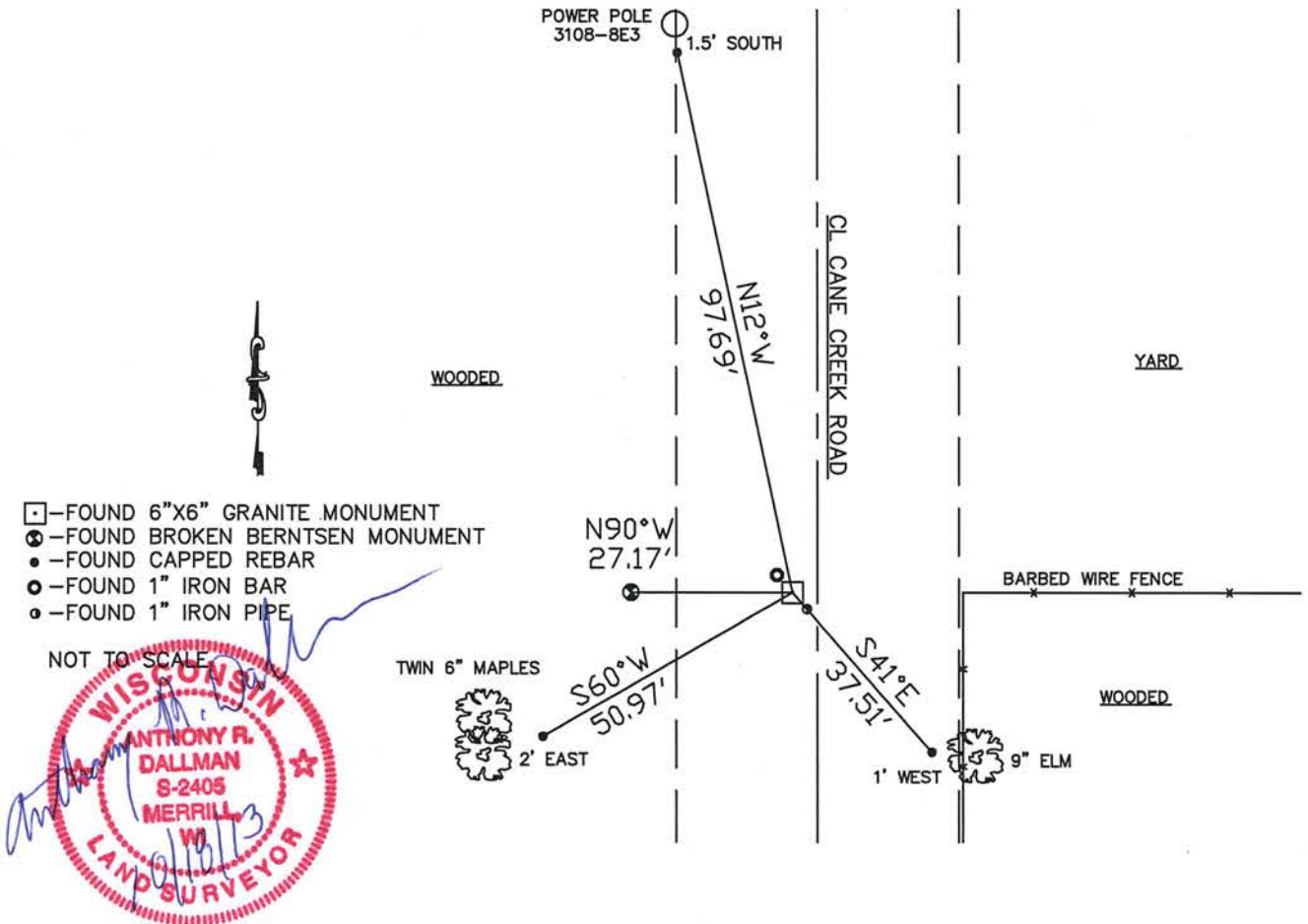
(a) Corner location: Township 31 North  
 Range 8 East  
 Town/City/Village Pine River  
 County Lincoln



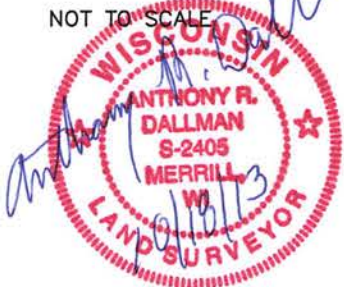
(b) (f) (g) (h) Description of monument found at this corner and if it was accepted, state all evidence (material, testimonial, occupational, plats, records, other monuments) used as basis for accepting. If not accepted or if nothing was found, state evidence used as basis for establishing location. If reestablished through lost corner proportionate methods, indicate all monuments, distances and directions used to establish.

- Feb. 1852 – Ellis, A. G.; Ellis, F.S. set Quarter Section post  
 Birch 10 S68°E 46 lks  
 Birch 12 S86°W 48 lks
- Sep. 1977 – Kelly, William F. Located 6"X6" Granite Monument in road. Set ties and 1.25" iron pipes on East and West sides of Granite.
- Sep. 1995 – Abendroth, Edwin R. set railroad spike per broken berntsen witness monument and B.T. Set new ties.
- June 2012 – Dallman, Anthony R. Found 6"X6" Granite Monument 3' West of CL Cain Creek Road, down 15" from road surface. Stone was leaning NE, reset plumb and reset iron bar on NW side. Existing iron pipe on SE side is down 8" from top of stone. 1995 ties were in good condition but did not cross well. Witnessed as shown below:

(c) (d) (e) Plan view of corner with ties to at least 4 witness monuments. If in disagreement with previously established corner, show the distance between the two corners and also indicate the ties to the disputed corner.



- - FOUND 6"X6" GRANITE MONUMENT
- ⊙ - FOUND BROKEN BERNTSEN MONUMENT
- - FOUND CAPPED REBAR
- - FOUND 1" IRON BAR
- - FOUND 1" IRON PIPE



(i) I, Anthony R. Dallman

(type or print name) certify that the corner location on this record was determined by me or under my direction and control and that this U.S. Public Land Survey Monument Record is correct and complete to the best of my knowledge and belief.

Anthony R. Dallman  
 Signature

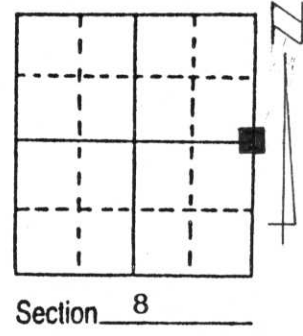
10/18/13  
 Date

Index No. G-9

# U.S. PUBLIC LAND SURVEY MONUMENT RECORD

Note: This form is intended and designed to fulfill all requirements of Wisconsin Administrative Code, Chapter A-E 5.02, U.S. Public Land Survey Monument Record (3) (a) (b) (c) (d) (e) (f) (g) (h) (i). An additional sheet may be added if necessary to conform with said requirements.

(a) Corner location: Township 31 North  
 Range 8 East  
 Town/City/Village PINE RIVER  
 County LINCOLN



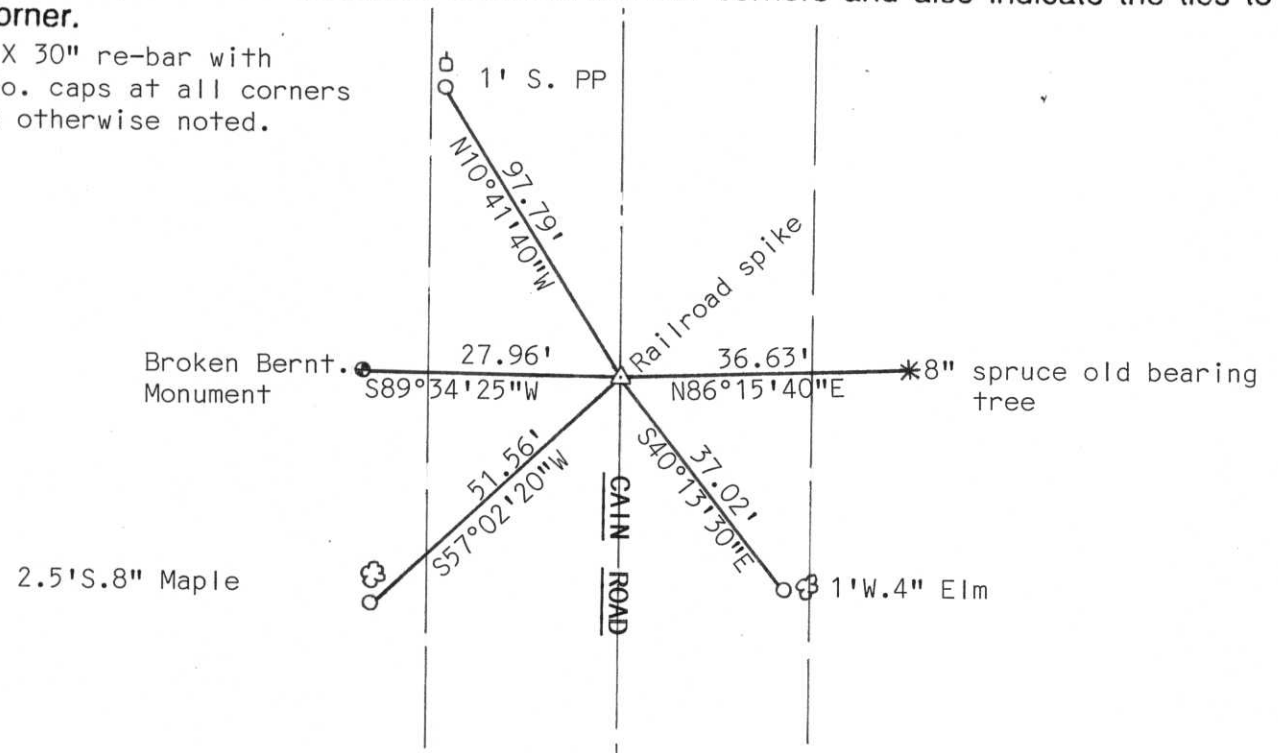
(b) (f) (g) (h) Description of monument found at this corner and if it was accepted, state all evidence (material, testimonial, occupational, plats, records, other monuments) used as a basis for accepting. If not accepted or if nothing was found, state evidence used as basis for establishing location. If reestablished through lost corner proportionate methods, indicate all monuments, distances and directions used to establish.

Used old Section corner tie sheet to locate witness corners. Berntsen Mon. was broken and tipped, straightened bottom 2/3 of monument and used also located one bearing tree and used. Set railroad spike at corner and tied.

**RECEIVED AT LINCOLN COUNTY  
 COURTHOUSE THIS 28th DAY  
 OF Sept. 19 95  
*Pat Priebe*  
 TAX DESCRIPTION OFFICE**

(c) (d) (e) Plan view of corner with ties to at least 4 witness monuments. If in disagreement with previously established corner, show the distances between the two corners and also indicate the ties to the disputed corner.

Set 3/4" X 30" re-bar with Lincoln Co. caps at all corners except as otherwise noted.



(i) I, Edwin R. Abendroth RLS No. S-798  
 (type or print name) certify that the corner location on this record was determined by me or under my direction and control and that this U.S. Public Land Survey Monument Record is correct and complete to the best of my knowledge and belief.

Edwin R. Abendroth 9-27-95  
 Signature Date

Index No. 5-9

CERTIFIED LAND CORNER RESTORATION

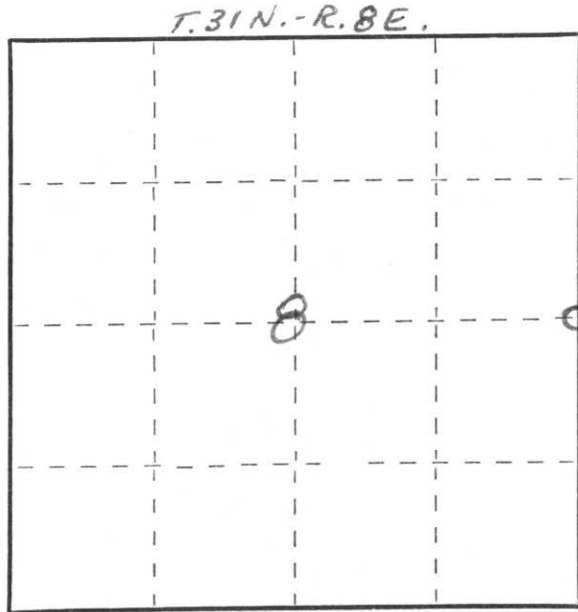
Index No. G-9

State of Wisconsin }  
County of LINCOLN } ss.

I WILLIAM F. KELLY, do hereby certify that on the 23RD day of SEPTEMBER, 1977, I found evidence of the 1/4 SECTION corner of SECTIONS 8 & 9 Township 31, North, Range 8E, Fourth Principal Meridian, as described hereon; and that from this evidence I established a new monument and accessories as described hereon to perpetuate the original location of this corner.

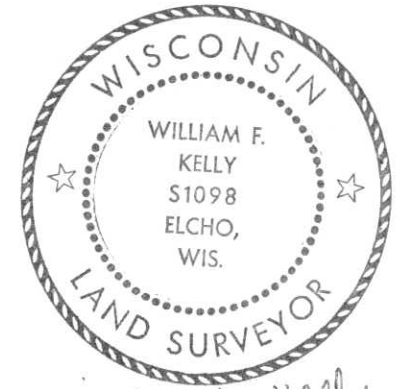
Resident witnesses:

FORM 985 H. C. MILLER CO., MILWAUKEE



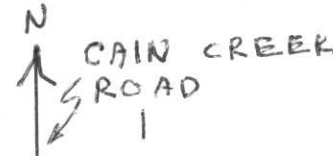
○ = Corner monument restored.

History of original corner establishment:  
GRANITE SET ON RESURVEY OF AREA IN 1920'S.



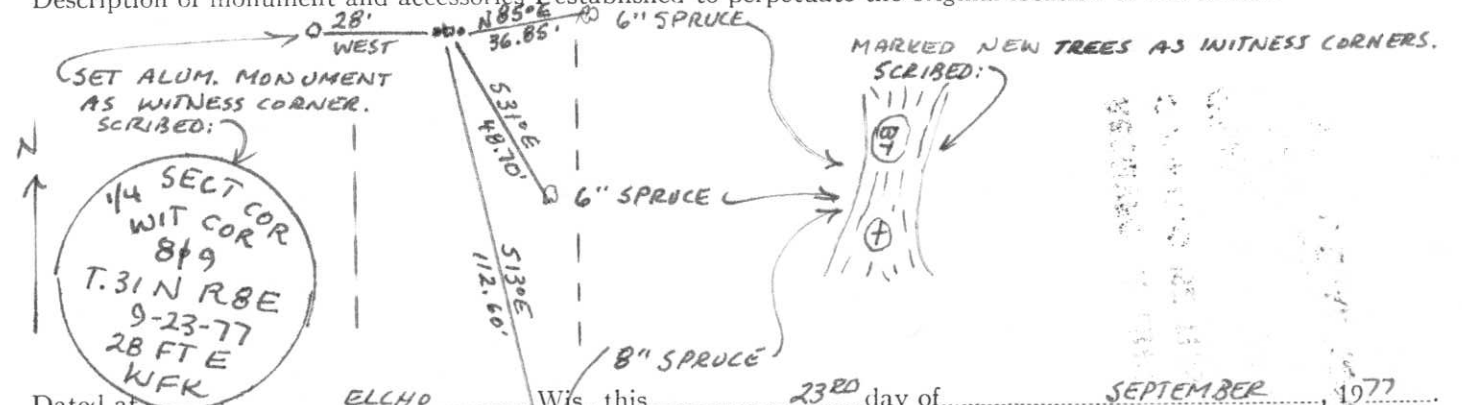
*William F. Kelly*  
9-23-77

Description of corner evidence found:  
LOCATED 6 x 6 GRANITE MONUMENT IN ROAD.



SET 1 1/4" IRON PIPES ALONGSIDE CORNER MONUMENT.

Description of monument and accessories I established to perpetuate the original location of this corner.



Dated at ELCHO, Wis., this 23RD day of SEPTEMBER, 1977

Signature William F. Kelly Title REGISTERED LAND SURVEYOR Registration No. 51098  
(County Surveyor, Registered Land Surveyor, or other duly authorized official)

Office of Register of Deeds, County of \_\_\_\_\_, I hereby certify that the within instrument was filed in this office for record on the \_\_\_\_\_ day of \_\_\_\_\_, 19\_\_\_\_ at \_\_\_\_\_ o'clock \_\_\_\_\_ M.

(Register of Deeds)

By \_\_\_\_\_ Deputy



















