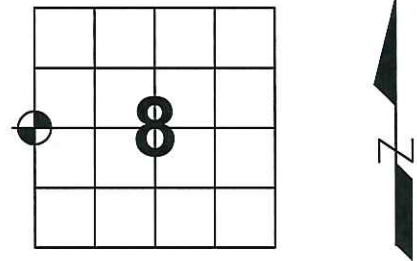


U.S. PUBLIC LAND SURVEY MONUMENT RECORD

Note: This form is intended and designed to fulfill all requirements of Wisconsin Administrative Code, Chapter A-E 7.08, U.S. Public Land Survey Monument Record (3) (a) (b) (c) (d) (e) (f) (g) (h) (i). An additional sheet may be added if necessary to conform with said requirements.

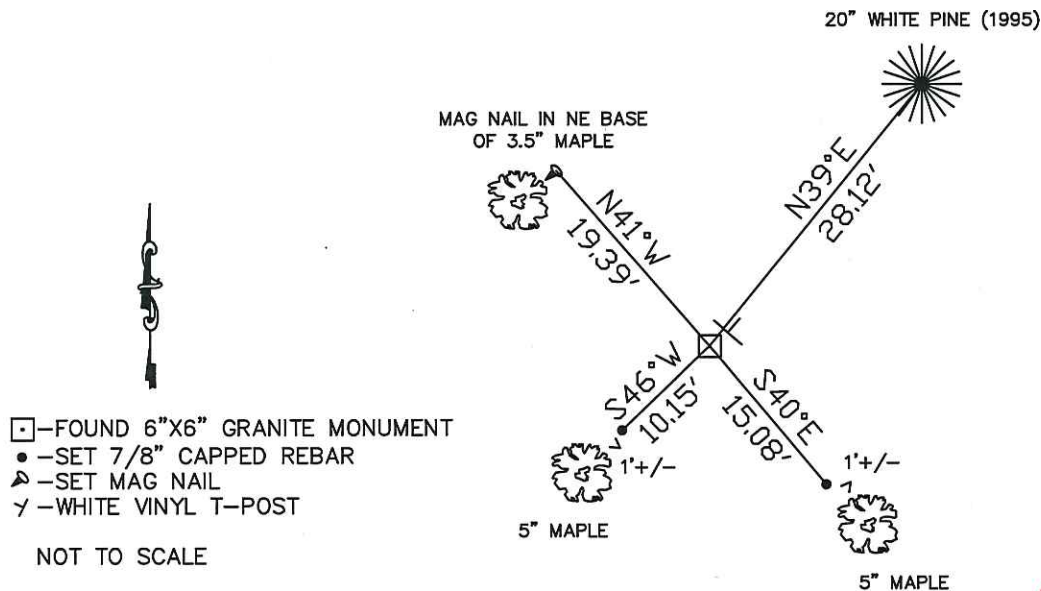
(a) Corner location: Township 31 North
 Range 8 East
 Town/City/Village Pine River
 County Lincoln



(b) (f) (g) (h) Description of monument found at this corner and if it was accepted, state all evidence (material, testimonial, occupational, plats, records, other monuments) used as basis for accepting. If not accepted or if nothing was found, state evidence used as basis for establishing location. If reestablished through lost corner proportionate methods, indicate all monuments, distances and directions used to establish.

- Feb. 1852 – Ellis, A. G.; Ellis, F. S. Set One Quarter Section post. Birch 12 N73°W 25 lks
Hemlock 10 S66°E 29 lks
- Sep. 1995 – Abendroth, Edwin, R. Traversed into wooded area to calculate monument position. Found 8"X8" stone in good condition slightly above grade.
- May 2012 – Dallman, Anthony R. Found said Granite Monument up 8". Northeast Abendroth tie remains, set 3 new ties. Witnessed as shown below:

(c) (d) (e) Plan view of corner with ties to at least 4 witness monuments. If in disagreement with previously established corner, show the distance between the two corners and also indicate the ties to the disputed corner.



(i) I, Anthony R. Dallman
 (type or print name) certify that the corner location on this record was determined by me or under my direction and control and that this U.S. Public Land Survey Monument Record is correct and complete to the best of my knowledge and belief.

Anthony R. Dallman Signature 3/05/13 Date

Index No. G-5

U.S. PUBLIC LAND SURVEY MONUMENT RECORD

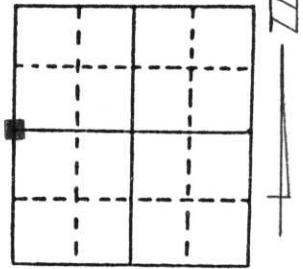
Note: This form is intended and designed to fulfill all requirements of Wisconsin Administrative Code, Chapter A-E 5.02, U.S. Public Land Survey Monument Record (3) (a) (b) (c) (d) (e) (f) (g) (h) (i). An additional sheet may be added if necessary to conform with said requirements.

(a) Corner location: Township 31 North

Range 8 East

Town/City/Village PINE RIVER

County LINCOLN



Section 8

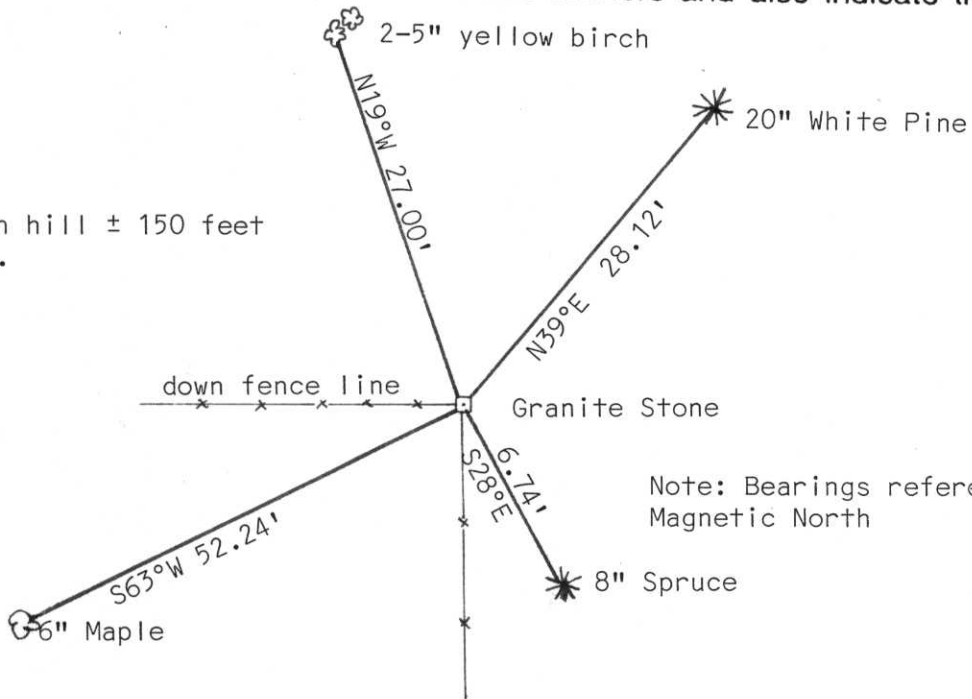
(b) (f) (g) (h) Description of monument found at this corner and if it was accepted, state all evidence (material, testimonial, occupational, plats, records, other monuments) used as a basis for accepting. If not accepted or if nothing was found, state evidence used as basis for establishing location. If reestablished through lost corner proportionate methods, indicate all monuments, distances and directions used to establish.

Traversed into wooded area to calculated monument position. Found 8" X 8" stone in good condition slightly above grade.
Tied stone as shown.

**RECEIVED AT LINCOLN COUNTY
COURTHOUSE THIS 28th DAY
OF Sept. 19 95
Pat Hueber
TAX DESCRIPTION OFFICE**

(c) (d) (e) Plan view of corner with ties to at least 4 witness monuments. If in disagreement with previously established corner, show the distances between the two corners and also indicate the ties to the disputed corner.

Corner located on hill ± 150 feet from small creek.



Note: Bearings referenced to Magnetic North

(i) I, Edwin R. Abendroth RLS NO. S-798

(type or print name) certify that the corner location on this record was determined by me or under my direction and control and that this U.S. Public Land Survey Monument Record is correct and complete to the best of my knowledge and belief.

Edwin R. Abendroth 9-27-95

Signature

Date



Index No. 6-5









Berntsen

adidas

