

U.S. PUBLIC LAND SURVEY MONUMENT RECORD

NOTE: THIS FORM IS INTENDED AND DESIGNED TO FULFILL ALL REQUIREMENTS OF WISCONSIN ADMINISTRATIVE CODE, CHAPTER A-E 7.08, U.S. PUBLIC LAND SURVEY MONUMENT RECORD (3)(a)(b)(c)(d)(e)(f)(g)(h)(i). ADDITIONAL SHEETS MAY BE NECESSARY TO CONFORM TO SAID REQUIREMENTS.

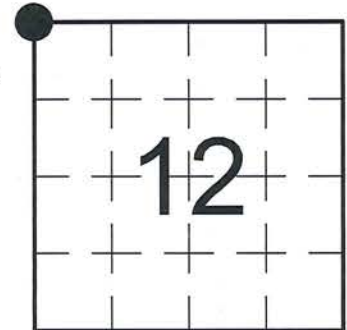
T 31 N, R 8 E

(a) CORNER LOCATION:

NORTHWEST CORNER, SECTION 12
 TOWNSHIP 31 NORTH
 RANGE 8 EAST
 TOWN OF PINE RIVER
 LINCOLN COUNTY
 WISCONSIN

(b) HISTORY OF ORIGINAL CORNER:

ORIGINAL SURVEYOR: A.G. & F.S. Ellis, Set post
 COMMENCING DATE: February 13, 1852
 COMPLETION DATE: February 25, 1852
 ORIGINAL BEARING TREES:
 10" Sugar Maple; N 77° E; 4 links
 14" Birch; N 35° W; 24 links



(f)(g)(h) DESCRIPTION OF MONUMENT FOUND AT THIS CORNER AND IF IT WAS ACCEPTED. STATE ALL EVIDENCE (MATERIAL, TESTIMONIAL, OCCUPATIONAL, PLATS, RECORDS, OTHER MONUMENTS) USED AS A BASIS FOR ESTABLISHING LOCATION. IF RE-ESTABLISHING THROUGH LOST CORNER PROPORTIONATE METHODS, INDICATE ALL MONUMENTS, DISTANCES, AND DIRECTIONS USED TO ESTABLISH. INDICATE TYPE OF MONUMENTS FOUND OR SET.

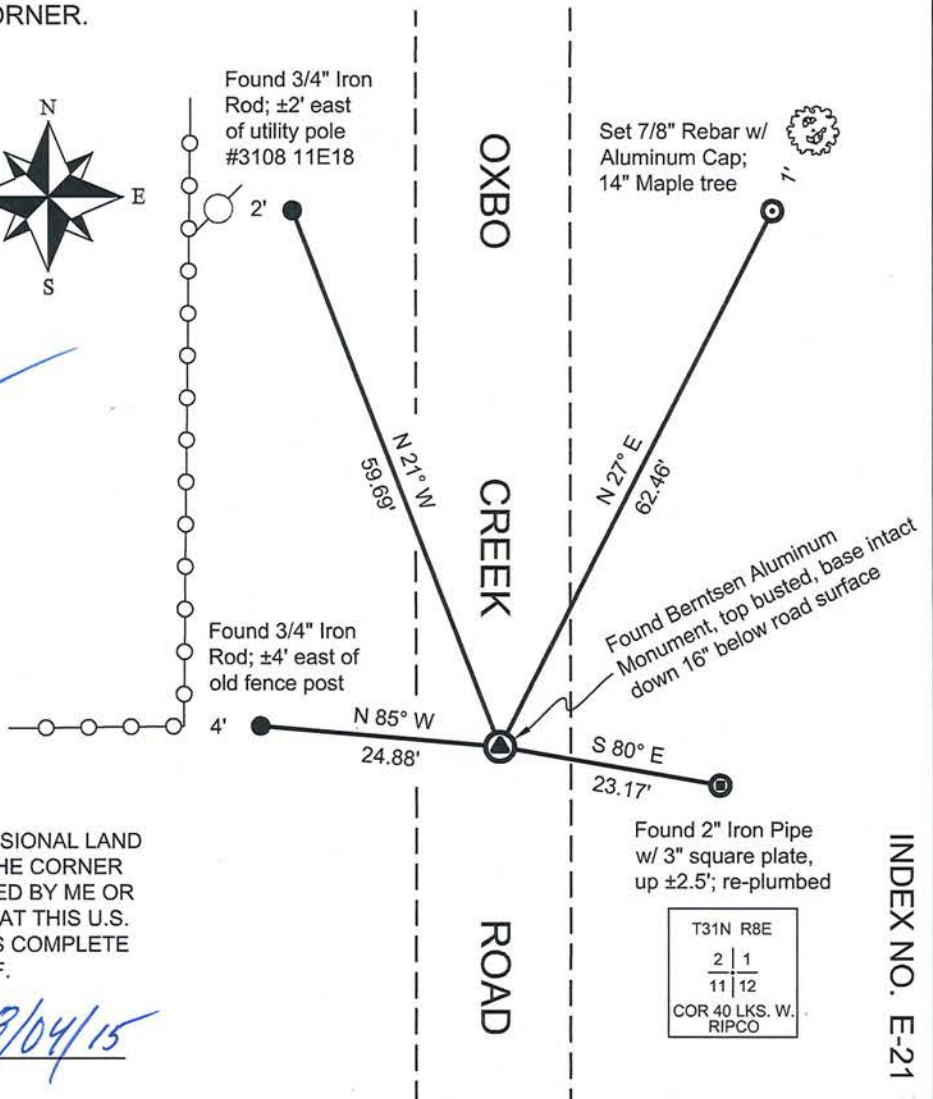
08/13/1979 - S. Schwark, RLS-1205, found a Stone Monument when excavating roadway, down about 5 feet below grade, broken and tipped. He removed the Stone and replaced it with a Lincoln Count Berntsen Monument. He set new reference ties and remeasured an existing tie to perpetuate the corner location.

10/31/2012 - I, Anthony R. Dallman, PLS-2405, found the top of the Berntsen Aluminum Monument broken off below the road surface. The remaining portion of the Aluminum Monument base remains intact, down ±16" below the road surface. I set one new reference tie and remeasured the existing ties to further perpetuate the corner location, as shown in the sketch below.

(c)(d)(e) PLAN VIEW OF THE CORNER WITH TIES TO AT LEAST FOUR WITNESSES. IF IN DISAGREEMENT WITH PREVIOUSLY ESTABLISHED CORNER, SHOW THE DISTANCES BETWEEN THE TWO CORNERS AND ALSO THE TIES TO THE DISPUTED CORNER.



- Bearings by hand-held compass.
 - Distances by steel tape.



I, ANTHONY R. DALLMAN, WISCONSIN PROFESSIONAL LAND SURVEYOR, S-2405, HEREBY CERTIFY THAT THE CORNER LOCATION ON THIS RECORD WAS REFERENCED BY ME OR UNDER MY DIRECTION AND CONTROL AND THAT THIS U.S. PUBLIC LAND SURVEY MONUMENT RECORD IS COMPLETE TO THE BEST OF MY KNOWLEDGE AND BELIEF.

Anthony R. Dallman 8/04/15
 ANTHONY R. DALLMAN, PLS S-2405

T31N R8E	
2	1
11	12
COR 40 LKS. W. RIPCO	

INDEX NO. E-21

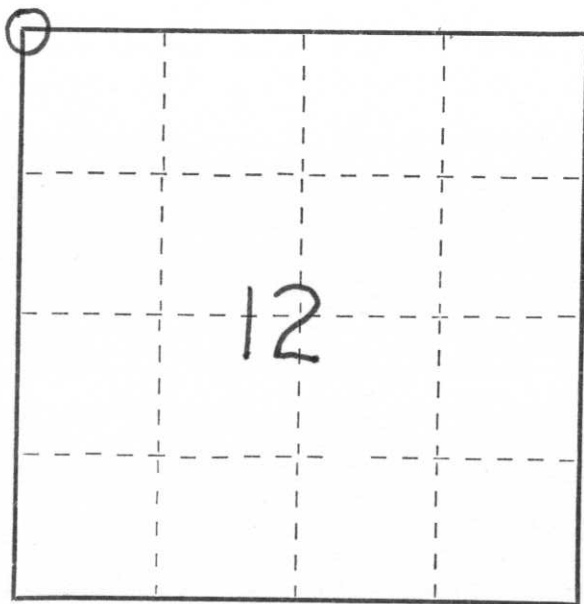
CERTIFIED LAND CORNER RESTORATION

Index No. E-21

State of Wisconsin }
County of Lincoln } ss.

I, Sheridan D. Schwark, do hereby certify that on the 11th day of June, 19 79, I found evidence of the northwest corner of Section 12 Township 31, North, Range 8 east, Fourth, Principal Meridian, as described hereon; and that from this evidence I established a new monument and accessories as described hereon to perpetuate the original location of this corner.

Resident witnesses:



○ = Corner monument restored.

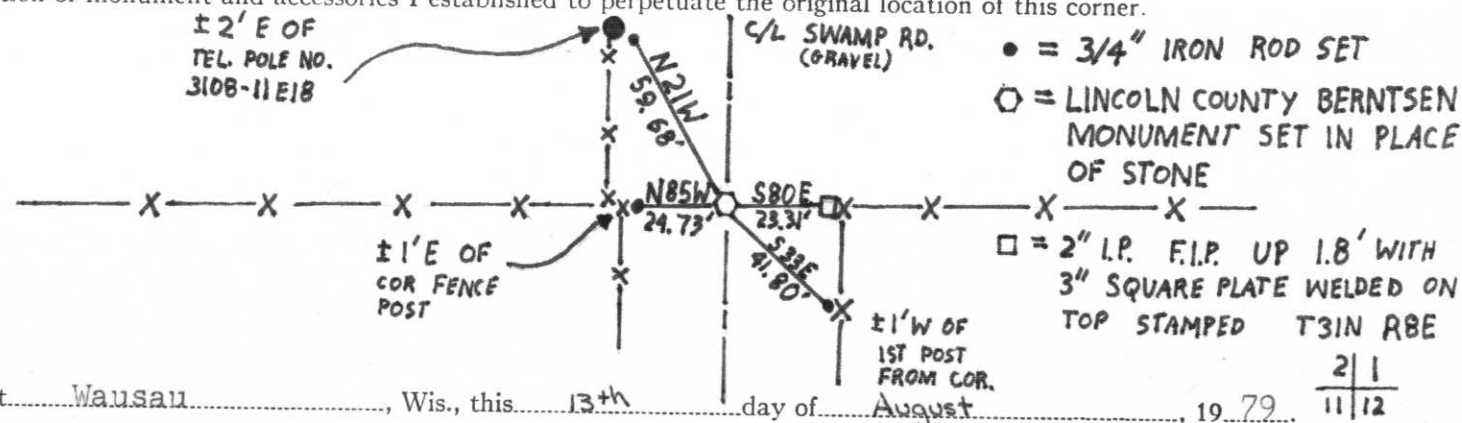
History of original corner establishment:

Date: July 1852
Surveyor: A.G. & F.S. Ellis
Monument: Wood Post
Witnesses: 10" Sugar N77E 4 links
14" Birch N35W 24 links

Description of corner evidence found:

I found a stone monument when excavating the roadway. It was found about 5 feet below grade, broken and tipped. I removed the stone.

Description of monument and accessories I established to perpetuate the original location of this corner.



Dated at Wausau, Wis., this 13th day of August, 19 79

Signature Sheridan D. Schwark Title Registered Land Surveyor Registration No. S-1205
(County Surveyor, Registered Land Surveyor, or other duly authorized official)

Office of Register of Deeds, County of _____, I hereby certify that the within instrument was filed in this office for record on the _____ day of _____, 19 _____ at _____ o'clock _____ M.

(Register of Deeds)

By _____ Deputy

2 | 1
11 | 12
COR 40 LKS W.
RIPCO