

LINCOLN COUNTY U.S. PUBLIC LAND SURVEY MONUMENT LOCATION RECORD

CORNER NUMBER 113181

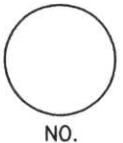
SECTION 11

TOWNSHIP 31 NORTH

RANGE 8 EAST

PINE RIVER

CITY, VILLAGE, TOWN



LANDMARK BENCHMARK _____
 CORNER IDENTITY: NORTHWEST CORNER

FOUND
 SET
 RESET
 RE-TIED

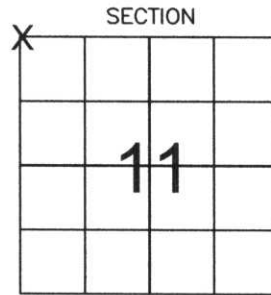
LINCOLN COUNTY COORDINATE: N: 126767.69
 E: 449863.67

ELEVATION-(FEET): _____ DATUM: _____

WEATHER: PARTLY CLOUDY

DATE OF SURVEY: 10-11-05 TEMPERATURE: 50 °F

SURVEY PARTY: NATHAN WINCENTSEN, KEITH WALKOWSKI



LOCATION (Indicated By X)



BASIS FOR MONUMENT LOCATION:

(DESCRIBE METHOD OF SURVEY AND CORNER AUTHENTICATION)

DUG FOR NORTHWEST CORNER WITH COUNTY GRADALL, FOUND BROKEN GRANITE STONE 1.5 FEET BELOW ROAD SURFACE. ACCEPTED STONE AS CORNER AND SET 1" IRON PIPE ALONG NORTH SIDE OF STONE. PERPETUATED CORNER AS SHOWN BELOW.

CERTIFIED CORRECT:

Keith J. Walkowski
KEITH J. WALKOWSKI
 Registered Land Surveyor
 DATE: Jan. 3RD, 2006

FIELD BOOK NO. PINE RIVER PAGE NO. 12

COMPANY RIVERSIDE LAND SURVEYING LLC

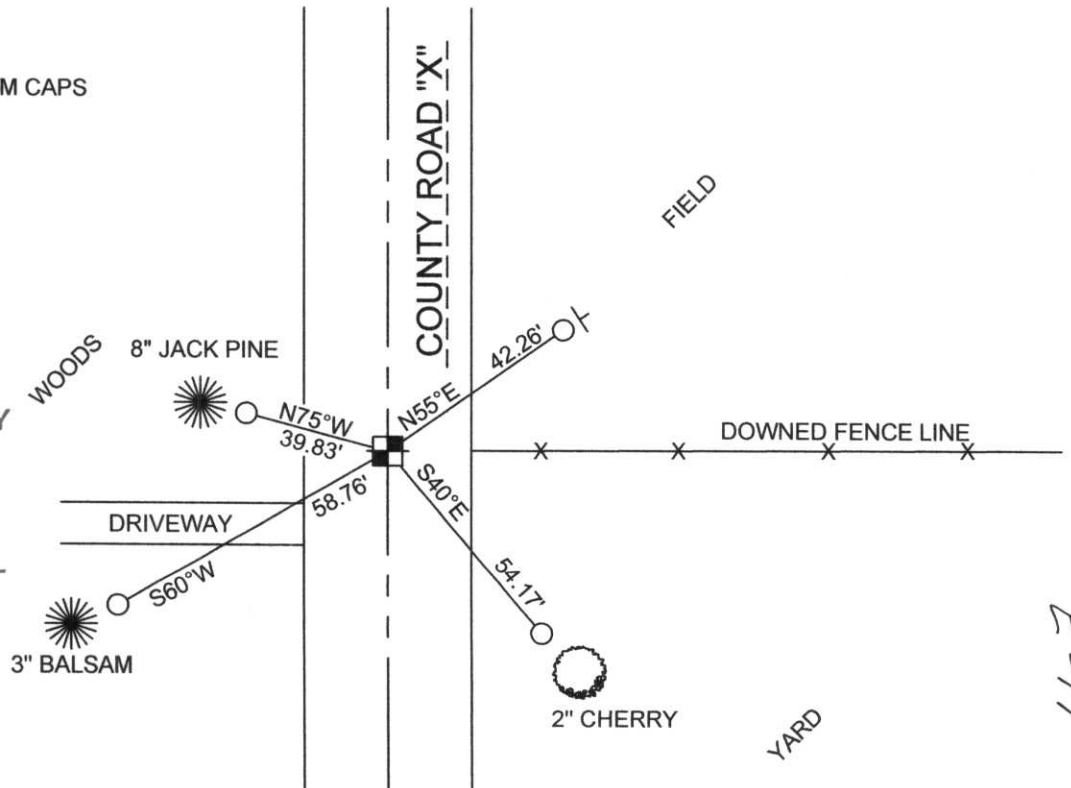
TIE SKETCH:

SHOW MINIMUM OF FOUR (4) HORIZONTAL TIE DISTANCES TO FIXED WITNESS MONUMENTS. DESCRIBE ALL MONUMENTS FOUND OR SET. CORRECT ALL DISTANCES SHOWN TO STANDARD TEMPERATURE OF 68° F.

- FOUND GRANITE STONE
- SET 3/4" REBAR WITH ALUMINUM CAPS
- VINYL SURVEY MARKER POST

NOTE

- ALL BEARINGS ARE FROM A HAND HELD MAGNETIC COMPASS
- THIS DRAWING IS NOT TO SCALE



RECEIVED BY LINCOLN COUNTY SURVEYOR THIS 6TH DAY OF January 20 06
Tony Dahn
 COUNTY SURVEYOR

E-17

113/81