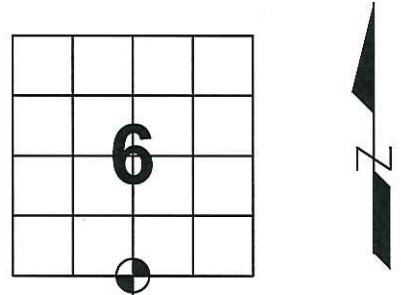


U.S. PUBLIC LAND SURVEY MONUMENT RECORD

Note: This form is intended and designed to fulfill all requirements of Wisconsin Administrative Code, Chapter A-E 7.08, U.S. Public Land Survey Monument Record (3) (a) (b) (c) (d) (e) (f) (g) (h) (i). An additional sheet may be added if necessary to conform with said requirements.

(a) Corner location: Township 31 North
 Range 8 East
 Town/City/Village Pine River
 County Lincoln



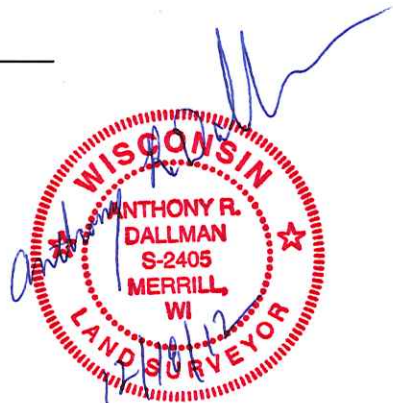
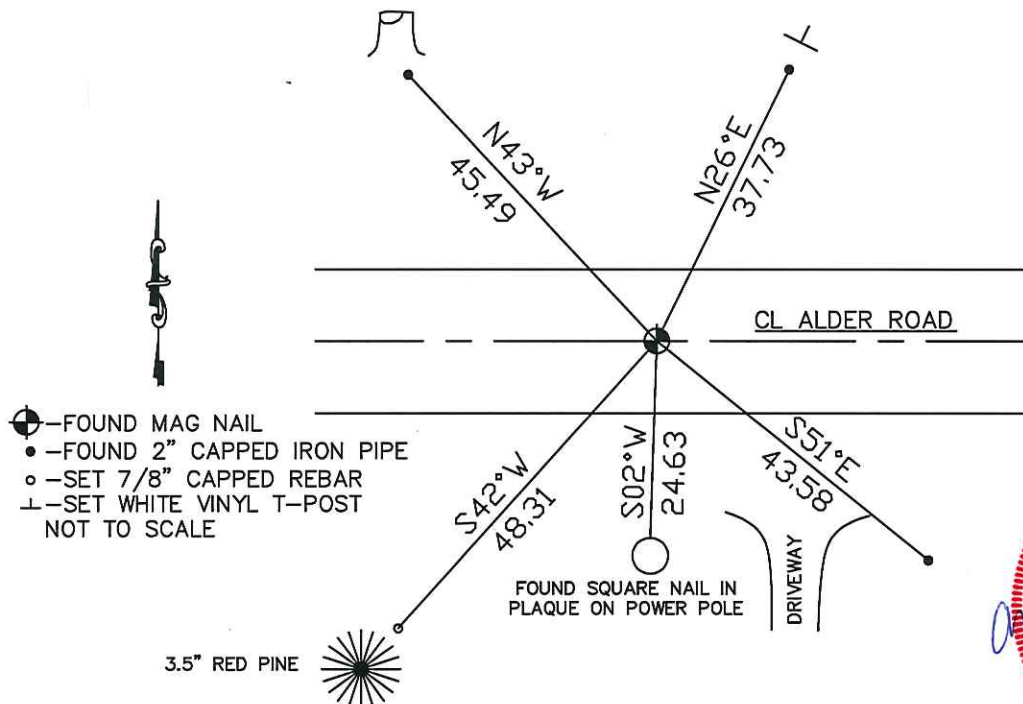
(b) (f) (g) (h) Description of monument found at this corner and if it was accepted, state all evidence (material, testimonial, occupational, plats, records, other monuments) used as basis for accepting. If not accepted or if nothing was found, state evidence used as basis for establishing location. If reestablished through lost corner proportionate methods, indicate all monuments, distances and directions used to establish.

Feb. 1852 – Ellis, A. G; Ellis, F. S. "For 1/4 Section Post a Pine 21 inches is marked."

Aug. 1992 – Mosher, LaVerne H. "Excavated with backhoe. At depth of 16 inches we recovered the bottom 18 inches of a 6"x6" Granite monument tipped slightly toward the Northwest. We then straightened up stone and took temporary ties to restore position. Removed the stone, backfilled hole and reset stone closer to road surface such that top of stone was about 6 inches below surface. Set a 1"x24" iron pipe along North and South faces of stone to aid in future location. Chiseled new "x" on top center of stone and tied out same."

April 2012 – Dallman, Anthony R. Found Mag Nail in CL of Alder Road, fit Mosher's ties. Southwest tie was missing. Set new Southwest tie and held Mosher's existing ties as shown below:

(c) (d) (e) Plan view of corner with ties to at least 4 witness monuments. If in disagreement with previously established corner, show the distance between the two corners and also indicate the ties to the disputed corner.



(i) I, Anthony R. Dallman
 (type or print name) certify that the corner location on this record was determined by me or under my direction and control and that this U.S. Public Land Survey Monument Record is correct and complete to the best of my knowledge and belief.

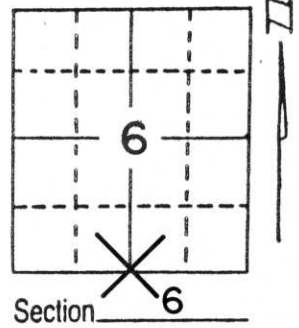
Anthony R. Dallman
 Signature Date 12/18/12

Index No. 4-3

U.S. PUBLIC LAND SURVEY MONUMENT RECORD

Note: This form is intended and designed to fulfill all requirements of Wisconsin Administrative Code, Chapter A-E 5.02, U.S. Public Land Survey Monument Record (3) (a) (b) (c) (d) (e) (f) (g) (h) (i). An additional sheet may be added if necessary to conform with said requirements.

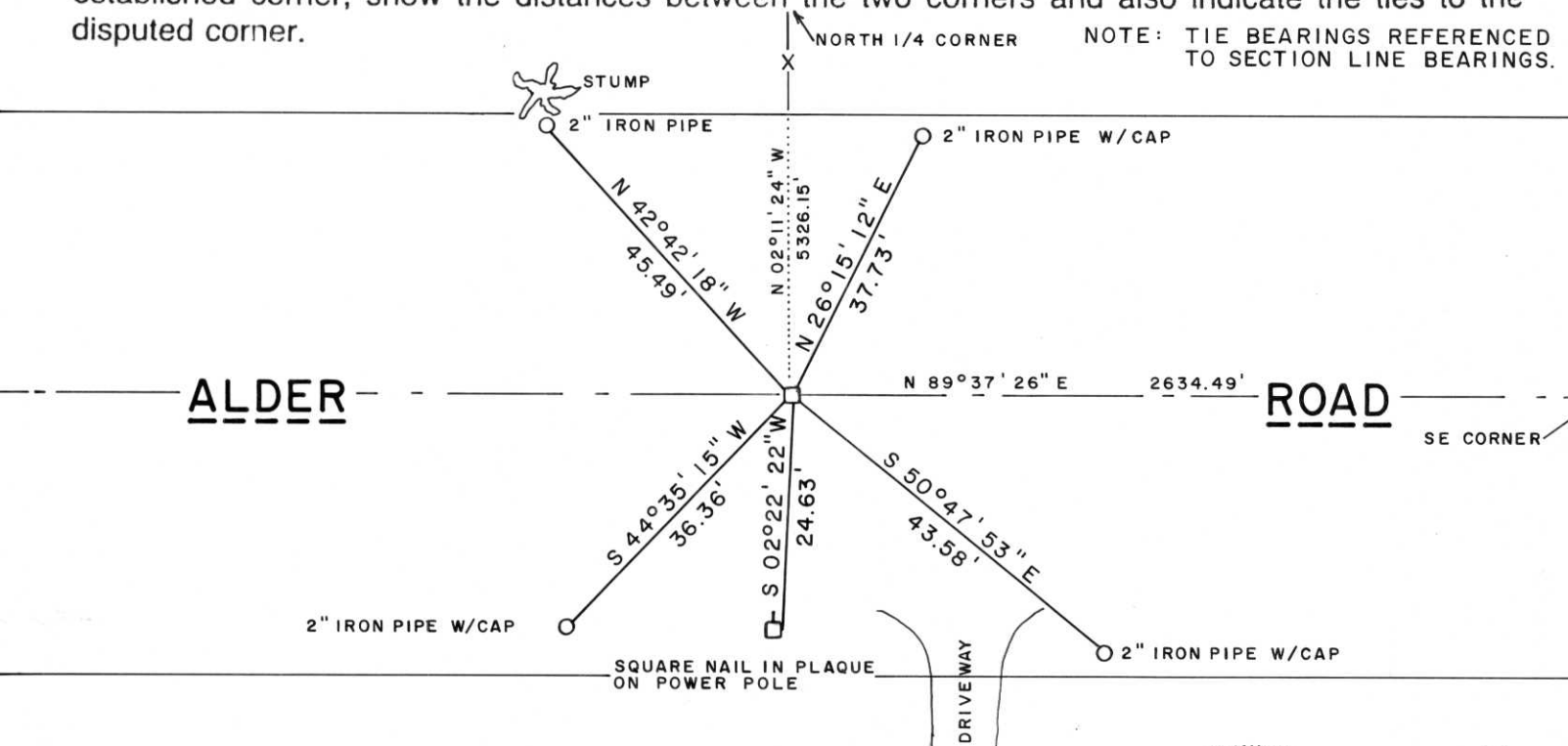
(a) Corner location: Township 31 North
 Range 8 East
 Town/~~City/Village~~ PINE RIVER
 County LINCOLN



(b) (f) (g) (h) Description of monument found at this corner and if it was accepted, state all evidence (material, testimonial, occupational, plats, records, other monuments) used as a basis for accepting. If not accepted or if nothing was found, state evidence used as basis for establishing location. If reestablished through lost corner proportionate methods, indicate all monuments, distances and directions used to establish.

Excavated with backhoe. At depth of 16 inches we recovered the bottom 18 inches of a 6" x 6" Red Granite monument tipped slightly toward the Northwest. We then straightened up stone and took temporary ties to restore position. Removed the stone, backfilled hole and reset stone closer to road surface such that top of stone was about 6 inches below surface. Set a 1" x 24" iron pipe along North and South faces of stone to aid future location. Chiselled new "X" on top center of stone and tied out same.

(c) (d) (e) Plan view of corner with ties to at least 4 witness monuments. If in disagreement with previously established corner, show the distances between the two corners and also indicate the ties to the disputed corner.



(i) I, LaVerne H. Mosher
 (type or print name) certify that the corner location on this record was determined by me or under my direction and control and that this U.S. Public Land Survey Monument Record is correct and complete to the best of my knowledge and belief.

LaVerne H. Mosher
 Signature

AUGUST 7, 1992
 Date



Index No. E-3









