

U.S. PUBLIC LAND SURVEY MONUMENT RECORD

NOTE: THIS FORM IS INTENDED AND DESIGNED TO FULFILL ALL REQUIREMENTS OF WISCONSIN ADMINISTRATIVE CODE, CHAPTER A-E 7.08, U.S. PUBLIC LAND SURVEY MONUMENT RECORD (3)(a)(b)(c)(d)(e)(f)(g)(h)(i). ADDITIONAL SHEETS MAY BE NECESSARY TO CONFORM TO SAID REQUIREMENTS.

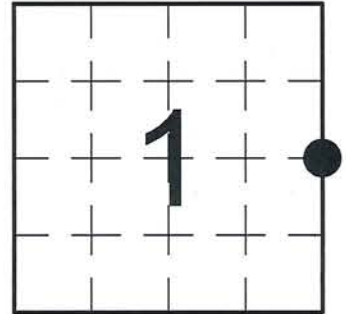
T 31 N, R 8 E

(a) CORNER LOCATION:

EAST QUARTER CORNER, SECTION 1
 TOWNSHIP 31 NORTH
 RANGE 8 EAST
 TOWN OF PINE RIVER
 LINCOLN COUNTY
 WISCONSIN

(b) HISTORY OF ORIGINAL CORNER:

ORIGINAL SURVEYOR: James M. Marsh, Set post
 COMMENCING DATE: July 8, 1851
 COMPLETION DATE: July 28, 1851
 ORIGINAL BEARING TREES:
 10" Birch; S 44° E; 45 links
 12" Elm; S 51° W; 5 links
 12" Elm; N 41° W; 30 links
 16" Birch; N 44° E; 47 links



(f)(g)(h) DESCRIPTION OF MONUMENT FOUND AT THIS CORNER AND IF IT WAS ACCEPTED. STATE ALL EVIDENCE (MATERIAL, TESTIMONIAL, OCCUPATIONAL, PLATS, RECORDS, OTHER MONUMENTS) USED AS A BASIS FOR ESTABLISHING LOCATION. IF RE-ESTABLISHING THROUGH LOST CORNER PROPORTIONATE METHODS, INDICATE ALL MONUMENTS, DISTANCES, AND DIRECTIONS USED TO ESTABLISH. INDICATE TYPE OF MONUMENTS FOUND OR SET.

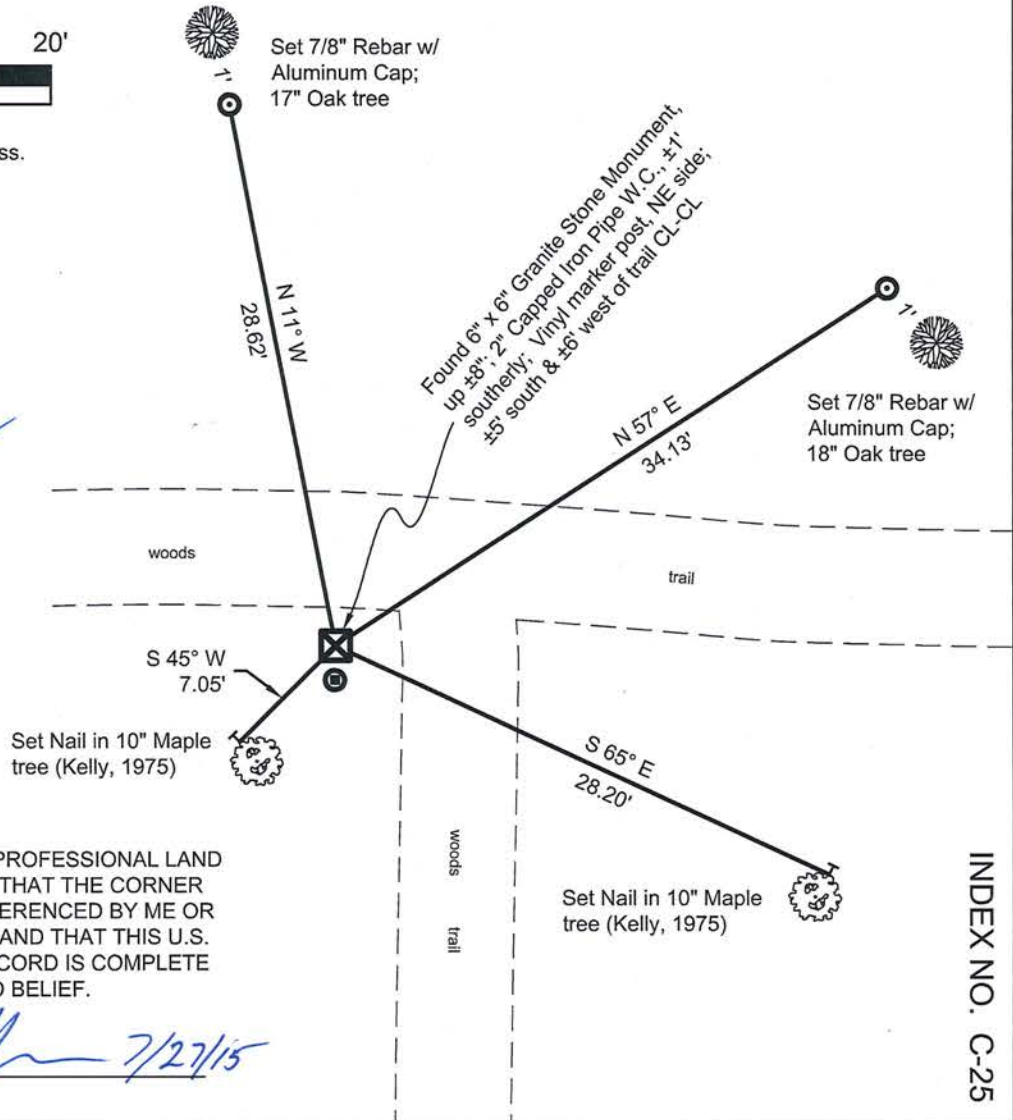
02/05/1975 - W. Kelly, RLS-1098, located a 6" square Granite Stone Monument, with a drill hole on top, at the corner location. He notes that there were scribed bearing trees and a blazed line running south from the Stone. He set a 2" Capped Iron Pipe 1' south as a Witness Corner and made reference ties to perpetuate the corner location.

08/02/2013, I, Anthony R. Dallman, PLS-2405, found the 6" x 6" Granite Stone Monument at the corner location, protruding ±8" above the ground surface. The Stone was in relative agreement with the existing 1975 bearing tree reference ties. The 2" Capped Iron Pipe Witness Corner remains intact, ±1' southerly of Stone. I set new reference ties to further perpetuate the corner location, as shown in the sketch below.

(c)(d)(e) PLAN VIEW OF THE CORNER WITH TIES TO AT LEAST FOUR WITNESSES. IF IN DISAGREEMENT WITH PREVIOUSLY ESTABLISHED CORNER, SHOW THE DISTANCES BETWEEN THE TWO CORNERS AND ALSO THE TIES TO THE DISPUTED CORNER.



- Tie bearings by hand-held compass.
- Tie distances by steel tape.



I, ANTHONY R. DALLMAN, WISCONSIN PROFESSIONAL LAND SURVEYOR, S-2405, HEREBY CERTIFY THAT THE CORNER LOCATION ON THIS RECORD WAS REFERENCED BY ME OR UNDER MY DIRECTION AND CONTROL AND THAT THIS U.S. PUBLIC LAND SURVEY MONUMENT RECORD IS COMPLETE TO THE BEST OF MY KNOWLEDGE AND BELIEF.

Anthony R. Dallman 7/27/15
 ANTHONY R. DALLMAN, PLS S-2405

INDEX NO. C-25

CERTIFIED LAND CORNER RESTORATION

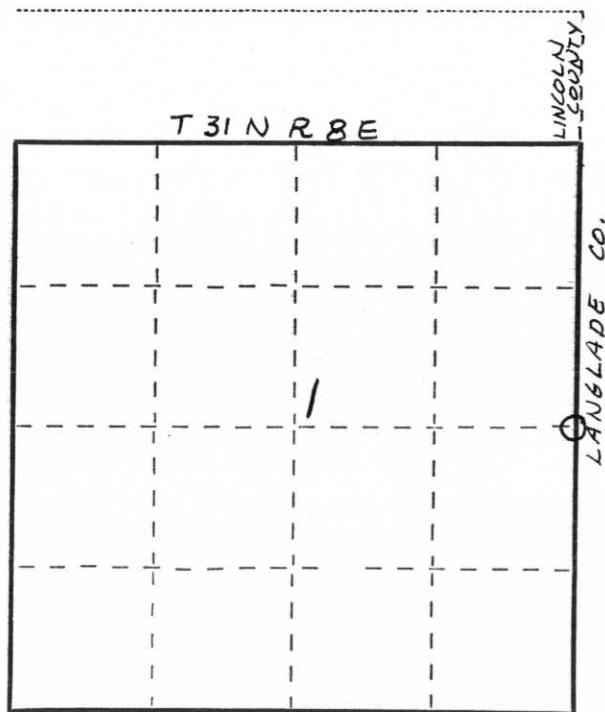
Index No. C-25

State of Wisconsin }
County of LINCOLN } ss.

I WILLIAM F. KELLY, do hereby certify that on the 5TH day of FEBRUARY, 1975, I found evidence of the 1/4 SECTION corner of SECTIONS 1 & 6 Township 31, North, Range 8 & 9 EAST, Fourth, Principal Meridian, as described hereon; and that from this evidence I established a new monument and accessories as described hereon to perpetuate the original location of this corner.

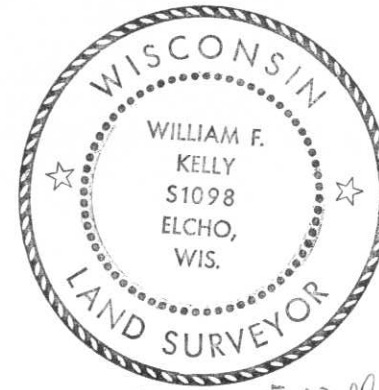
Resident witnesses:

WALTER KRAUSE



○ = Corner monument restored.

History of original corner establishment:
GRANITE STONE SET
IN THE 1920'S

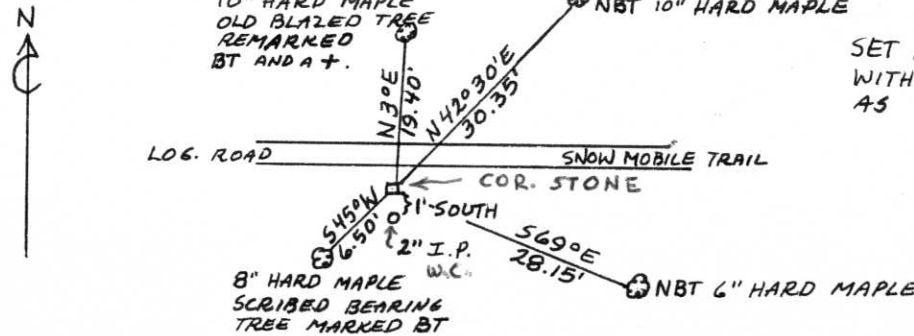


William F. Kelly

Description of corner evidence found:

LOCATED 6" SQUARE GRANITE STONE - STONE HAD DRILL HOLE IN TOP.
ALSO FOUND SCRIBED BEARING TREE.

Description of monument and accessories I established to perpetuate the original location of this corner.



SET 2" x 36" BLACK I.P.
WITH MARKED BRASS CAP
AS WITNESS TO CORNER.
MARKED:



NOTES: A BLAZED LINE RUNS SOUTH FROM COR. TO THE S.E. COR. SECT. 1 - T. 31 N. - R. 8 E. NEW BEARING TREES MARKED NBT ON TRUNK WITH + AT BASE.

Dated at ELCHO, Wis., this 5TH day of FEBRUARY, 1975.

Signature William F. Kelly Title REGISTERED LAND SURVEYOR Registration No. 51098
(County Surveyor, Registered Land Surveyor, or other duly authorized official)

Office of Register of Deeds, County of _____, I hereby certify that the within instrument was filed in this office for record on the _____ day of _____, 19____ at _____ o'clock _____ M.

(Register of Deeds)

By _____ Deputy