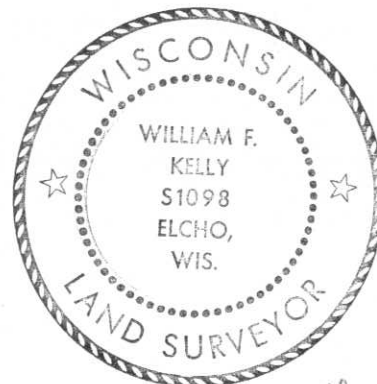


CERTIFIED LAND CORNER RESTORATION



Index No. C-23

State of Wisconsin }
County of LINCOLN } ss.

I WILLIAM F. KELLY, do hereby certify that on the 13TH day of FEBRUARY, 1975, I found evidence of the CENTER corner of SECTION 1 Township 31, North, Range 8 EAST, Fourth, Principal Meridian, as described hereon; and that from this evidence I established a new monument and accessories as described hereon to perpetuate the original location of this corner.

Resident witnesses:

WALTER KRAUSE

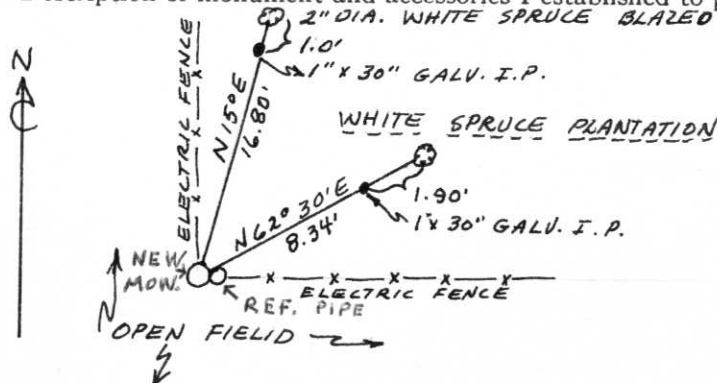
History of original corner establishment:
1

Description of corner evidence found:

LOCATED 1 1/2" BLACK IRON PIPE WITH PLATE ON TOP MARKED: T31NR8E C/4-51 RIPCO

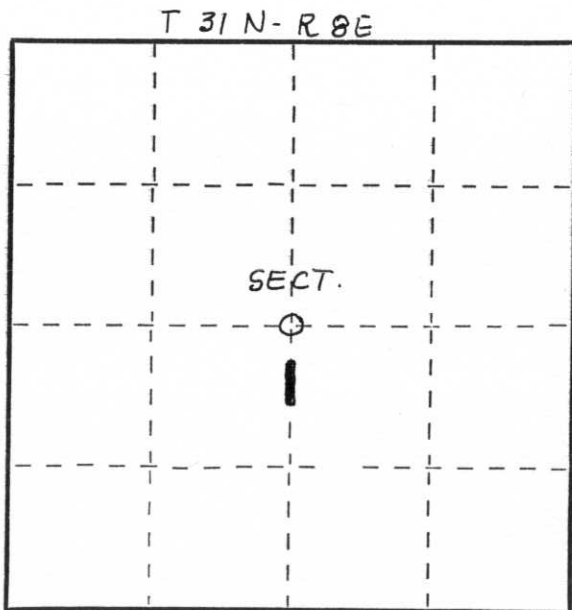
PIPE IDENTIFIED AS CENTER OF SECTION BY RESIDENT WITNESS. PIPE SET ON SURVEY FOR RIPCO IN 1965. NOTE: PIPE WAS BENT OVER BY FARM MACH.

Description of monument and accessories I established to perpetuate the original location of this corner.



SET NEW ALUM. MONUMENT FLUSH WITH GROUND. RESET PIPE WITH PLATE NEXT TO NEW CDR. MONUMENT. MONUMENT MARKED: T31NR8E WFK

NOTE: NO TREES OF ANY SIZE AVAILABLE TO MARK.



○ = Corner monument restored.

Dated at ELCHO, Wis., this 13TH day of FEBRUARY, 1975.

Signature William F. Kelly Title REGISTERED LAND SURVEYOR Registration No. 51098
(County Surveyor, Registered Land Surveyor, or other duly authorized official)

Office of Register of Deeds, County of _____, I hereby certify that the within instrument was filed in this office for record on the _____ day of _____, 19____ at _____ o'clock _____ M.

(Register of Deeds)

By _____ Deputy