

Attachment to Tie Sheet C-9 T31N, R8E

Visited this corner on May 23, 2012 and found all 4 Reference Monuments. The Northeast Reference Monument tie did not cross well with the other 3. Dug at the position of the 3 Reference Monument ties and found a railroad spike. Nothing was found below the railroad spike. Set a Berntsen Monument down 8" at that position. New measurement to the Northeast Reference Monument is 29.39'. Set a white "T" Post near the Northwest Reference Monument. Field Book #5 Page 137.

Anthony Dallman *6/12/12*

Anthony Dallman

Lincoln County Surveyor

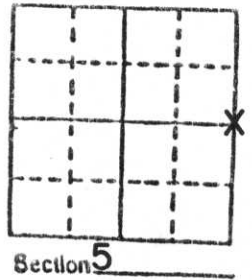


U.S. PUBLIC LAND SURVEY MONUMENT RECORD

Note: This form is intended and designed to fulfill all requirements of Wisconsin Administrative Code, Chapter A-E 5.02, U.S. Public Land Survey Monument Record (3) (a) (b) (c) (d) (e) (f) (g) (h) (i). An additional sheet may be added if necessary to conform with said requirements.

(a) Corner location: Township 31 North
 Range 8 East

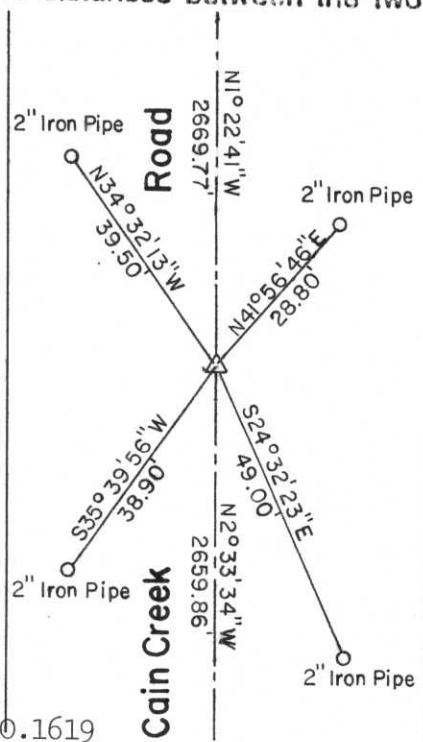
Town Pine River
 County Lincoln



b) (f) (g) (h) Description of monument found at this corner and if it was accepted, state all evidence (material, testimonial, occupational, plats, records, other monuments) used as a basis for accepting. If not accepted or if nothing was found, state evidence used as basis for establishing location. If reestablished through lost corner proportionate methods, indicate all monuments, distances and directions used to establish.

Found existing iron bar below road surface. Tied into traverse of Section and accepted as correct. Tied out.

c) (d) (e) Plan view of corner with ties to at least 4 witness monuments. If in disagreement with previously established corner, show the distances between the two corners and also indicate the ties to the disputed corner.



(i) I, Gary R. Krueger RLS NO.1619

(type or print name) certify that the corner location on this record was determined by me or under my direction and control and that this U.S. Public Land Survey Monument Record is correct and complete to the best of my knowledge and belief.

Gary R. Krueger
 Signature

11-2-90
 Date



Index No. C-9









