

Attachment to Tie Sheet C-5 T31N, R8E

Visited this corner on May 17, 2012 and found the Granite Monument and all Reference Monuments in good condition. The tree near the Southerly Reference Monument is gone with the stump flush with ground and the tree near the Northeast Reference Monument is dead. Field Book #5 Page 132.

Anthony Dallman

6/09/12

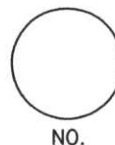
Anthony Dallman

Lincoln County Surveyor



LINCOLN COUNTY U.S. PUBLIC LAND SURVEY MONUMENT LOCATION RECORD

CORNER NUMBER 53184
 SECTION 5
 TOWNSHIP 31 NORTH
 RANGE 8 EAST
PINE RIVER
 CITY, VILLAGE, TOWN



LANDMARK BENCHMARK _____
 CORNER IDENTITY: WEST 1/4 CORNER

FOUND
 SET
 RESET
 RE-TIED

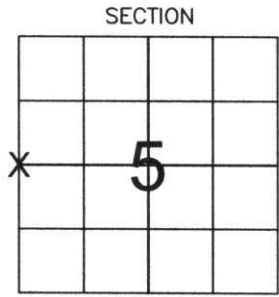
LINCOLN COUNTY COORDINATE: N: 129385.03
 E: 433962.95

ELEVATION-(FEET): _____ DATUM: _____

WEATHER: MOSTLY CLOUDY

DATE OF SURVEY: 11-29-05 TEMPERATURE: 20 °F

SURVEY PARTY: NATHAN WINCENTSEN, KEITH WALKOWSKI



LOCATION (Indicated By X)



BASIS FOR MONUMENT LOCATION:

(DESCRIBE METHOD OF SURVEY AND CORNER AUTHENTICATION)

SEARCHED FOR WEST 1/4 CORNER ALONG NORTH-SOUTH FENCE LINE. FOUND GRANITE STONE IN MOUND OF ROCKS. ACCEPTED STONE AS WEST 1/4 CORNER AND PERPETUATED AS SHOWN BELOW.

FIELD BOOK NO. PINE RIVER PAGE NO. 34
 COMPANY RIVERSIDE LAND SURVEYING LLC

CERTIFIED CORRECT:
Keith J. Walkowski
KEITH J. WALKOWSKI
 Registered Land Surveyor
 DATE: Jan. 3RD, 2006

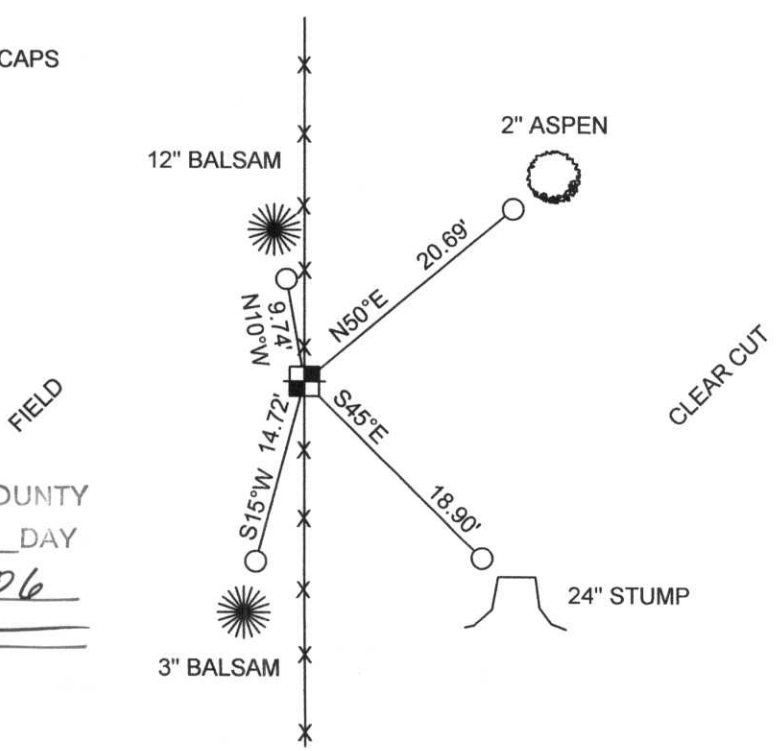
TIE SKETCH:

SHOW MINIMUM OF FOUR (4) HORIZONTAL TIE DISTANCES TO FIXED WITNESS MONUMENTS. DESCRIBE ALL MONUMENTS FOUND OR SET. CORRECT ALL DISTANCES SHOWN TO STANDARD TEMPERATURE OF 68° F.

- FOUND GRANITE STONE
- SET 3/4" REBAR WITH ALUMINUM CAPS
- VINYL SURVEY MARKER POST

NOTE

- ALL BEARINGS ARE FROM A HAND HELD MAGNETIC COMPASS
- THIS DRAWING IS NOT TO SCALE



RECEIVED BY LINCOLN COUNTY SURVEYOR THIS 6TH DAY OF January 20 06
Tony Dalk
 COUNTY SURVEYOR

C-5

53184

CHISEMAN CHUCK TRAIL









