

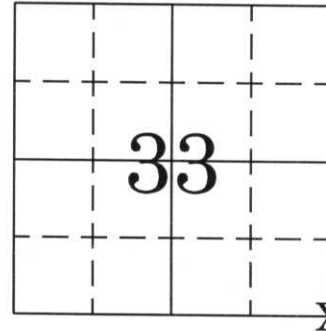
MARATHON COUNTY U.S. PUBLIC LAND SURVEY MONUMENT LOCATION RECORD

SECTION 33

TOWNSHIP 31 N

RANGE 7 E

PINE RIVER
CITY, VILLAGE, TOWN
SECTION



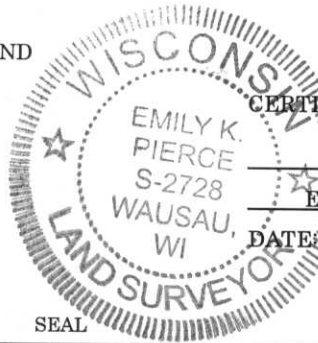
LOCATION
(indicated by X)

CERTIFIED CORRECT

Emily K. Pierce

EMILY K. PIERCE, RLS-2728

DATE: FEB. 6, 2007



SEAL

LANDMARK BENCHMARK: _____

CORNER LOCATION AND MONUMENT: 6"x 6" RED GRANITE STONE

COUNTY COORDINATE: N _____, E _____

DATE OF SURVEY: 11/15/2006 TEMPERATURE: °

SURVEY PARTY/COMPANY: C.J. NOWACZYK, E.K. PIERCE

FIELD BOOK NO. MAINE PAGE NO. 36

BASIS FOR MONUMENT LOCATION:

(DESCRIBE METHOD OF SURVEY AND CORNER AUTHENTICATION)

OCT. 31, 1981 LaVERNE MOSHER FOUND BOTH LINCOLN AND MARATHON COUNTY CORNERS. SET THREE TIES FOR EACH AND TIED TO EACH OTHER.

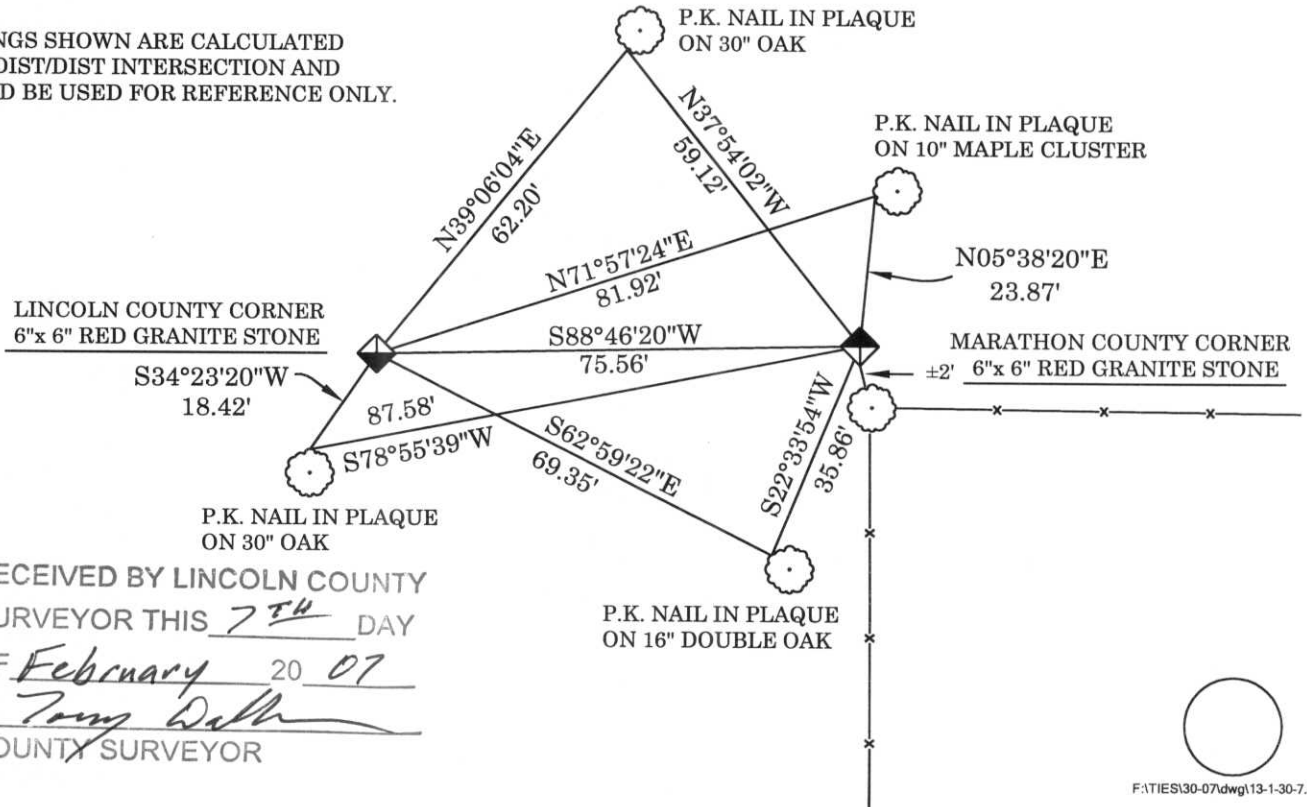
NOV. 15, 2006 CHET NOWACZYK AND I FOUND BOTH MARATHON AND LINCOLN COUNTY CORNERS. FOUND SOME REMAINING TIES OF MOSHERS. REBLAZED TIES AND TOOK NEW DISTANCES THAT CHECK WELL WITH MOSHER'S DISTANCES.

FOUND
SET
RE-SET
TIED

TIE SKETCH:

SHOW MINIMUM OF FOUR (4) HORIZONTAL TIE DISTANCES TO FIXED WITNESS MONUMENTS. DESCRIBE ALL MONUMENTS FOUND OR SET. CORRECT ALL DISTANCES SHOWN STANDARD TEMPERATURE OF 68° F.

BEARINGS SHOWN ARE CALCULATED FROM DIST/DIST INTERSECTION AND SHOULD BE USED FOR REFERENCE ONLY.



RECEIVED BY LINCOLN COUNTY
SURVEYOR THIS 7TH DAY
OF February 20 07
Tom Dalk
COUNTY SURVEYOR

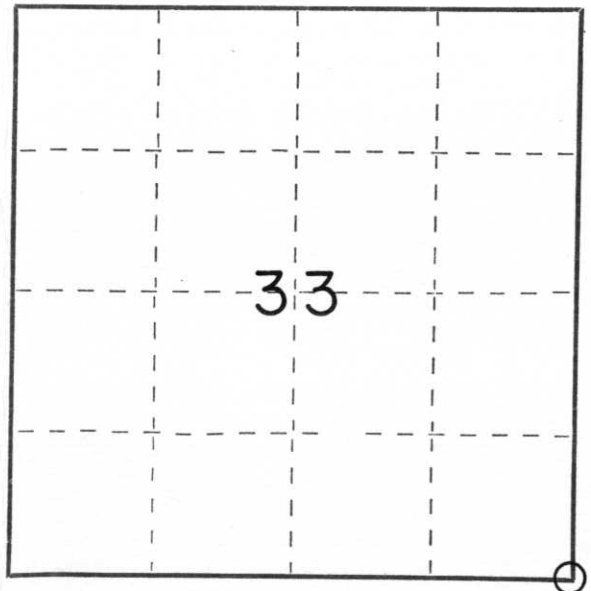
CERTIFIED LAND CORNER RESTORATION

Index No. 4-13

State of Wisconsin }
County of Lincoln } ss.

I LaVerne H. Mosher do hereby certify that on the 30th day of October, 1981, I found evidence of the Southeast corner of Section 33 Township 31, North, Range 7 East, Fourth, Principal Meridian, as described hereon; and that from this evidence I established a new monument and accessories as described hereon to perpetuate the original location of this corner.

Resident witnesses:



○ = Corner monument restored.

History of original corner establishment:

Original government survey of South line of Township 31 North, Range 7 East conducted in the year of 1852. The original government notes indicate wooden posts were placed to mark section and quarter corners. Date and origin of granite stones set in area are unknown, as the field notes, if any, were destroyed by fire.

Description of corner evidence found:

Recovered intact a 6" square red granite stone monument marked 33/34 on top of stones. This monument is flush with the ground surface and is located in a wooded area about 75 feet West of a fence corner from which fences run South and East. Approximately 2 feet North of this fence corner I recovered a 6" square red granite stone with cross, said monument being the Northwest corner to Section 6, Township 30 North, Range 8 East, Town of Texas, Marathon County, Wisconsin. Left stone in place and set a 1"x24" iron pipe alongside South face of monument to aid future location. Placed standard location poster on maple 16.5 feet Northwest of stone.

Description of monument and accessories I established to perpetuate the original location of this corner.

LINCOLN COUNTY (Southeast corner Section 33-31-7)
EAST 75.62' - 6" square Red Granite stone monument (NW corner Sec. 6-30-8)
SSW 19.04' - Nail in plaque on Southeast face of 12" Oak
WEST 50.20' - Nail in plaque on South face of twin 7" Maple
NORTH 43.94' - Nail in plaque on West face of 8" Maple

MARATHON COUNTY (Northwest corner Section 6-30-8)
ENE 22.38' - Nail in plaque on Northwest face of 10" Poplar
SSW 35.95' - Nail in plaque on West face of 14" Oak
NW 59.12' - Nail in plaque on Southwest face of 24" Oak
WEST 75.62' - 6" square Red Granite stone monument (SE corner Sec. 33-31-7)

Dated at Schofield, Wis., this 5th day of November, 1981.

Signature LaVerne H. Mosher Title Reg. Land Surveyor Registration No. 1188
(County Surveyor, Registered Land Surveyor, or other duly authorized official)

Office of Register of Deeds, County of _____, I hereby certify that the within instrument was filed in this office for record on the _____ day of _____, 19____ at _____ o'clock _____ M.

(Register of Deeds)

By _____ Deputy

21
1871



