

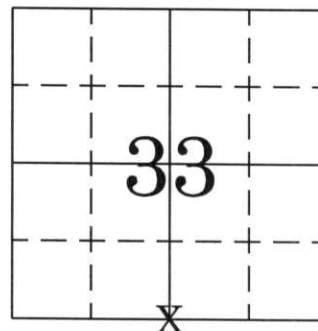
MARATHON COUNTY U.S. PUBLIC LAND SURVEY MONUMENT LOCATION RECORD

SECTION 33

TOWNSHIP 31 N

RANGE 7 E

PINE RIVER
CITY, VILLAGE, TOWN
SECTION



LOCATION
(indicated by X)

LANDMARK BENCHMARK: _____

CORNER LOCATION AND MONUMENT: 6"x 6" RED GRANITE STONE

COUNTY COORDINATE: N _____, E _____

DATE OF SURVEY: 9/21/2006 TEMPERATURE: °

SURVEY PARTY/COMPANY: C.J. NOWACZYK, E.K. PIERCE

FIELD BOOK NO. MAINE PAGE NO. 25-26

BASIS FOR MONUMENT LOCATION:

(DESCRIBE METHOD OF SURVEY AND CORNER AUTHENTICATION)

FEB. 7, 1975 CHET NOWACZYK FOUND BOTH THE LINCOLN COUNTY CORNER AND THE MARATHON COUNTY CORNER 104.4 FEET APART. SET TIES FOR BOTH CORNERS AND SHOWED BOTH ON TIESHEET.

SEPT. 21, 2006 CHT NOWACZYK AND I FOUND BOTH CORNERS. FOUND ONE REMAINING TIE TO THE NORTH OF THE LINCOLN COUNTY CORNER. SET NEW TIES FOR BOTH CORNER AND SET WHITE VINYL CHANNELS NEXT TO BOTH CORNERS.

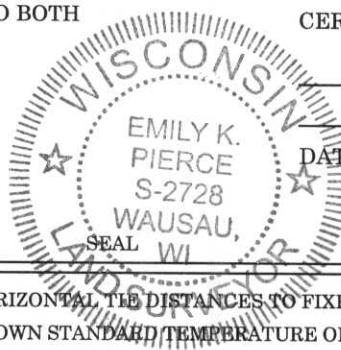
FOUND
SET
RE-SET
TIED

CERTIFIED CORRECT

Emily K. Pierce

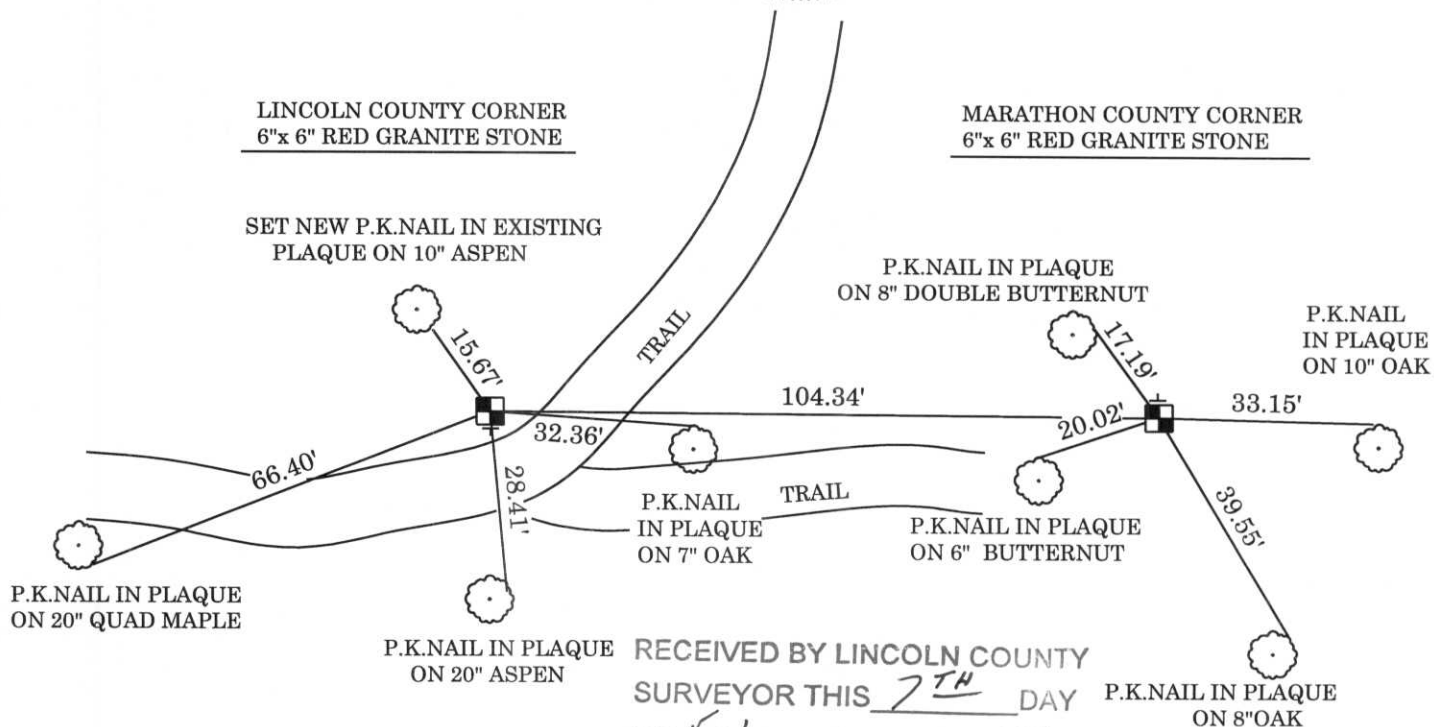
EMILY K. PIERCE, RLS-2728

DATE: 9/21/2006



TIE SKETCH:

SHOW MINIMUM OF FOUR (4) HORIZONTAL TIE DISTANCES TO FIXED WITNESS MONUMENTS. DESCRIBE ALL MONUMENTS FOUND OR SET. CORRECT ALL DISTANCES SHOWN STANDARD TEMPERATURE OF 68° F.



RECEIVED BY LINCOLN COUNTY
SURVEYOR THIS 7TH DAY
OF February 20 07
Tony Dahl
COUNTY SURVEYOR