

U.S. PUBLIC LAND SURVEY MONUMENT RECORD

NOTE: THIS FORM IS INTENDED AND DESIGNED TO FULFILL ALL REQUIREMENTS OF WISCONSIN ADMINISTRATIVE CODE, CHAPTER A-E 7.08, U.S. PUBLIC LAND SURVEY MONUMENT RECORD (3)(a)(b)(c)(d)(e)(f)(g)(h)(i). ADDITIONAL SHEETS MAY BE NECESSARY TO CONFORM TO SAID REQUIREMENTS.

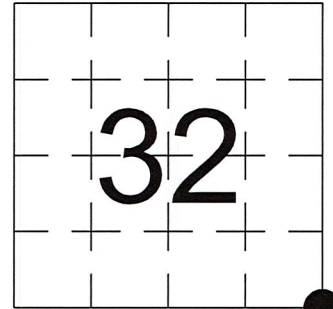
T 31 N, R 7 E

(a) CORNER LOCATION:

SOUTHEAST CORNER, SECTION 32
 TOWNSHIP 31 NORTH
 RANGE 7 EAST
 TOWN OF PINE RIVER
 LINCOLN COUNTY
 WISCONSIN

(b) HISTORY OF ORIGINAL CORNER:

ORIGINAL SURVEYOR: See Previous Tie Sheet
 COMMENCING DATE:
 COMPLETION DATE:
 ORIGINAL BEARING TREES:



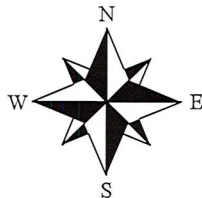
(f)(g)(h) DESCRIPTION OF MONUMENT FOUND AT THIS CORNER AND IF IT WAS ACCEPTED. STATE ALL EVIDENCE (MATERIAL, TESTIMONIAL, OCCUPATIONAL, PLATS, RECORDS, OTHER MONUMENTS) USED AS A BASIS FOR ESTABLISHING LOCATION. IF RE-ESTABLISHING THROUGH LOST CORNER PROPORTIONATE METHODS, INDICATE ALL MONUMENTS, DISTANCES, AND DIRECTIONS USED TO ESTABLISH. INDICATE TYPE OF MONUMENTS FOUND OR SET.

9/16/1971, Edwin Abendroth, found a 6" square Stone Monument 1.08' West of 6" square Concrete Monument marking the NE Corner of Section 2-30-7.

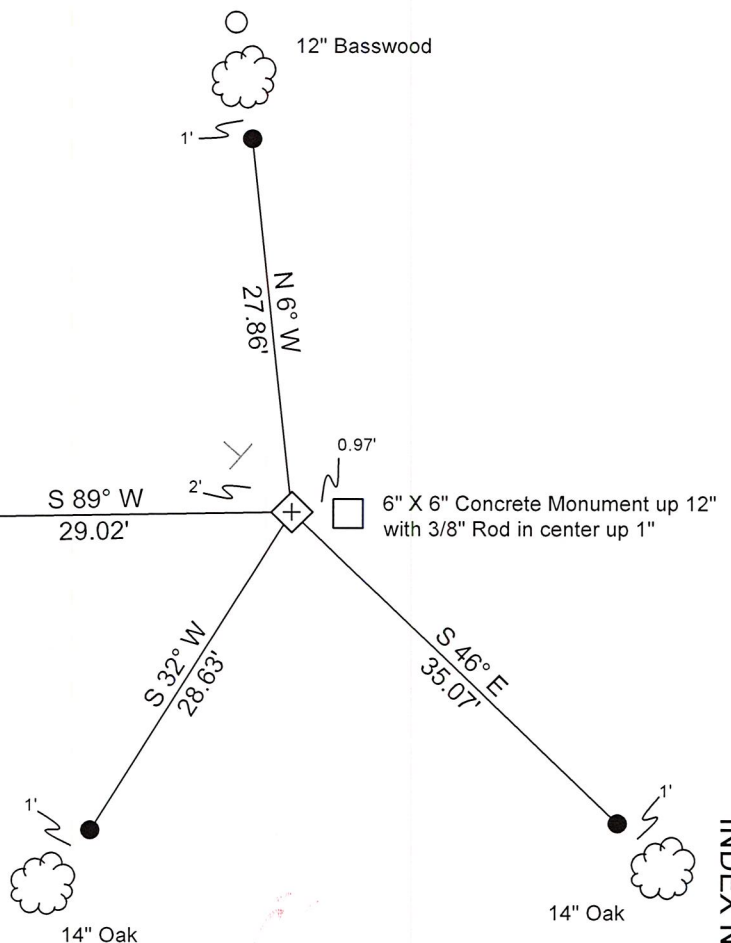
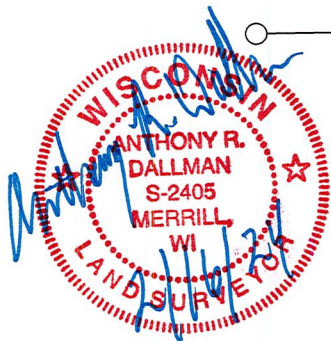
10/10/2023, I, Anthony R. Dallman, PLS-2405, found a 6" X 6" Granite Monument, up 6", and the 2 iron witness monuments. I accepted this location and set witness monuments, as shown in the sketch below, to further perpetuate the corner location.

(c)(d)(e) PLAN VIEW OF THE CORNER WITH TIES TO AT LEAST FOUR WITNESSES. IF IN DISAGREEMENT WITH PREVIOUSLY ESTABLISHED CORNER, SHOW THE DISTANCES BETWEEN THE TWO CORNERS AND ALSO THE TIES TO THE DISPUTED CORNER.

- Tie bearings by hand-held compass.
- Tie distances by steel tape.
- Not to scale.



- - 1 3/4" O.D. Iron Pipe
- - Set 3/4" Capped Rebar
- ⊥ - Set Vinyl Post



I, ANTHONY R. DALLMAN, WISCONSIN PROFESSIONAL LAND SURVEYOR, S-2405, HEREBY CERTIFY THAT THE CORNER LOCATION ON THIS RECORD WAS REFERENCED BY ME OR UNDER MY DIRECTION AND CONTROL AND THAT THIS U.S. PUBLIC LAND SURVEY MONUMENT RECORD IS COMPLETE TO THE BEST OF MY KNOWLEDGE AND BELIEF.

Anthony R. Dallman 02/16/24
 ANTHONY R. DALLMAN, PLS S-2405

INDEX NO. Y-09

43107320000_Mon-N



4310732000_North



43107320000_West



4310732000_South



43107320000_East



MARATHON COUNTY
SURVEY MONUMENT LOCATION RECORD

SECTION 2
 TOWNSHIP 30
 RANGE 7
 TEXAS
 (CITY, VILLAGE, TOWN)

11
 NO.

LANDMARK BENCHMARK FOUND
 CORNER IDENTITY: NE COR SEC. 2-30-7 SET
 STATE PLANE COORDINATE: N: _____ RE-SET
 ZONE: _____ E: _____ RE-TIED
 ELEVATION -(FEET): _____ DATUM: _____
 THETA ANGLE: _____ WEATHER: _____
 DATE OF SURVEY: SEPT. 16, 1971 TEMPERATURE: 65 °F
 SURVEY PARTY: ABENDROTH, DENZINE, LOBNER



BASIS FOR MONUMENT LOCATION:
 (DESCRIBE METHOD OF SURVEY AND CORNER AUTHENTICATION)

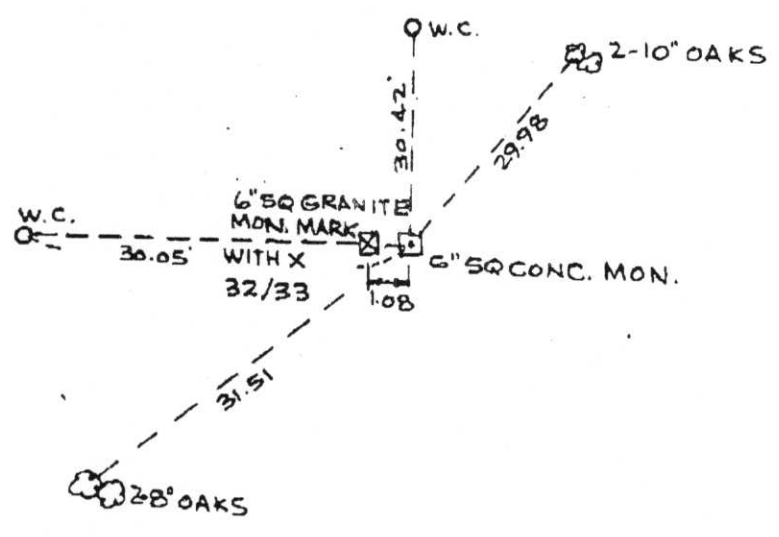
LOCATED STONE MONUMENT FOR SE COR SEC. 32-31-7 (LINCOLN COUNTY).
 ACCORDING TO THE ORIGINAL GOV'T. NOTES SET 6" SQ CONC. MON. 1.64 LINKS EAST OF EXISTING COR.



(SE 32-31-7)

CERTIFIED CORRECT:
Edwin R. Abendroth
 5-798
 REGISTERED LAND SURVEYOR
 DATE: SEPT. 21, 1971

TIE SKETCH: SHOW MINIMUM OF THREE (3) HORIZONTAL TIE DISTANCES TO FIXED WITNESS MONUMENTS. DESCRIBE ALL MONUMENTS FOUND OR SET. CORRECT ALL DISTANCES SHOWN TO STANDARD TEMPERATURE OF 68° F.



NO. 205 001 MARATHON CITY PLNG ZNG LAND + 9171553660382 15:52 09/29/98

RECEIVED AT LINCOLN COUNTY
 COURTHOUSE THIS 29 DAY
 OF Sept 19 98
 TAX DESCRIPTION OFFICE

6-9