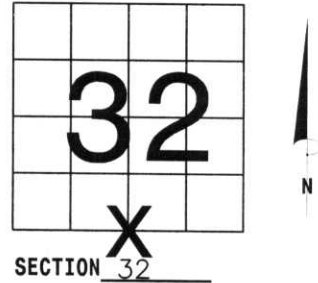


U.S. PUBLIC LAND SURVEY MONUMENT RECORD

NOTE: THIS FORM IS INTENDED AND DESIGNED TO FULFILL ALL REQUIREMENTS OF WISCONSIN ADMINISTRATIVE CODE, CHAPTER LAND SURVEY MONUMENT RECORD (3) (a) (b) (c) (d) (e) (f) (g) (h) (i). AN ADDITIONAL SHEET MAY BE ADDED IF NECESSARY TO CONFORM WITH SAID REQUIREMENTS. A-E 7.08 U.S. PUBLIC LAND SURVEY MONUMENT RECORD

(a) CORNER LOCATION: TOWNSHIP 31 NORTH
 RANGE 7 EAST/WEST
 TOWN/CITY/VILLAGE SCOTT
 COUNTY LINCOLN

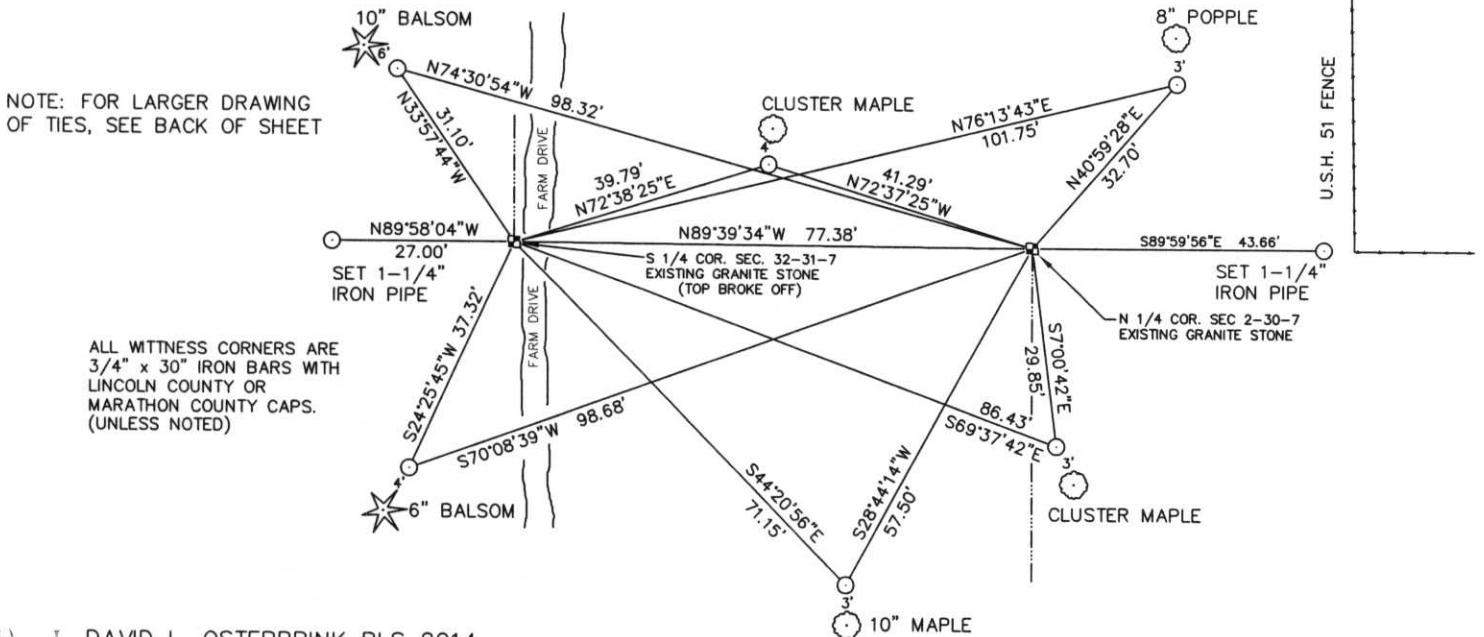


SECTION 32

(b) (f) (g) (h) DESCRIPTION OF MONUMENT FOUND AT THIS CORNER AND IF IT WAS ACCEPTED, STATE ALL EVIDENCE (MATERIAL, TESTIMONIAL, OCCUPATIONAL, PLATS, RECORDS, OTHER MONUMENTS) USED AS BASIS FOR ACCEPTING. IF NOT ACCEPTED OR IF NOTHING WAS FOUND, STATE EVIDENCE USED AS BASIS FOR ESTABLISHING LOCATION. IF REESTABLISHED THROUGH LOST CORNER PROPORTIONATE METHODS, INDICATE ALL MONUMENTS, DISTANCES AND DIRECTIONS USED TO ESTABLISH. INDICATE TYPE OF MONUMENT FOUND OR SET AND SIGN POST.

I COULD NOT FIND THIS CORNER. ALL TIES WERE GONE. I FINALLY FOUND THE N 1/4 CORNER FOR SECTION 2-30-7. THE TIE SHEET FOR 32-31-7, SAYS THIS CORNER IS 72.30' WEST OF N 1/4 COR. 2-30-7. WHEN I PULLED THAT DISTANCE, IT FELL IN THE MIDDLE OF A SNOW MOBILE TRAIL. DEAN MCDONALD, LONG TIME RESIDENT, SAID THIS CORNER WAS ALWAYS ON THE EDGE OF THE SNOWMOBILE TRAIL. HE SAID A FEW YEARS AGO, THE STONE WAS STICKING UP ABOUT 6" BUT BELIEVED THAT THE TRAIL GROOMER BROKE THE TOP OFF. DEAN MCDONALD FOUND THE STONE AND THE TOP 6" THAT WAS BROKE OFF. I HELD THE EXISTING STONE, LEFT THE TOP 6" PIECE LAYING BY THE STONE. I PUT A 3/16" DRILL HOLE IN THE TOP OF THE STONE FOR CORNER. I SET A CARSONITE WARNING SIGN ON THE WEST SIDE OF THE STONE. WHEN I CAME BACK A MONTH LATER, THE SIGN WAS LAYING ON THE SIDE OF THE TRAIL. I THINK THE TRAIL GROOMER KNOCKED IT OUT. TIED STONE OUT AS SHOWN. I BELIEVE THE OLD TIE SHEET HAD A TYPO ERROR. 72.30' SHOULD BE 77.38'. THE STONE IS 2" BELOW GROUND SURFACE.

(c) (d) (e) PLAN VIEW OF CORNER WITH TIES TO AT LEAST 4 WITNESS MONUMENTS. IF IN DISAGREEMENT WITH PREVIOUSLY ESTABLISHED CORNER, SHOW THE DISTANCES BETWEEN THE TWO CORNERS AND ALSO INDICATE THE TIES TO THE DISPUTED CORNER.



NOTE: FOR LARGER DRAWING OF TIES, SEE BACK OF SHEET

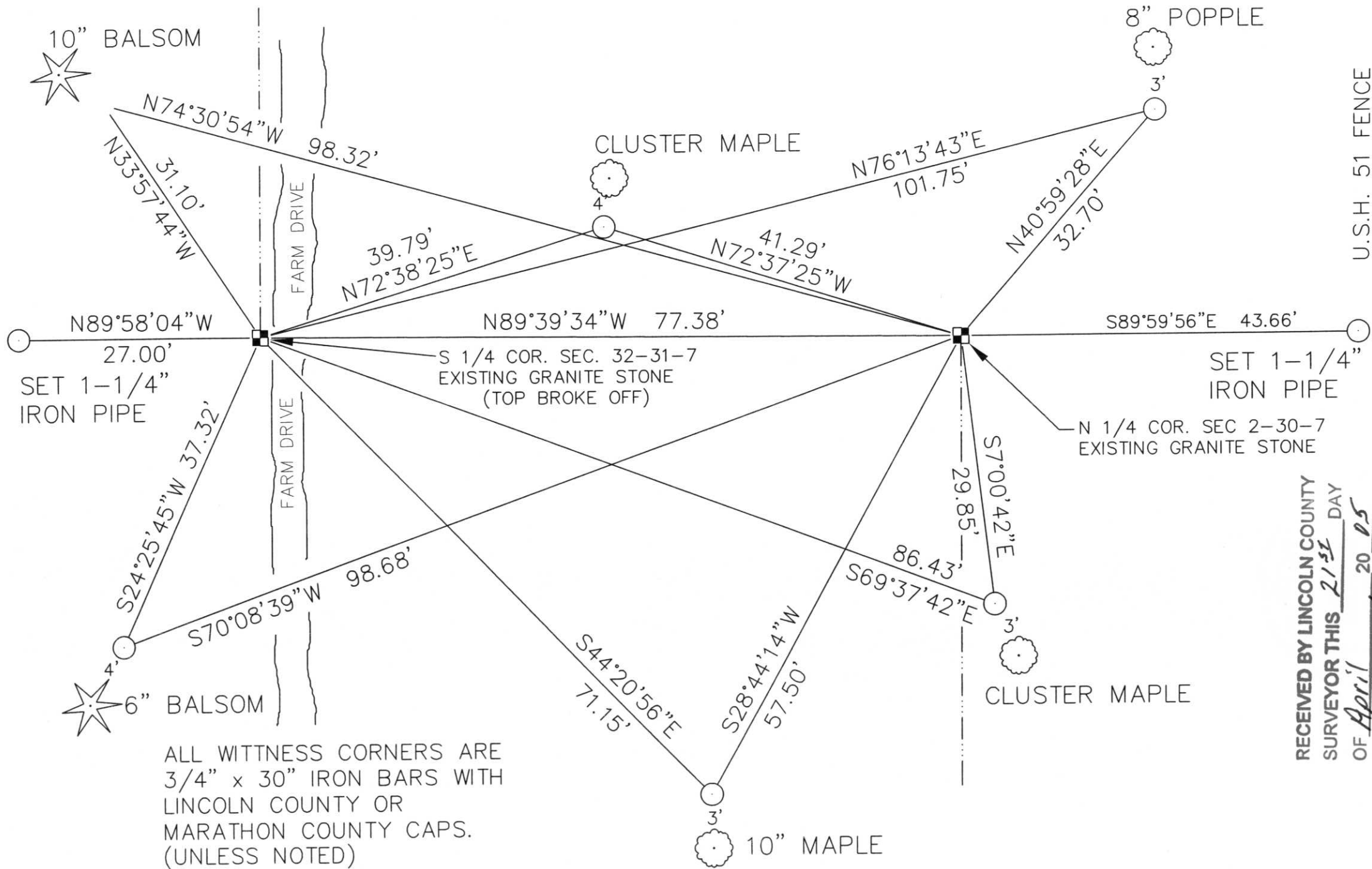
ALL WITNESS CORNERS ARE 3/4" x 30" IRON BARS WITH LINCOLN COUNTY OR MARATHON COUNTY CAPS. (UNLESS NOTED)

(i) I, DAVID L. OSTERBRINK RLS 2014
 (TYPE OR PRINT NAME) CERTIFY THAT THE CORNER LOCATION ON THIS RECORD WAS DETERMINED BY ME OR UNDER MY DIRECTION AND CONTROL AND THAT THIS U.S. PUBLIC LAND SURVEY MONUMENT RECORD IS CORRECT AND COMPLETE TO THE BEST OF MY KNOWLEDGE AND BELIEF.

David L. Osterbrink
 SIGNATURE 4-13-05
 DATE



INDEX NO. 9-7



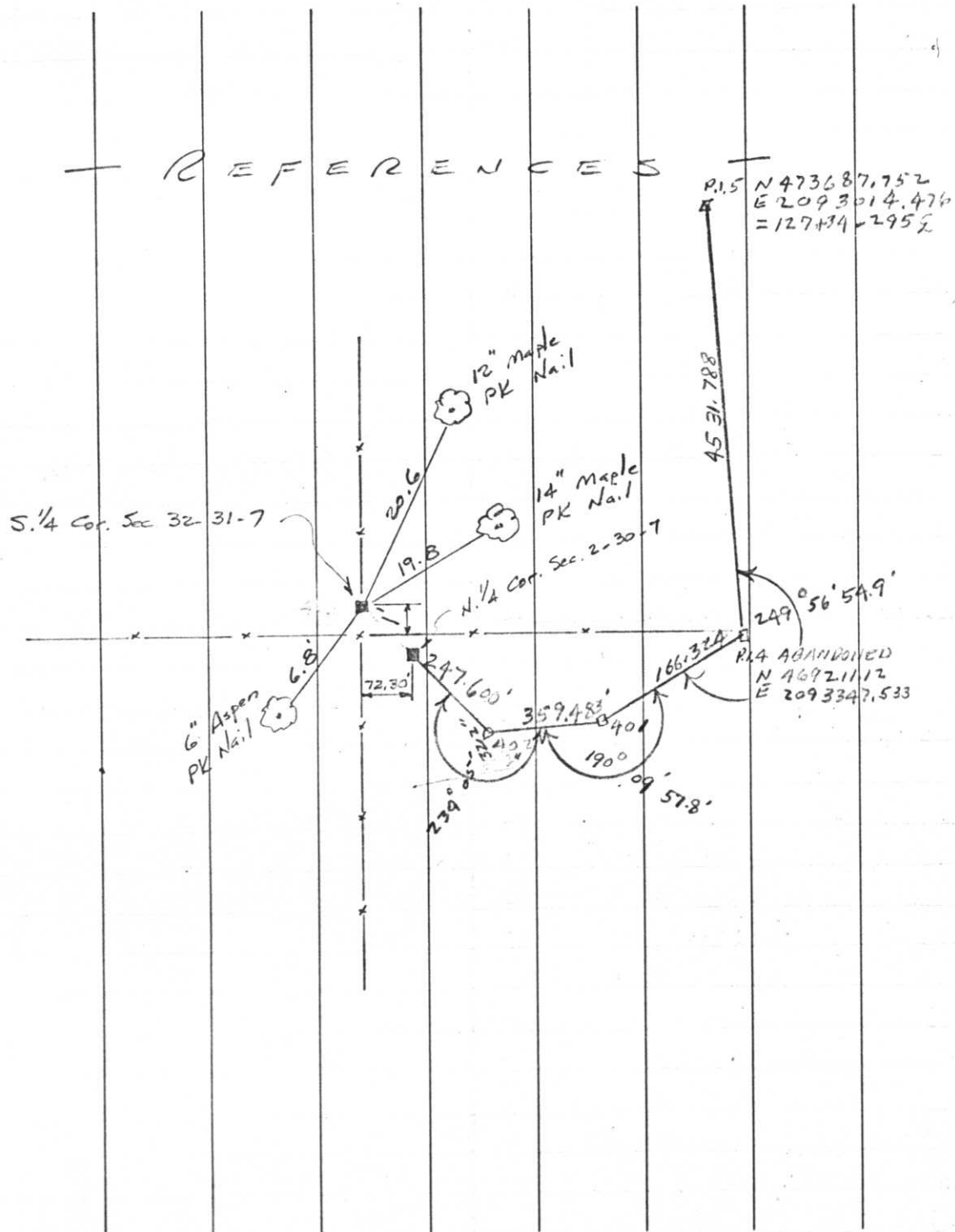
ALL WITNESS CORNERS ARE
 3/4" x 30" IRON BARS WITH
 LINCOLN COUNTY OR
 MARATHON COUNTY CAPS.
 (UNLESS NOTED)

RECEIVED BY LINCOLN COUNTY
 SURVEYOR THIS 21ST DAY
 OF April 20 05
Tony Dahl
 COUNTY SURVEYOR

U.S.H. 51 FENCE

132.

REFERENCES



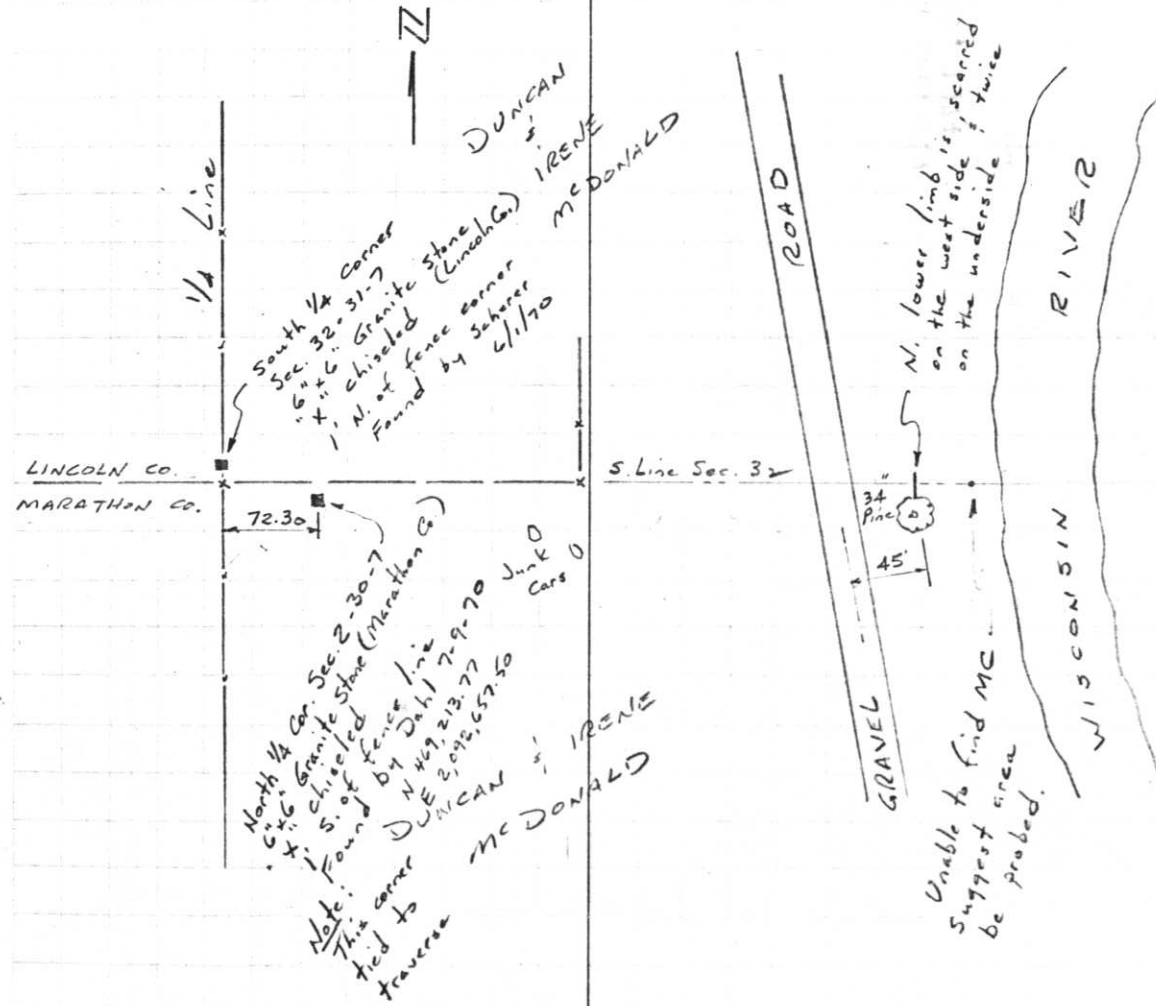
R1.5
 N 473687.752
 E 2093014.476
 = 1274342952

R14 ABANDONED
 N 469211.12
 E 2093347.533

Y-7

T31N, RTE

June 1, 1970



South 1/4 Corner
 Sec. 32-31-7
 6"x6" Granite Stone
 (Lincoln Co.)
 chiseled
 N. of fence corner
 Found by Scherer
 6/1/70
 DUNCAN + IRENE
 MCDONALD

North 1/4 Cor. Sec. 2-30-7
 6"x6" Granite Stone (Marathon Co.)
 chiseled
 S. of fence line
 Found by Dahl 7-9-70
 N 469213.77
 E 2093347.533
 Junk Cars 0
 DUNCAN + IRENE
 MCDONALD

Unable to find MC.
 Suggest area
 be probed.

Project I.D. 1173-2-00 So. Co. Line
 -1.4Mi. N. Merrill U.S.H. 51
 Freeway Lincoln County Wm. Scherer
 Surveyor Received from Division of
 Hwy's Jan. 11. 1973