

CERTIFIED LAND CORNER RESTORATION

Index No. 4-3

State of Wisconsin }
 County of Lincoln } ss.

I, Sheridan D. Schwark, do hereby certify that on the 2nd day of August, 1979, I found evidence of the South one-quarter corner of Section 31 Township 31, North, Range 7 East, Fourth, Principal Meridian, as described hereon; and that from this evidence I established a new monument and accessories as described hereon to perpetuate the original location of this corner.

Resident witnesses:

.....

.....

.....

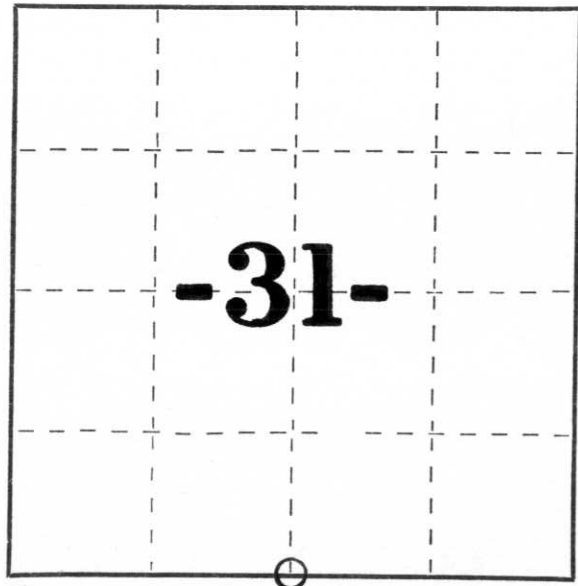
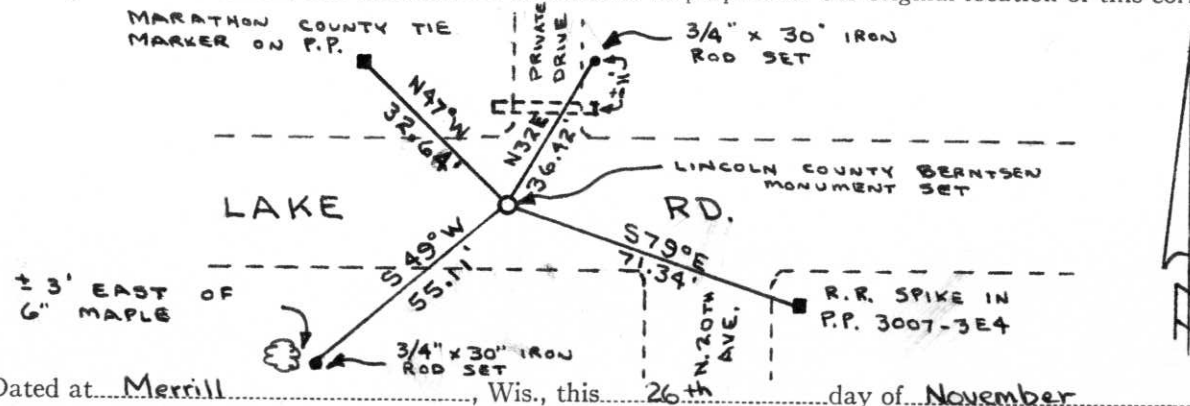
History of original corner establishment:

Date: June & July 1851
 Surveyor: James M. Marsh
 Monument: Wood Post
 Witnesses: 10" Sugar, N64°E, 16 links
8" Sugar, N43°E, 68 links
12" Hemlock, N9°W, 57 links
22" Hemlock, N38°W, 26 links

Description of corner evidence found:

We excavated the road with a backhoe and found a 6" x 6" x 22" top portion of a red granite monument just below the granite road surface. This portion was tipped and appeared to be broken off. We continued digging and found a 6" x 6" x 11" base portion of the stone. The granite monument was set in 1903 by Louis Kleinschmidt. We removed the broken granite monument and set a Lincoln County Berntsen Monument in the position that we found the base of the granite monument.

Description of monument and accessories I established to perpetuate the original location of this corner.



○ = Corner monument restored.

Dated at Merrill, Wis., this 26th day of November, 1979.

Signature Sheridan D. Schwark Title Registered Land Surveyor Registration No. S-1205
 (County Surveyor, Registered Land Surveyor, or other duly authorized official)

Office of Register of Deeds, County of _____, I hereby certify that the within instrument was filed in this office for record on the _____ day of _____, 19____ at _____ o'clock _____ M.

(Register of Deeds)

By _____ Deputy